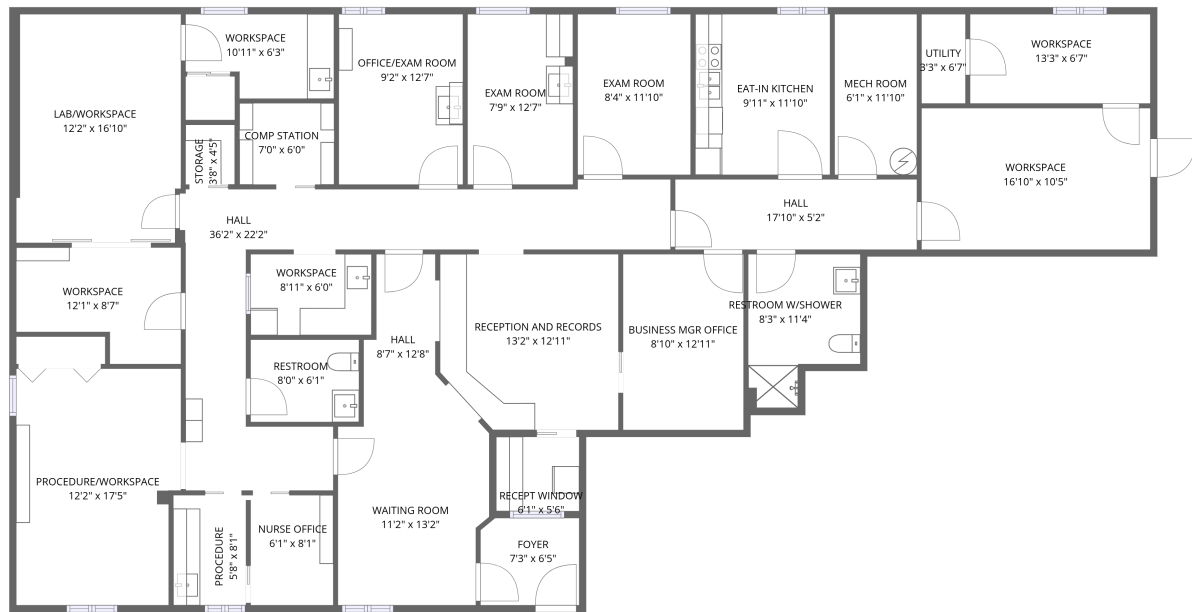


Home data report

1258 Mann Drive, 100, Matthews, North Carolina, United States, 100



1st floor

Total Area: 2781 sq. ft

1st Floor: 2781 sq. ft

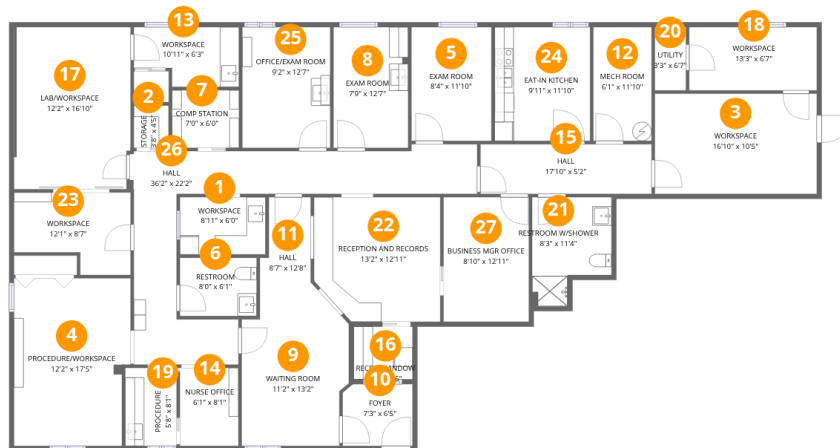
Excluded:

Property summary



Home data report

1258 Mann Drive, 100, Matthews, North Carolina, United States, 100



Room dimensions

Floor 1

Total: 2781 sqft Excluded: 0 sqft

#		Dimensions	sqft	Counted as living area
1	Workspace	8'11" x 6'0"	53 sq. ft	Yes
2	Storage	3'8" x 4'5"	16 sq. ft	Yes
3	Workspace	16'10" x 10'5"	176 sq. ft	Yes
4	Procedure/Workspace	12'2" x 17'5"	204 sq. ft	Yes
5	Exam Room	8'4" x 11'10"	99 sq. ft	Yes
6	Restroom	8'0" x 6'1"	48 sq. ft	Yes
7	Comp Station	7'0" x 6'0"	42 sq. ft	Yes
8	Exam Room	7'9" x 12'7"	98 sq. ft	Yes
9	Waiting Room	11'2" x 13'2"	141 sq. ft	Yes
10	Foyer	7'3" x 6'5"	46 sq. ft	Yes

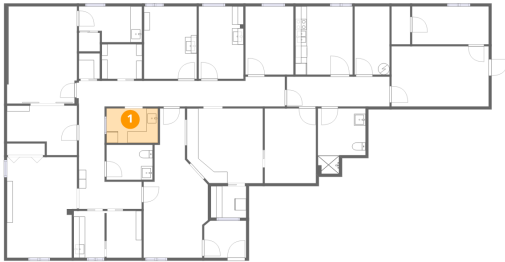
Home data report

**1258 Mann Drive,100,Matthews,North Carolina,United States,
100**

#		Dimensions	sqft	Counted as living area
11	Hall	8'7" x 12'8"	70 sq. ft	Yes
12	Mech Room	6'1" x 11'10"	72 sq. ft	Yes
13	Workspace	10'11" x 6'3"	62 sq. ft	Yes
14	Nurse Office	6'1" x 8'1"	49 sq. ft	Yes
15	Hall	17'10" x 5'2"	92 sq. ft	Yes
16	Recept Window	6'1" x 5'6"	34 sq. ft	Yes
17	Lab/Workspace	12'2" x 16'10"	203 sq. ft	Yes
18	Workspace	13'3" x 6'7"	87 sq. ft	Yes
19	Procedure	5'8" x 8'1"	44 sq. ft	Yes
20	Utility	3'3" x 6'7"	21 sq. ft	Yes
21	Restroom W/SHOWER	8'3" x 11'4"	79 sq. ft	Yes
22	Reception And Records	13'2" x 12'11"	163 sq. ft	Yes
23	Workspace	12'1" x 8'7"	88 sq. ft	Yes
24	Eat-in Kitchen	9'11" x 11'10"	118 sq. ft	Yes
25	OFFICE/EXAM Room	9'2" x 12'7"	115 sq. ft	Yes
26	Hall	36'2" x 22'2"	275 sq. ft	Yes
27	Business Mgr Office	8'10" x 12'11"	115 sq. ft	Yes

1258 Mann Drive,100,Matthews,North Carolina,United States,
100

1 Floor 1 - Workspace



Dimensions: 8'11" x 6'0"
Area: 53 sq. ft
Counted as living area: Yes

Heated: Yes
Finished: Yes
Enclosed: Yes
Contiguous: Yes
Permitted: Yes
Wet space: No
Addition: No
Conversion: No

2 Floor 1 - Storage



Dimensions: 3'8" x 4'5"
Area: 16 sq. ft
Counted as living area: Yes

Heated: Yes
Finished: Yes
Enclosed: Yes
Contiguous: Yes
Permitted: Yes
Wet space: No
Addition: No
Conversion: No

3 Floor 1 - Workspace



Dimensions: 16'10" x 10'5"
Area: 176 sq. ft
Counted as living area: Yes

Heated: Yes
Finished: Yes
Enclosed: Yes
Contiguous: Yes
Permitted: Yes
Wet space: No
Addition: No
Conversion: No

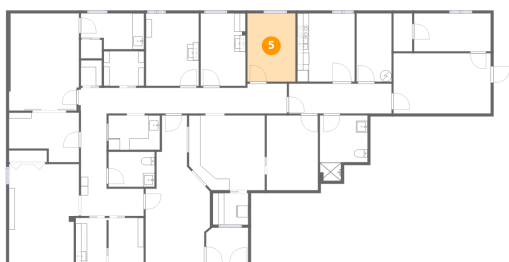
4 Floor 1 - Procedure/Workspace



Dimensions: 12'2" x 17'5"
Area: 204 sq. ft
Counted as living area: Yes

Heated: Yes
Finished: Yes
Enclosed: Yes
Contiguous: Yes
Permitted: Yes
Wet space: No
Addition: No
Conversion: No

5 Floor 1 - Exam Room



Dimensions: 8'4" x 11'10"
Area: 99 sq. ft
Counted as living area: Yes

Heated: Yes
Finished: Yes
Enclosed: Yes
Contiguous: Yes
Permitted: Yes
Wet space: No
Addition: No
Conversion: No

6 Floor 1 - Restroom



Dimensions: 8'0" x 6'1"
Area: 48 sq. ft
Counted as living area: Yes

Heated: Yes
Finished: Yes
Enclosed: Yes
Contiguous: Yes
Permitted: Yes
Wet space: No
Addition: No
Conversion: No

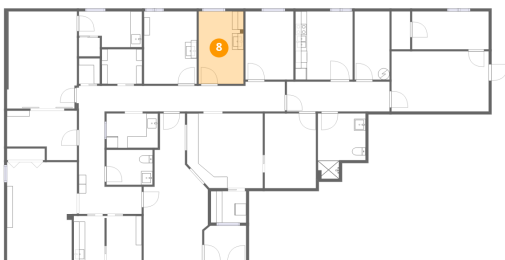
7 Floor 1 - Comp Station



Dimensions: 7'0" x 6'0"
Area: 42 sq. ft
Counted as living area: Yes

Heated: Yes
Finished: Yes
Enclosed: Yes
Contiguous: Yes
Permitted: Yes
Wet space: No
Addition: No
Conversion: No

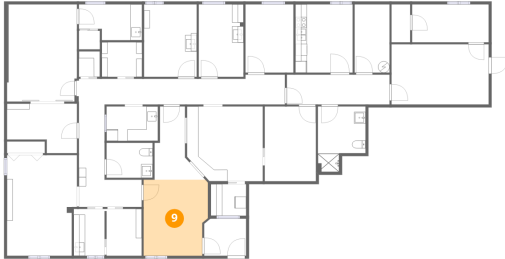
8 Floor 1 - Exam Room



Dimensions: 7'9" x 12'7"
Area: 98 sq. ft
Counted as living area: Yes

Heated: Yes
Finished: Yes
Enclosed: Yes
Contiguous: Yes
Permitted: Yes
Wet space: No
Addition: No
Conversion: No

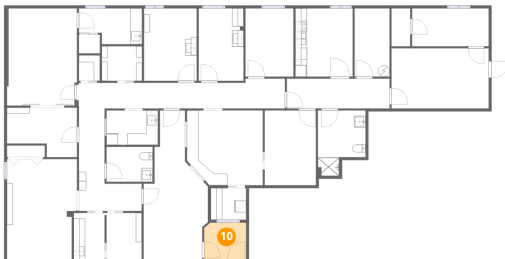
9 Floor 1 - Waiting Room



Dimensions: 11'2" x 13'2"
Area: 141 sq. ft
Counted as living area: Yes

Heated: Yes
Finished: Yes
Enclosed: Yes
Contiguous: Yes
Permitted: Yes
Wet space: No
Addition: No
Conversion: No

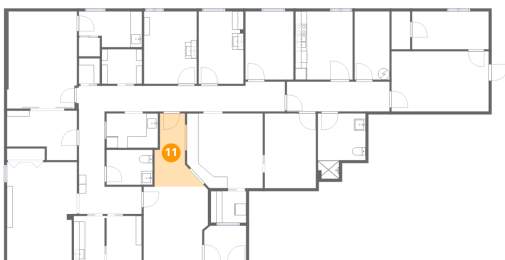
10 Floor 1 - Foyer



Dimensions: 7'3" x 6'5"
Area: 46 sq. ft
Counted as living area: Yes

Heated: Yes
Finished: Yes
Enclosed: Yes
Contiguous: Yes
Permitted: Yes
Wet space: No
Addition: No
Conversion: No

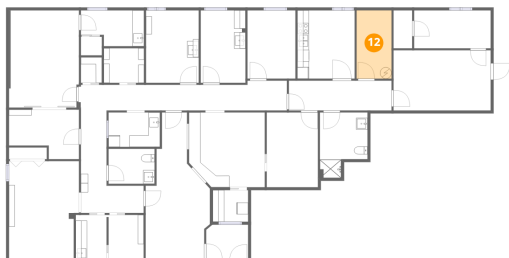
11 Floor 1 - Hall



Dimensions: 8'7" x 12'8"
Area: 70 sq. ft
Counted as living area: Yes

Heated: Yes
Finished: Yes
Enclosed: Yes
Contiguous: Yes
Permitted: Yes
Wet space: No
Addition: No
Conversion: No

12 Floor 1 - Mech Room



Dimensions: 6'1" x 11'10"
Area: 72 sq. ft
Counted as living area: Yes

Heated: Yes
Finished: Yes
Enclosed: Yes
Contiguous: Yes
Permitted: Yes
Wet space: No
Addition: No
Conversion: No

13 Floor 1 - Workspace



Dimensions: 10'11" x 6'3"
Area: 62 sq. ft
Counted as living area: Yes

Heated: Yes
Finished: Yes
Enclosed: Yes
Contiguous: Yes
Permitted: Yes
Wet space: No
Addition: No
Conversion: No

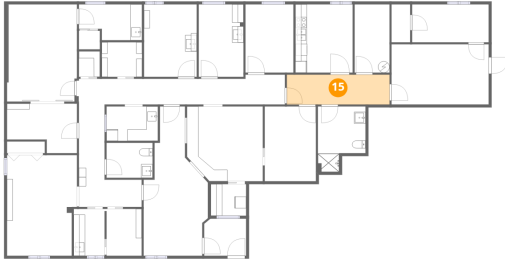
14 Floor 1 - Nurse Office



Dimensions: 6'1" x 8'1"
Area: 49 sq. ft
Counted as living area: Yes

Heated: Yes
Finished: Yes
Enclosed: Yes
Contiguous: Yes
Permitted: Yes
Wet space: No
Addition: No
Conversion: No

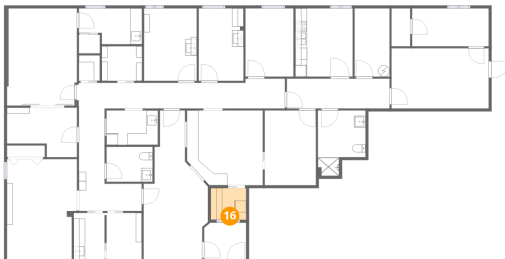
15 Floor 1 - Hall



Dimensions: 17'10" x 5'2"
Area: 92 sq. ft
Counted as living area: Yes

Heated: Yes
Finished: Yes
Enclosed: Yes
Contiguous: Yes
Permitted: Yes
Wet space: No
Addition: No
Conversion: No

16 Floor 1 - Recept Window



Dimensions: 6'1" x 5'6"
Area: 34 sq. ft
Counted as living area: Yes

Heated: Yes
Finished: Yes
Enclosed: Yes
Contiguous: Yes
Permitted: Yes
Wet space: No
Addition: No
Conversion: No

17 Floor 1 - Lab/Workspace



Dimensions: 12'2" x 16'10"
Area: 203 sq. ft
Counted as living area: Yes

Heated: Yes
Finished: Yes
Enclosed: Yes
Contiguous: Yes
Permitted: Yes
Wet space: No
Addition: No
Conversion: No

18 Floor 1 - Workspace



Dimensions: 13'3" x 6'7"
Area: 87 sq. ft
Counted as living area: Yes

Heated: Yes
Finished: Yes
Enclosed: Yes
Contiguous: Yes
Permitted: Yes
Wet space: No
Addition: No
Conversion: No

19 Floor 1 - Procedure



Dimensions: 5'8" x 8'1"
Area: 44 sq. ft
Counted as living area: Yes

Heated: Yes
Finished: Yes
Enclosed: Yes
Contiguous: Yes
Permitted: Yes
Wet space: No
Addition: No
Conversion: No

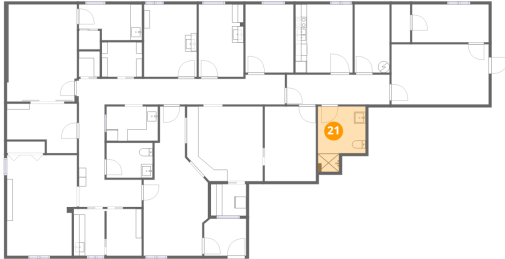
20 Floor 1 - Utility



Dimensions: 3'3" x 6'7"
Area: 21 sq. ft
Counted as living area: Yes

Heated: Yes
Finished: Yes
Enclosed: Yes
Contiguous: Yes
Permitted: Yes
Wet space: No
Addition: No
Conversion: No

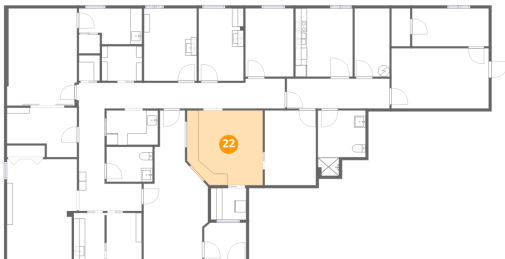
21 Floor 1 - Restroom W/SHOWER



Dimensions: 8'3" x 11'4"
Area: 79 sq. ft
Counted as living area: Yes

Heated: Yes
Finished: Yes
Enclosed: Yes
Contiguous: Yes
Permitted: Yes
Wet space: Yes
Addition: No
Conversion: No

22 Floor 1 - Reception And Records



Dimensions: 13'2" x 12'11"
Area: 163 sq. ft
Counted as living area: Yes

Heated: Yes
Finished: Yes
Enclosed: Yes
Contiguous: Yes
Permitted: Yes
Wet space: No
Addition: No
Conversion: No

23 Floor 1 - Workspace



Dimensions: 12'1" x 8'7"
Area: 88 sq. ft
Counted as living area: Yes

Heated: Yes
Finished: Yes
Enclosed: Yes
Contiguous: Yes
Permitted: Yes
Wet space: No
Addition: No
Conversion: No

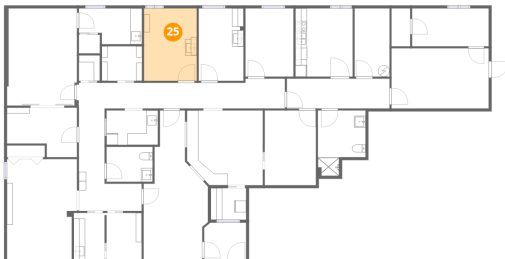
24 Floor 1 - Eat-in Kitchen



Dimensions: 9'11" x 11'10"
Area: 118 sq. ft
Counted as living area: Yes

Heated: Yes
Finished: Yes
Enclosed: Yes
Contiguous: Yes
Permitted: Yes
Wet space: No
Addition: No
Conversion: No

25 Floor 1 - OFFICE/EXAM Room



Dimensions: 9'2" x 12'7"
Area: 115 sq. ft
Counted as living area: Yes

Heated: Yes
Finished: Yes
Enclosed: Yes
Contiguous: Yes
Permitted: Yes
Wet space: No
Addition: No
Conversion: No

26 Floor 1 - Hall



Dimensions: 36'2" x 22'2"
Area: 275 sq. ft
Counted as living area: Yes

Heated: Yes
Finished: Yes
Enclosed: Yes
Contiguous: Yes
Permitted: Yes
Wet space: No
Addition: No
Conversion: No

Home data report

1258 Mann Drive,100,Matthews,North Carolina,United States,
100

27 Floor 1 - Business Mgr Office



Dimensions: 8'10" x 12'11"
Area: 115 sq. ft
Counted as living area: Yes

Heated: Yes
Finished: Yes
Enclosed: Yes
Contiguous: Yes
Permitted: Yes
Wet space: No
Addition: No
Conversion: No