



# OFFICE SPACE FOR LEASE 110 S HAGER AVE, BARRINGTON, IL



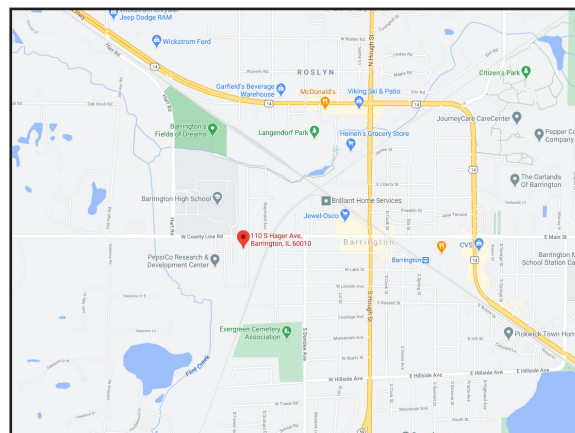
## BUILDING FEATURES:

- Building Renovations Including common areas, New LED lighting, flooring, signage & parking lot upgrades in 2021
- 225 SF (1st Floor space) Available
- Building renovations in 2021
- Operable Windows and Efficient Layouts
- Located Across from Barrington High School
- All Inclusive Executive Suites available 180- 400 SF
- High End Finishes & ADA Restrooms
- Ample Parking on site
- Near Restaurants, Shopping and Metra
- Exterior Signage Available
- RENTAL RATE: SEE BELOW  
\* Rate Includes HVAC, Janitorial & Electricity  
WI-FI & Common Area Kitchen Access
- Visit [www.chicagolandcommercial.com](http://www.chicagolandcommercial.com) for links to 3-D Virtual Tours!!

## AVAILABLE SPACE:

SUITE	SIZE (SF)	PRICING	AVAILABLE
101-C	225 RSF	\$495 Per Month *	12/1/25

Secure Private Office w/ exterior window



\*\*EXECUTIVE OFFICE SUITES HAVE OPERABLE WINDOWS & INCLUDES UTILITIES & WI-FI\*\*

## FOR MORE INFORMATION:

RANDY OLCZYK  
Direct: 847.246.9611  
randy@chicagolandcommercial.com

TOM CALLAHAN  
Direct: 847.246.9636  
Tom@chicagolandcommercial.com



4811 Emerson Ave Suite 112, Palatine, IL 60067



# OFFICE SPACE FOR LEASE

110 S HAGER AVE, BARRINGTON, IL

## INTERIOR BUILDING PHOTOS





# OFFICE SPACE FOR LEASE

## 110 S HAGER AVE, BARRINGTON, IL

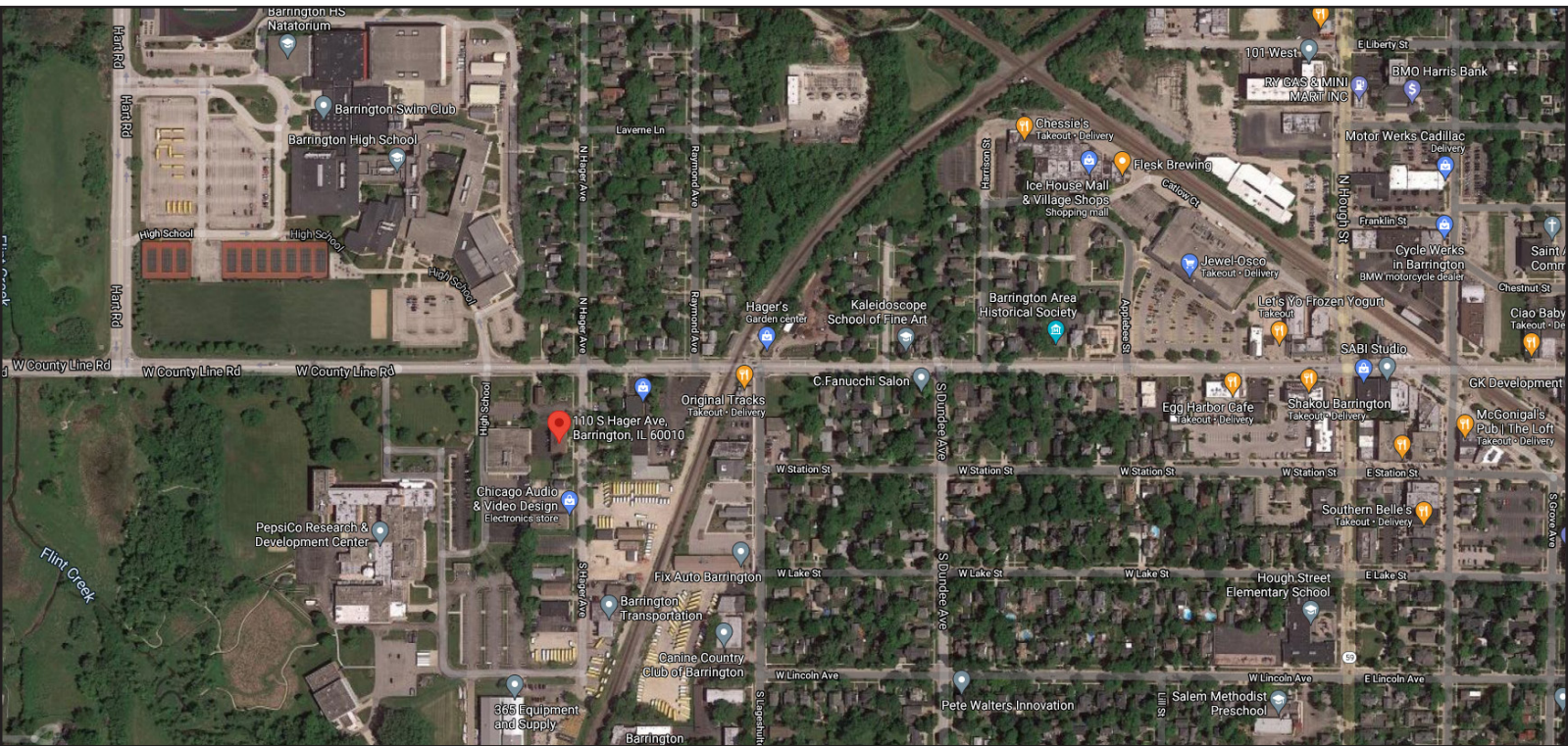
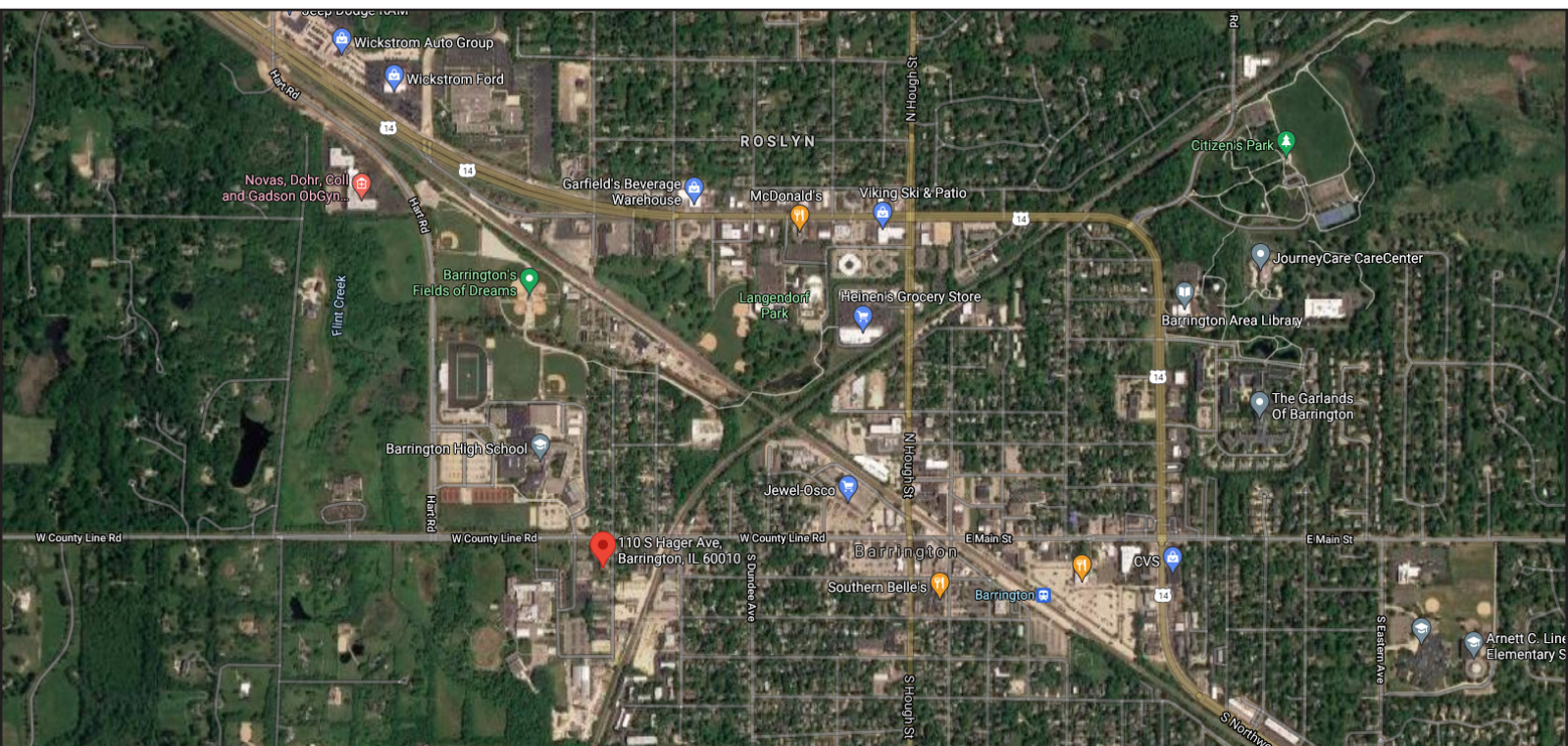
### INTERIOR BUILDING PHOTOS





# OFFICE SPACE FOR LEASE 110 S HAGER AVE, BARRINGTON, IL

## AERIAL MAP



### FOR MORE INFORMATION:

**RANDY OLCZYK**  
Direct: 847.246.9611  
randy@chicagolandcommercial.com

**TOM CALLAHAN**  
Direct: 847.246.9636  
@chicagolandcommercial.com



4811 Emerson Ave Suite 112, Palatine, IL 60067

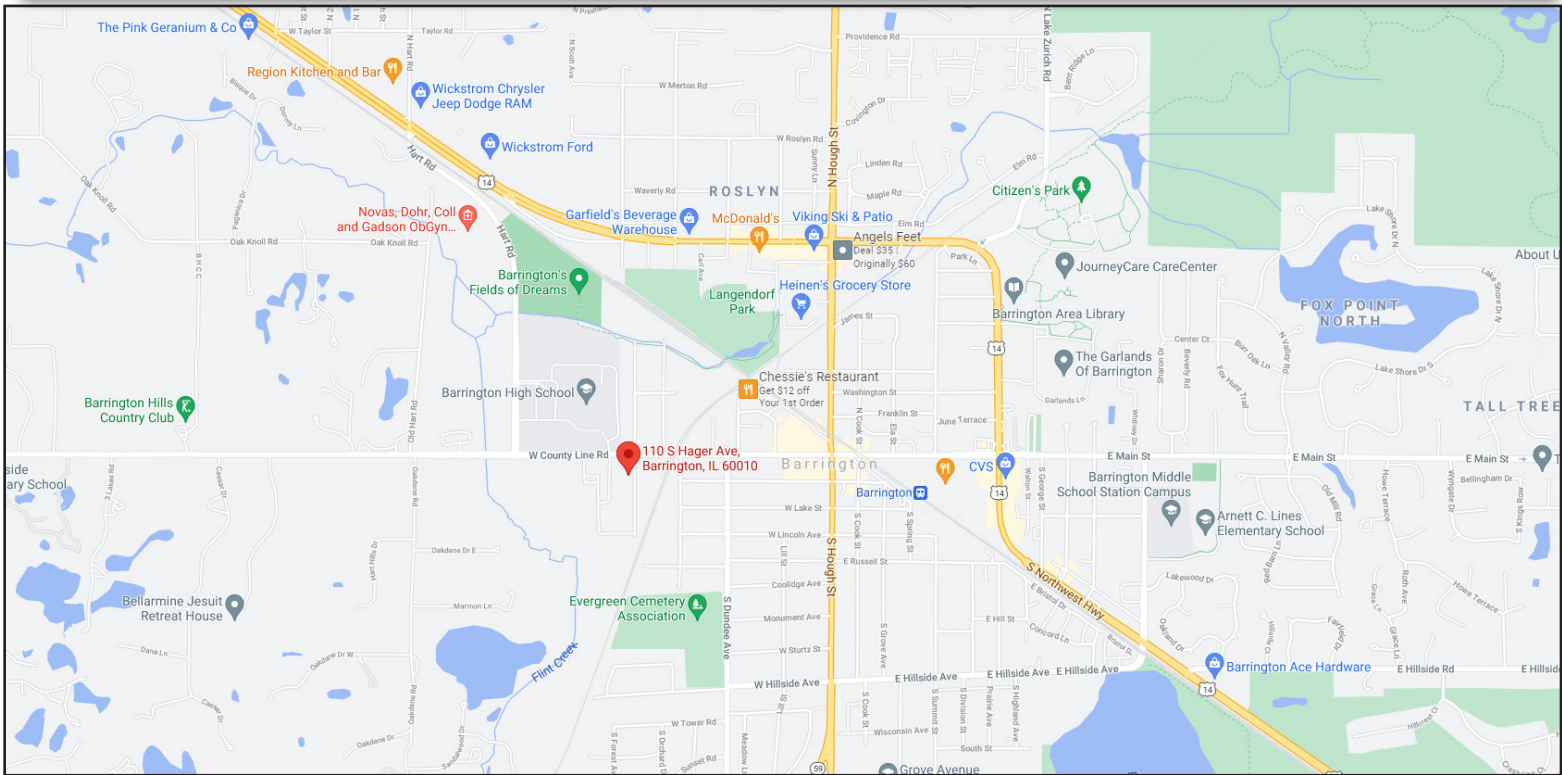
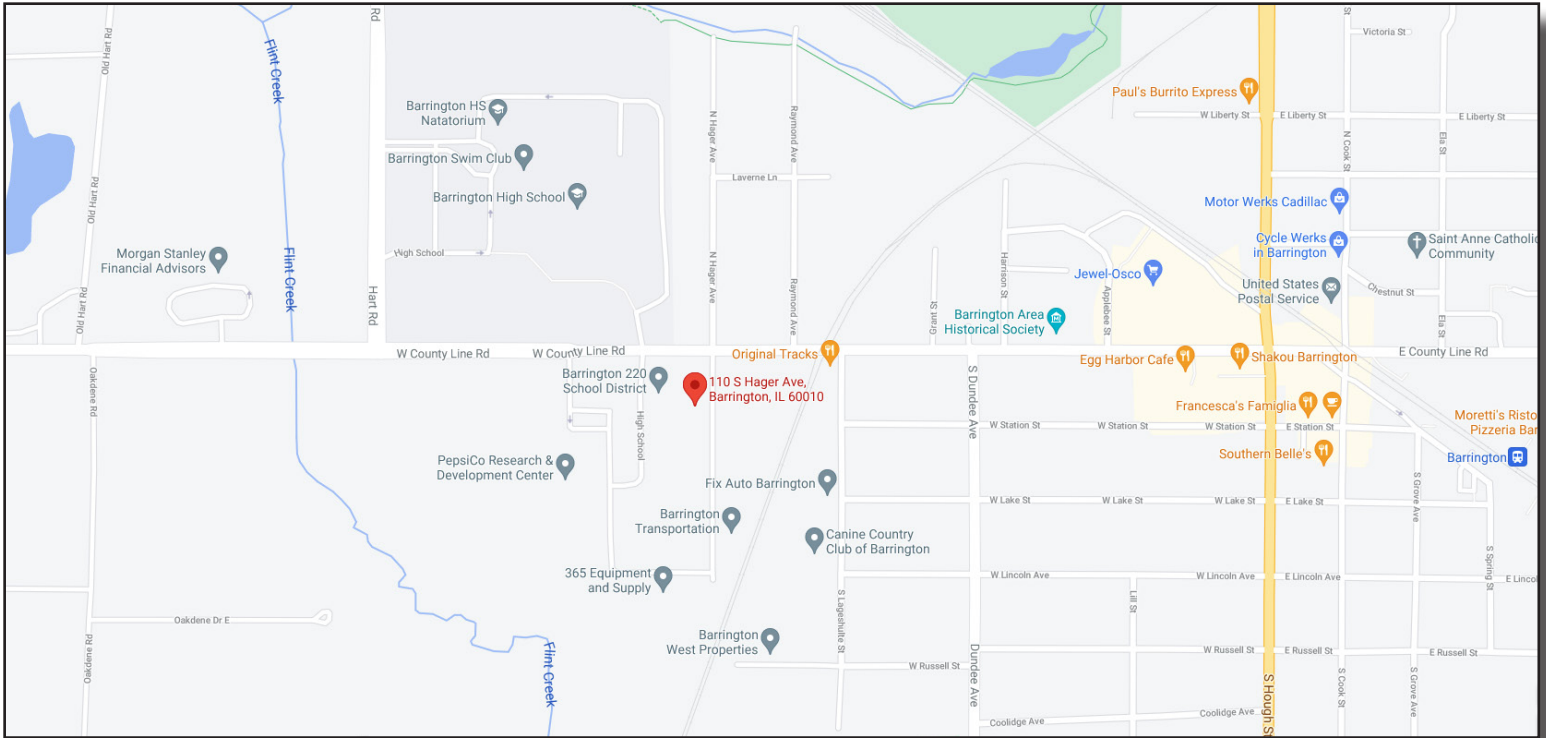
LEASING | SALES | TENANT ADVISORY | MANAGEMENT

www.chicagolandcommercial.com



# OFFICE SPACE FOR LEASE 110 S HAGER AVE, BARRINGTON, IL

## LOCATION MAP



### FOR MORE INFORMATION:

**RANDY OLCZYK**  
Direct: 847.246.9611  
randy@chicagolandcommercial.com

**TOM CALLAHAN**  
Direct: 847.246.9636  
@chicagolandcommercial.com

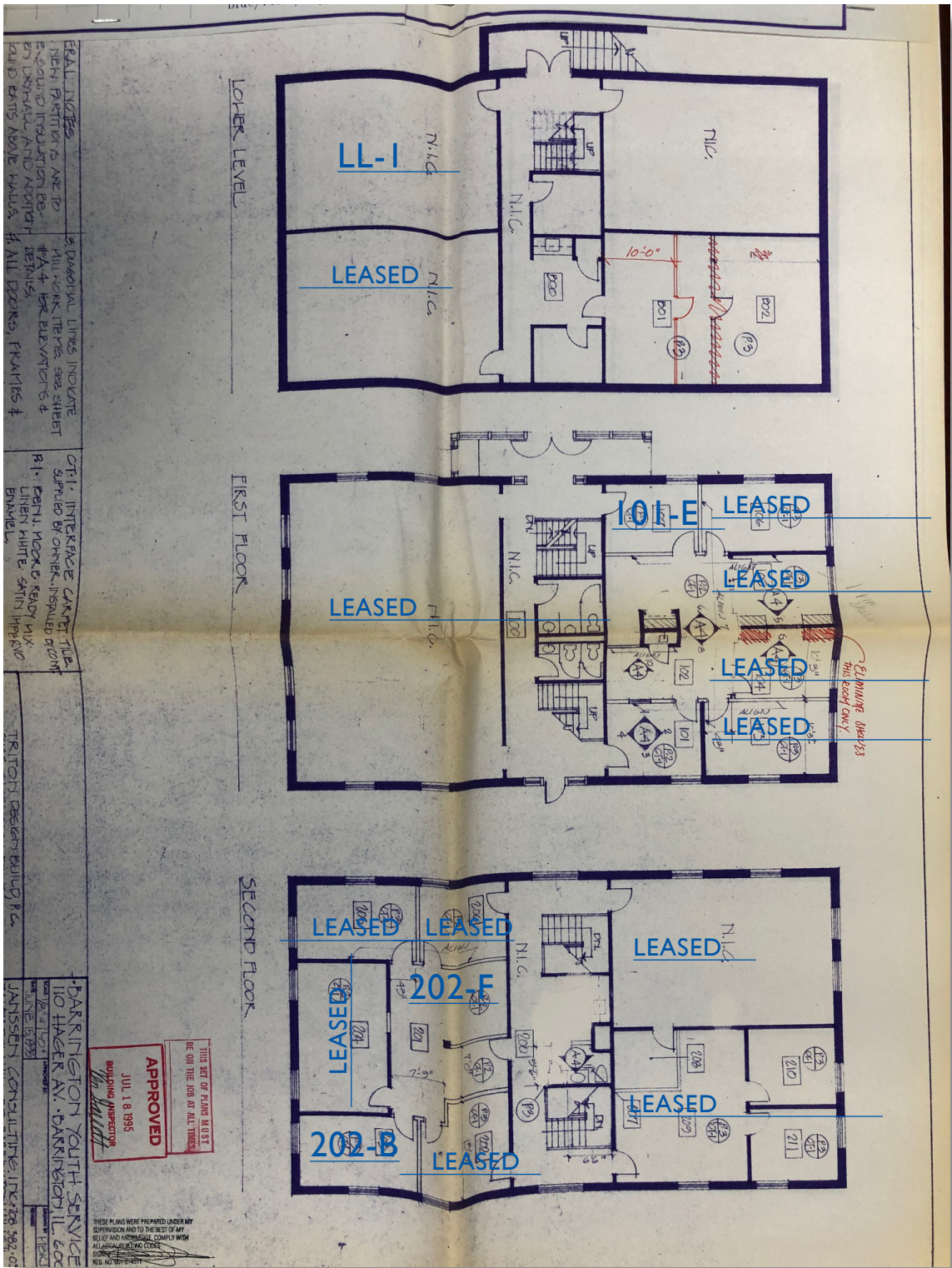


4811 Emerson Ave Suite 112, Palatine, IL 60067



# OFFICE SPACE FOR LEASE 110 S HAGER AVE, BARRINGTON, IL

## FLOOR PLATES



### FOR MORE INFORMATION:

RANDY OLCZYK  
Direct: 847.246.9611  
randy@chicagolandcommercial.com

TOM CALLAHAN  
Direct: 847.246.9636  
@chicagolandcommercial.com

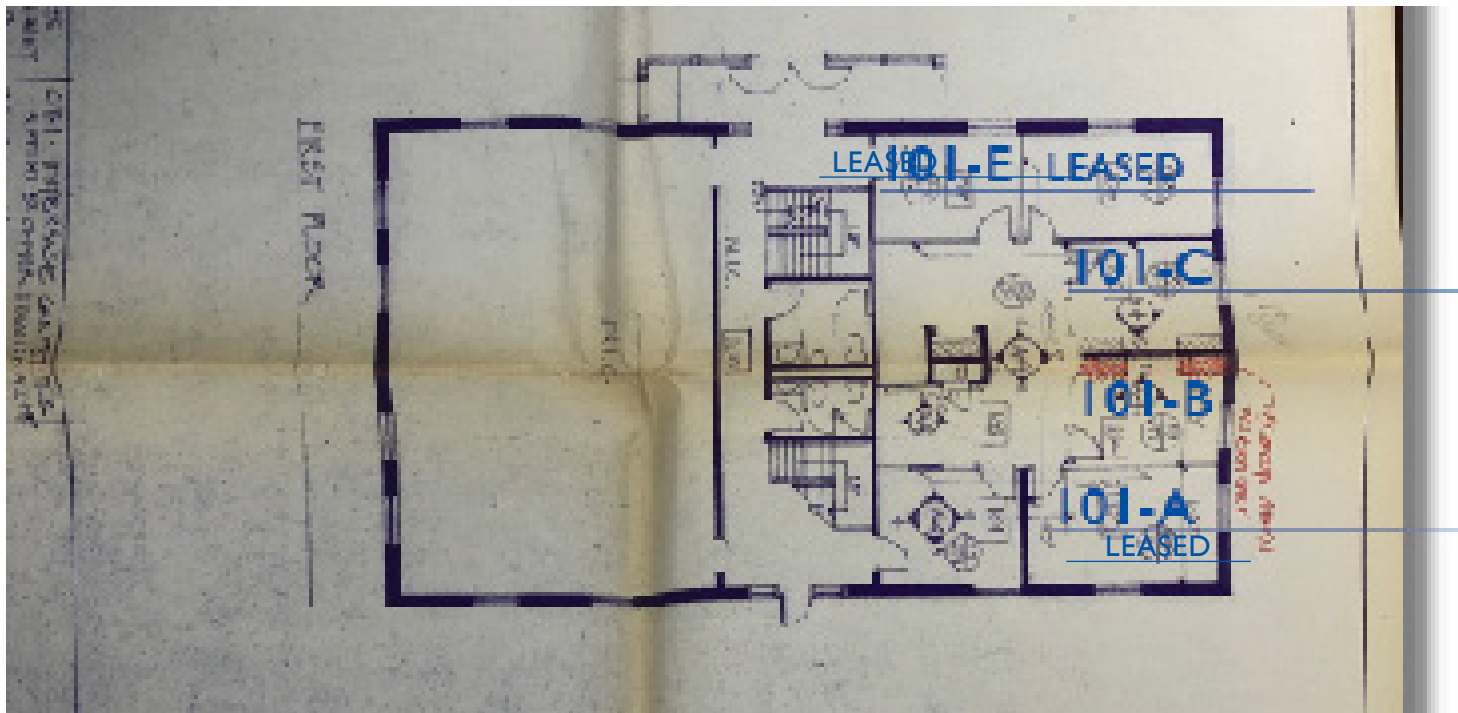


4811 Emerson Ave Suite 112, Palatine, IL 60067



# OFFICE SPACE FOR LEASE 110 S HAGER AVE, BARRINGTON, IL

SUITE 101 EXECUTIVE SUITES (101-C)



EXECUTIVE SUITES SUITE: (101-C) \$495 PER MONTH INCLUDES WI-FI & UTILITIES!



Scan the QR Code or click [here](#) for a 3-D Virtual Tour of the space!

## FOR MORE INFORMATION:

RANDY OLCZYK  
Direct: 847.246.9611  
randy@chicagolandcommercial.com

TOM CALLAHAN  
Direct: 847.246.9636  
@chicagolandcommercial.com



4811 Emerson Ave Suite 112, Palatine, IL 60067