

# LATTA PARK

GUESS ROAD AND LATTA ROAD  
DURHAM, NC 27712



Chip Lanier, MBA  
Vice President  
clanier@lee-associates.com  
D 919.576.2516  
C 919.291.6282

Jenn Olevitch-Roberson  
Vice President  
jolevitch-roberson@lee-associates.com  
D 919.576.2517  
C 919.345.1752

Loup Gajigianis  
Associate Broker  
lgajigianis@lee-associates.com  
D 984.684.5008  
C 919.338.4018

 **LEE &  
ASSOCIATES**  
COMMERCIAL REAL ESTATE SERVICES  
RALEIGH • DURHAM • WILMINGTON

# SITE PLAN



LATTA PARK • GUESS RD & LATTA RD, DURHAM, NC 27712

# PROPERTY OVERVIEW

## AVAILABILITY

- Building 2: 1,700 SF
- Building 3: 1,100 SF

## PROPERTY HIGHLIGHTS

- 55,000 SF shopping center on 10.57 acres
- Located at the intersection of Guess Road and Latta Road in Northern Durham
- Anchored by Publix Super Market
- ±13,000 SF of small shop space available
- Outdoor patio seating
- Select retail tenants powered by solar panels
- Part of master planned community with 175 upscale town homes
- Designed for “Live, Work, Play”, Latta Park will have a pavilion with a stage, park, and walking trails
- Surrounded by growing and affluent residential developments

## DEMOGRAPHICS

	1 Mile	3 Miles	5 Miles
Population	4,449	38,703	90,756
Avg. HH Income	\$125,385	\$112,476	\$108,988
No. of Businesses	78	815	3,035
No. Employees	753	8,421	35,190
Total Daytime Population	3,121	29,388	88,969

Source: ESRI 2025

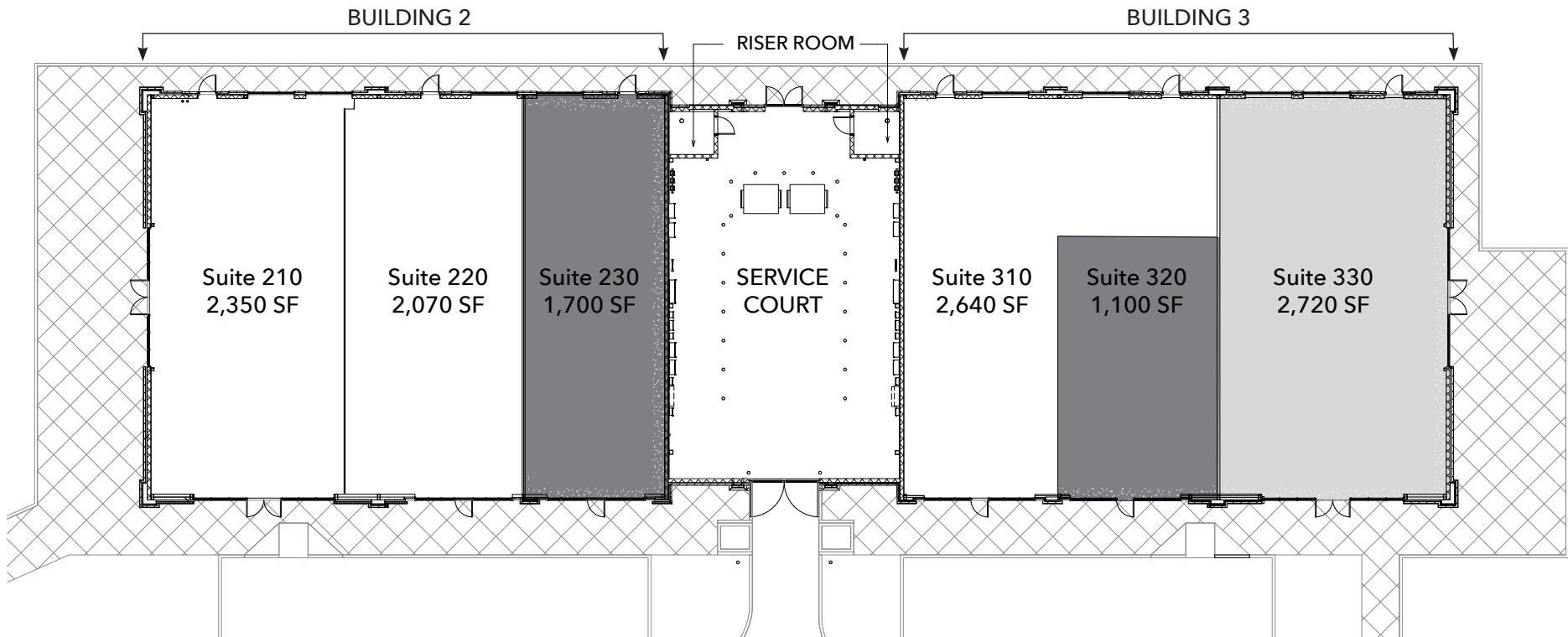


Traffic Counts Source NC DOT 2023

LATTA PARK • GUESS RD & LATTA RD, DURHAM, NC 27712

# FLOOR PLAN

GUESS ROAD



BUILDING 2

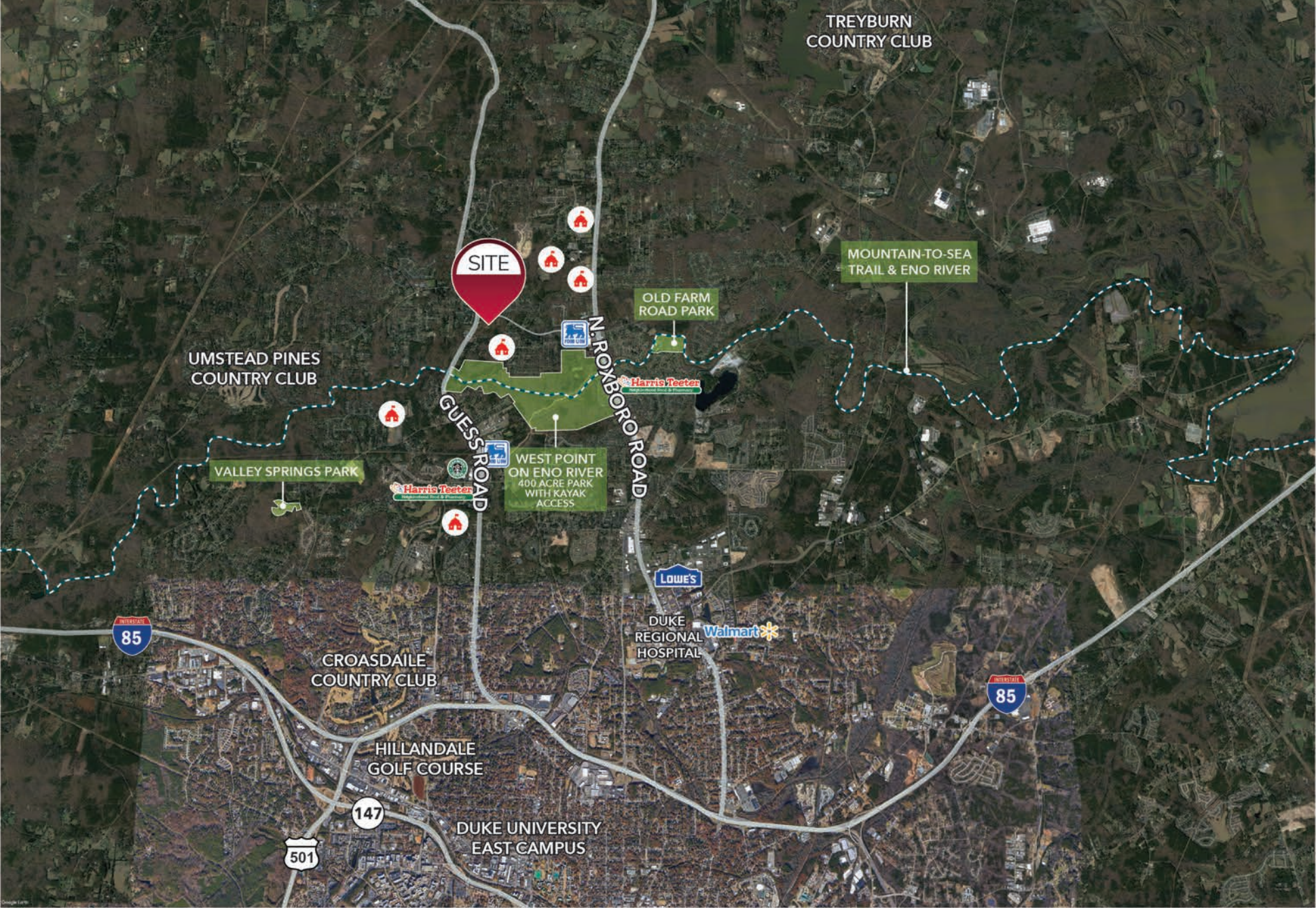
Suite 210	Chipotle	2,350 SF
Suite 220	Deca Dental	2,070 SF
Suite 230	AVAILABLE	1,700 SF

BUILDING 3

Suite 310	Compa Pizza & Pasta	2,640 SF
Suite 320	AVAILABLE	1,100 SF
Suite 330	LEASE PENDING	2,720 SF

LATTA PARK • GUESS RD & LATTA RD, DURHAM, NC 27712

# AREA OVERVIEW



LATTA PARK • GUESS RD & LATTA RD, DURHAM, NC 27712

## Presented by

Chip Lanier, MBA  
Vice President  
clanier@lee-associates.com  
D 919.576.2516  
C 919.291.6282

Jenn Olevitch-Roberson  
Vice President  
jolevitch-roberson@lee-associates.com  
D 919.576.2517  
C 919.291.6282

Loup Gajigianis  
Associate Broker  
lgajigianis@lee-associates.com  
D 919.576.2516  
C 919.291.6282



All information furnished regarding property for sale, rental or financing is from sources deemed reliable, but no warranty or representation is made to the accuracy thereof and same is submitted to errors, omissions, change of price, rental or other conditions prior to sale, lease or financing or withdrawal without notice. No liability of any kind is to be imposed on the broker herein.

100 Walnut Street | Cary, NC 27511 | 919-576-2500 | [lee-associates.com/raleigh](http://lee-associates.com/raleigh)

