

169 HUDSON

TRIBECA RETAIL FOR SALE

TRIBECA | MANHATTAN
BETWEEN VESTRY AND LAIGHT STREET


CURRENT

169 HUDSON

SIZE

Ground Floor: 4,000 SF

Lower Level: 2,500 SF

Total: 6,500 SF

ASKING PRICE

\$4,750,000

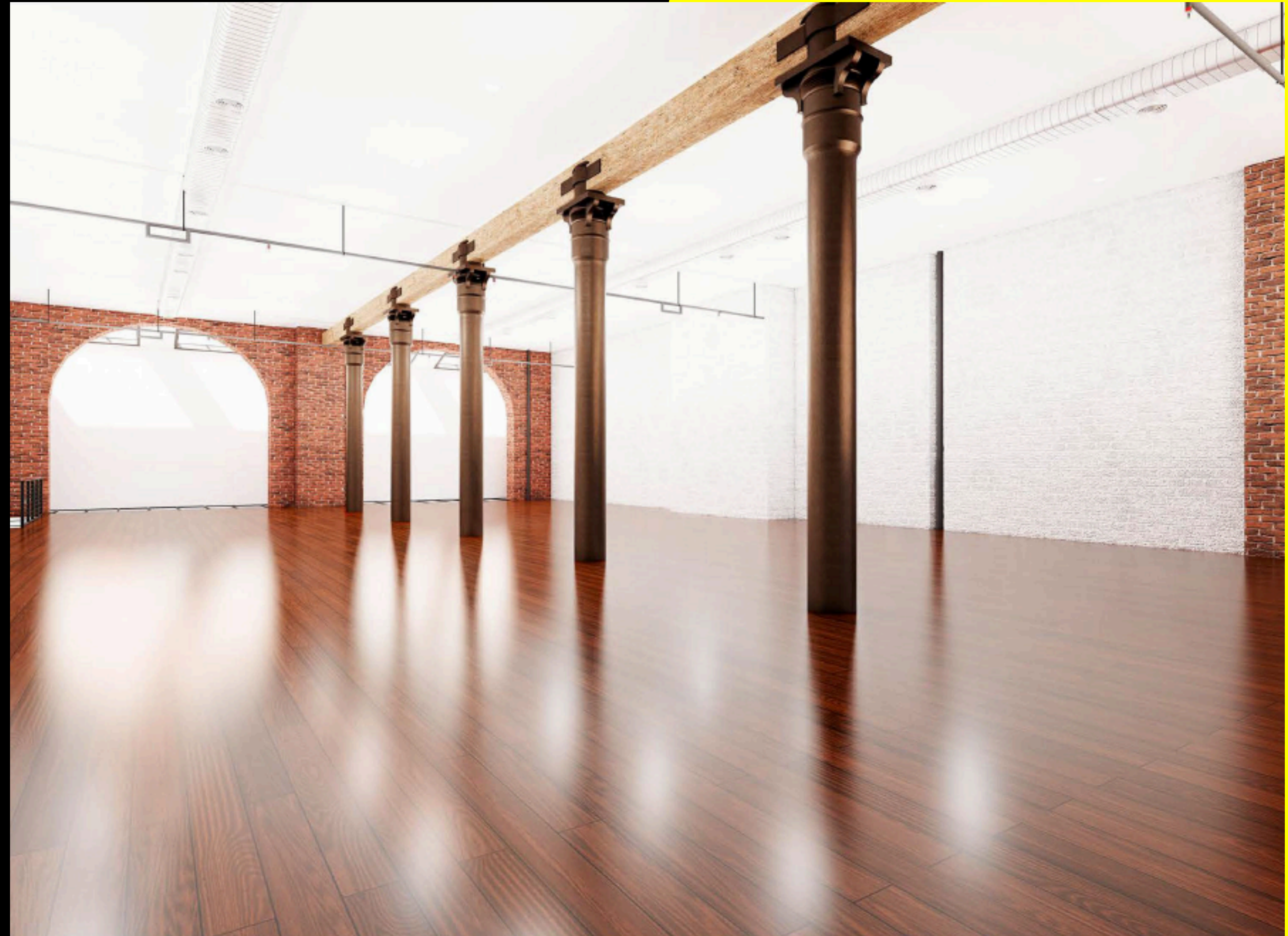
TAXES & COMMON CHARGES

\$9,004/month

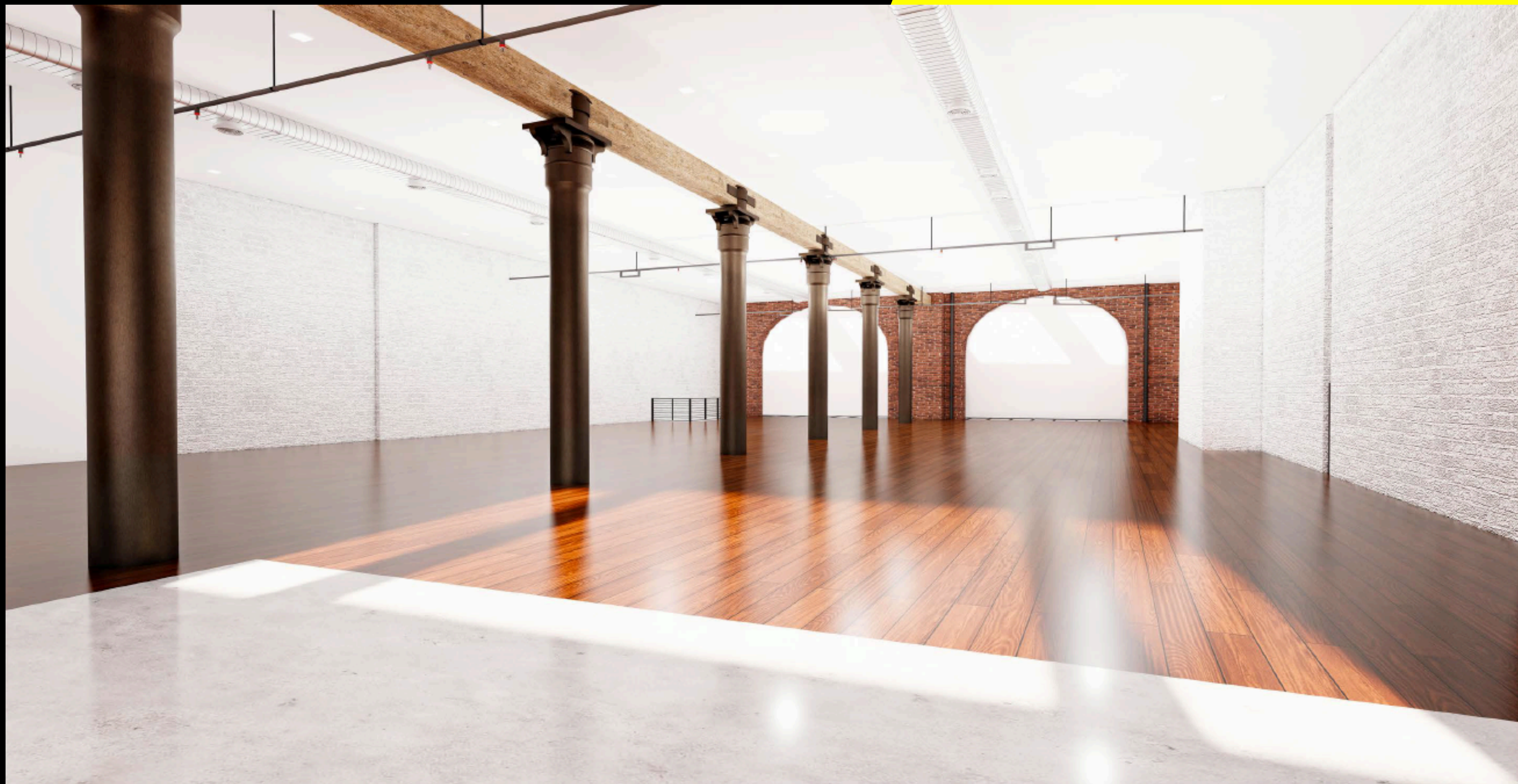
\$2,300/month

HIGHLIGHTS

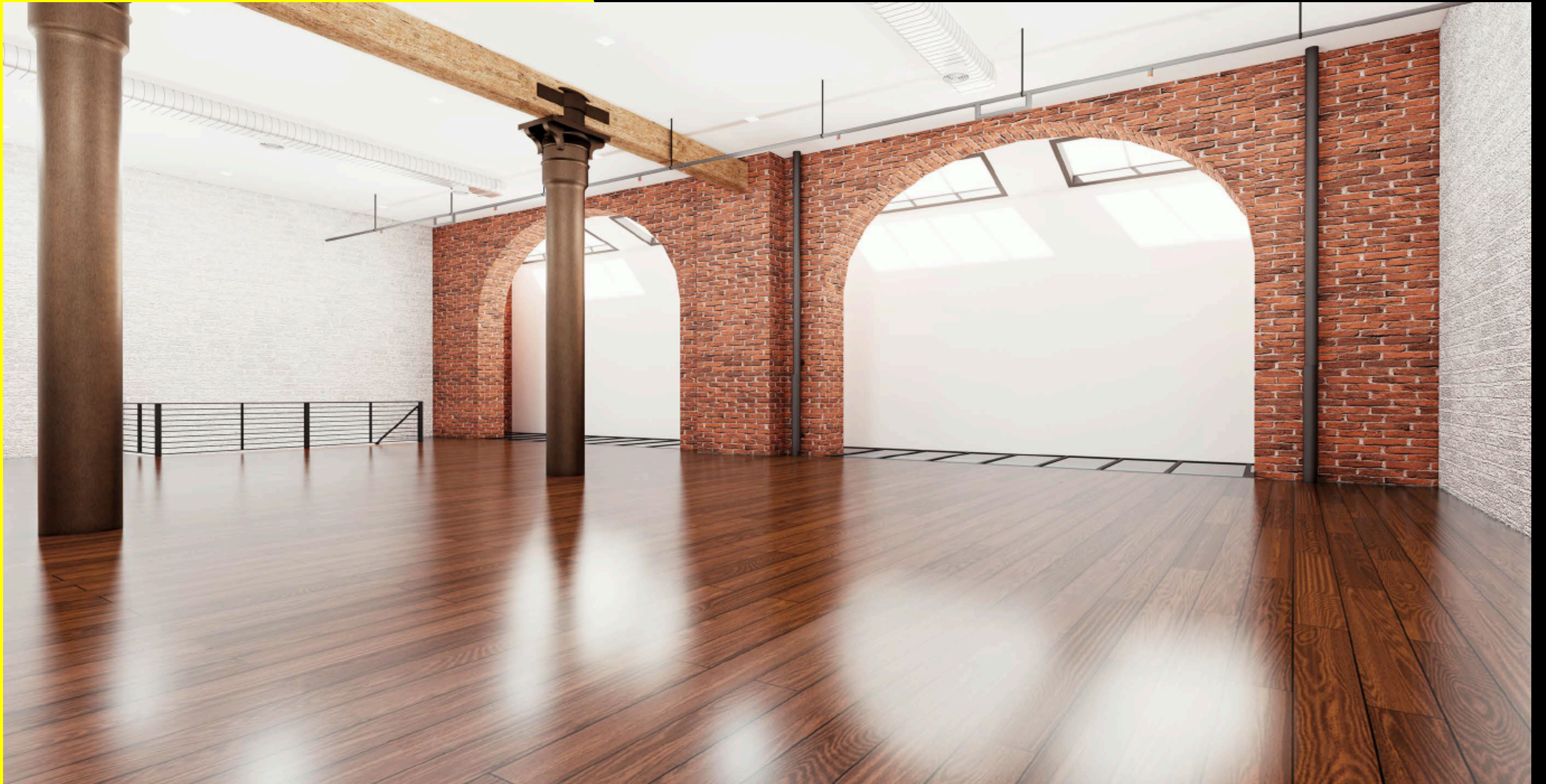
- Prime Tribeca ground-floor commercial condominium
- Approx. 6,500 SF across two full levels (4,000 SF ground floor + 2,500 SF lower level)
- Grand 20-foot exposed brick arches with authentic loft architecture
- 12-foot ceilings on the ground floor with strong front-to-back depth
- 9-foot ceilings on the lower level, fully usable and light-filled
- Skylights and glass floor panels deliver natural light to the lower level
- Exposed steel columns, original materials, and refined industrial character
- 600 amps of power, dedicated HVAC, and private building systems
- Ideal for flagship retail, gallery, showroom, creative studio, or professional offices (no food use)



169 HUDSON



169 HUDSON



169 HUDSON



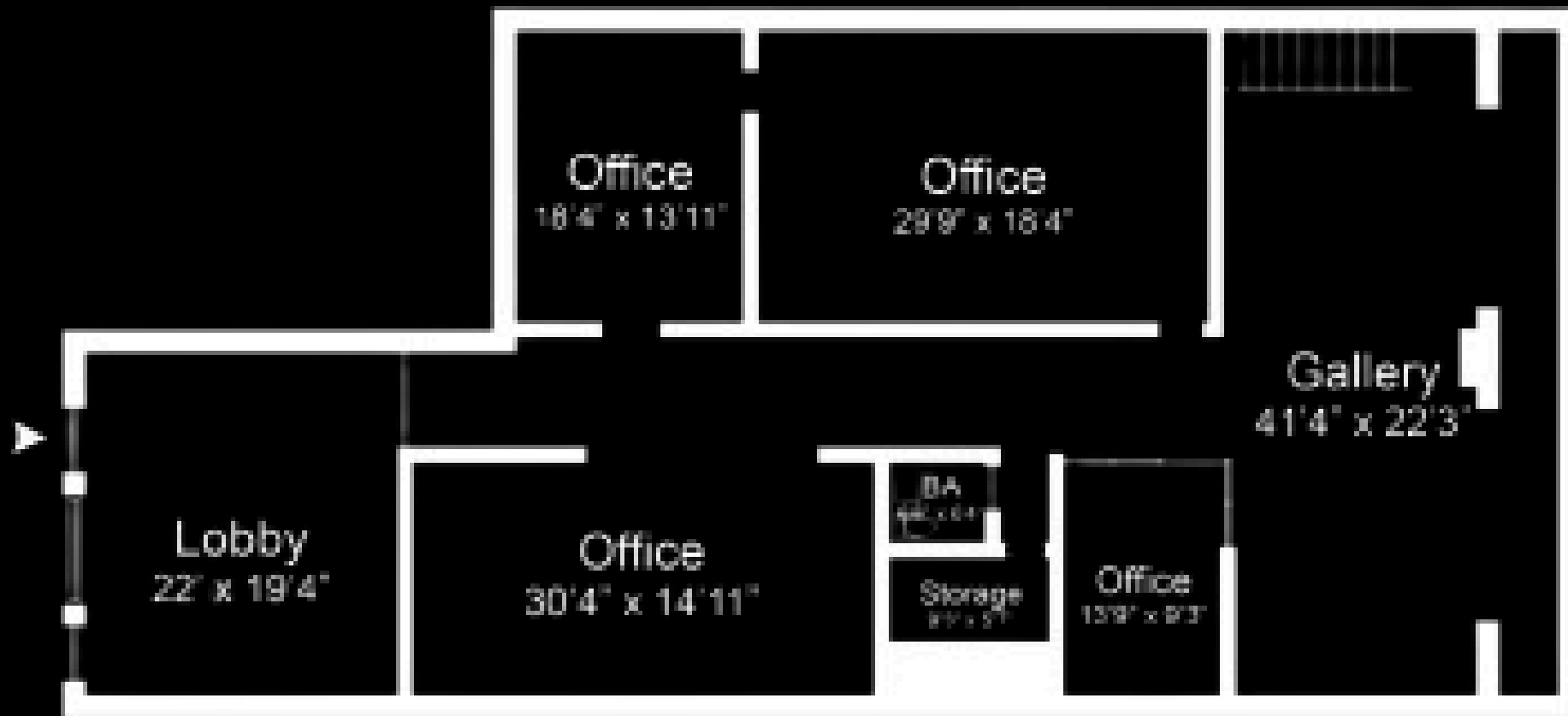
169 HUDSON



169 HUDSON

FLOOR PLANS

GROUND FLOOR



[VIRTUAL TOUR](#)

LOWER LEVEL



[VIRTUAL TOUR](#)



CONTACT

MICHAEL SEGERMAN
msegerman@currentadvisors.com
516.297.3337

CURRENT[®]
Real Estate Advisors