

# OFFICE/MEDICAL CONDO

8180 Lark Brown Road, Suite 302  
Elkridge, Maryland 21075 | Howard County



## FOR LEASE

### NEARBY AMENITIES

STANFORD  
GRILL



Olive  
Garden

OLD LINE

ROYAL TAJ



### PROPERTY INFORMATION

- Building Size: 9,276 square feet
- Suite 302: 1,550 square feet available
- Rate: \$20.00 psf + electric & cleaning
- Parking: 30 surface parking spaces
- Year Built: 2004
- Stories: Three
- Ceiling Height: 10'
- Year Built: 2004

Abby Glassberg  
aglassberg@klnb.com  
443-574-1433

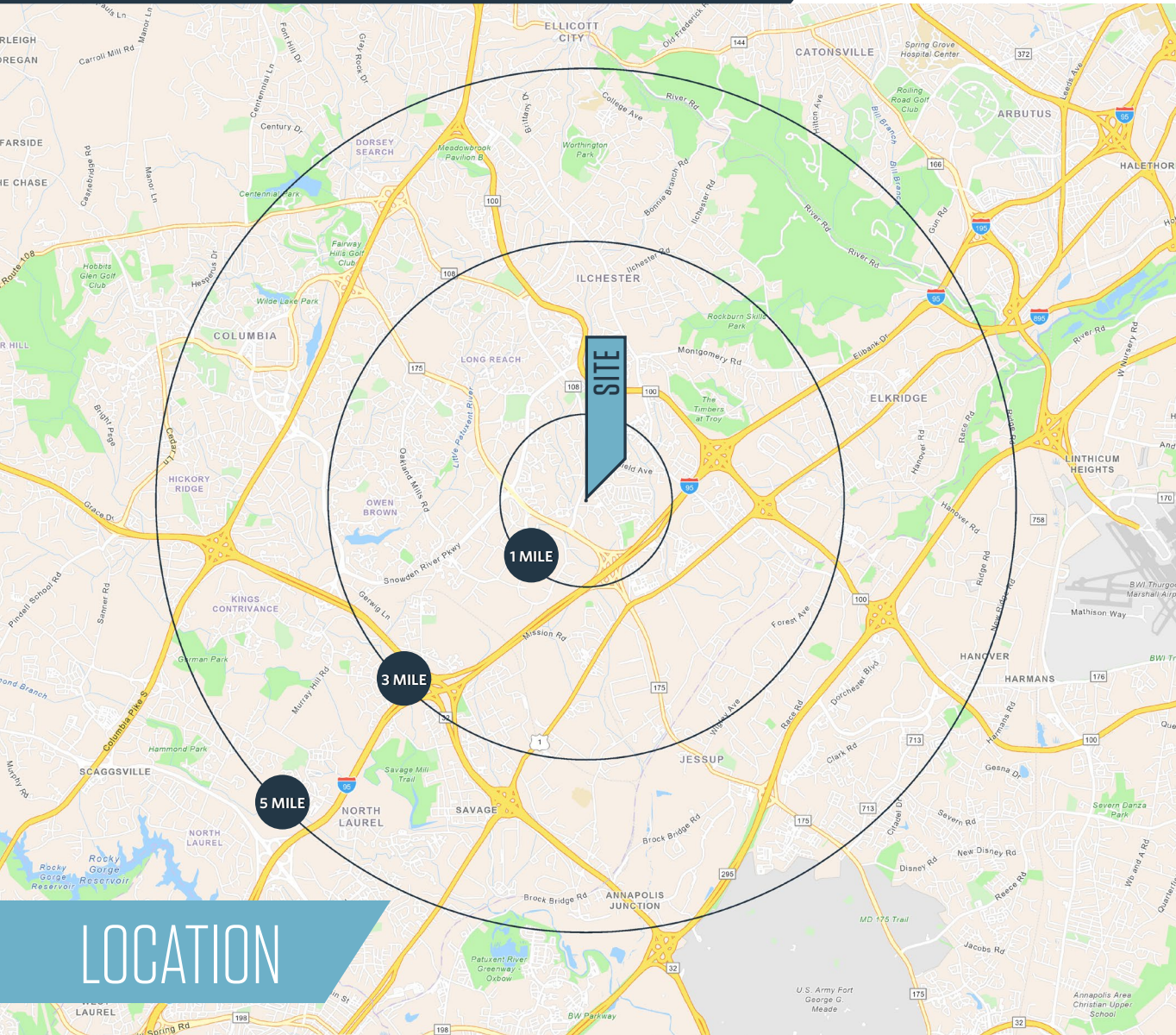
Aaron Carroll  
acarroll@klnb.com  
202-652-2333

9881 Broken Land Pkwy, Suite 300  
Columbia, MD 21046  
klnb.com

NAI klnb

# OFFICE/MEDICAL CONDO

8180 Lark Brown Road, Suite 302  
Elkridge, Maryland 21075 | Howard County



## 3 MILE DEMOS



**POPULATION**  
85,320



**HOUSEHOLDS**  
30,874



**MEDIAN HH INCOME**  
\$135,812



**AVG HOUSEHOLD SIZE**  
2.71



**MEDIAN AGE**  
37.2



**DISPOSABLE INCOME**  
\$104,188

**Abby Glassberg**  
aglassberg@klnb.com  
443-574-1433

**Aaron Carroll**  
acarroll@klnb.com  
202-652-2333

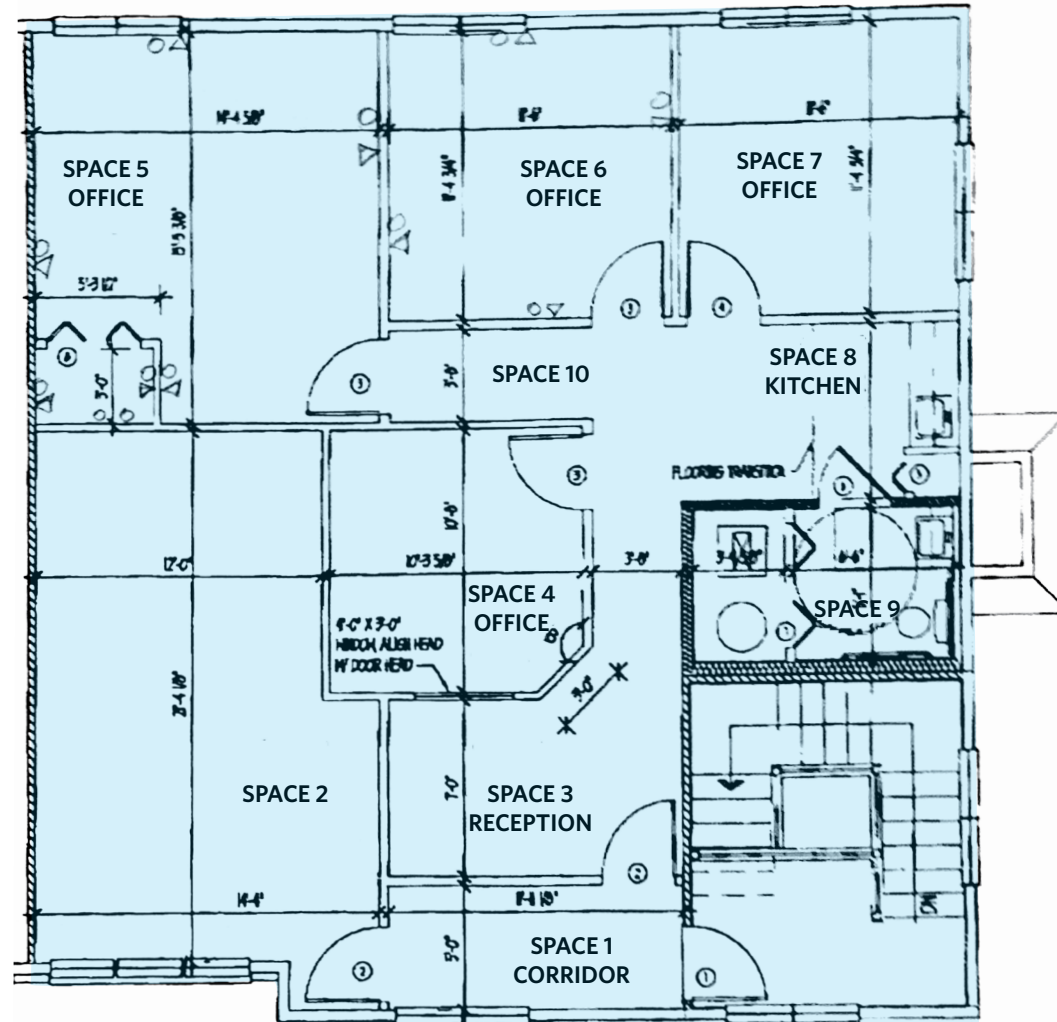
9881 Broken Land Pkwy, Suite 300  
Columbia, MD 21046  
[klnb.com](http://klnb.com)



# OFFICE/MEDICAL CONDO

8180 Lark Brown Road, Suite 302  
Elkridge, Maryland 21075 | Howard County

**SUITE 302**  
1,550 SF



FLOOR PLAN

**Abby Glassberg**  
aglassberg@klnb.com  
443-574-1433

**Aaron Carroll**  
acarroll@klnb.com  
202-652-2333

9881 Broken Land Pkwy, Suite 300  
Columbia, MD 21046  
klnb.com

**NAI**klnb

# OFFICE/MEDICAL CONDO

8180 Lark Brown Road, Suite 302  
Elkridge, Maryland 21075 | Howard County



PHOTOS

**Abby Glassberg**  
aglassberg@klnb.com  
443-574-1433

**Aaron Carroll**  
acarroll@klnb.com  
202-652-2333

9881 Broken Land Pkwy, Suite 300  
Columbia, MD 21046  
[klnb.com](http://klnb.com)

**NAI**klnb

# OFFICE/MEDICAL CONDO

8180 Lark Brown Road, Suite 302  
Elkridge, Maryland 21075 | Howard County



MARKET AERIAL

Abby Glassberg  
aglassberg@klnb.com  
443-574-1433

Aaron Carroll  
acarroll@klnb.com  
202-652-2333

9881 Broken Land Pkwy, Suite 300  
Columbia, MD 21046  
klnb.com



# OFFICE/MEDICAL CONDO

8180 Lark Brown Road, Suite 302  
Elkridge, Maryland 21075 | Howard County

CLICK TO VIEW PROPERTY WEBSITE

For More Information, Please Contact:

**Abby Glassberg**

aglassberg@klnb.com

443-574-1433

**Aaron Carroll**

acarroll@klnb.com

202-652-2333

9881 Broken Land Parkway, Suite 300  
Columbia, Maryland 21046

[klnb.com](http://klnb.com)



[instagram.com/klnbcre](https://www.instagram.com/klnbcre)



[linkedin.com/company/klnb](https://www.linkedin.com/company/klnb)



[facebook.com/KLNBCRE](https://www.facebook.com/KLNBCRE)

While we have no reason to doubt the accuracy of any of the information supplied, we cannot, and do not, guarantee its accuracy. All information should be independently verified prior to a purchase or lease of the property. We are not responsible for errors, omissions, misuse, or misinterpretation of information contained herein and make no warranty of any kind, express or implied, with respect to the property or any other matters.

**NAI** klnb