

OFFICE SPACE FOR LEASE

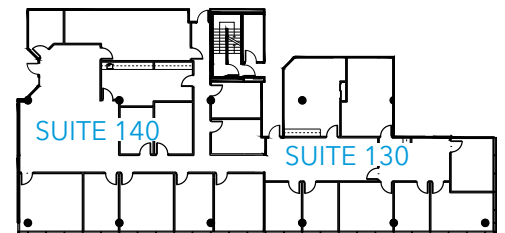
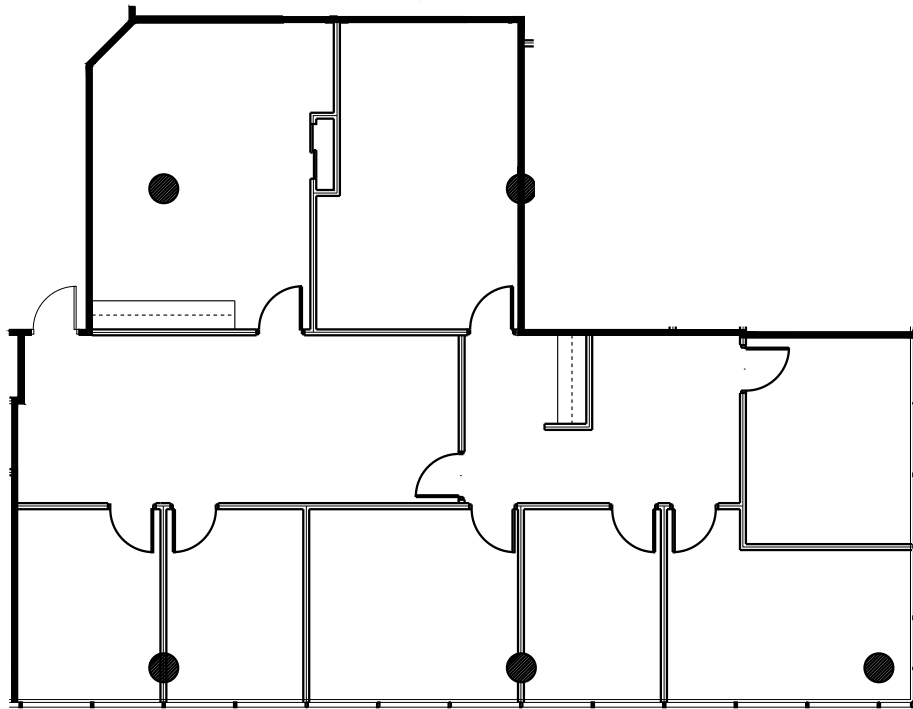
# 455 SHERMAN STREET

DENVER, COLORADO 80203

SUITE 130  
±2,720 RSF

CONTIGUOUS WITH SUITE 140

AVAILABLE NOW



SUITE	SIZE	LAYOUT	AVAILABILITY
130	±2,720 RSF	6 exterior offices, 1 conference room, reception/lobby area, access to restrooms, elevator and stairs	Available Now

**JR BITZER**

303 501 8778  
jrbitzer@lee-associates.com