



CLARION PARTNERS

For Lease

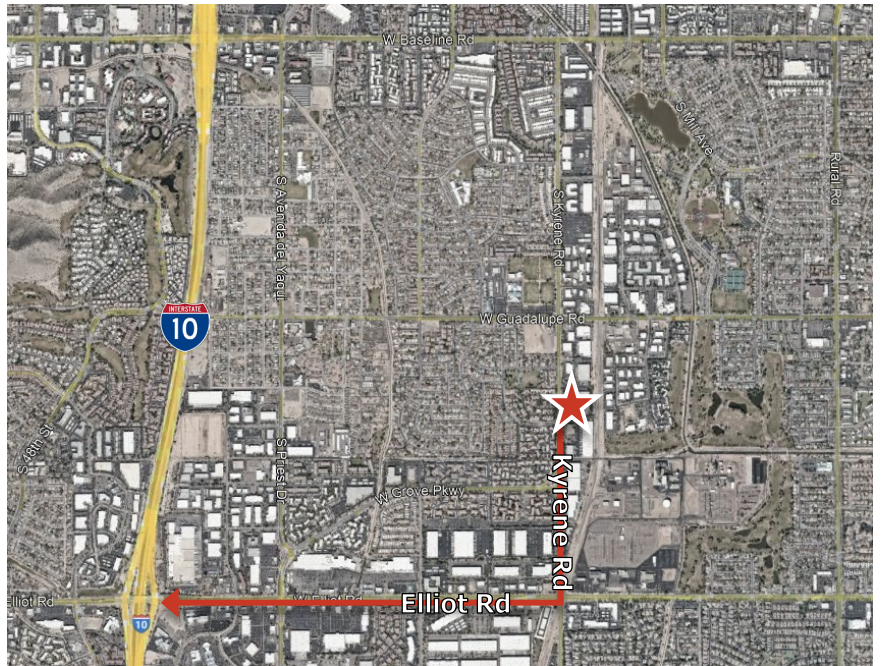
Kyrene Commons South  
6655 S Kyrene Road  
Tempe, AZ

77,500 Square Feet Available



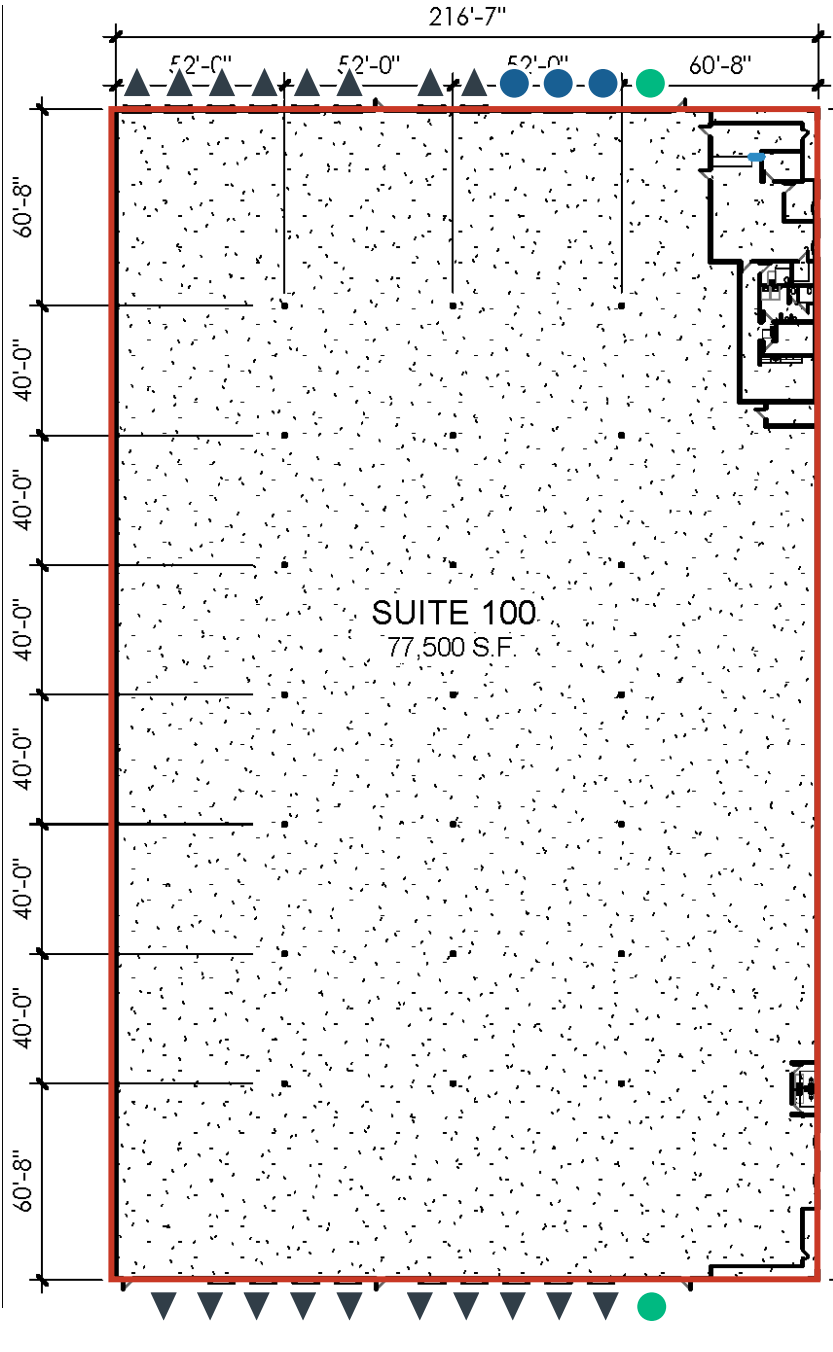
### BUILDING HIGHLIGHTS

- 156,410 SF building
- 77,500 SF available
- 26' clear height
- Dock high and grade level loading
- 52' x 40' column spacing
- ESFR sprinkler system
- Frontage on Kyrene Road
- GID Zoning
- Easy access to full diamond interchange at I-10 Freeway and Elliot Road
- 5 minutes from Sky Harbor International Airport

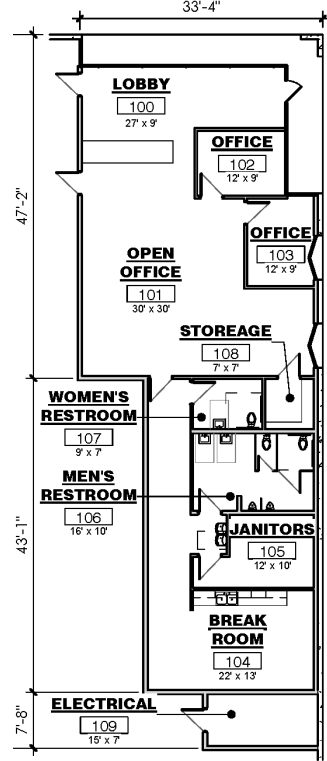




# 77,500 SF Available



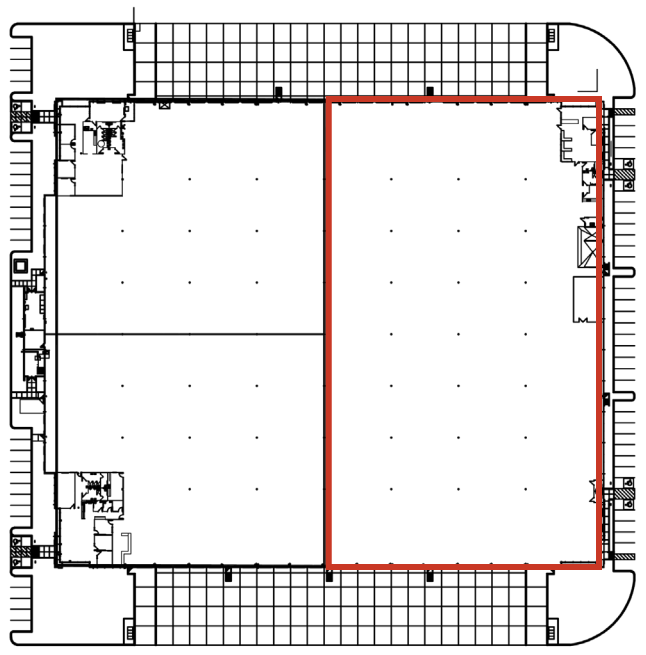
- ▲ Dock High Door
- 9' x 10' Grade Level Door
- 12' x 14' Grade Level Door



2,740 SF office

### SUITE 100

- 77,500 SF available
- 2,740 SF office
- 26' clear height
- 18 dock high doors
- 5 grade level doors
- 52' x 40' column spacing
- ESFR sprinkler system





# CLARION PARTNERS

Kyrene Commons South



## CLARION PARTNERS

[www.clarionpartners.com](http://www.clarionpartners.com)

For more information on this opportunity, please contact



**Steve Larsen, SIOR, CCIM**  
602.282.6296  
[Steve.Larsen@jll.com](mailto:Steve.Larsen@jll.com)

**Kyle Westfall, SIOR**  
602.451.3057  
[Kyle.Westfall@jll.com](mailto:Kyle.Westfall@jll.com)