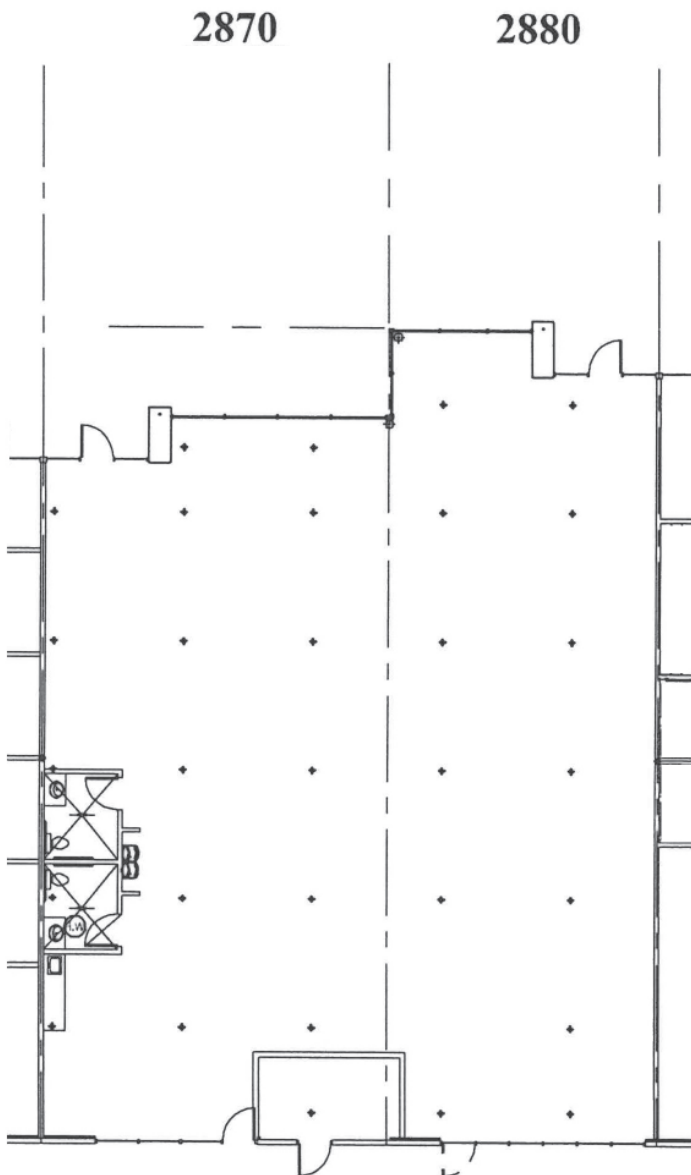


**4,076 SF OFFICE SPACE AVAILABLE**  
**BUILDING 28, SUITES 2870-2880**

9611 NE 117TH AVENUE, SUITES 2870-2880, VANCOUVER, WA 98682



**SUITES 2870-2880**  
**HIGHLIGHTS & FEATURES**

- 4,076 SF Office Space
- On-Site Property Management
- Ample Parking
- Restaurants and Retail Amenities nearby: Los Jalapenos, Columbia Credit Union, Papa John's Pizza, Chevron, Seize the Bagel & Many More
- **Landlord willing to complete modest buildout**

[paddencp.com](http://paddencp.com)

**Available Now**



### NOW AVAILABLE! BUILDING 28, SUITES 2870-2880

9611 NE 117th Avenue, Suites 2870-2880, Vancouver, WA 98682



#### LEASING CONTACTS

Coleman Brown, CCIM, Principal Broker  
Columbia Commercial, LLC  
Coleman@CCPprop.com  
360.952.4758

[paddencp.com](http://paddencp.com)

