

CAMPBELL

Commercial Partners LLC

945 E PARK DR, HARRISBURG, PA 17111

4,190+/- SF OFFICE

LEASE



525 N. 12th Street, Suite 203
Lemoyne, PA 17043
717.737.6161
www.acampbell.net

JESSICA GASPER
717.979.5189
jessica@acampbell.net

LEASE

OFFERING SUMMARY

Available SF:	4,190 +/-
Lease Rate:	\$16.95 / SF
Lease Term:	Negotiable
Municipality:	Lower Paxton
Zoning:	BC - Business Campus



PROPERTY OVERVIEW

- First floor office/flex available for lease
- Includes offices, conference, open areas & kitchenette
- Drive-in door
- Centrally located off Union Deposit Road and Interstate-83
- Within close proximity to many amenities including UPMC hospital, hotels and shopping centers

Although the subject information was obtained from sources deemed reliable, it cannot be warranted. It is submitted subject to errors, omissions, changes in price or other conditions, prior sale, lease, or withdrawal from the market. Unless specified in writing otherwise, Campbell Commercial Partners, LLC is acting as agent of the Seller/Lessor.

PROPERTY DETAILS

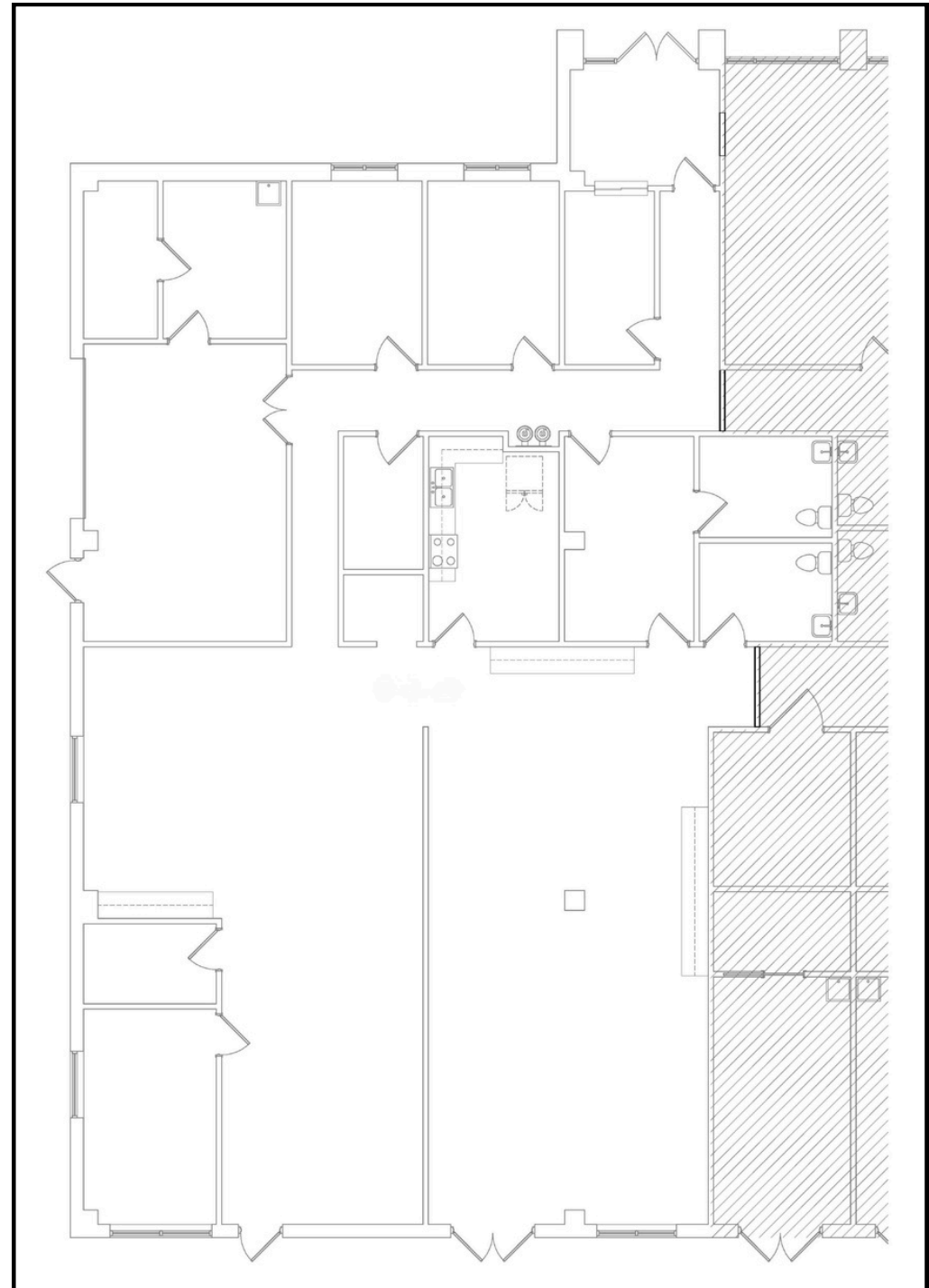
Space Type: Office/Flex
Floor Type: Tile, carpet tile
Lighting: Recessed, fluorescent
Ceiling Type: Suspended tile
Restrooms: Two single use restrooms
Sprinklered: Yes
Internet: Comcast

Street Address: 945 E Park Dr
City, State, Zip: Harrisburg, PA 17111
Municipality: Lower Paxton
County: Dauphin
Zoning: BC - Business Campus

Available SF: 4,190 +/- SF
Lease Rate: \$16.95 / SF In-suite Janitorial + Electric
Lease Term: Negotiable
Parking: In common, on-site
Signage: Monument sign at entrance of building

Although the subject information was obtained from sources deemed reliable, it cannot be warranted. It is submitted subject to errors, omissions, changes in price or other conditions, prior sale, lease, or withdrawal from the market. Unless specified in writing otherwise, Campbell Commercial Partners, LLC is acting as agent of the Seller/Lessor.

FLOOR PLAN - SUITE 102





Although the subject information was obtained from sources deemed reliable, it cannot be warranted. It is submitted subject to errors, omissions, changes in price or other conditions, prior sale, lease, or withdrawal from the market. Unless specified in writing otherwise, Campbell Commercial Partners, LLC is acting as agent of the Seller/Lessor.