

2600 AUBURN ROAD
AUBURN HILLS, MICHIGAN

HI-TECH / INDUSTRIAL BUILDING
FOR SALE OR LEASE

22,290 Square Feet Available

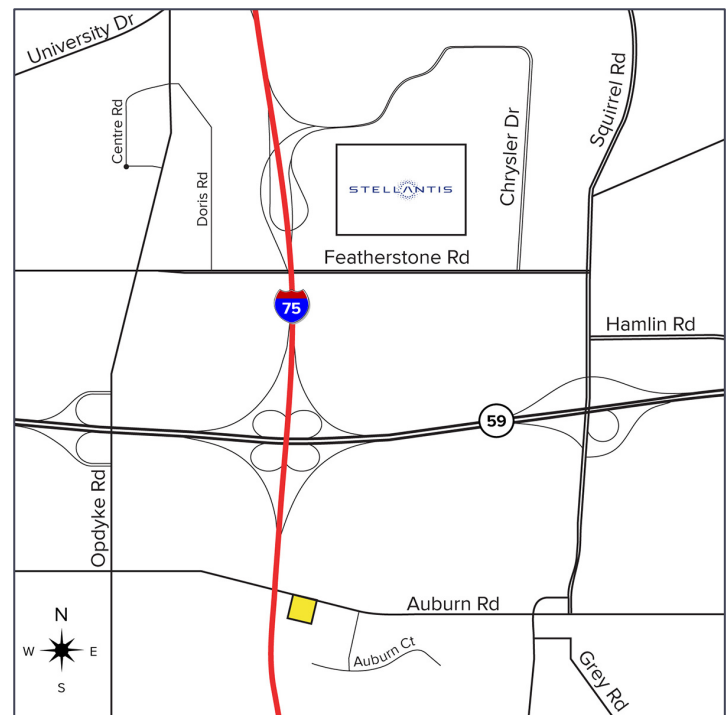


**SIGNATURE
ASSOCIATES**
KNOW SIGNATURE | KNOW RESULTS



PROPERTY FEATURES

- 22,290 square feet available
- 22' clear height
- (3) 12' x 14' grade level doors, (1) truckwell
- 1200 amps, 480 volts, 3 phase power
- Zoned light industrial
- High image industrial building that fronts on I-75 and Auburn Road close to M-59
- Solar panels available for the tenants use if they choose to use them for supplemental energy to the building
- Fiber optics available
- 65 parking spaces
- Sale Possible
- Lease Rate: \$8.95/sq. ft. NNN
- Sale Price: \$3,009,150 (\$135.00/sq. ft.)



For more information, please contact:

KRIS PAWLOWSKI
(248) 359 3801
kpawlowski@signatureassociates.com

SIGNATURE ASSOCIATES
One Towne Square, Suite 1200
Southfield, MI 48076
www.signatureassociates.com

2600 Auburn Road – Auburn Hills, Michigan

Hi-Tech/Industrial Building For Sale or Lease

22,290
Square Feet
AVAILABLE

First Floor Offices and Collaborate Suites



For more information, please contact:

KRIS PAWLOWSKI
(248) 359 3801
kpawlowski@signatureassociates.com

SIGNATURE ASSOCIATES
One Towne Square, Suite 1200
Southfield, MI 48076
www.signatureassociates.com

2600 Auburn Road – Auburn Hills, Michigan

Hi-Tech/Industrial Building For Sale or Lease

22,290
Square Feet
AVAILABLE

Second Floor Corporate Suites



For more information, please contact:

KRIS PAWLOWSKI
(248) 359 3801
kpawlowski@signatureassociates.com

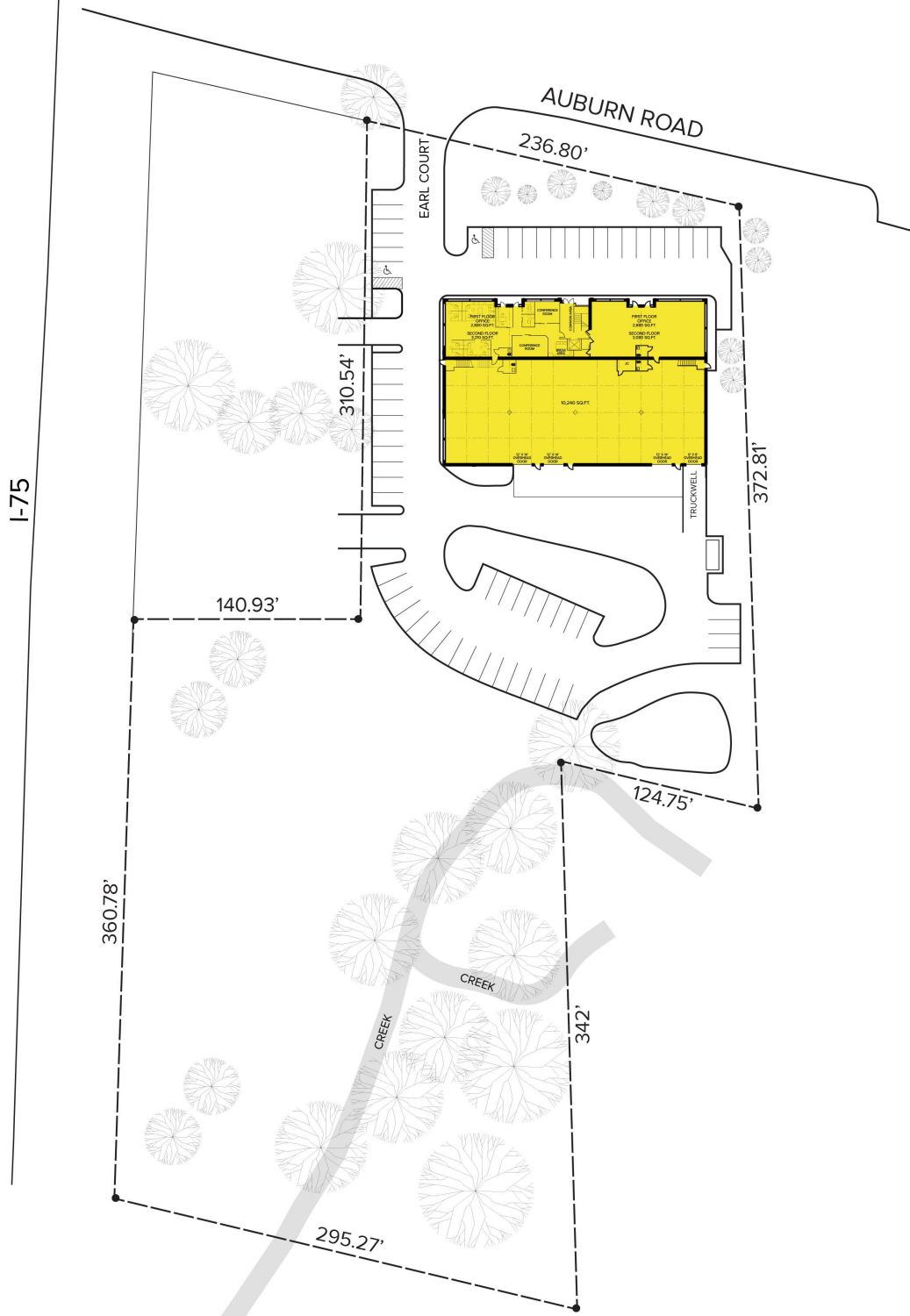
SIGNATURE ASSOCIATES
One Towne Square, Suite 1200
Southfield, MI 48076
www.signatureassociates.com

2600 Auburn Road – Auburn Hills, Michigan

Hi-Tech/Industrial Building For Sale or Lease

22,290
Square Feet
AVAILABLE

Site Plan



For more information, please contact:

KRIS PAWLOWSKI
(248) 359 3801
kpawlowski@signatureassociates.com

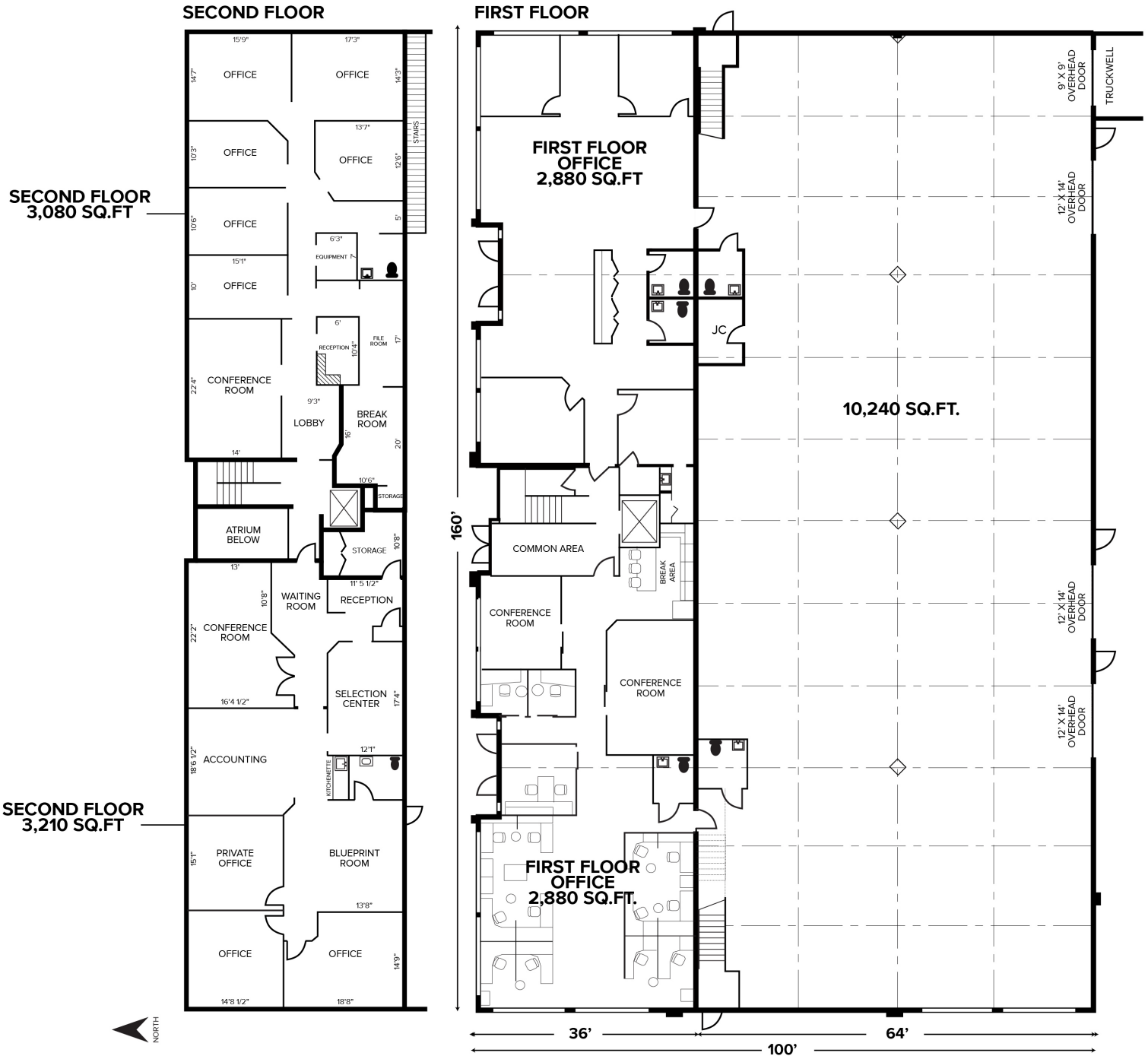
SIGNATURE ASSOCIATES
One Towne Square, Suite 1200
Southfield, MI 48076
www.signatureassociates.com

2600 Auburn Road – Auburn Hills, Michigan

Hi-Tech/Industrial Building For Sale or Lease

22,290
Square Feet
AVAILABLE

Floor Plan



For more information, please contact:

KRIS PAWLOWSKI
(248) 359 3801
kpawlowski@signatureassociates.com

SIGNATURE ASSOCIATES
One Towne Square, Suite 1200
Southfield, MI 48076
www.signatureassociates.com

2600 Auburn Road – Auburn Hills, Michigan

Hi-Tech/Industrial Building For Sale or Lease

22,290
Square Feet
AVAILABLE

Aerial



For more information, please contact:

KRIS PAWLOWSKI
(248) 359 3801
kpawlowski@signatureassociates.com

SIGNATURE ASSOCIATES
One Towne Square, Suite 1200
Southfield, MI 48076
www.signatureassociates.com