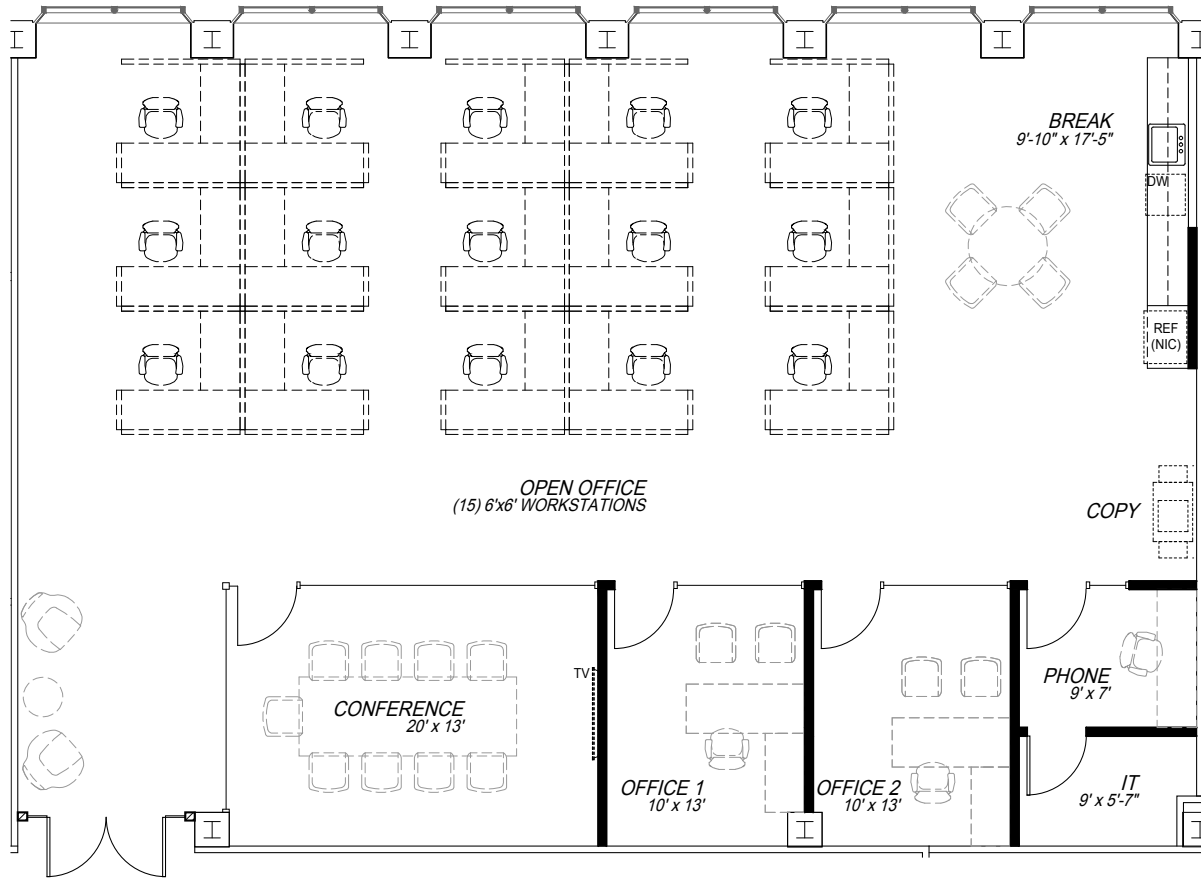




# FLOOR PLAN



FULLY BUILT-OUT MODERN SPEC SPACE  
**DELIVERING Q1 2026**

### LEASE INFORMATION

<b>Building</b>	Lloyd Center Tower
<b>Address</b>	825 NE Multnomah St
<b>Floor</b>	Ninth
<b>Suite</b>	935
<b>Total SF</b>	3,043 RSF



**JEFF FALCONER, SIOR**  
Principal | Licensed in OR  
503-542-4346  
jeff@capacitycommercial.com

**MCCOY DOERRIE, SIOR**  
Senior Vice President | Licensed in OR & WA  
503-523-7751  
mccoy@capacitycommercial.com