

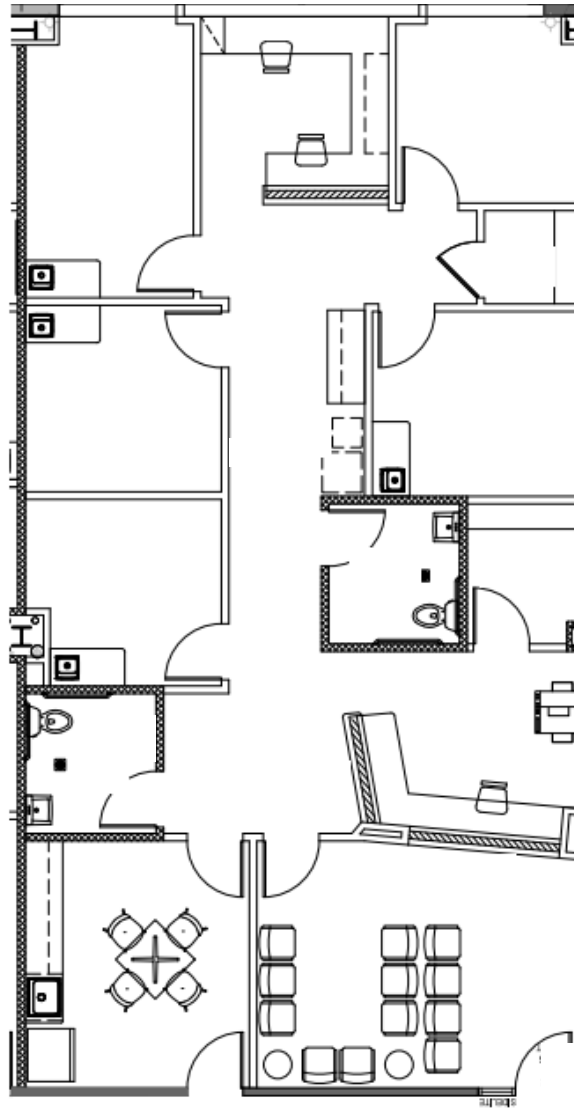
Two Fannin

7500 FANNIN

LEVEL 2

Suite 245: 2,025 RSF

SPEC SUITE



Leasing Information:

Ashley Cassel Byrd | SVP

713.490.3785

Ashley.Byrd@transwestern.com

Sarah Carter | VP

713.231.1629

Sarah.Carter@transwestern.com

The information provided herein was obtained from sources believed reliable; however, Transwestern makes no guarantees, warranties or representations as to the completeness of accuracy thereof. The presentation of this property is submitted subject to errors, omissions, change of price or conditions, prior to sale or lease, or withdrawal without notice. Copyright © 2023 Transwestern.

Two Fannin

7500 FANNIN

LEVEL 2

Suite 245: 2,025 RSF

SPEC SUITE

SUITE FINISHES



VF1: MOHAWK GROUP
LIVING LOCAL | 210 FAWN
(LUXURY VINYL TILE)



BS1: JOHNSONITE
195 ASH WG
(WALL BASE)



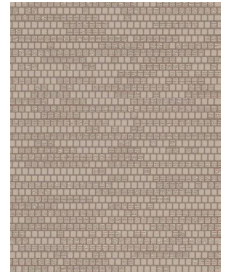
T1: ARIZONA TILE
METALWOOD | PLATINO
(PORCELAIN TILE)



T2: ARIZONA TILE
SMOOTH | WHITE GLOSSY
(PORCELAIN TILE)



SS1: CAMBRIA
CALACATTA NOVELLO
(SOLID SURFACE)



WC1: CREATE
PIXEL | CSD-PXL-06
(WALL COVERING)



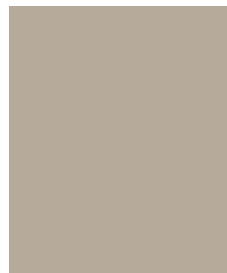
PL2: FORMICA
(COUNTERTOP)
5875-58 NEUTRAL WEFT
(PLASTIC LAMINATE)



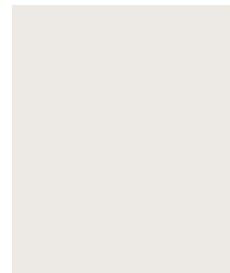
PL3: NEVAMAR
(MILLWORK)
WX2000T ECRU
(PLASTIC LAMINATE)



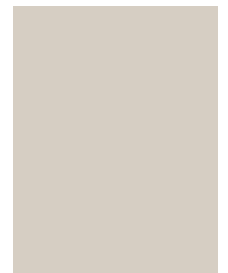
PL4: NEVAMAR
(INTERIOR DOORS)
AT7500TL PENNY LANE
(PLASTIC LAMINATE)



PL5: WILSONART
(MILLWORK)
D327-60 PEPPERDUST
(PLASTIC LAMINATE)



PT1: SHERWIN WILLIAMS
SW 7004 SNOWBOUND
(FIELD PAINT)



PT2: SHERWIN WILLIAMS
SW 7632 MODERN GRAY
(ACCENT PAINT)

Leasing Information:

Ashley Cassel Byrd | SVP
713.490.3785
Ashley.Byrd@transwestern.com

Sarah Carter | VP
713.231.1629
Sarah.Carter@transwestern.com

The information provided herein was obtained from sources believed reliable; however, Transwestern makes no guarantees, warranties or representations as to the completeness of accuracy thereof. The presentation of this property is submitted subject to errors, omissions, change of price or conditions, prior to sale or lease, or withdrawal without notice. Copyright © 2023 Transwestern.