



SUITE 1051

1,994 SF

ASKING RATE

Please contact listing agents

ADDITIONAL RENT

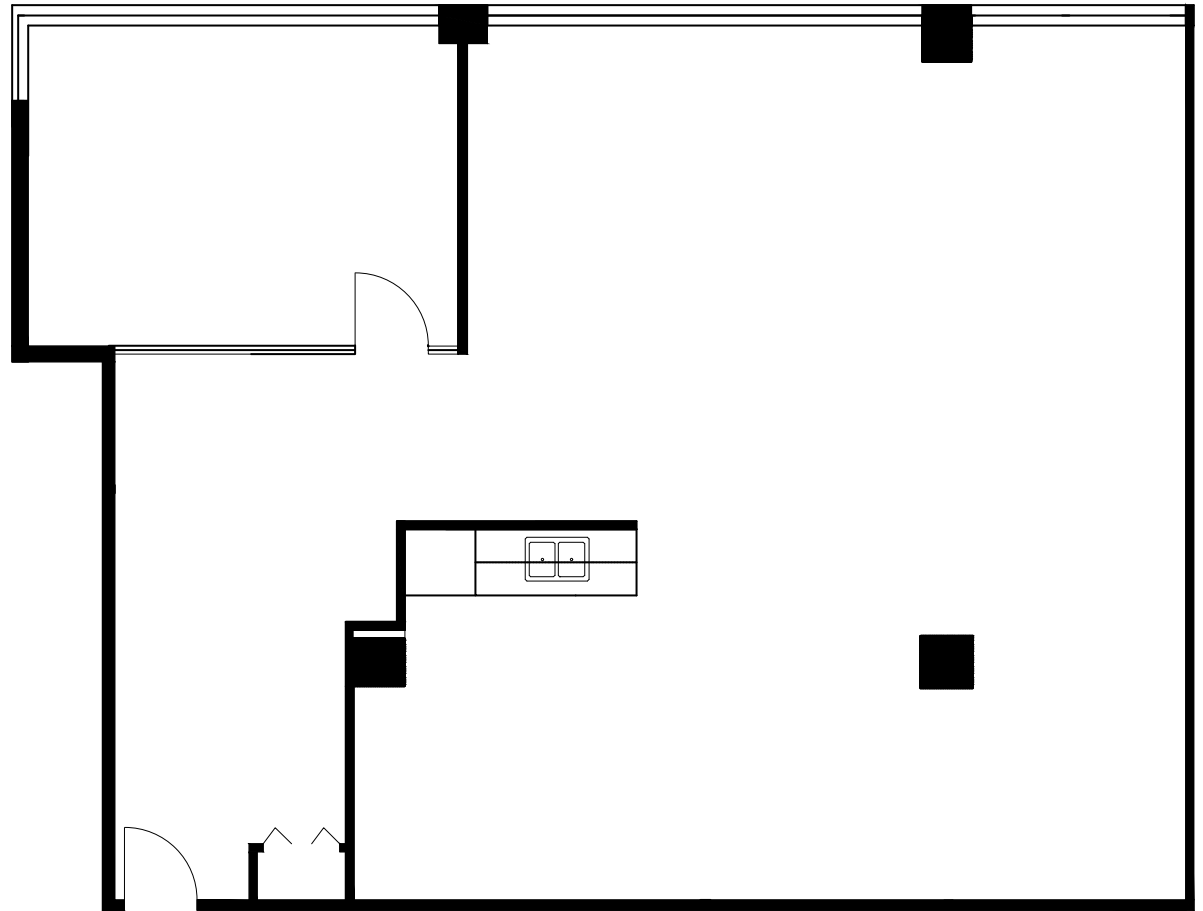
\$22.49 psf/pa (2026 estimate)

AVAILABILITY

Immediate

NOTES

Meeting room, kitchenette, and large open work area



MARK CHAMBERS*

Executive Vice President
604 998 6005

Mark.Chambers@jll.com

GRAHAM HYSLOP

Associate
604 354 7284

Graham.Hyslop@jll.com

*Personal Real Estate Corporation