

MEDICAL/OFFICE FOR LEASE
73-271 FRED WARING DRIVE
PALM DESERT, CA 92260



SUITE 103 - 1,750 SF - \$2.10/SF/MO NNN

- ★ High image building with Fred Waring Drive frontage
- ★ 5 treatment rooms/private offices
- ★ Floor to ceiling windows (abundant natural light)
- ★ Generous parking | 5 spaces | 1,000 SF
- ★ 2 restrooms in suite
- ★ Professional business environment
- ★ Clean, quiet location
- ★ Across street from College of the Desert and Palm Desert Branch Library

Arthur Holland
aholland@leedesert.com
760.346.2577
Lic #00886270

Dave Rapp
drapp@leedesert.com
760.346.2570
Lic #01715126



All information furnished regarding property for sale, rental or financing is from sources deemed reliable, but no warranty or representation is made to the accuracy thereof and same is submitted to errors, omissions, change of price, rental or other conditions prior to sale, lease or financing or withdrawal without notice. No liability of any kind is to be imposed on the broker herein.

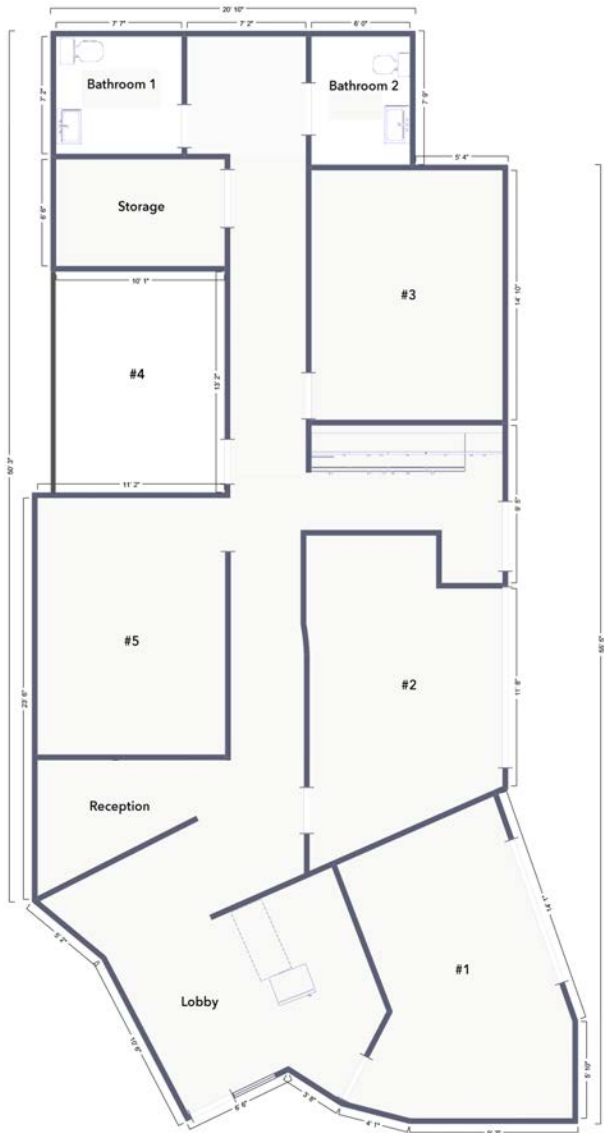
MEDICAL/OFFICE FOR LEASE
73-271 FRED WARING DRIVE
PALM DESERT, CA 92260

SITE PLAN



All information furnished regarding property for sale, rental or financing is from sources deemed reliable, but no warranty or representation is made to the accuracy thereof and same is submitted to errors, omissions, change of price, rental or other conditions prior to sale, lease or financing or withdrawal without notice. No liability of any kind is to be imposed on the broker herein.

SUITE 103 - FLOOR PLAN



All information furnished regarding property for sale, rental or financing is from sources deemed reliable, but no warranty or representation is made to the accuracy thereof and same is submitted to errors, omissions, change of price, rental or other conditions prior to sale, lease or financing or withdrawal without notice. No liability of any kind is to be imposed on the broker herein.