

4,237 SF RETAIL/OFFICE SPACE AT THE BRADLEY BUILDING! 1228 W 6TH ST, CLEVELAND, OHIO 44113

FOR LEASE



LOCATED IN THE HEART OF THE
WAREHOUSE DISTRICT AND NEAR
SHERWIN WILLIAMS GLOBAL HQ

CONTACT:

Vince Mingo
Vice President
216 535 0188
vince.mingo@cbre.com



CBRE

THE OPPORTUNITY

- 4,237 SF of Retail or Office space available in the heart of Cleveland's Warehouse District!
— Additional 2,162 SF Lower Level space
- Located on the ground floor of the 8-floor, 139,822 SF mixed-use Bradley Building.
- The Warehouse District is home to close to 3,000 residents
- Join neighboring retailers and restaurants including Barley House, Ivy, Dive Bar, Starbucks, Acqua Di Luca, Blue Point Grille, Insomnia Cookies, Cleveland Chop, Surroundings Home Décor and many more!
- Located a block from the new Sherwin Williams Global Headquarters!
- Excellent downtown traffic counts of 10,664 VPD along W 6th Street (Source: ODOT TMS)
- Great daytime population with 60,204 people within a 1-mile radius



QUICK STATS - 1 MILE RADIUS



DAYTIME
POPULATION

60,204



2025
POPULATION

15,989



2025
HOUSEHOLDS

10,120



2025
POPULATION
25 & OVER

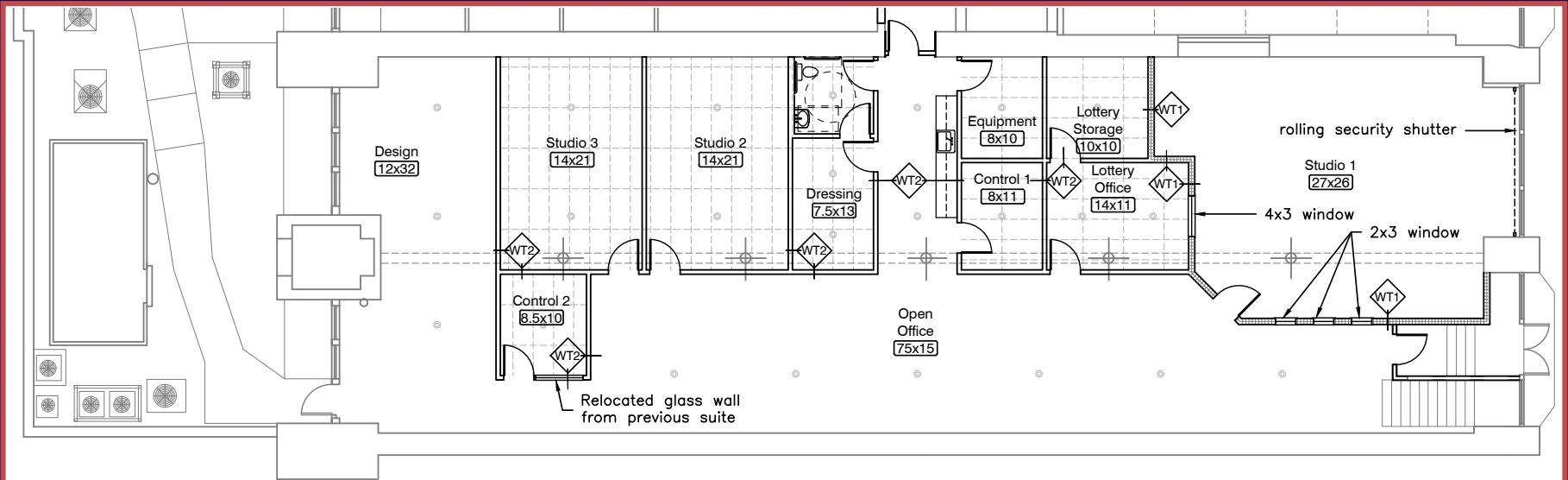
12,065



2025
AVG. HOUSEHOLD
INCOME

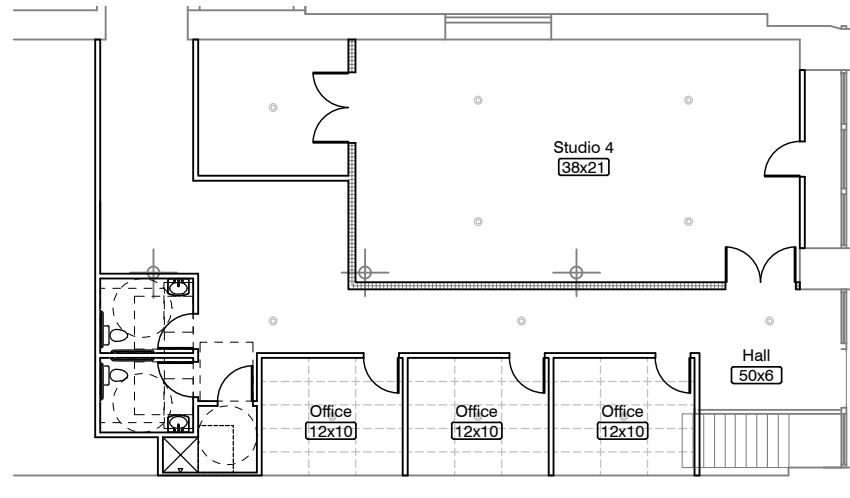
\$94,065

FLOOR PLAN



1st FLOOR PLAN

3/32" = 1'-0"



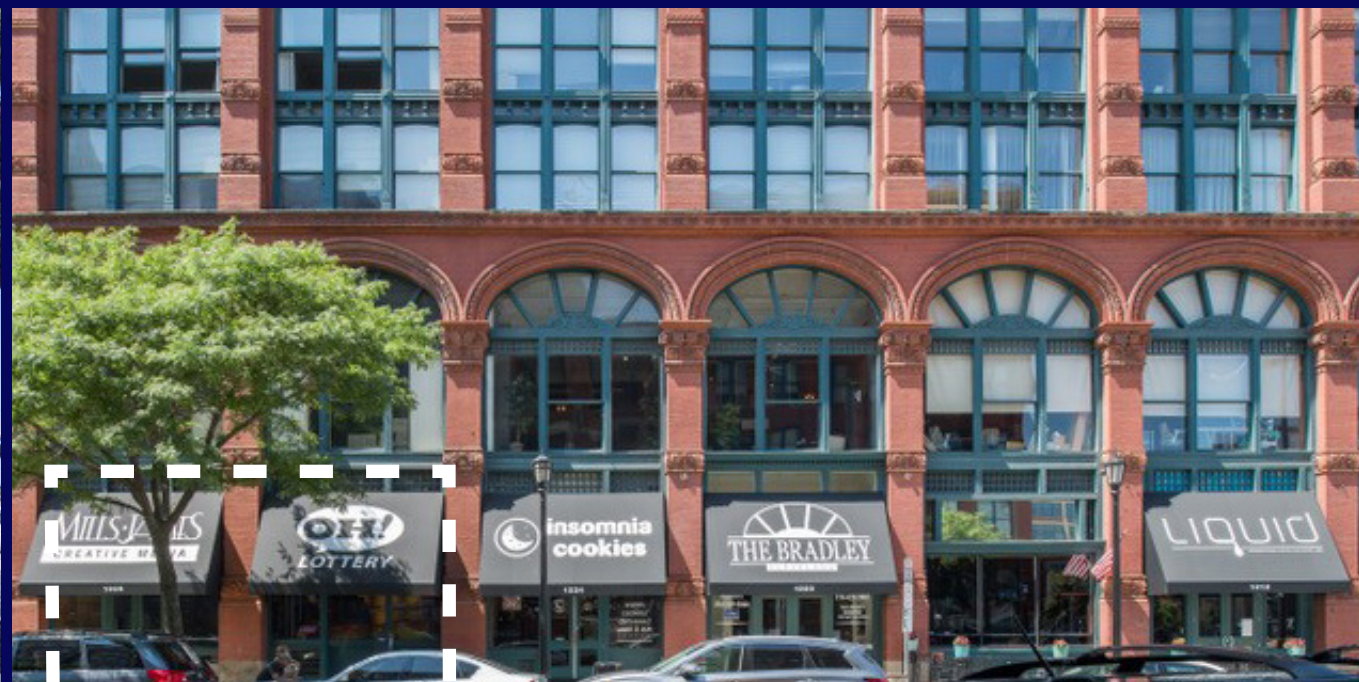
BASEMENT PLAN

3/32" = 1'-0"

4,237 SF RETAIL/OFFICE



4,237 SF RETAIL/OFFICE



Downtown Cleveland

RETAIL TRADE AREA



WORKFORCE & INNOVATION

- 105,000 jobs in Downtown Cleveland
- 31.8 MSF total office space
- Fortune 500 HQ's: Sherwin Williams & KeyBank
- Largest "Job Hub" in Ohio
- #4 in Midwest attracting biomedical investment dollars
- 8th fastest growing market for tech talent

LIVING

- 20,000+ Residents live in downtown
- Largest downtown population in Ohio
- 89% occupancy rate
- Monthly rent for a one bedroom apartment: \$818 - \$1,934

HOSPITALITY MARKET

- 19 Hotels totaling 4,853 rooms
- Average daily room rate - \$183.25
- Two AAA Four Diamond Hotels

DINING

- Over 250 restaurants and clubs
- Known for award winning cuisine and nationally acclaimed chefs

SPORTS & ENTERTAINMENT

- Three pro sports teams: Cleveland Browns, Cleveland Indians, Cleveland Cavaliers
- Jack Casino: 13M annual visitors
- Rocket Mortgage Fieldhouse: 2M visitors and over 200 events per year

MAJOR ATTRACTIONS

- Playhouse Square: Second largest theater district in the U.S.
- Rock n' Roll Hall of Fame
- Cleveland Aquarium
- Great Lakes Science Center
- Huntington Convention Center: \$90 - \$100 million of economic impact

Sources:

1. Downtown Cleveland Alliance
2. BioEnterprise
3. CBRE

© 2024 CBRE, Inc. All rights reserved. This information has been obtained from sources believed reliable, but has not been verified for accuracy or completeness. You should conduct a careful, independent investigation of the property and verify all information. Any reliance on this information is solely at your own risk. CBRE and the CBRE logo are service marks of CBRE, Inc. All other marks displayed on this document are the property of their respective owners, and the use of such logos does not imply any affiliation with or endorsement of CBRE.
Licensed Real Estate Broker.
Updated: June 11, 2024 MOS: 425684

DEMOGRAPHICS

	1 MILE	3 MILES	5 MILES
2025 Population - Current Year Estimate	15,989	80,496	230,138
2030 Population - Five Year Projection	17,549	83,133	231,677
2025 Daytime Population	60,204	154,132	365,746
2025 Households - Current Year Estimate	10,120	39,172	107,975
2025 Average Household Income	\$94,065	\$76,702	\$66,684
2030 Average Household Income Projection	\$103,993	\$86,675	\$75,153
2025 Median Household Income	\$64,469	\$48,117	\$44,585
2025 Per Capita Income	\$56,755	\$37,621	\$31,411
2025 Population 25 and Over	12,065	56,219	158,937

RETAIL CONTACT

VINCE MINGO

Vice President
216 535 0188
vince.mingo@cbre.com

WARREN BLAZY III

Senior Vice President
330 606 5917
warren.blazy@cbre.com

ERIC SMITH

Senior Associate
330 714 6558
eric.smith3@cbre.com

OFFICE CONTACTS

© 2026 CBRE, Inc. All rights reserved. This information has been obtained from sources believed reliable, but has not been verified for accuracy or completeness. You should conduct a careful, independent investigation of the property and verify all information. Any reliance on this information is solely at your own risk. CBRE and the CBRE logo are service marks of CBRE, Inc. All other marks displayed on this document are the property of their respective owners, and the use of such logos does not imply any affiliation with or endorsement of CBRE. Photos herein are the property of their respective owners. Use of these images without the express written consent of the owner is prohibited. Licensed Real Estate Broker.

