



# BEAR'S LAIR LODGE

21998 LASALLE AVE NW, PUPOSKY, MN 56667



## CONTACT US

### SHEILA JOHNSON

CEO + Broker

(218) 556-9361

sheila@sjcommercialadvisors.com

sjcommercialadvisors.com



**21998 LASALLE AVE NW**

PUPOSKY, MN 56667



## PROPERTY OVERVIEW

Bear's Lair Lodge is a private Northwoods destination property offering exceptional versatility in a secluded, wooded setting in Northern Minnesota. Designed to support group experiences and extended stays, the property includes multiple lodging buildings and dedicated gathering spaces, making it well suited for retreat, rental, event, or private estate use.

The layout intentionally separates accommodations from common areas, enhancing privacy, functionality, and guest experience. This configuration naturally supports weddings, corporate off-sites, wellness retreats, and family compounds. Rather than a traditional lodge investment, Bear's Lair Lodge presents a lifestyle-driven asset with flexible use potential across retreat, rental, and event-based applications.

With its established infrastructure, expansive acreage, and adaptable footprint, the property is positioned for continued use or repositioning as a destination retreat or experiential property within one of Northern Minnesota's most sought-after natural environments.



# PROPERTY SUMMARY

Property Type	Special Purpose
Sub-Type	Sports / Entertainment
Year Built	1992
Renovations	2004, 2019
Buildings	5
Stories	2
Land Area	Approximately 240 Acres
Ownership	Fee Simple
Zoning	Special Protection Shoreland Management





# Investment Highlights

## **DESTINATION-STYLE NORTHWOODS PROPERTY**

Private, wooded setting designed for group experiences, retreats, and extended stays.

## **HIGHLY FLEXIBLE USE POTENTIAL**

Well suited for estate ownership, boutique vacation rental, corporate or nonprofit retreat center, private events, or wedding venue.

## **MULTIPLE LODGING STRUCTURES & GATHERING SPACES**

Existing improvements support group accommodations, meetings, celebrations, and hosted experiences.

## **SECLUDED SETTING WITH EXPERIENTIAL APPEAL**

Immersive Northwoods environment offering privacy, tranquility, and a true destination feel.

## **LIFESTYLE-DRIVEN ASSET WITH INCOME OPTIONALITY**

Appeals to owners or investors seeking experiential value with the option for retreat, rental, or event-based revenue.

## **INFRASTRUCTURE IN PLACE FOR REPOSITIONING**

Physical layout and site design allow for enhancement, branding, or operational expansion without reliance on year-round tourism.

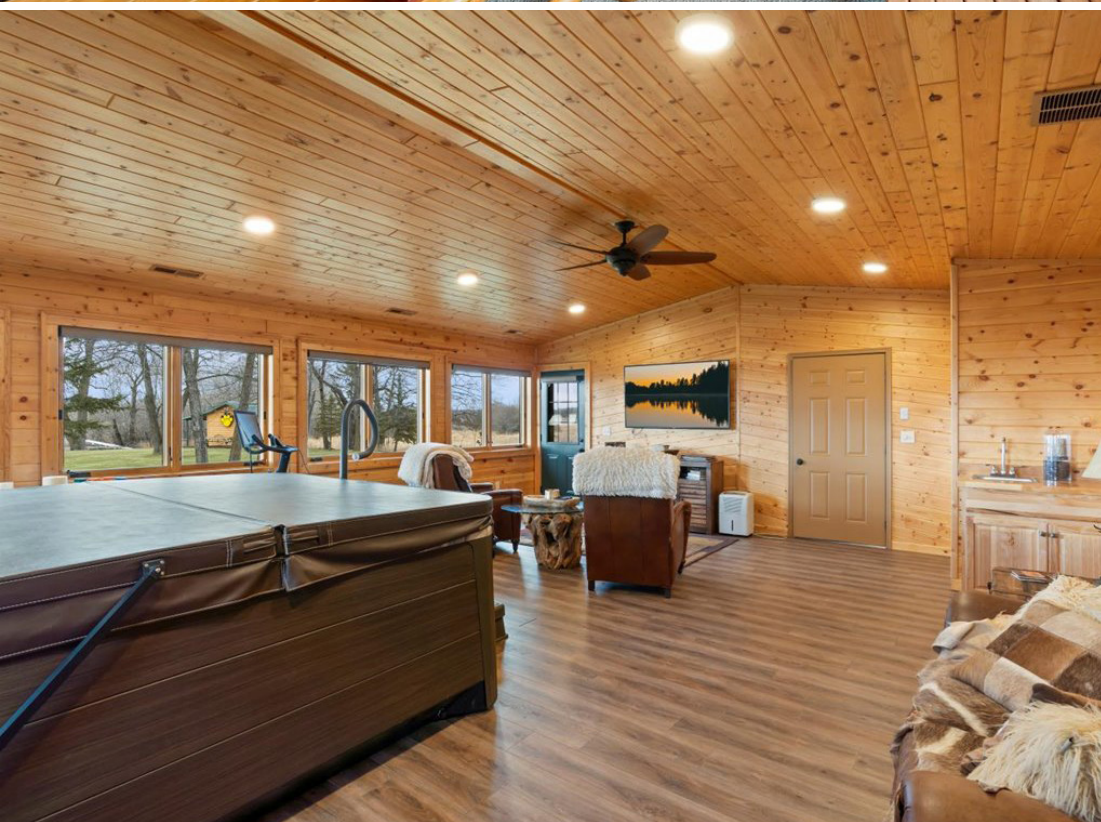


# Floor Plan











21998 LaSalle Ave NW  
Puposky, MN 56667



Blackduck EFC  
A HOME FOR YOU™

FedEx DOLLAR GENERAL

DEERWOOD BANK Walmart

Shell Simonson STATION STORES

AMERICAN NATIONAL BANK

SEVEN BREW TARGET

FIRST NATIONAL BANK BEMIDJI LUEKEN'S

ALDI McDonald's STARBUCKS BEMIDJI FUSION

Wild Hair

National Bank of Commerce

209

Roscoe's BAKERY CAFE

NTC Northwest Technical College

LUEKEN'S

BELTRAMI

West Fraser

Real Life

BEMIDJI

SANFORD HEALTH

BEMIDJI

**POPULATION**

City Population: 15,500–15,700  
Median Age: 29.8 Years

**HOUSEHOLDS**

Total Households: 6,400–6,500  
Average Household Size: 2.2 Persons

**HOUSEHOLD INCOME**

Median HI: \$53,850  
Per Capita Income: ~\$30,000

**5-MILE RADIUS**

Population: 20,353  
Households: 8,406  
Median HI: \$61,222



## CONTACT US

### SHEILA JOHNSON

CEO + Broker

(218) 556-9361

[sheila@sjcommercialadvisors.com](mailto:sheila@sjcommercialadvisors.com)

[sjcommercialadvisors.com](http://sjcommercialadvisors.com)



---

This offering memorandum was prepared by SJ Commercial Advisors. The information contained in this communication is selective and limited in nature. Although information has been obtained from sources deemed reliable, neither the property owner SJ Commercial Advisors makes any guarantees, warranties or representations as to the completeness or accuracy of the information contained herein. This offering memorandum is submitted subject to errors, omissions, and changes in information and to modification or withdrawal.