

# TONKA BUSINESS CENTER

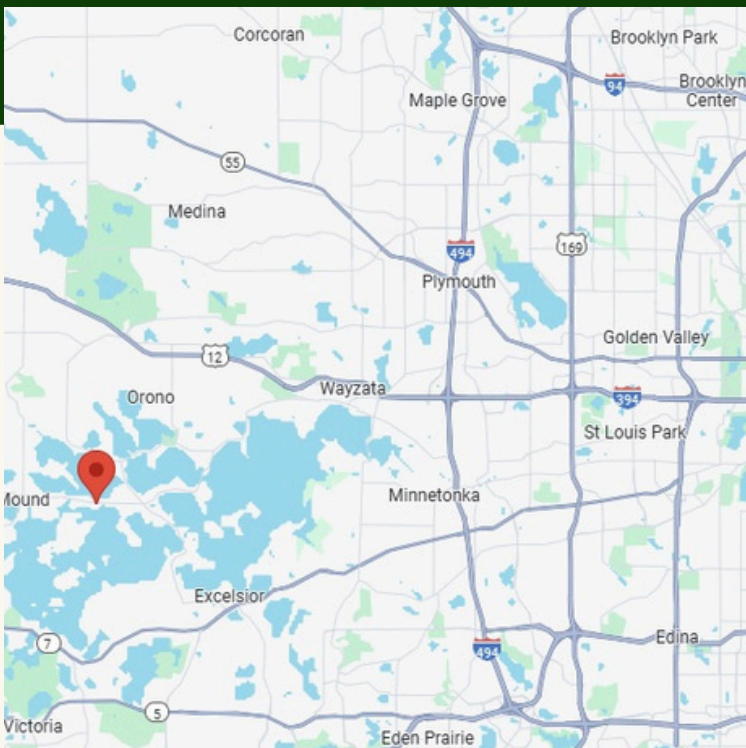
| 4154 Shoreline Dr, Spring Park MN 55384 |

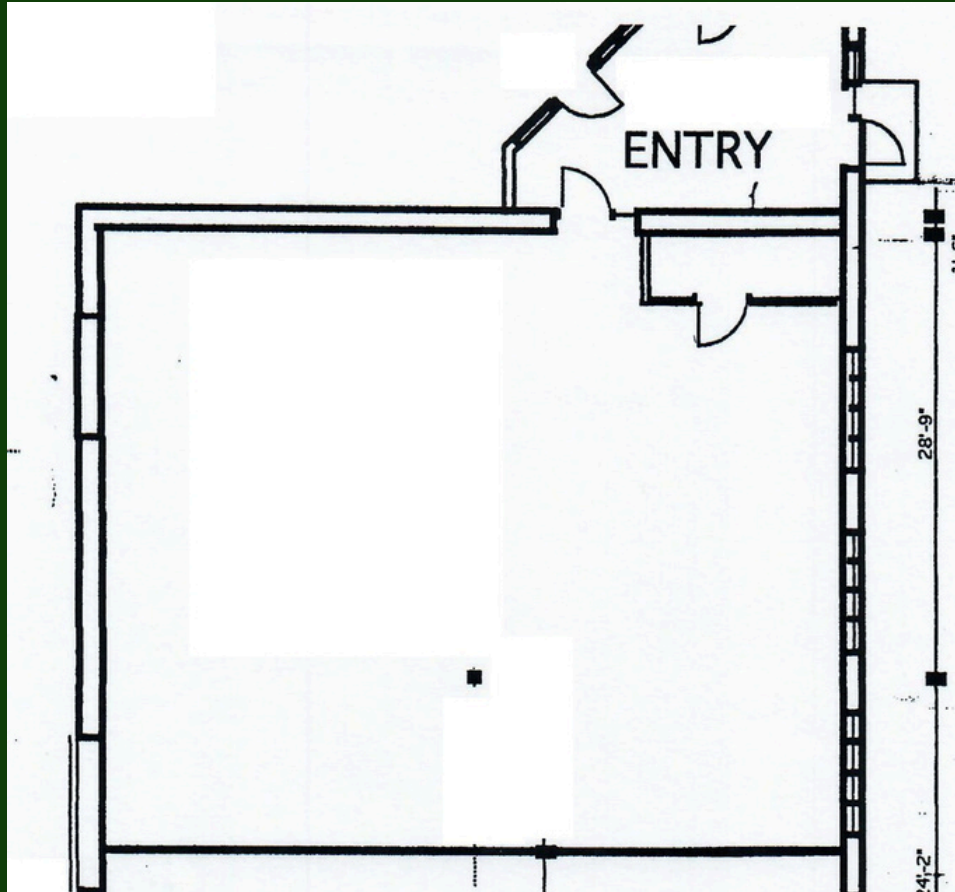
*Outstanding Leasing Value*

**PRICING**  
Negotiable Rates

## Property Features

- Available SF: 2,238 SF
- Exterior Building Signage Available
- Professional, Corporate Image
- Abundant Parking Available
- \$6.37 psf CAM and Tax (2026)
- Located in Spring Park





## Property Features

- First floor office space with east facing glass line
- Open floor plan, Landlord willing to buildout for Term Lease
- 15 minutes from the 394-494 Interchange
- Local, hands-on ownership and property management
- Building is located at the heart of Lake Minnetonka

[www.cornerstone-mn.com](http://www.cornerstone-mn.com)

Jack Bутtenhoff | (612) - 723 - 5408  
jack@cornerstone-mn.com

Luke Bутtenhoff | (612) - 723 - 2537  
luke@cornerstone-mn.com