

50,000 SF SPECULATIVE FACILITY

Corinth Spec Building • 2201 S. Fulton Dr. • Corinth, Mississippi 38834

FOR LEASE OR SALE



For More Information Contact:

Clayton McKinnon - Regional Dev. Director

P.O. Box 660864
Birmingham, AL 35266
cmckinnon@agrancel.com
Cell: 205.447.0784
www.agrancel.com

Clayton Stanley - President/COO

The Alliance
502 Wick St.
Corinth, MS 38834
Cell: 662.287.5269
www.corinthalliance.com

www.agrancel.com

property highlights

Building

Building Size	50,000 sf expandable to 300,000 sf Pad ready for 100,000 sf
Bays	100' x 250'
Lot Size	25 acres
Parking	To suit tenant
Ceiling Height	30' clear height
Floors	6" stone base for future concrete slab
Columns	Center row of columns at 50' center
Lights	To suit tenant
Roofing	Standing seam
Walls	Pre-engineered metal



Truck Court

Docks	9 potential dock positions
Drive-In Door	1

Utilities

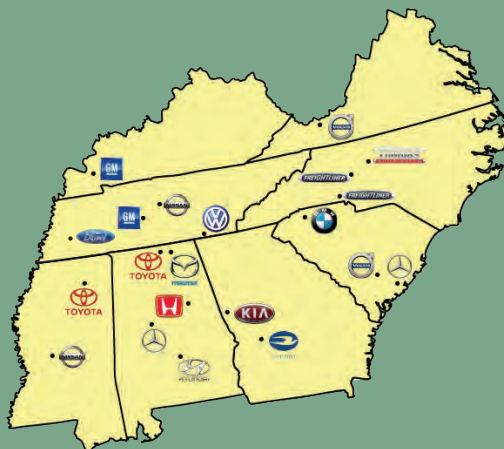
Gas	Corinth Gas & Water
Power	Alcorn County Electric Power Association
Water	Corinth Gas & Water
Sewer	Corinth Sewer Department
Dta/Fiber	ACE Fiber

Transportation Accessibility

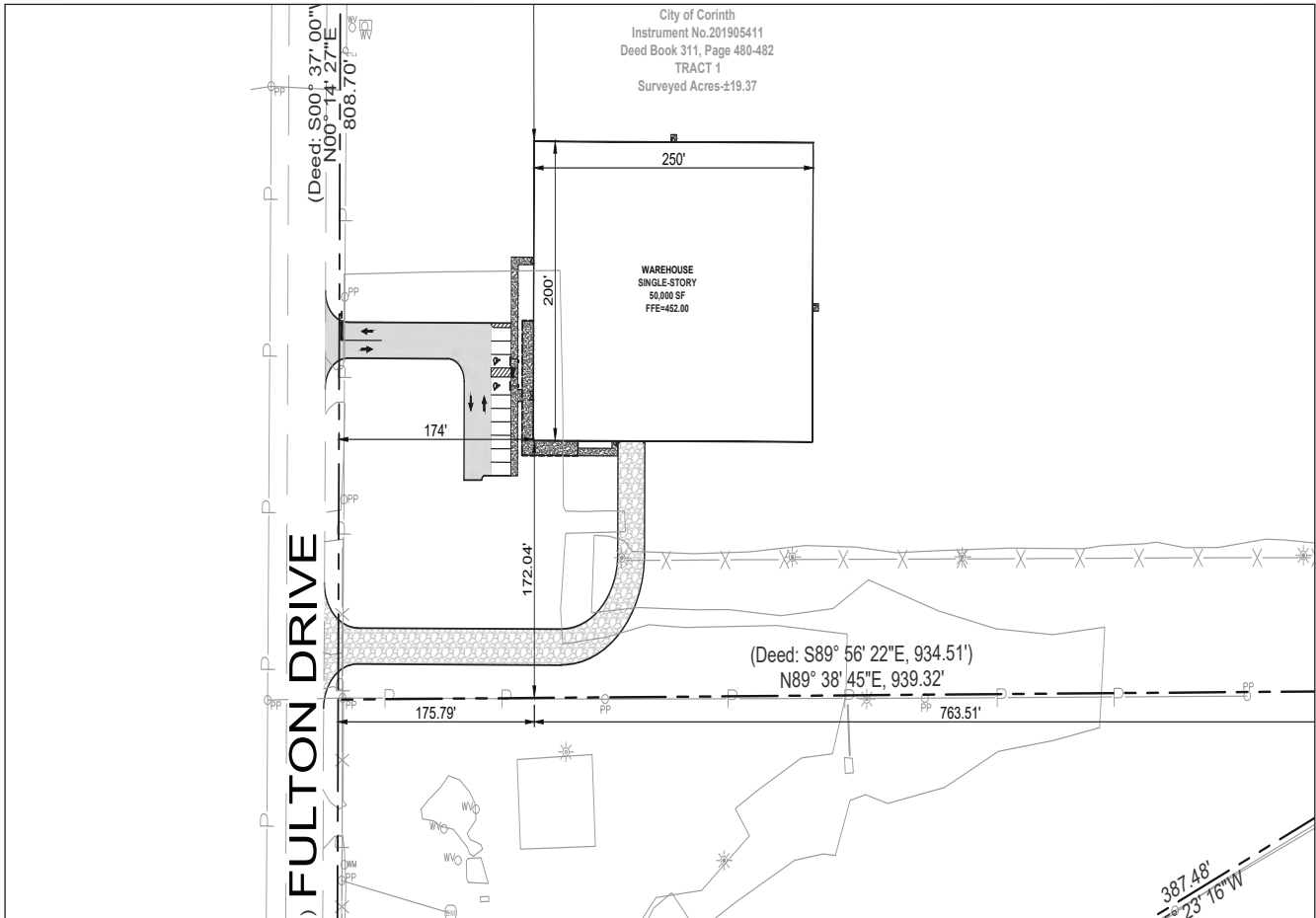
Interstates	I-22 (47 miles)
Access Hwy	U.S. Highway 74 U.S. Highway 45
Rail	Kansas City Southern Railway

the advantage

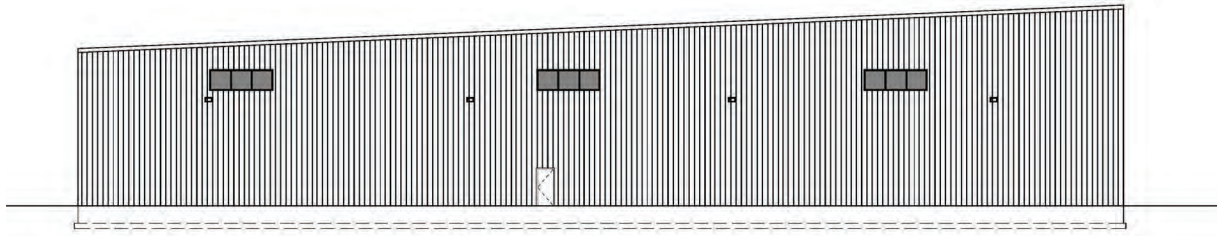
- Speed to market with this expandable spec building.
- Alcorn Works program ensures a skilled, trained workforce.
- Population of 333,740 with 45 minutes.
- Situated in heart of southern automotive corridor.
- Direct service from Kansas City Southern Railway.
- 75 miles from the Tennessee Megasite that will be home to Blue Oval City.



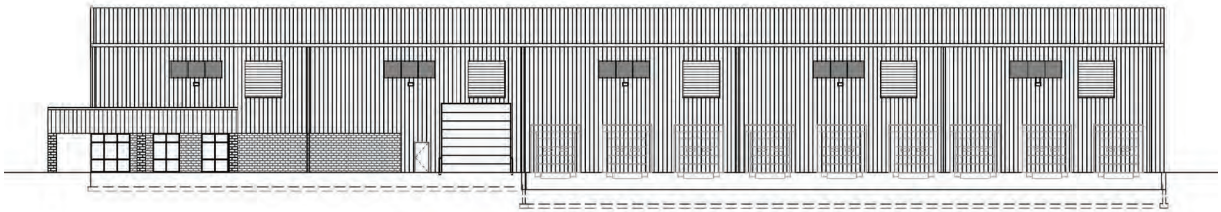
site plans



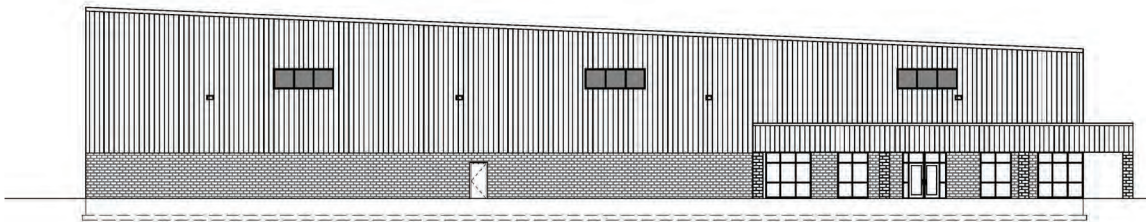
proposed elevations



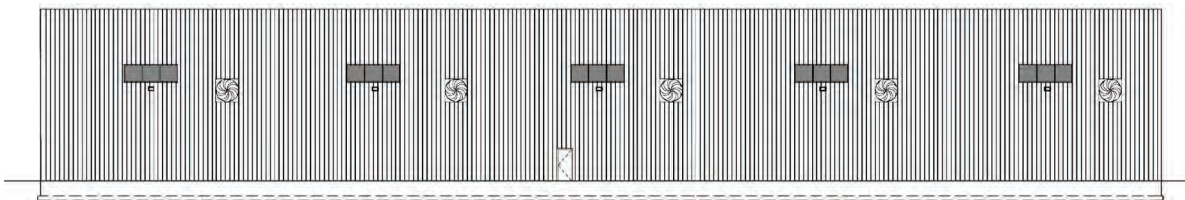
ELEVATION - EXTERIOR - EAST



ELEVATION - EXTERIOR - SOUTH



ELEVATION - EXTERIOR - WEST



ELEVATION - EXTERIOR - NORTH

50,000 SF SPECULATIVE FACILITY

Corinth Spec Building • 2201 S. Fulton Dr. • Corinth, Mississippi 38834

FOR LEASE OR SALE



For More Information Contact:

Clayton McKinnon - Regional Dev. Director

P.O. Box 660864
Birmingham, AL 35266
cmckinnon@agracel.com
Cell: 205.447.0784
www.agracel.com

Clayton Stanley - President/COO

The Alliance
502 Wick St.
Corinth, MS 38834
Cell: 662.287.5269
www.corinthalliance.com