



Colliers



Office For Lease

**Contact:**

**Wyatt McRaney**

Associate  
+1 801-318-5247  
wyatt.mcraney@colliers.com

**Justin Irvine**

Vice President  
+1 801 400 4260  
justin.irvine@colliers.com

**James Yeates**

Vice President  
+1 801 995 0049  
james.yeates@colliers.com

**Colliers**

2100 Pleasant Grove Blvd., Suite 200  
Pleasant Grove, UT 84062  
Main: +1 801 947 8300  
colliers.com

# Safford Office Building

315 East 1200 South | Orem, UT

## Property Information

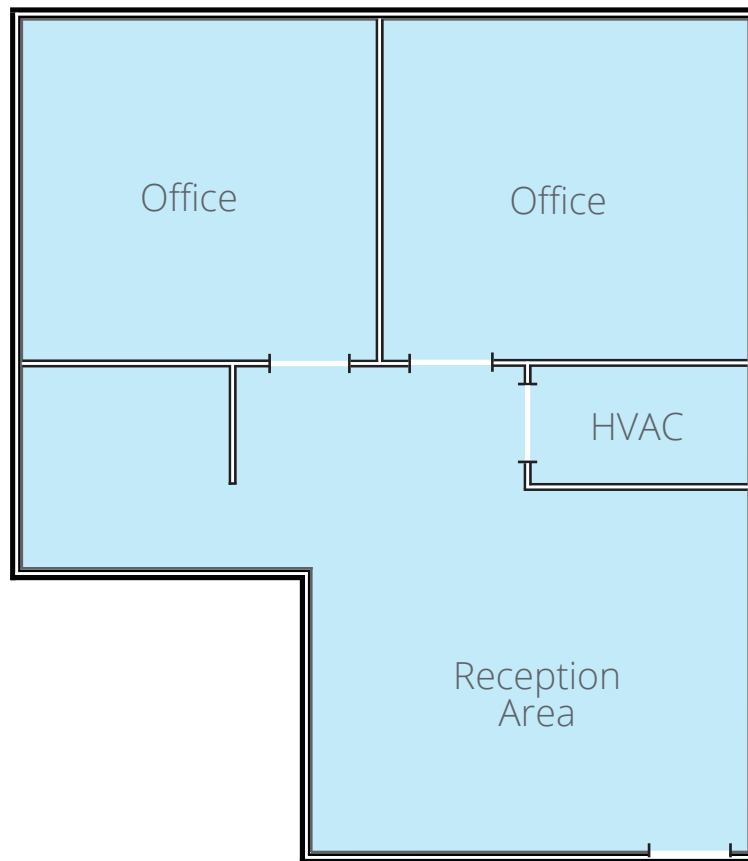
- Mail Level, Suite 102: 650 SF Available
- 2 Offices
- Reception area with cubby for printers
- Excellent central Utah Valley location
- **Lease Rate: \$900 / Month MG**

Accelerating success.

# Floor Plan

## Main Floor

■ Suite 102 - 650 SF



# Aerial Map



## Colliers

2100 Pleasant Grove Blvd., Suite 200  
Pleasant Grove, UT 84062  
Main: +1 801 947 8300  
colliers.com

## Wyatt McRaney

Associate  
+1 801-318-5247  
wyatt.mcraney@colliers.com

## Justin Irvine

Vice President  
+1 801 400 4260  
justin.irvine@colliers.com

## James Yeates

Vice President  
+1 801 995 0049  
james.yeates@colliers.com

This document has been prepared by Colliers International for advertising and general information only. Colliers International makes no guarantees, representations or warranties of any kind, expressed or implied, regarding the information including, but not limited to, warranties of content, accuracy and reliability. Any interested party should undertake their own inquiries as to the accuracy of the information. Colliers International excludes unequivocally all inferred or implied terms, conditions and warranties arising out of this document and excludes all liability for loss and damages arising there from. This publication is the copyrighted property of Colliers International and/or its licensor(s). ©2025. All rights reserved.