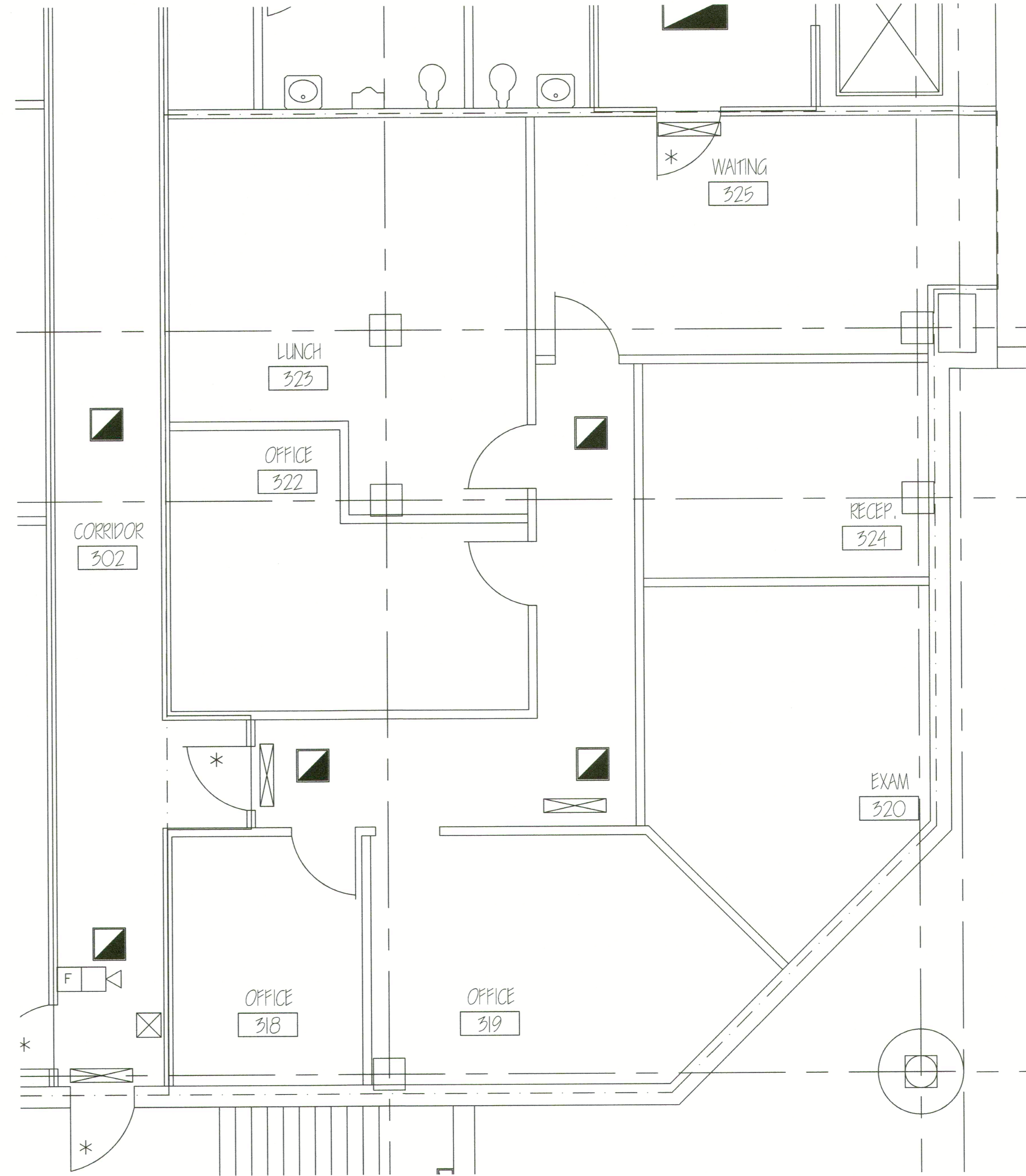
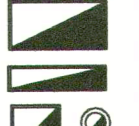










THIRD FLOOR PLAN  
SCALE: 1/8"=1'-0"



1 ENLARGED FLOOR PLAN  
SCALE: 1/4"=1'-0"

LEGEND

-  INDICATES LIGHTING FIXTURES ON EMERGENCY CIRCUIT
-  SMOKE DETECTORS
-  FIRE PULL STATIONS
-  FIRE HORN STROBE UNITS
-  ILLUMINATED EXIT SIGN
-  INDICATES 1 HR. RATED WALLS, FROM SLAB TO UNDERSIDE OF DECK, w/ FIRE-STOPPING - UL-465  
(2 HR. RATED SHAFT WALLS AROUND ELEVATORS & DUCT SHAFTS UL-438)
-  INDICATES "C" LABEL SOLID CORE DOORS IN RATED WALLS  
(NOTE: ALL DOORS IN STAIR TOWERS: "B" LABEL METAL DOORS.)
-  10 LB. CAP. MODEL SENTINEL 10 UO-UL RATING 10BC. USE MB-864 TYPE FIRE EXTINGUISHER WALL BRACKETS
-  10 LB. CAP. MODEL COSMIC 10E-UL RATING 4A-60 BC. USE CABINET "ACADAMY" SERIES IN REQ'D. SIZE FOR SPECIFIED FIRE EXTINGUISHER

JOSEPH J. BALOBECK  
AND ASSOCIATES  
200 DINSMORE AVENUE  
PITTSBURGH, PENNSYLVANIA  
412-928-0210

drawn by  
M.J. BARRÉ

checked by

date  
SEPT. 2005

scale  
as noted

KENNEDY MEDICAL  
ARTS BUILDING

JOSEPH J. BALOBECK, JR.  
REGISTERED ARCHITECT  
200 DINSMORE AVE.  
PITTSBURGH, PA 15205

job no.