

Montage Mt. Rd
Cognate parcel



LACKAWANNA COUNTY
MULTI-PURPOSE STADIUM

PARCEL 19D
HEMINGWAY DEVELOPMENT
LIMITED PARTNERSHIP

PARCEL 20

PARCEL 17A

PARCEL 16
SLIBCO

REFERENCE: SUBDIVISION PLAN OF GLENMAURA
CORPORATE CENTER BY QUAD THREE GROUP.

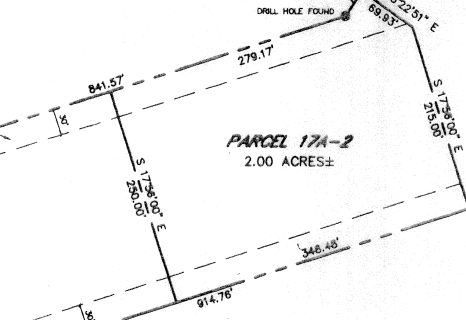
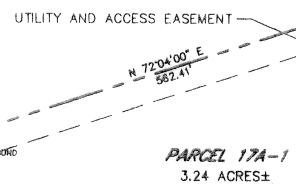
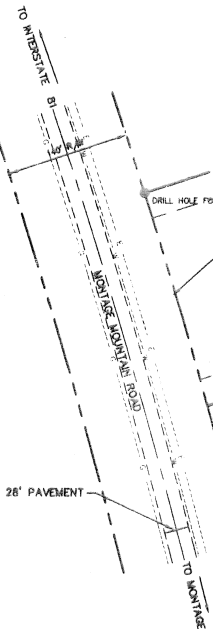
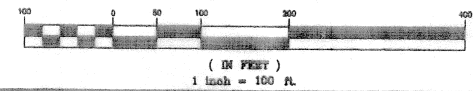
SURVEYORS CERTIFICATION

I, PATRICK J. McLAIN, P.L.S., HEREBY CERTIFY THAT I HAVE RECREATED A PORTION OF THE OUTERMOST BOUNDARY OF LANDS CURRENTLY OWNED BY THE HEMINGWAY DEVELOPMENT LIMITED PARTNERSHIP, IN ACCORDANCE WITH THE MINIMUM STANDARDS FOR BOUNDARY SURVEYS SECTION OF THE MANUAL OF PRACTICE FOR PROFESSIONAL LAND SURVEYORS IN THE COMMONWEALTH OF PENNSYLVANIA, AS ADOPTED BY THE PENNSYLVANIA SOCIETY OF LAND SURVEYORS ON JULY 26, 1985.

Patrick J. McLain
PATRICK J. McLAIN, P.L.S.

19126 - E
REGISTRATION NUMBER

GRAPHIC SCALE



PARCEL 17B
HEMINGWAY DEVELOPMENT
LIMITED PARTNERSHIP



Patrick J. McLain

MOOSIC BOROUGH
FINAL SUBDIVISION APPROVAL
MOOSIC PLANNING COMMISSION
CHAIRMAN: _____ DATE: _____
SECRETARY: _____ DATE: _____

HEMINGWAY DEVELOPMENT LIMITED PARTNERSHIP PARCEL 17 MAJOR SUBDIVISION		MOOSIC BOROUGH - LACKAWANNA COUNTY, PA	
RE-SUBDIVISION PARCEL 17A-1 & PARCEL 17A-2		DRAWN BY JVS JOB NO. 941211 DWG. NO. C-1	
Acker Associates Inc. Consulting Engineers P.O. Box 899 - Moscor, PA. - 18444		CHECKED BY DATE 12/21/04	
SYMBOL DATE REVISIONS BY		APPROVED BY P.J.M SCALE 1"=100'	