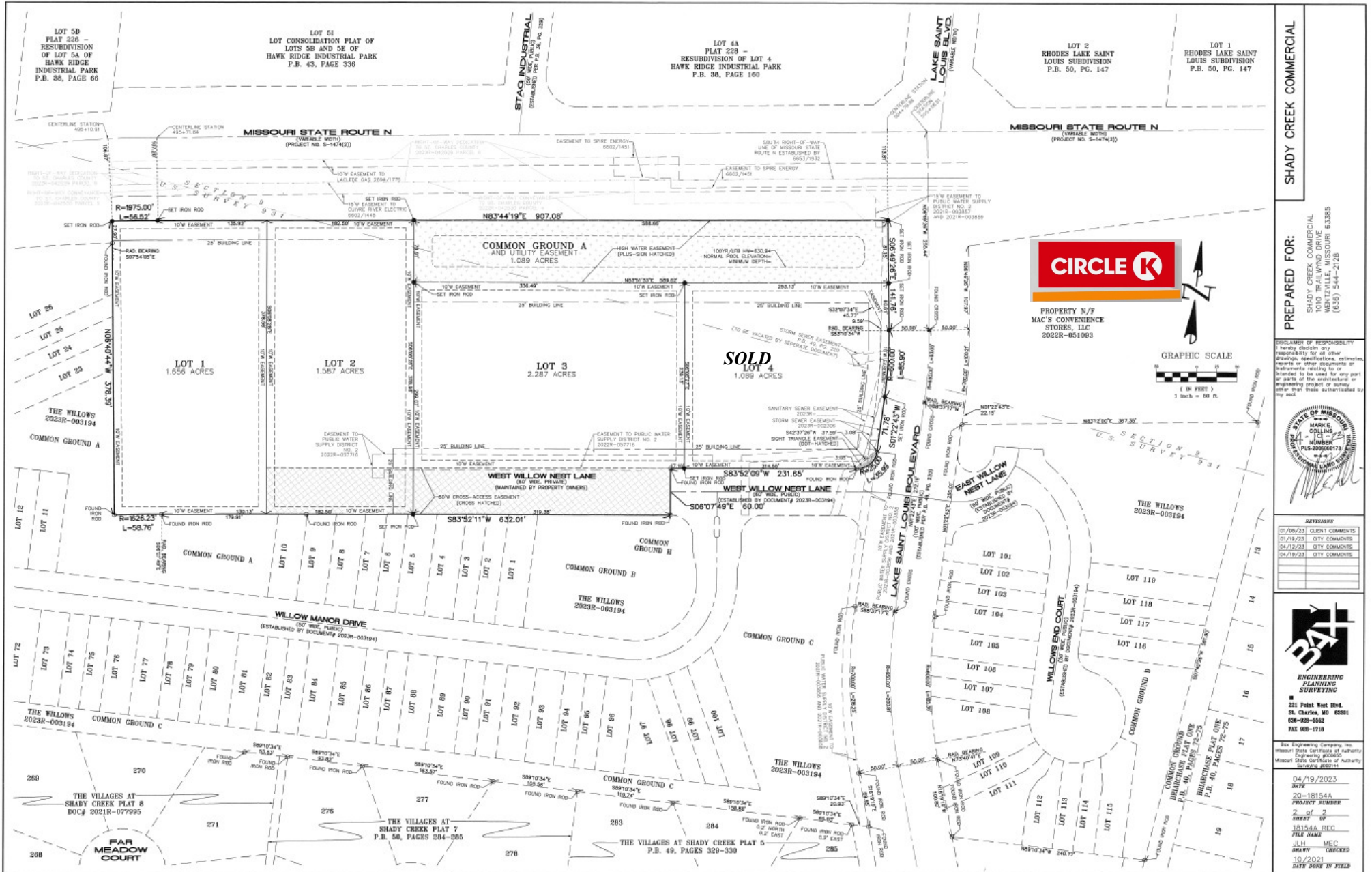


RECORDED PLAT



SHADY CREEK COMMERCIAL

PREPARED FOR:

SHADY CREEK COMMERCIAL
1010 TRAILING DRIVE
MARIETTA, MISSOURI
(833) 544-2128

STATE OF MISSOURI
MARK E. ICHOLS
PLS-200664173
REGISTERED PROFESSIONAL ENGINEER



REVISIONS



ENGINEERING PLANNING SURVEYING INC.
221 First Natl Bldg.
St. Charles, MO 63081
636-233-5502
FAX 636-233-1718

Box Engineering Company, Inc.
Without State Certification of Authority
Engineering Approval
Missouri State Certification of Authority

DATE: 04/19/2023
PROJECT NUMBER: 20-18154A
SHEET NO: 2 of 2
DRAWN BY: JLM
FILE NAME: 18154A_REC
JOB NO: 041414
DATE PLOTTED: 10/20/21
DRAWN BY: JLM