



# OFFICE SPACE OPPORTUNITY ON COLLEGE BLVD CORRIDOR

- Leases starting at \$20.00 psf
- Located at 8005 West 110th Street in Overland Park, KS.
- 1,876 to 4,215 Rentable sq. ft.
- Excellent location with outstanding access and visibility.
- Building signage available.
- Abundant parking.
- Recently remodeled common areas.
- High-speed internet access.
- Near shopping, restaurants, banks, and hotels.

## **Offered By:**

The Tiehen Group, Inc.  
1111 W. 39th Street, Suite 100  
Kansas City, MO 64111  
(913) 648-1188  
[www.tiehengroup.com](http://www.tiehengroup.com)

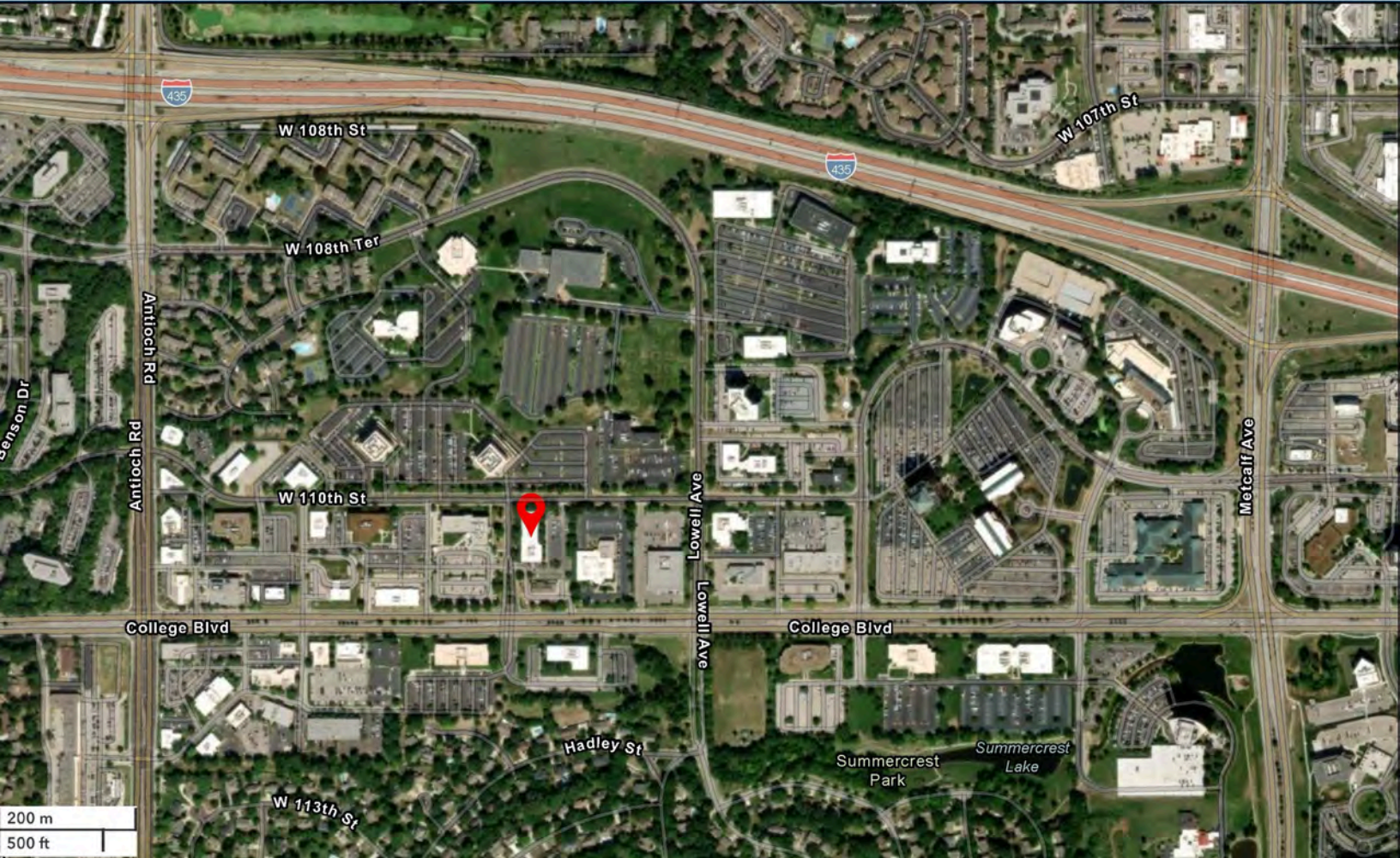
## **Contact:**

**Max Vickers**  
[maxvickers@tiehengroup.com](mailto:maxvickers@tiehengroup.com)  
816-419-6635

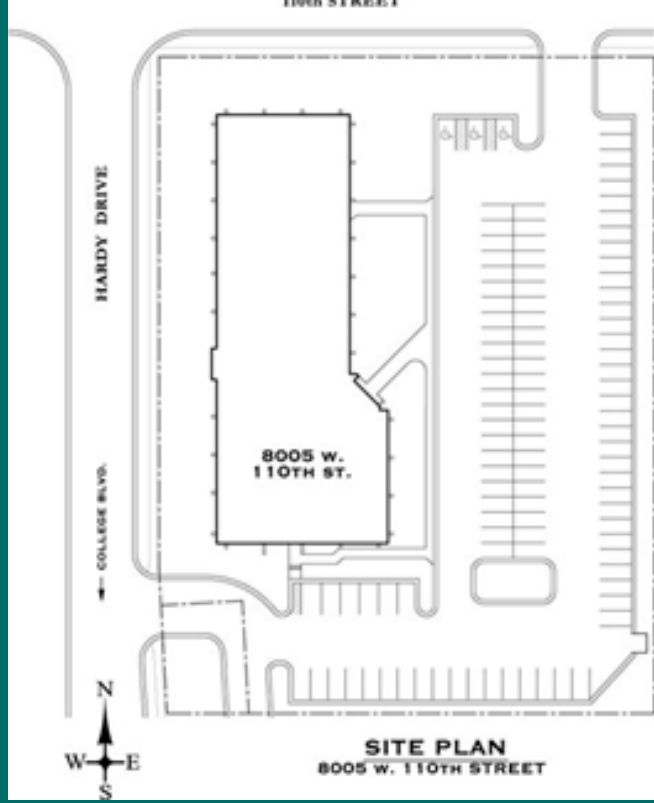
**Jim Tiehen**  
[jim@tiehengroup.com](mailto:jim@tiehengroup.com)  
(913) 648-1188

# FOR LEASE

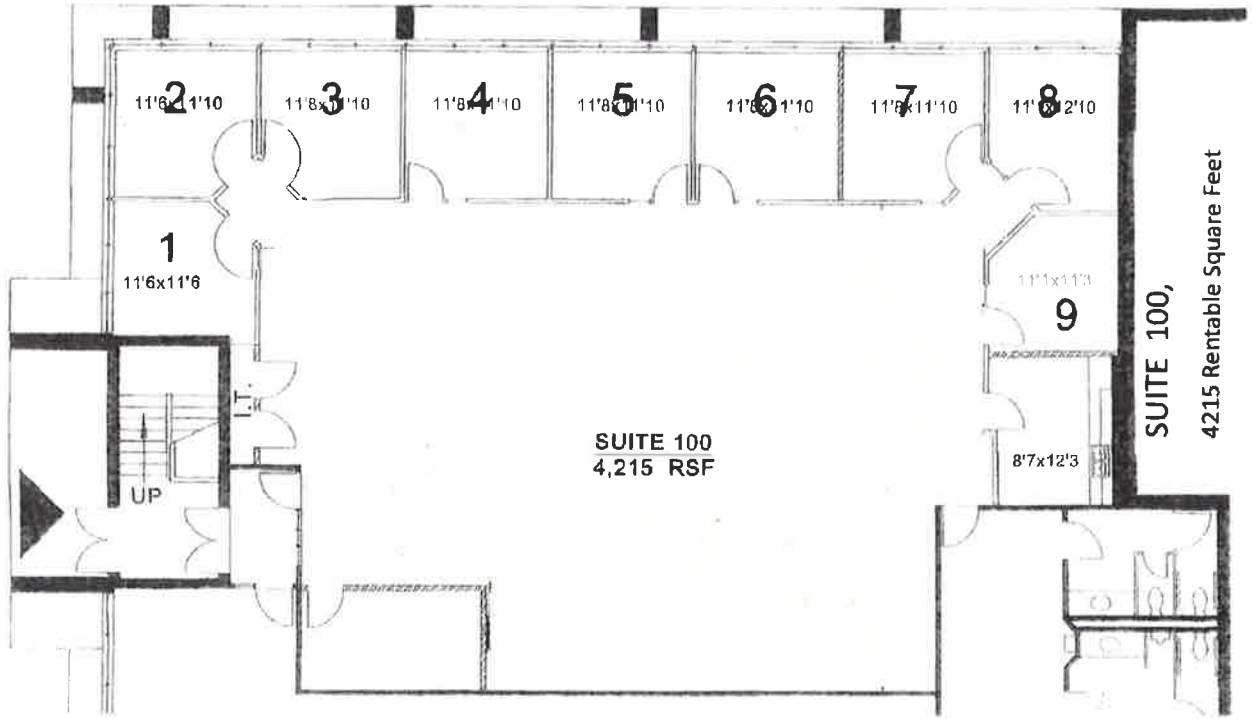
8005 W. 110th Street  
Overland Park, Kansas



8005 W. 110th Street is an extremely well maintained all brick structure sitting on the corner of 110th Street and Hardy Drive, immediately north along the prestigious College Boulevard corridor. The property has been recently remodeled and updated. It is an excellent leasing opportunity in the heart of one of Johnson County's most prestigious business locations.

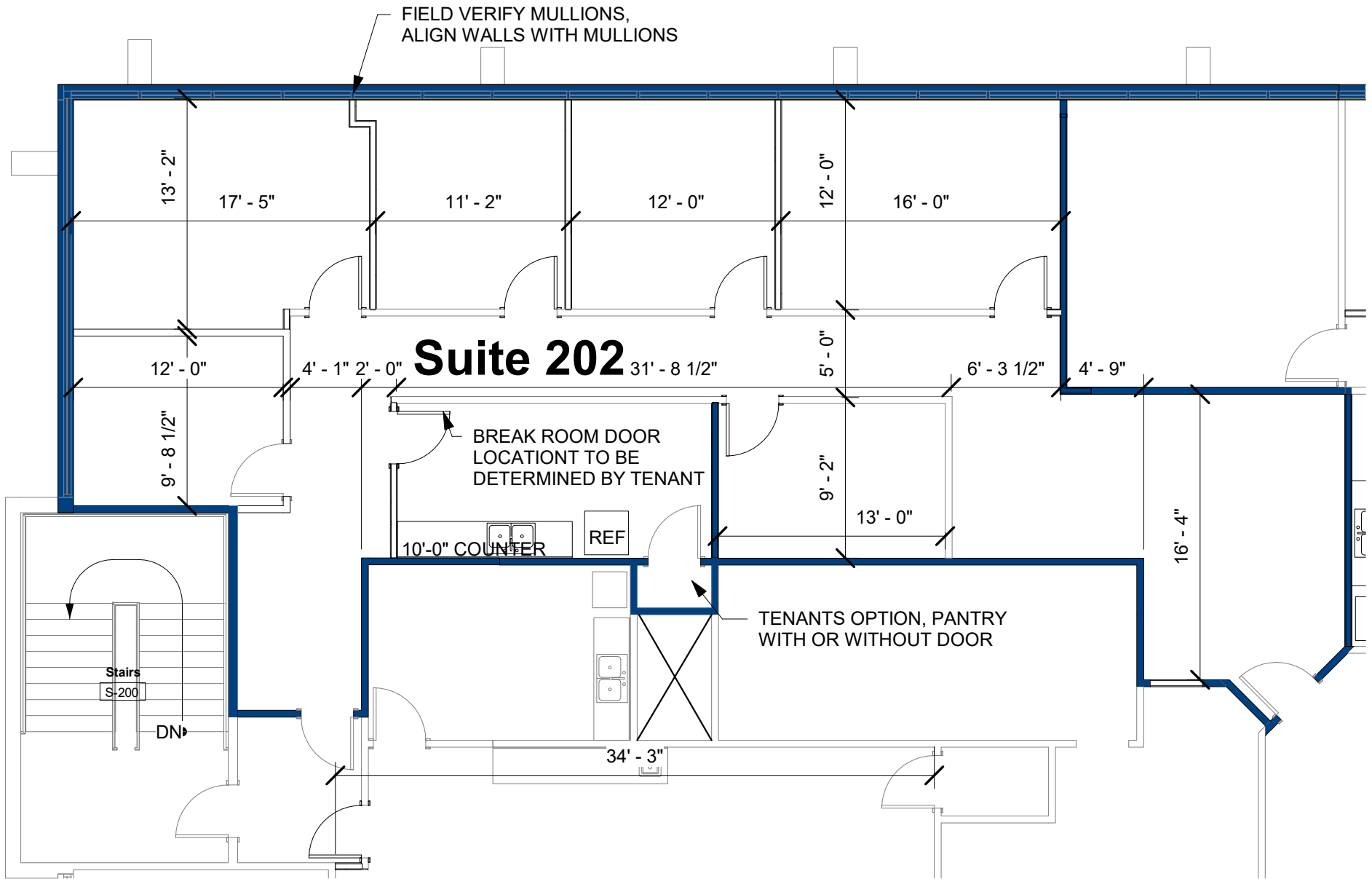


**ENTRY**



**SUITE 100**  
4,215 RSF

**SUITE 100,**  
4215 Rentable Square Feet



## Suite 202

1,876 RENTABLE SQFT

1,772 USEABLE SQFT

1

First Floor Plan\_Suite 202

G1.04

1/8" = 1'-0"

# Tenant Improvements