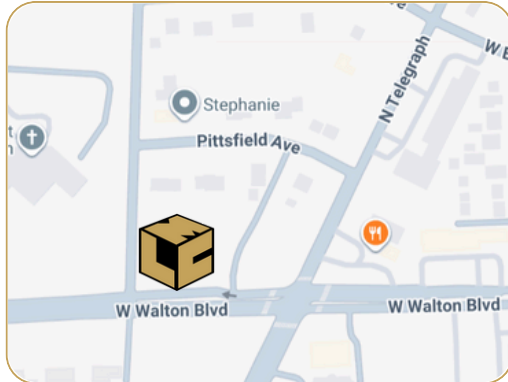


392 West Walton Blvd

Pontiac, MI

- 0.6 Acres
- Residential - R1
- Water/Sewer/Gas Available

0.6 ACRES FOR SALE



FOR MORE INFORMATION:

Garry Rogers
Senior Vice President
248.637.3527
grogers@LMCap.com

Jason Capitani, SIOR, CCIM
Managing Partner
248.637.7684
jcapitani@LMCap.com



L. MASON CAPITANI

CORFAC INTERNATIONAL

CELEBRATING 60 YEARS

248.637.9700 | LMCap.com

Information contained herein was obtained from sources deemed to be reliable but is not guaranteed. Subjects to prior sales, changes of price or withdrawal.

392 West Walton Blvd

Pontiac, MI

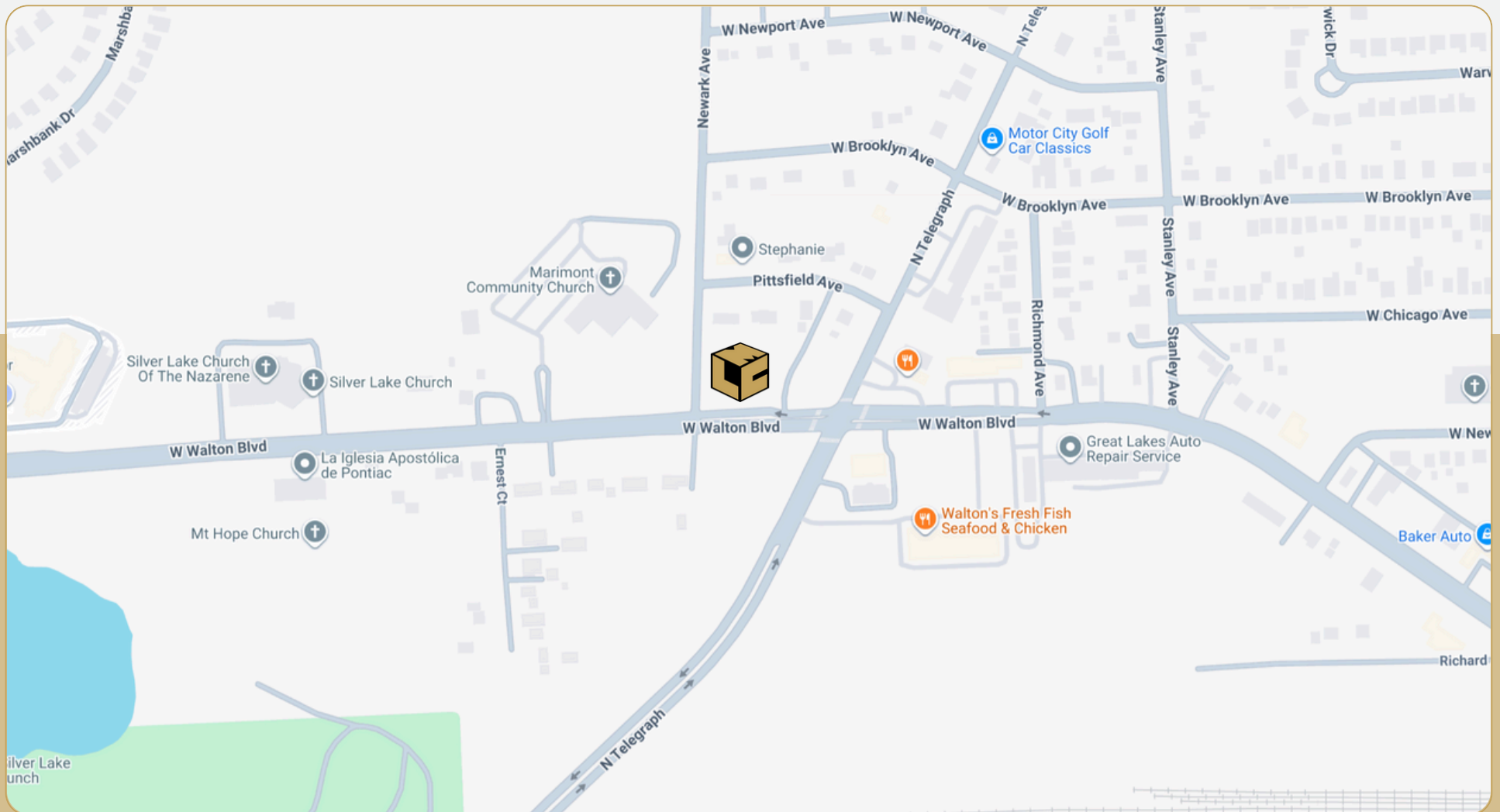


L. MASON CAPITANI

CORFAC INTERNATIONAL

CELEBRATING 60 YEARS

Location Map:



248.637.9700 | LMCap.com

Information contained herein was obtained from sources deemed to be reliable but is not guaranteed. Subjects to prior sales, changes of price or withdrawal.

392 West Walton Blvd

Pontiac, MI



L. MASON CAPITANI

CORFAC INTERNATIONAL

CELEBRATING 60 YEARS

Land Property Details:

Details:

Intersection: W Walton/Newark Ave

Parcel ID: 14-07-477-005

Zoning: R1

Type: -

Dimensions: Rectangular

Water: City

Utilities: Gas

Sanitary: Yes

Storm: Yes

Acres: 0.6

Total SF: 26,136

Available SF: 26,136

Frontage: 155'

Depth: 168'

Topography: -

Easements: -

Restrictions: -

Front Yard Setback: -

Side Yard Setback: -

Economic

Sale Price: \$89,000

Price/SF: -

Price/Acre \$148,333.33

Taxes: -

Master Planned Use: -

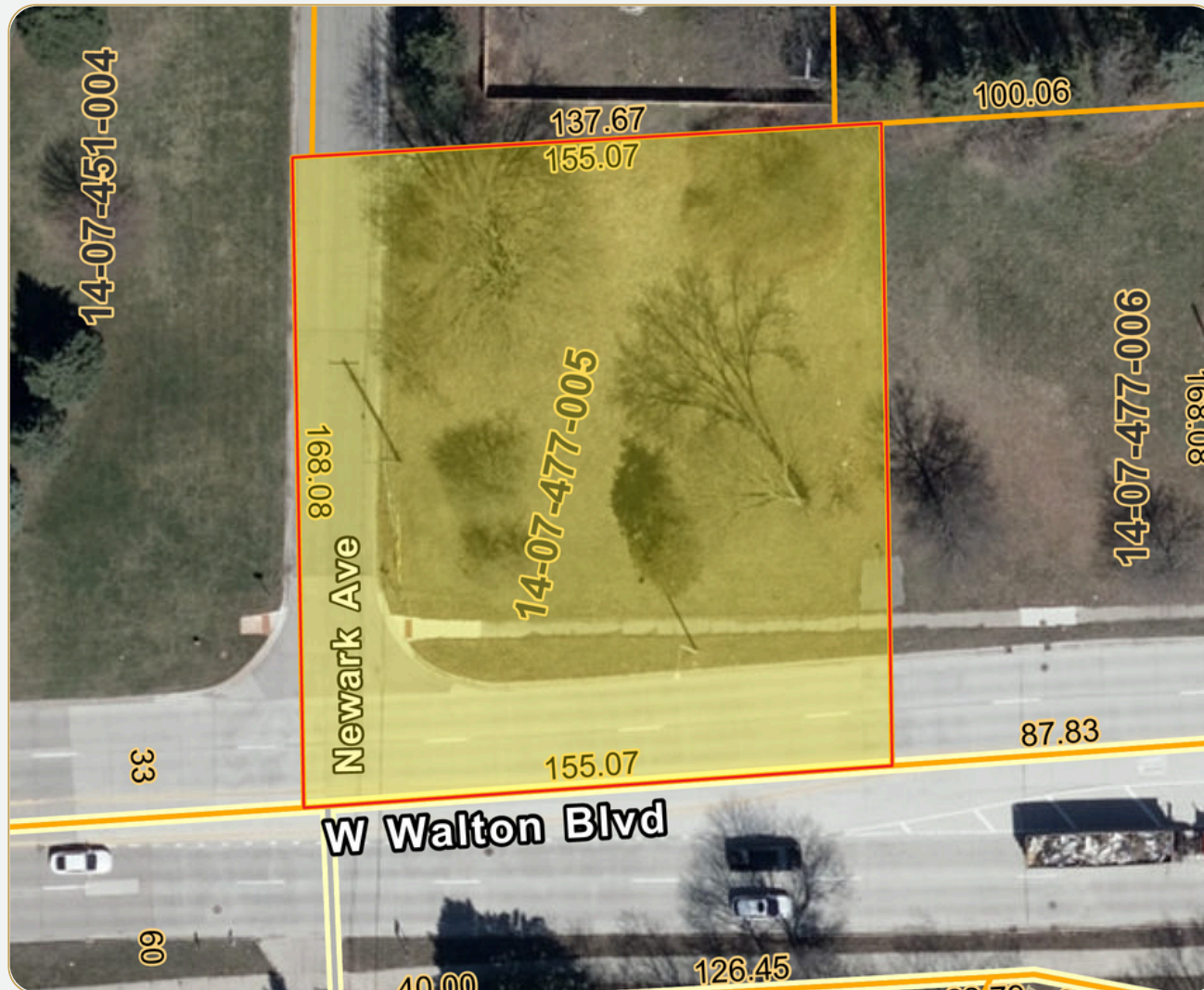
Additional Information: -

392 West Walton Blvd

Pontiac, MI



Additional Photos:



248.637.9700 | LMCap.com

Information contained herein was obtained from sources deemed to be reliable but is not guaranteed. Subjects to prior sales, changes of price or withdrawal.