

Oxford Companies  
734.665.6500  
oxfordcompanies.com



Integrated  
Real Estate  
Services



## Office Building For Lease

Concord Center

455 E. Eisenhower Pkwy, Suite 50

Ann Arbor, MI 48104

1,477 SF

\$23.50 SF/yr (MG)

Available 8/1/2026



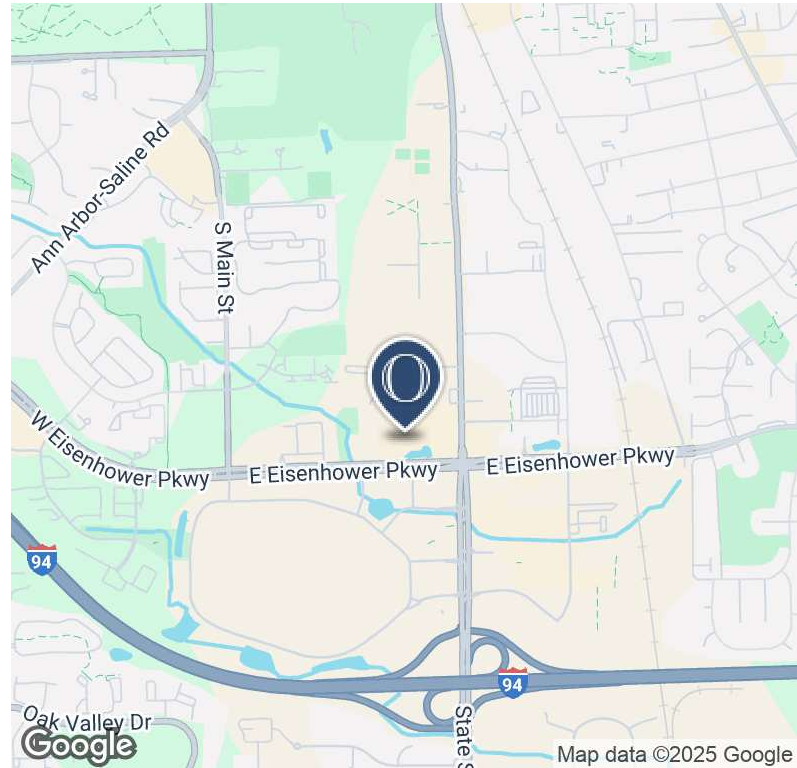
Contact Karen O'Neil for  
more information or to  
schedule a tour.

Office: 734.665.6500  
Cell: 734.323.4263  
koneil@oxfordcompanies.com

Concord Center  
455 E. Eisenhower Pkwy. Suite 50  
Ann Arbor, MI 48104



Integrated  
Real Estate  
Services



## OFFERING SUMMARY

Lease Rate:	\$23.50 SF/yr (MG)
Building Size:	48,020 SF
Available SF:	1,477 SF
Year Built:	1987
Parking Ratio:	5.8
Zoning:	PUD
Submarket:	South Side Ann Arbor

## PROPERTY OVERVIEW

Concord Center is a three-story, mixed-use building offering beautiful Ann Arbor office space in the center of Ann Arbor's bustling Southside. Its beautiful brick exterior and location on the corner of E. Eisenhower and S. State provides remarkable visibility, as well as fantastic views for employees and clients. Well-maintained walkways and a picturesque pond add to Concord's welcoming environment. Multiple amenities are also onsite including restaurants, shopping and a beauty salon.

## PROPERTY HIGHLIGHTS

- Recent common area renovations
- Located on the corner of S. State St. and E. Eisenhower Pkwy.
- Immediate access to I-94
- Across from Briarwood Mall & minutes from downtown & U-M
- Less than a mile away from multiple hotels and restaurants, including these within the building itself: Olive Garden, Mediterrano, Anna's House, and Cottage Inn
- Ample parking adjacent to building
- Streamlined leasing experience for convenience and ease
- Locally-owned and professionally managed



Contact Karen O'Neil for more information or to schedule a tour.

Office: 734.665.6500  
Cell: 734.323.4263  
koneil@oxfordcompanies.com

Concord Center  
455 E. Eisenhower Pkwy. Suite 50  
Ann Arbor, MI 48104



Integrated  
Real Estate  
Services



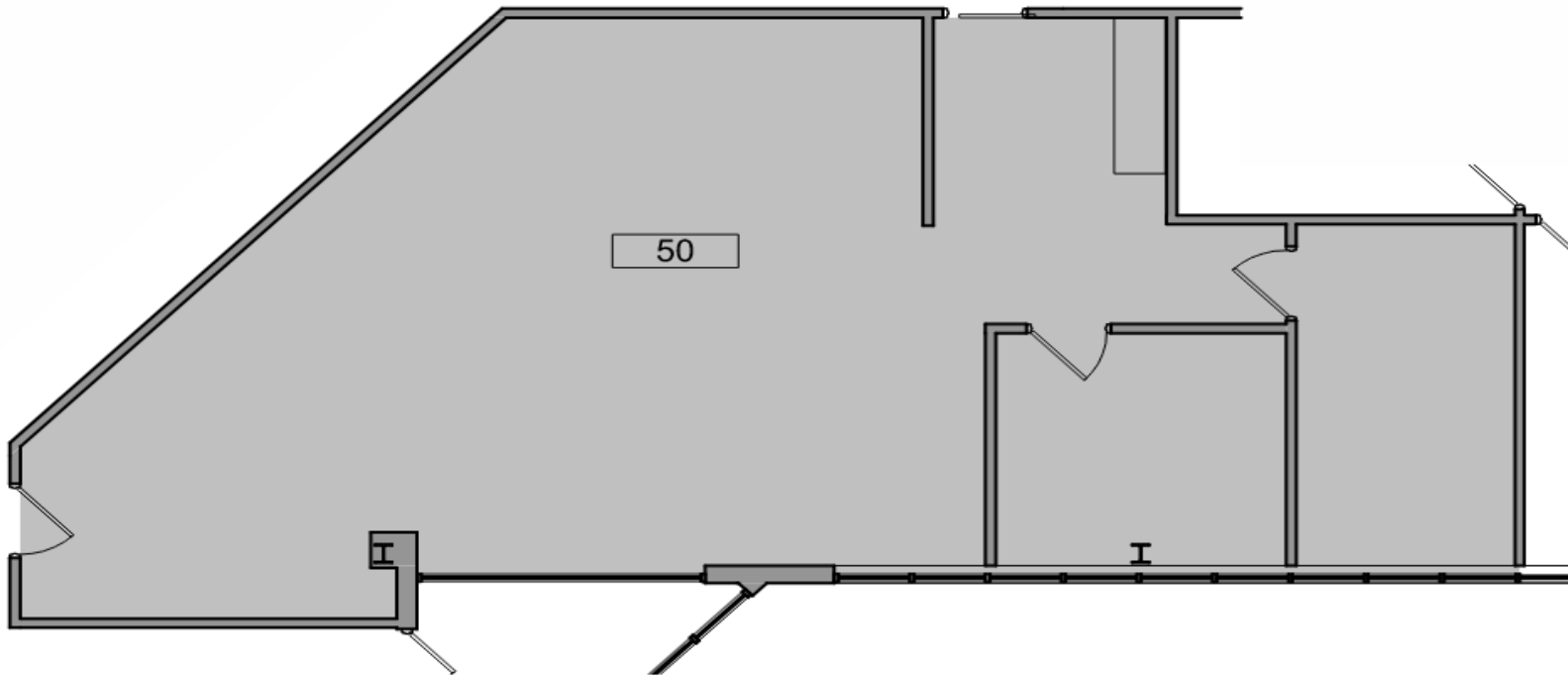
Contact Karen O'Neil for  
more information or to  
schedule a tour.

Office: 734.665.6500  
Cell: 734.323.4263  
[koneil@oxfordcompanies.com](mailto:koneil@oxfordcompanies.com)

Concord Center  
455 E. Eisenhower Pkwy. Suite 50  
Ann Arbor, MI 48104

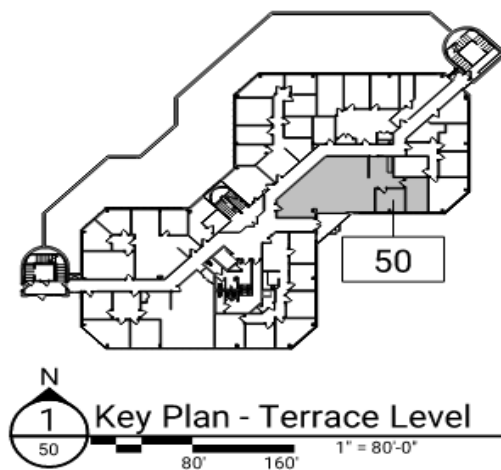


Integrated  
Real Estate  
Services



 N  
2  
50  
4' 8' 16' 1/8" = 1'-0"

Suite 50 - Partial Terrace Level Existing Floor Plan



 N  
1  
50  
80' 160' 1" = 80'-0"

Key Plan - Terrace Level



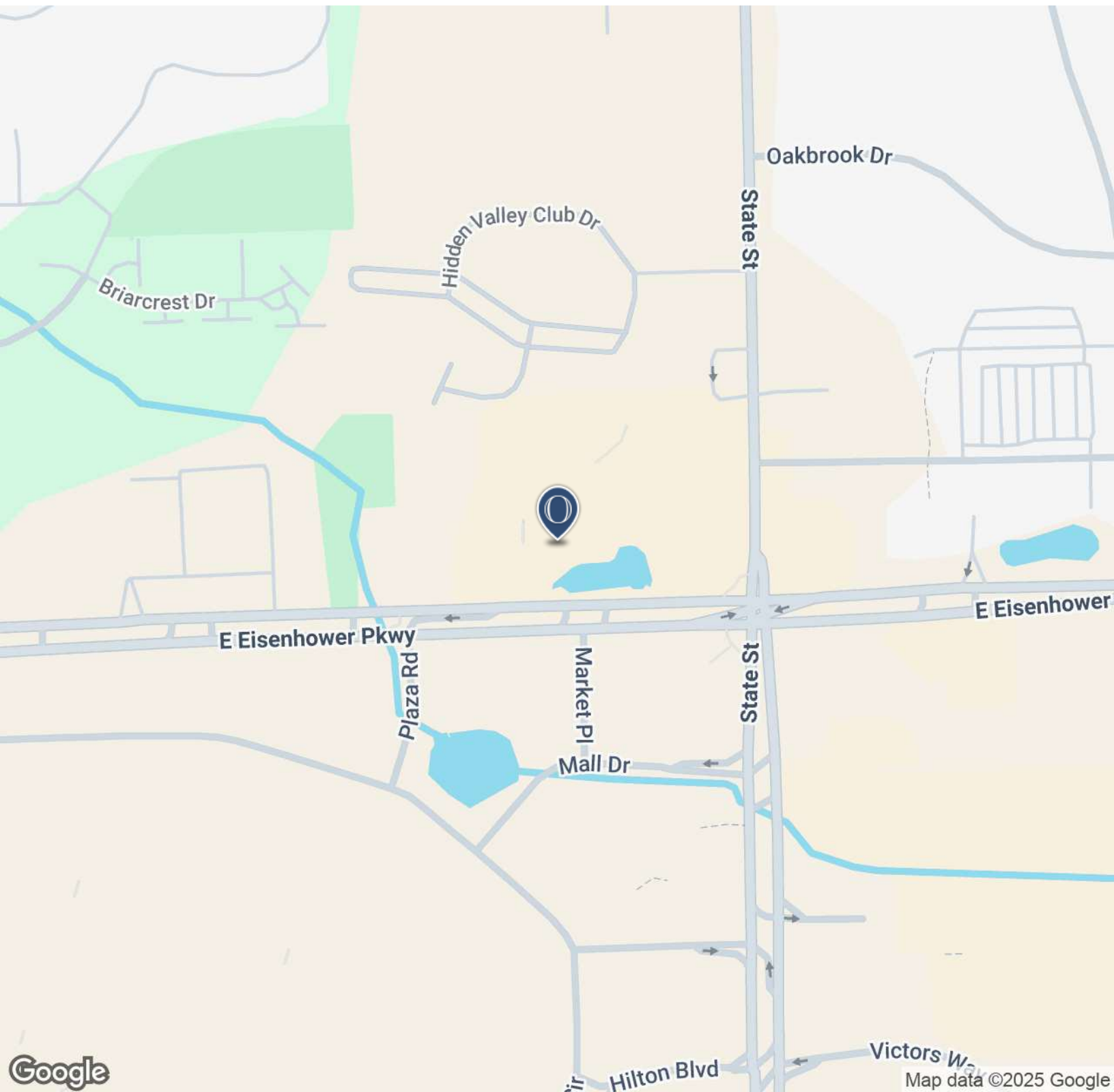
Contact Karen O'Neil for more information or to schedule a tour.

Office: 734.665.6500  
Cell: 734.323.4263  
koneil@oxfordcompanies.com

Concord Center  
455 E. Eisenhower Pkwy. Suite 50  
Ann Arbor, MI 48104



Integrated  
Real Estate  
Services



Contact Karen O'Neil for  
more information or to  
schedule a tour.

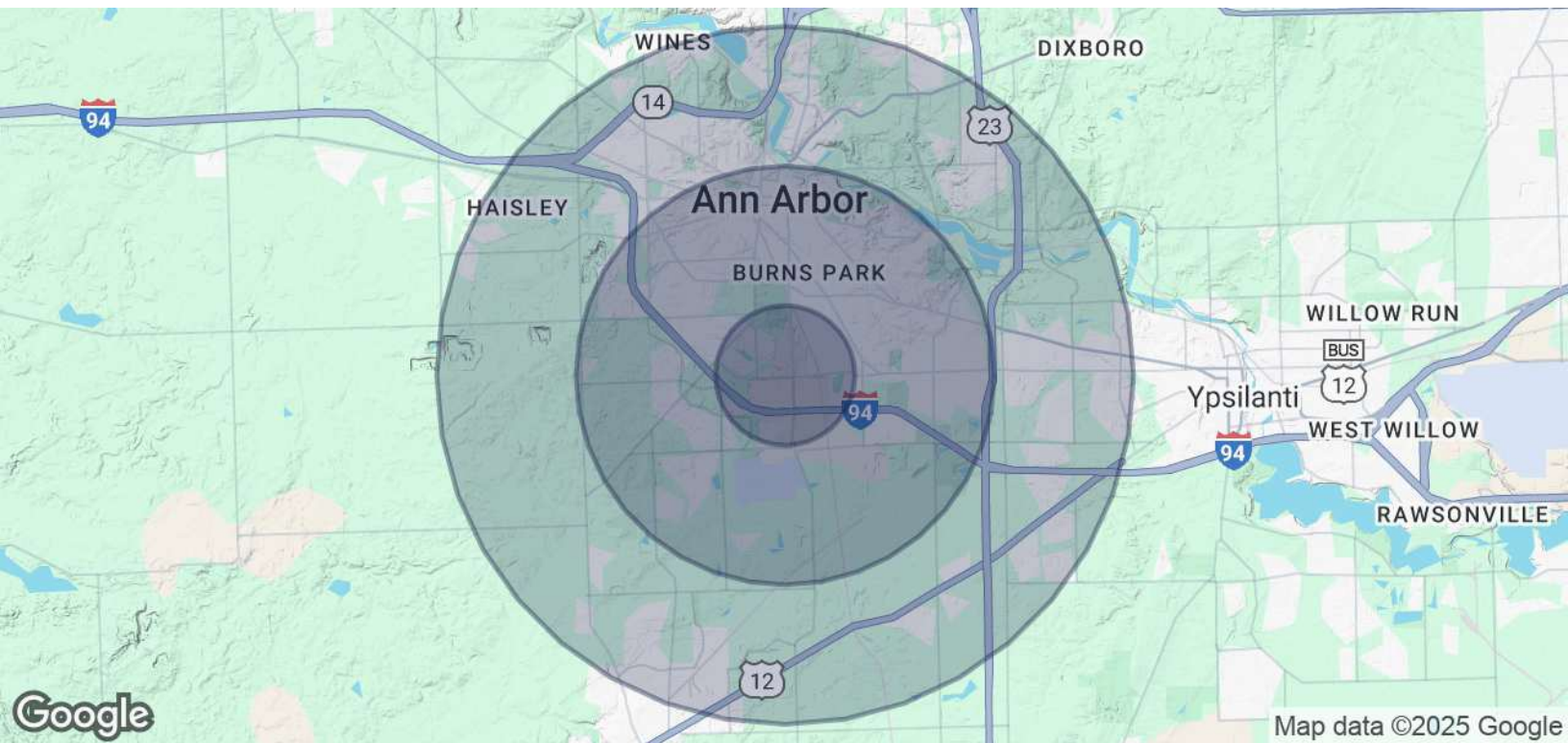
Office: 734.665.6500  
Cell: 734.323.4263  
koneil@oxfordcompanies.com

Map data ©2025 Google

Concord Center  
 455 E. Eisenhower Pkwy. Suite 50  
 Ann Arbor, MI 48104



Integrated  
 Real Estate  
 Services



POPULATION	1 MILE	3 MILES	5 MILES
Total Population	9,584	99,417	184,932
Average age	31.5	31.0	32.8
Average age (Male)	31.8	30.9	32.4
Average age (Female)	31.0	31.1	33.2

HOUSEHOLDS & INCOME	1 MILE	3 MILES	5 MILES
Total households	4,828	37,880	71,962
# of persons per HH	2.0	2.6	2.6
Average HH income	\$59,703	\$76,078	\$79,716
Average house value	\$117,477	\$321,320	\$322,530

\* Demographic data derived from 2020 ACS - US Census



Contact Karen O'Neil for  
 more information or to  
 schedule a tour.

Office: 734.665.6500  
 Cell: 734.323.4263  
[koneil@oxfordcompanies.com](mailto:koneil@oxfordcompanies.com)