



FOR LEASE

BENTONVILLE OFFICE SPACE

Property Highlights

- 4,511 SF available
- \$19.00/RSF + utilities
- Abundant parking available
- Amenities in the park include: New Fitness Center, Bike Storage, Shower & Locker Room, Outdoor Gazebo, and Direct Trail Access
- Located near SAM'S Club HQ and Walmart Home Office
- Co-tenants in office park include Zebra, Walmart, Fiskers Brands, American Greeting, Corp., Energizer

For more information, please contact:

Stephanie Farmer
+1 479 845 3022
sfarmer@sagepartners.com

Marshall Saviers
+1 479 845 3042
mtsaviers@sagepartners.com

479 845 3000
sagepartners.com

*information deemed reliable but not guaranteed

INTERIOR PHOTOS 2703 OTIS CORLEY DRIVE, SUITE 1 | BENTONVILLE, AR



CUSHMAN &
WAKEFIELD

sage
PARTNERS



FLOOR PLAN 2703 OTIS CORLEY DRIVE, SUITE 1 | BENTONVILLE, AR



FOR REFERENCE
AND REVIEW ONLY
NOT FOR
CONSTRUCTION

THIS DRAWING IS ISSUED ON
CONFIDENTIALITY AND COPYRIGHT.
REPRODUCTION OF THIS
DRAWING MUST BE APPROVED BY
NIelsen ARCHITECTURE, L.L.C.

OTIS CORLEY COMPLETE

PROJECT NUMBER: 2019-0024
DRAWN BY: Author
APPROVED BY: Approver
ISSUE DATE: 02/21/2019

NO.	DATE	DESCRIPTION

SHEET CONTENTS:

2703 SUITE 1

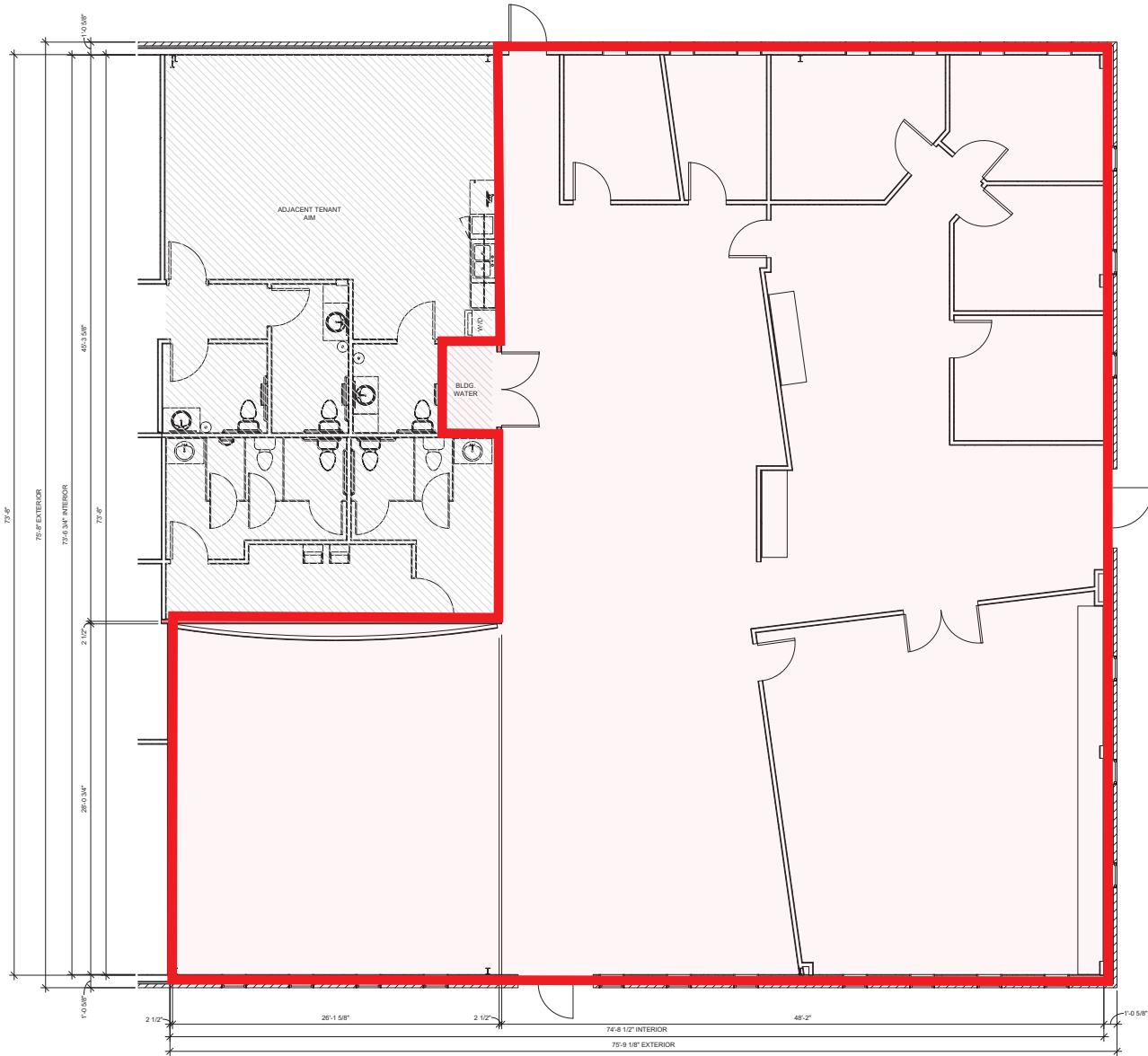
A009



2703 KEY
1" = 40'-0"

SUITE 1

4,511 SF
TAKEN TO CENTERLINE OF DEMISING WALLS
AND OUTER FACE OF EXTERIOR WALLS



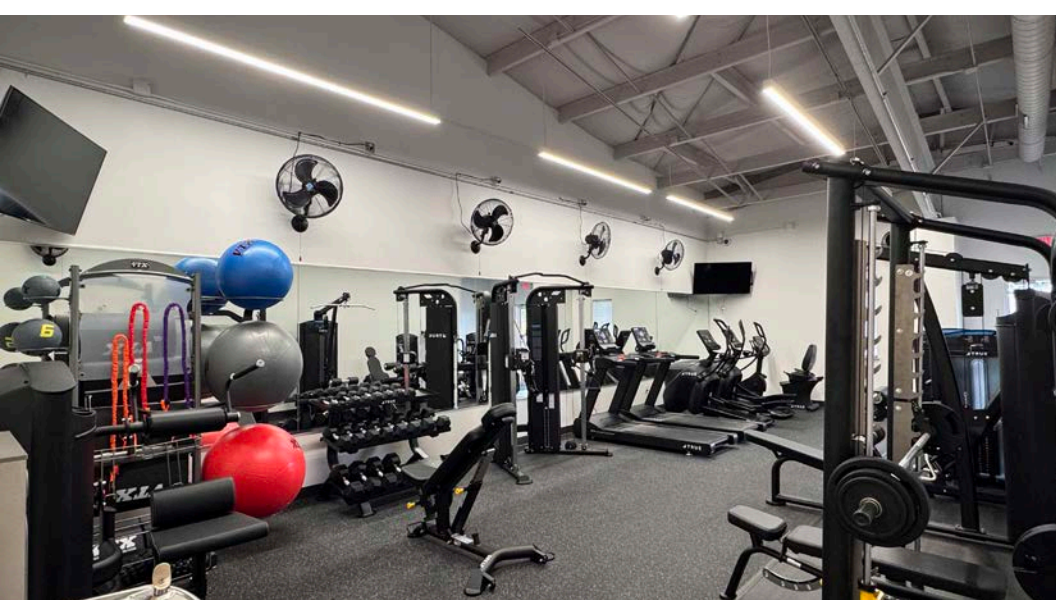
1 2703 SUITE 1
1/4" = 1'-0"

1/24/2019 11:22:24 AM
C:\PROJECTS\2019\2703 OTIS CORLEY DRIVE\2703 SUITE 1\2703 SUITE 1.dwg

AMENITIES OTIS CORLEY OFFICE PARK | BENTONVILLE, AR

CUSHMAN & WAKEFIELD

sage PARTNERS





Downtown Bentonville

Walmart

Walmart
Global Headquarters

Walmart

INTERSTATE
49

sam's club

sam's club
Home Office

SUBJECT PROPERTY

Bentonville Municipal Airport

OSAGE
PARK

NORTHWEST
HEALTH