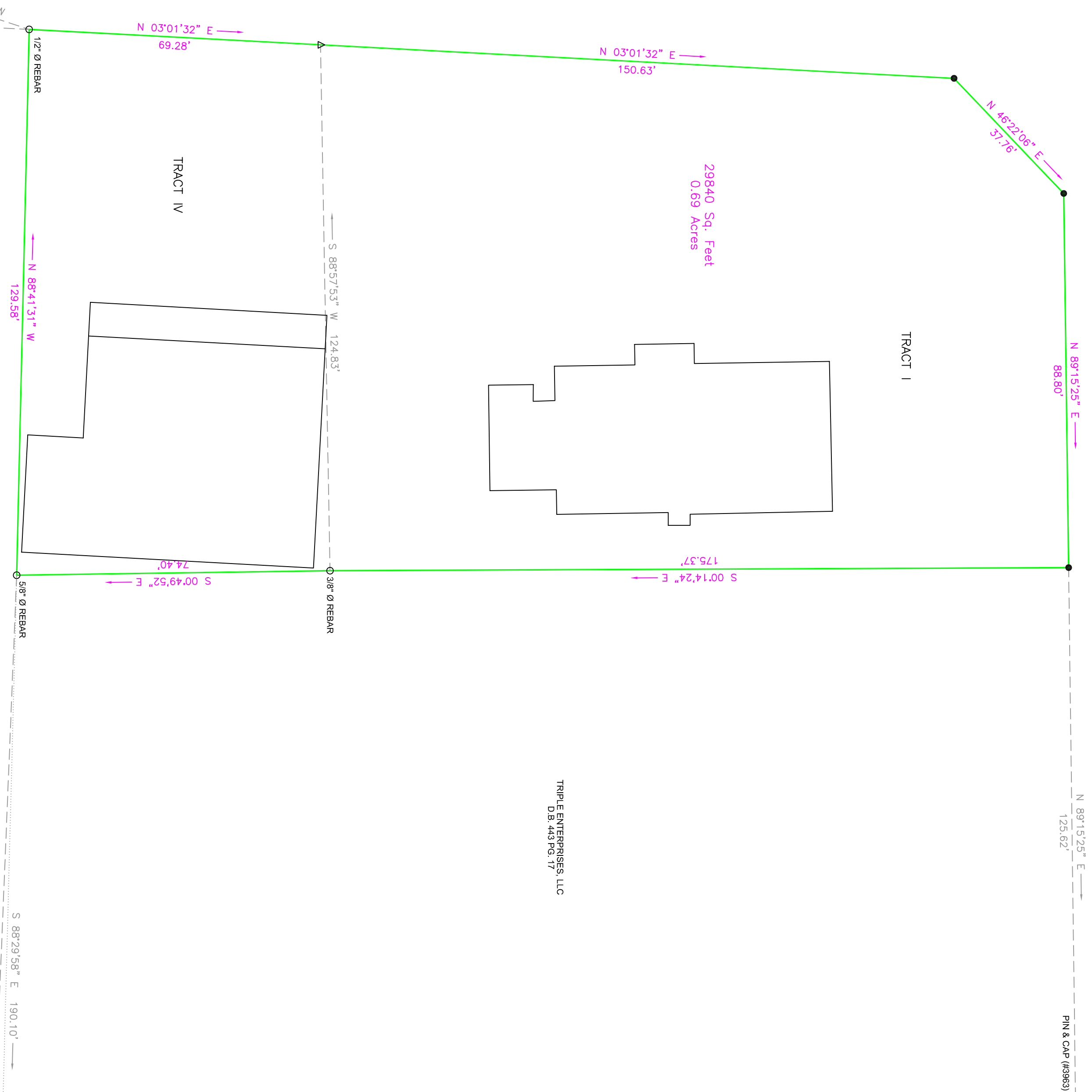




NORTH 12TH STREET (R/W VARIES PER 1985 KY D.O.T. R/W PLANS)

CHESTNUT STREET (R/W VARIES PER 1985 KY D.O.T. R/W PLANS)



JASMINE, INC.  
D.B. 10200 PG. 360

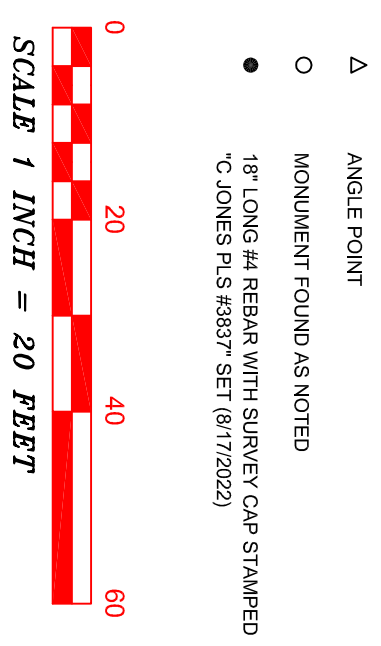
TRIPLE ENTERPRISES, LLC  
D.B. 443 PG. 17

CITY OF MURRAY BM (06 2011 B)  
THE PROPERTY SHOWN AND IDENTIFIED HEREON DOES  
LIE WITHIN THE 4-MILE JURISDICTIONAL LIMIT OF THE CITY  
OF MURRAY SUBDIVISION REGULATIONS.

A SURVEY OF THE PROPERTY RECORDED TO JRM TRUST DATED MARCH 1, 2002,  
314 MAIN STREET, MURRAY, KY 42071 AS RECORDED IN DEED BOOK 441 PAGE 939  
IN THE CALLOWAY COUNTY CLERK'S OFFICE.

I hereby certify that the survey depicted by this plat was done by persons  
under direct supervision by a method of means indicated below:  
1. Total Station  
2. GPS (Trimble) with 5000 ft. radius  
3. Real Time Kinematic (RTK) with 5000 ft. radius  
4. GPS (Trimble) with 5000 ft. radius  
5. GPS (Trimble) with 5000 ft. radius  
This survey as shown hereon is a URBAN survey and the accuracy and precision  
of said survey meets all the specifications of the date.  
GPS Measurements are based on NAD83 (Horizontal) / NAVD88 (Vertical),  
and GEOID2018 (Geoid Height).  
This plat represents a boundary survey and complies with 201 KAR 18:150.

Christopher B. Jones PLS #38337 Date



SCALE 1 INCH = 20 FEET

1\"/>

<b>CHRISTOPHER JONES SURVEYING</b> 270.293.7229 318 ERWIN ROAD, MURRAY, KY	
<b>PLAT OF SURVEY</b>	
FOR JRM TRUST 1011 BUCKINGHAM CIRCLE FRANKLIN, TN 37064	
DATE OF SURVEY	8/12/2022
REVISION DATE	8/18/2022
SHEET	1 OF 1
DRAWN BY	CBU
CHECKED BY	CBU
FILE NO.	22034