



[CLICK HERE TO VIEW PROPERTY VIDEO](#)



# LAKEPOINT COMMERCE CENTER

## BUILDING 100

740 LakePoint Parkway, Cartersville, Georgia 30121

**174,760 SF Available for Lease**



LEE &  
ASSOCIATES

COMMERCIAL REAL ESTATE SERVICES

LEASING AGENT



CORE5  
INDUSTRIAL PARTNERS

DEVELOPER

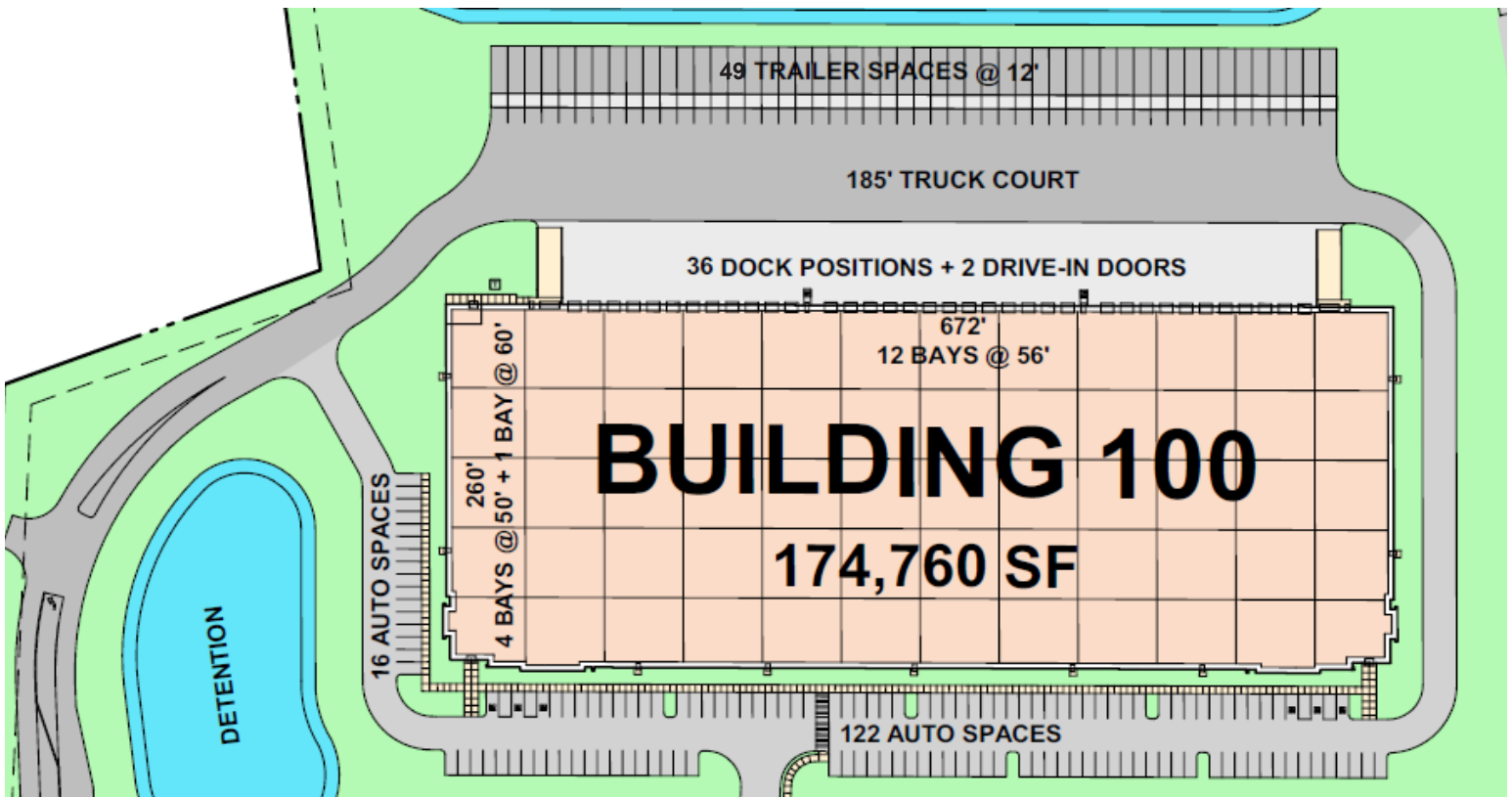
# LAKEPOINT COMMERCE CENTER

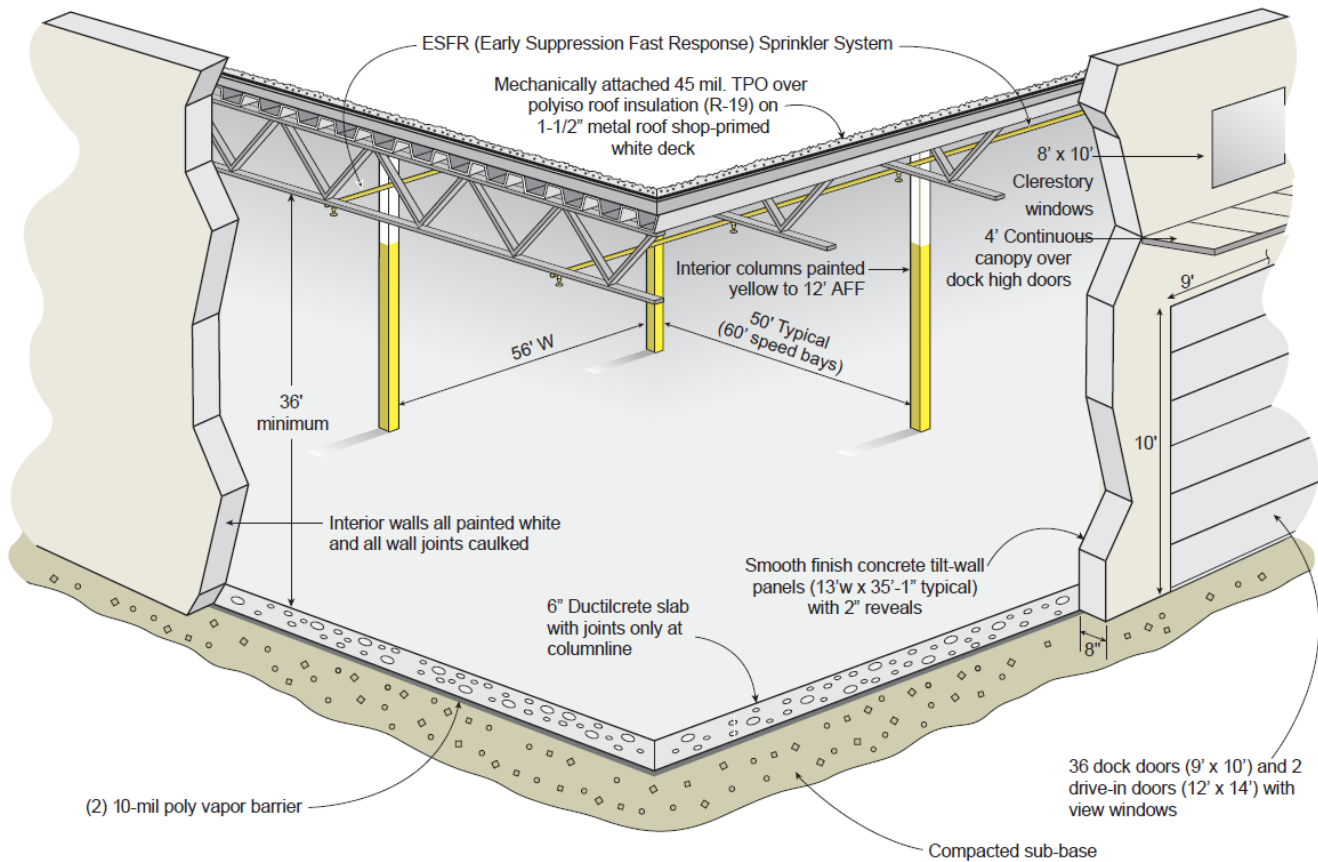
740 LakePoint Parkway, Cartersville, Georgia 30121

## 174,760 SF Available for Lease

Core5 LakePoint Commerce Center is strategically located less than one mile from I-75 in the heart of Northwest Georgia's industrial corridor. The site offers excellent highway access and is just under 60 miles from the Appalachian Regional Port, providing direct rail connectivity to the Port of Savannah. This prime location makes LakePoint Commerce Center an ideal hub for local, regional, and national distribution.

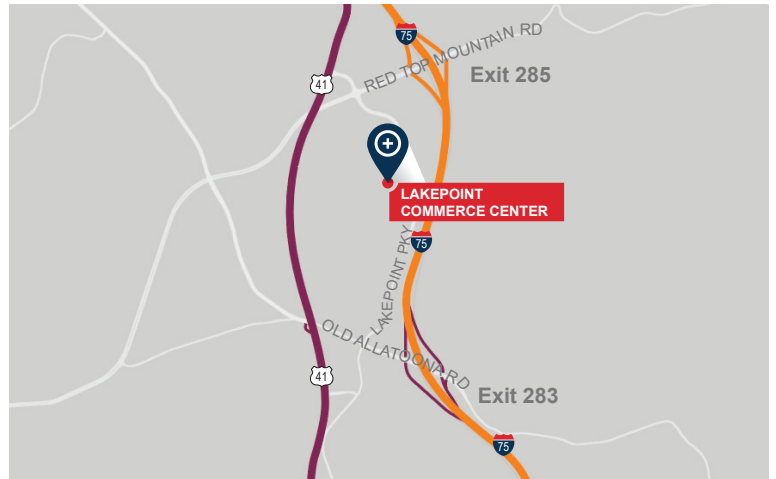
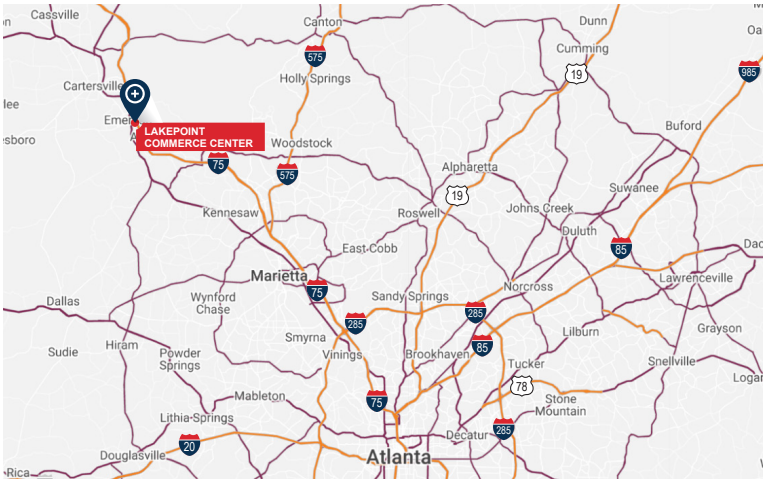
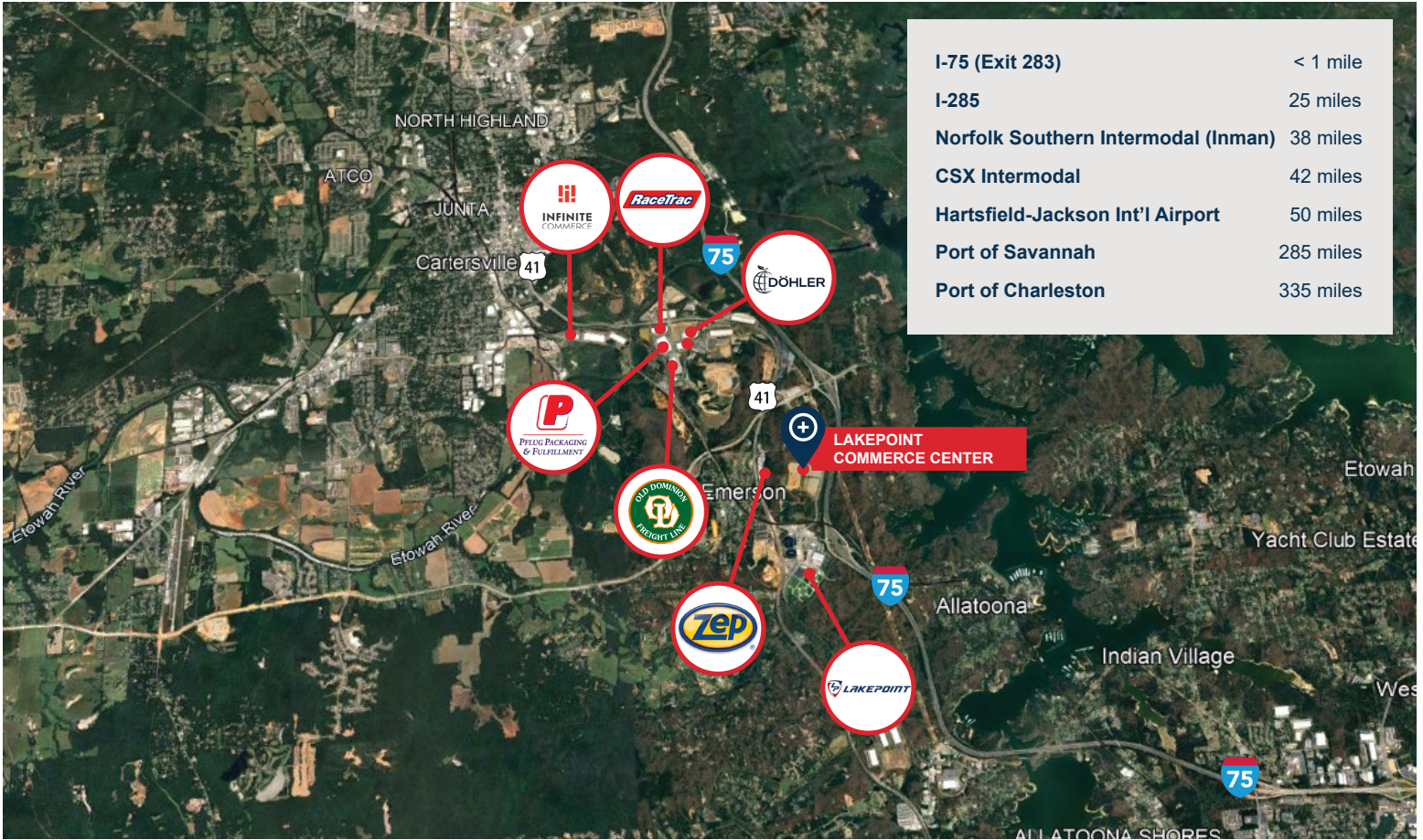
Bartow County is home to more than 140 manufacturers and boasts one of Georgia's strongest labor markets, with a population of over one million people within a 45-minute drive.



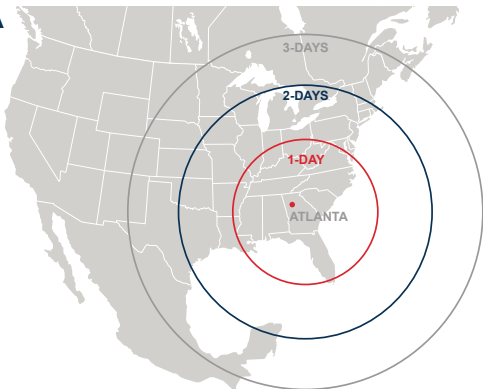


## BUILDING SPECIFICATIONS

<b>Square Footage</b>	174,760 SF (260' x 672')
<b>Configuration</b>	Rear Load
<b>Column Spacing</b>	56' wide x 50' deep, with 60' loading bays (14,560 SF bays)
<b>Clear Height</b>	36' clear minimum
<b>Dock High Doors</b>	36 – 9' x 10' insulated dock high doors
<b>Drive-In Doors</b>	2 – 12' x 14' ramped, drive-in doors
<b>Truck Court Depth</b>	185' deep with 60' concrete apron
<b>Auto Parking</b>	138 auto spaces
<b>Trailer Storage</b>	49 trailer storage locations
<b>Electrical</b>	277/480 volt, 3 phase, Two (2) 1,000 amp services
<b>Sprinkler</b>	ESFR sprinkler system



**DAYS TRUCK DRIVE TO/FROM ATLANTA**



**Mitchell Townsend**  
 Vice President Investments  
 O 404.262.5418  
 C 706.537.9520  
 mtownsend@c5ip.com



**Billy Snowden, SIOR**  
 Executive VP / Principal  
 O 404.442.2839  
 C 770.354.5981  
 bsnowden@lee-associates.com

**Willie Candler**  
 Principal  
 O 404.442.2802  
 C 770.881.1368  
 wcandler@lee-associates.com

© Copyright 2021 Core5 Industrial Partners, LLC. All rights reserved. CORE5, CORE5 INDUSTRIAL PARTNERS, and the stylized "C" CORE5 INDUSTRIAL PARTNERS design / logo are service marks of Core5 Industrial Partners, LLC for its real estate services, namely, acquisition, rental, brokerage, development, leasing, and management of industrial real estate property. These marks may not be used without express permission of Core5 Industrial Partners, LLC.