

FOR LEASE

DRUMHELLER BUILDING

1 W. ALDER ST. WALLA WALLA, WA



Retail/Office Space in Historic Downtown Walla Walla 4,000 sq. ft. Space Available

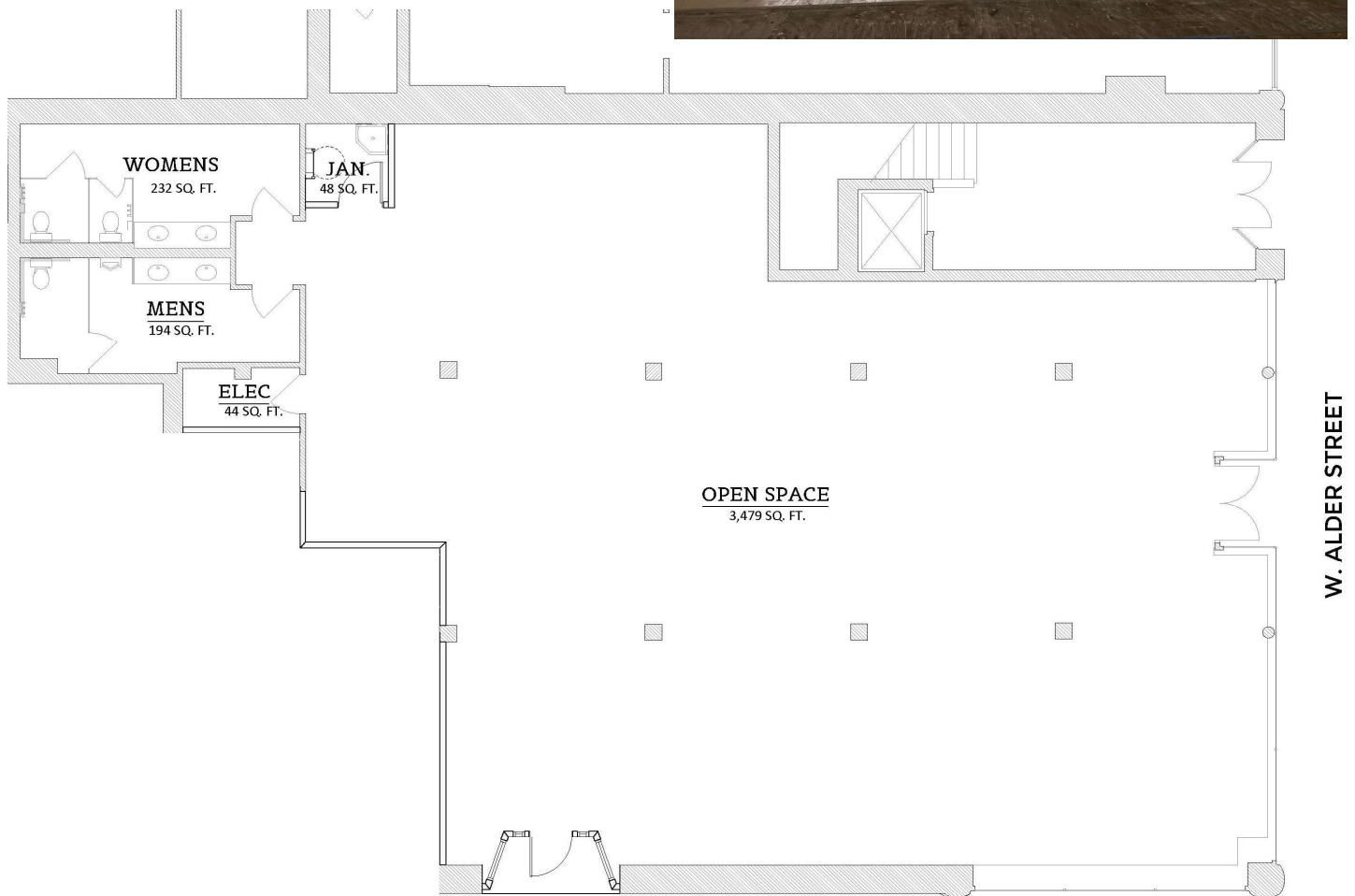
- Centrally Located
- Storefront Facing Alder St. & 2nd Ave.
- Lots of Foot Traffic on Busy Intersection
- Ample Parking - On-street 2-Hour Parking + 1 Block From All Day Free Parking Lot
- Original Hardwood Flooring
- 16' Tin Ceilings
- Exposed Wood Columns



Drew Davis
509.386.0000
ddavis@tarragon.com

www.tarragonnorthwest.com

CONCEPT LAYOUT



S. SECOND AVENUE



Drew Davis
509.386.0000
ddavis@tarragon.com

www.tarragonnorthwest.com