

Office/Warehouse Space for Sublease

10351 NAPLES STREET NE | BLAINE, MN

11,200 Sq. Ft. Available

Four (4) Drive-In Doors

52,100 Sq. Ft. Outdoor Storage



Cetra Partners

4455 White Bear Parkway, Suite 600
White Bear Lake, MN 55110

Dan Friedner | Principal
M: 612-599-7864
E: dan@cetrapartners.com

Jay Chmielecki | Principal
M: 612-275-3772
E: jay@cetrapartners.com

Patrick Cullen | Principal
M: 651-308-4271
E: patrick@cetrapartners.com

Property Overview

LOCATION

10351 Naples Street NE | Blaine, MN

AVAILABLE SUBLEASE SPACE

Approx. 4,640 Sq. Ft. - Office

Approx. 6,560 Sq. Ft. - Warehouse/Shop

Approx. 11,200 Sq. Ft. - Total

OUTDOOR STORAGE/YARD

52,100 Sq. Ft.

LOADING

Four (4) 12'x14' Drive-In Doors
(Two Drive-Throughs)

CLEAR HEIGHT

19'

SUBLEASE RATE

\$12.60 Per Sq. Ft. NNN

OUTDOOR STORAGE/YARD RATE

\$2.50 Per Sq. Ft.

SUBLEASE TERM

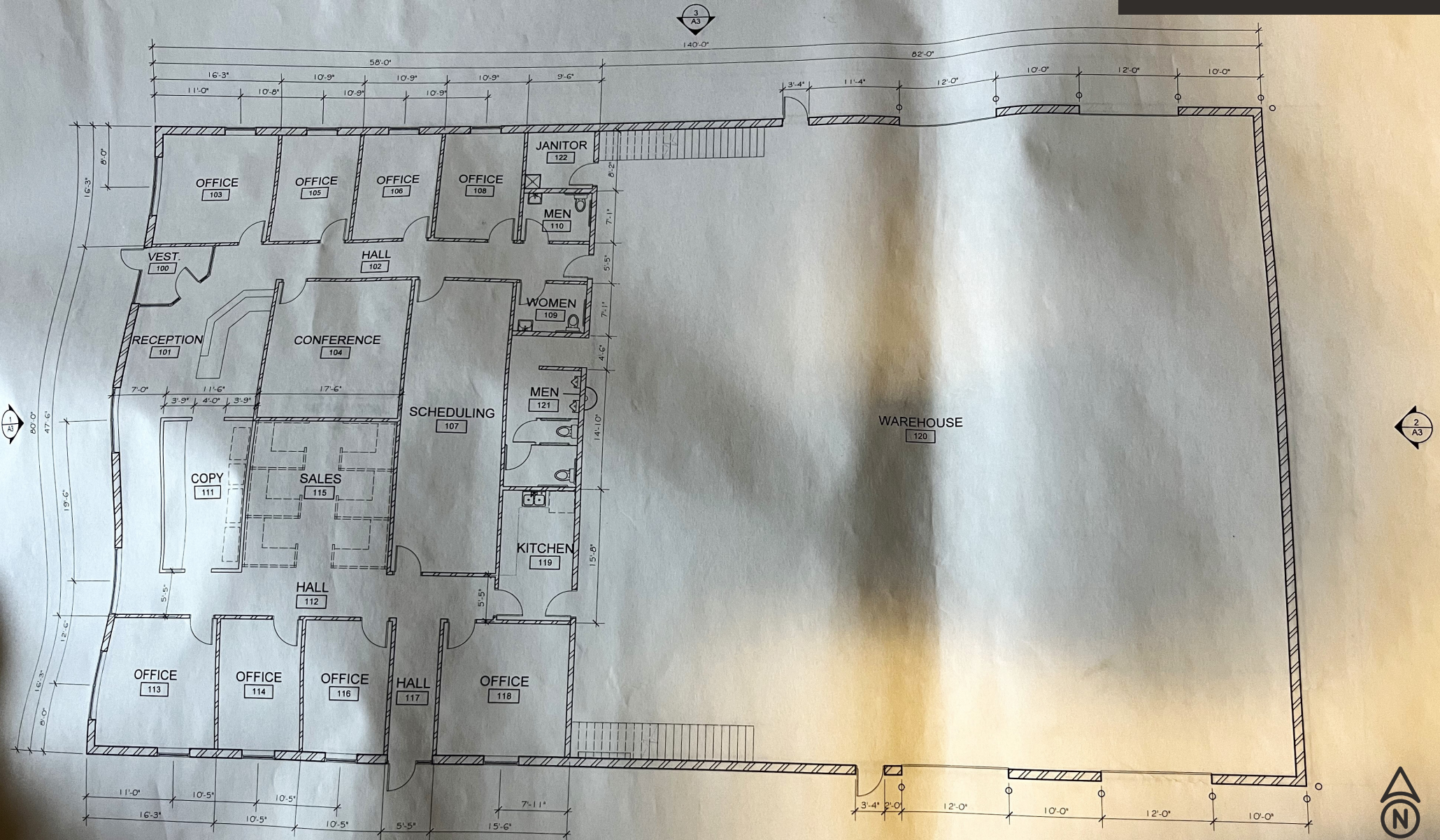
Sublease expires 1/31/2029



Office/Warehouse Space for Sublease

10325 FLANDERS STREET NORTHEAST | BLAINE, MN

Floor Plan -
11,200 Sq. Ft. Available



Office/Warehouse Space for Sublease

10325 FLANDERS STREET NORTHEAST | BLAINE, MN

Aerial Map View -
11,200 Sq. Ft. Available



Kwik Trip
Culver's
Jersey Mike's
SUBS

at home
The Home Depot Company

Michaels
Cub
FOODS

WALMART
SUPERCENTER

Fleet Farm