

FOR LEASE



537 Long Point Rd, Mt Pleasant, SC 29464, USA

16,475 SF Building 4 Suites Available Now

Brian Connolly

Senior Managing Director

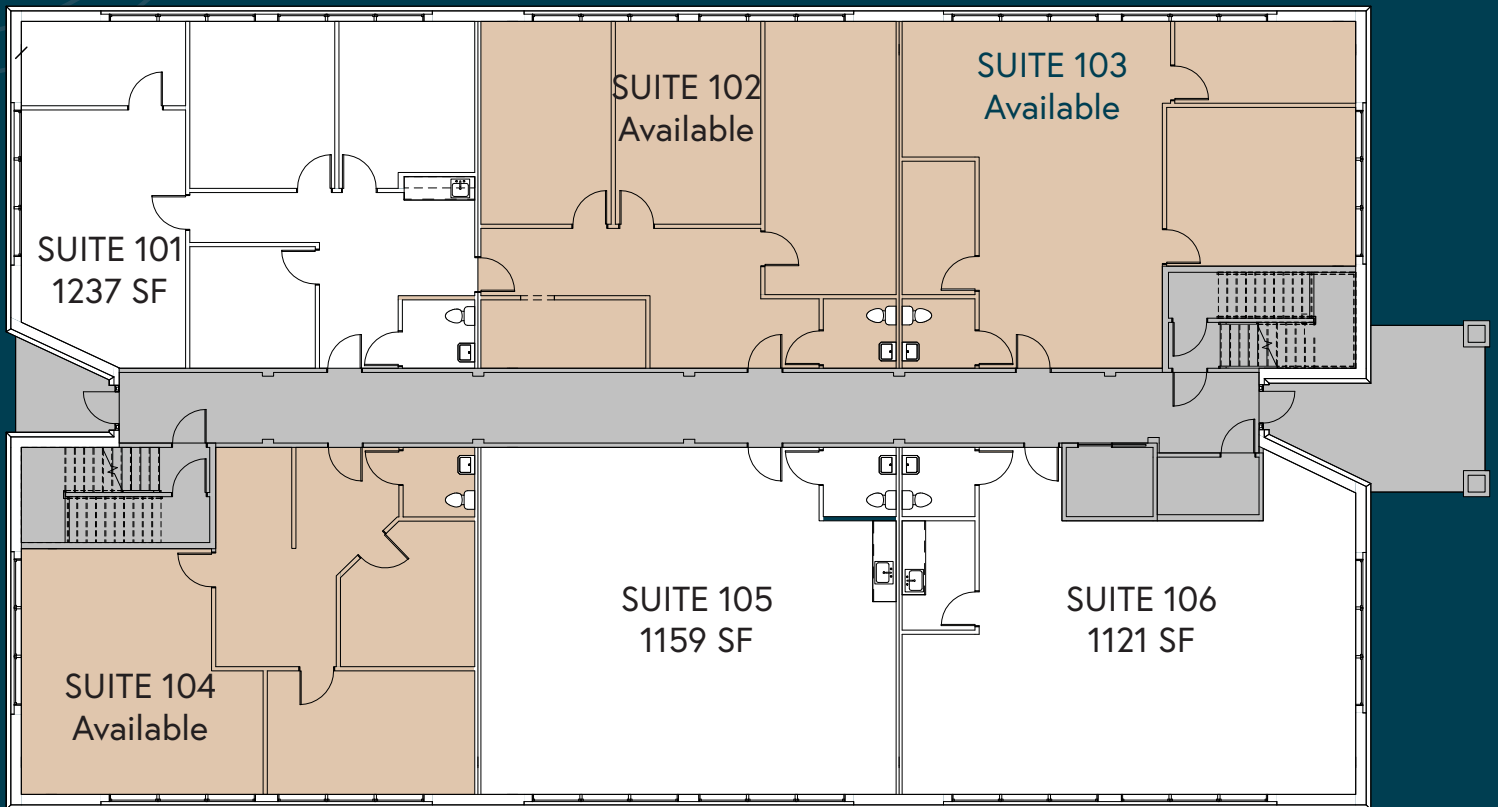
+1 (202) 316-4846

brian.connolly@jll.com

RCB
DEVELOPMENT



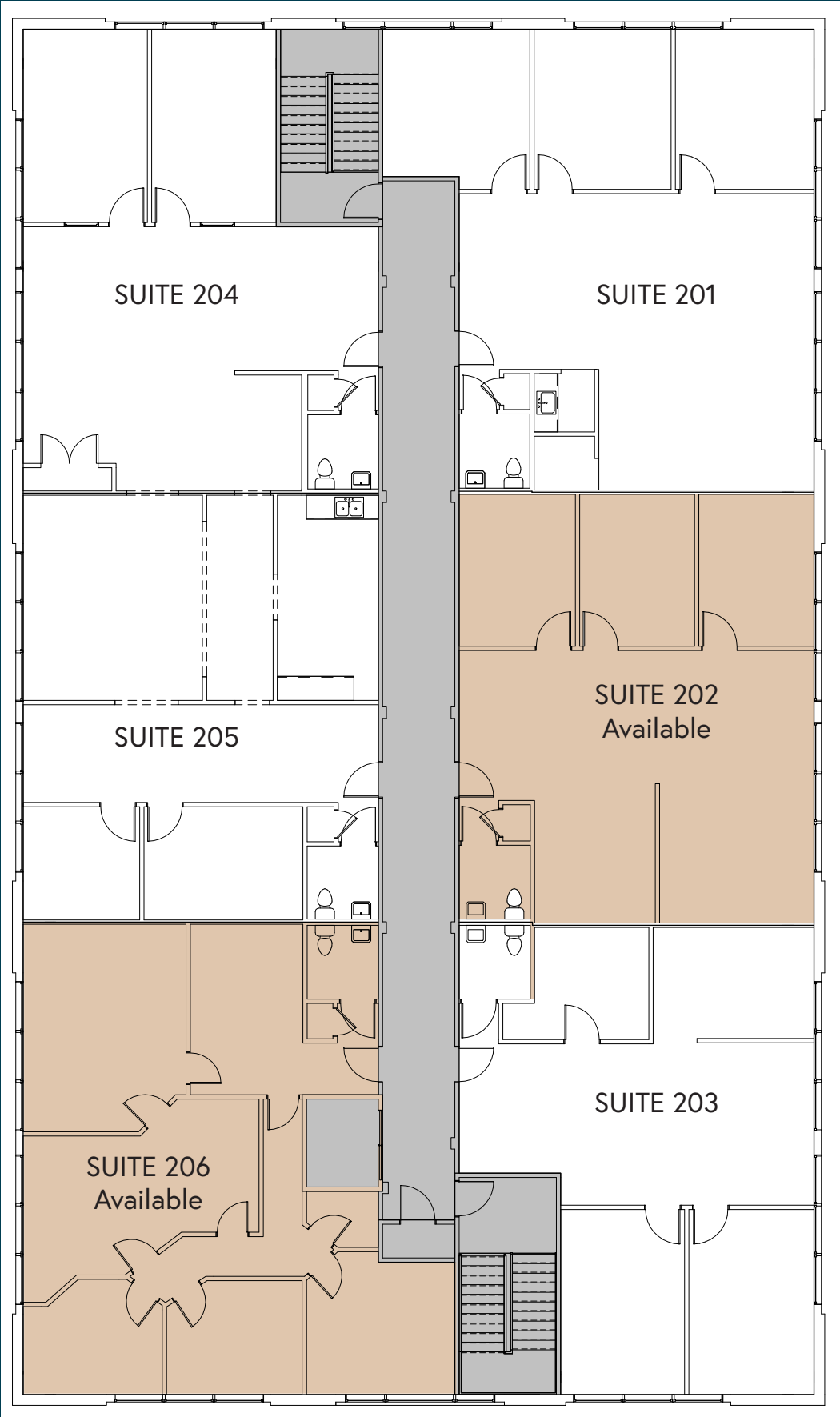
First Floor



Suite 103 - 1,099 SF



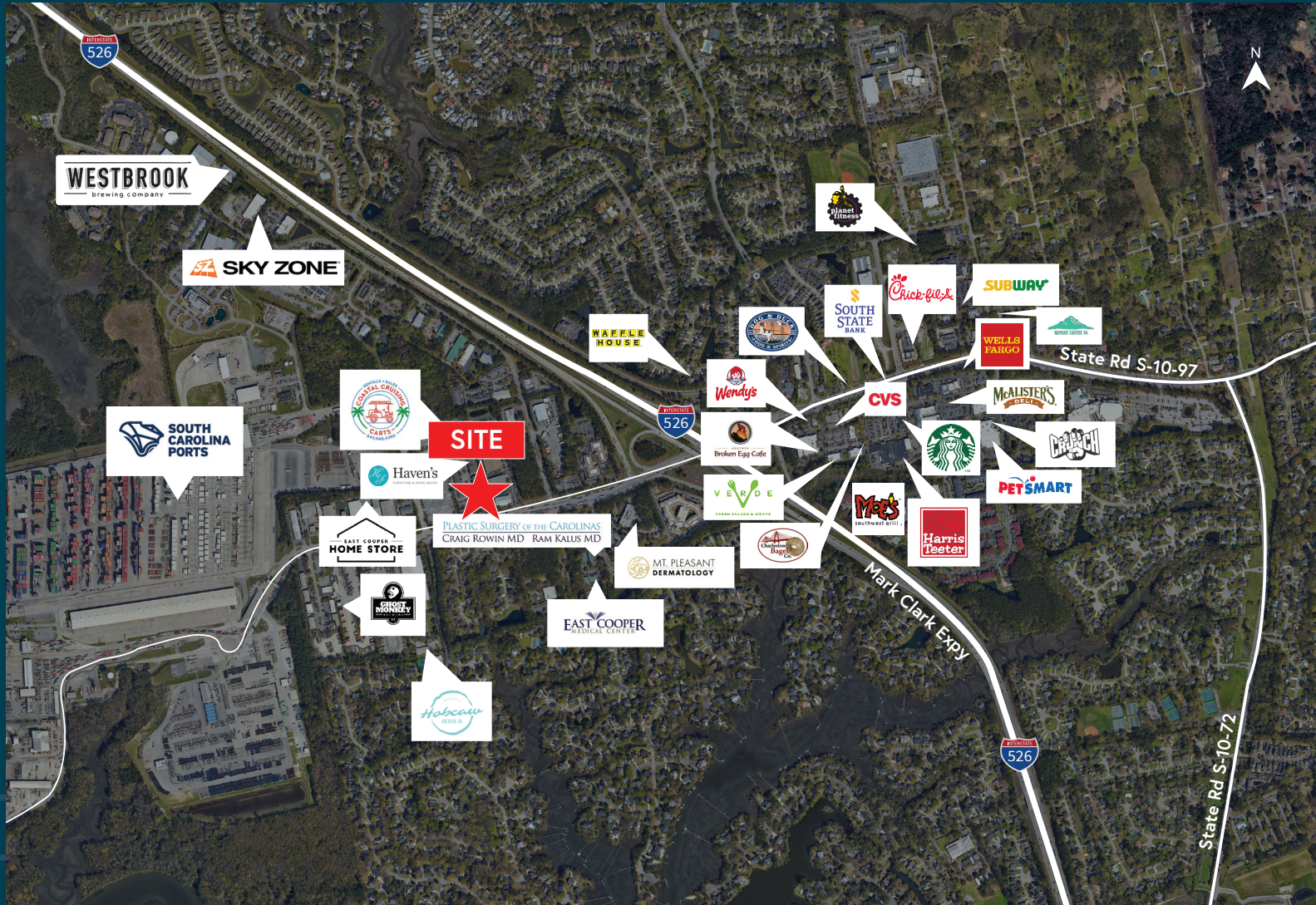
Second Floor



Prime Location

Near Long Point Rd & I-526, easily accessible from Mount Pleasant & Charleston suburbs.

537 Long Point Road is right down the road from The Port of Charleston's Wando Welch terminal and minutes from both Daniel Island and Mt. Pleasant. Ample dining and shopping amenities nearby including Starbucks and Teeter.



Leasing information:

Brian Connolly
Senior Managing Director, Brokerage
brian.connolly@jll.com
+1 (202) 316-4846

Although information has been obtained from sources deemed reliable, neither Owner nor JLL makes any guarantees, warranties or representations, express or implied, as to the completeness or accuracy as to the information contained herein. Any projections, opinions, assumptions or estimates used are for example only. There may be differences between projected and actual results, and those differences may be material. The Property may be withdrawn without notice. Neither Owner nor JLL accepts any liability for any loss or damage suffered by any party resulting from reliance on this information. If the recipient of this information has signed a confidentiality agreement regarding this matter, this information is subject to the terms of that agreement. ©2025. Jones Lang LaSalle IP, Inc. All rights reserved.

RCB
DEVELOPMENT

