

Valley Creek Commons

Office and retail space for lease!

8380 City Centre Drive
Woodbury, MN 55125



WELLINGTON
MANAGEMENT



Kirsten Pinger
651-999-5519
kpinger@wellingtonmgt.com



Centrally located office and retail space surrounded by shopping, restaurants and nature.

Valley Creek Commons is a single-story brick office and retail building located in Woodbury's City Centre district. This property is located at the intersection of Valley Creek Road and Radio Drive in the heart of downtown Woodbury. Surrounded by excellent retail and office services, Valley Creek Commons provides convenience, extensive parking, and exterior signage.

HIGHLIGHTS

- Remodeled common areas
- Conveniently located near banks, shopping, and restaurants
- Walkable to Tamarack Nature Preserve
- Affluent population within one mile (average household income: ~\$152,132)
- Updated exterior facade with building signage
- ADA compliant

Space Available

Owner, Developer, Manager, Leasing

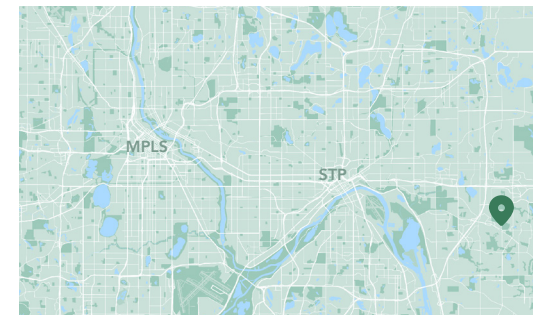
17,000 SF office; 9,072 SF available

89 surface stalls, 5.2 : 1,000 SF

Single-story office/retail building

Built in 1996

East Metro



Available Suites



Suite 110 - 1,345 SF

3D Tour 



Suite 140 - 2,016 SF

3D Tour 



Suite 140 (Virtually Staged)

3D Tour 

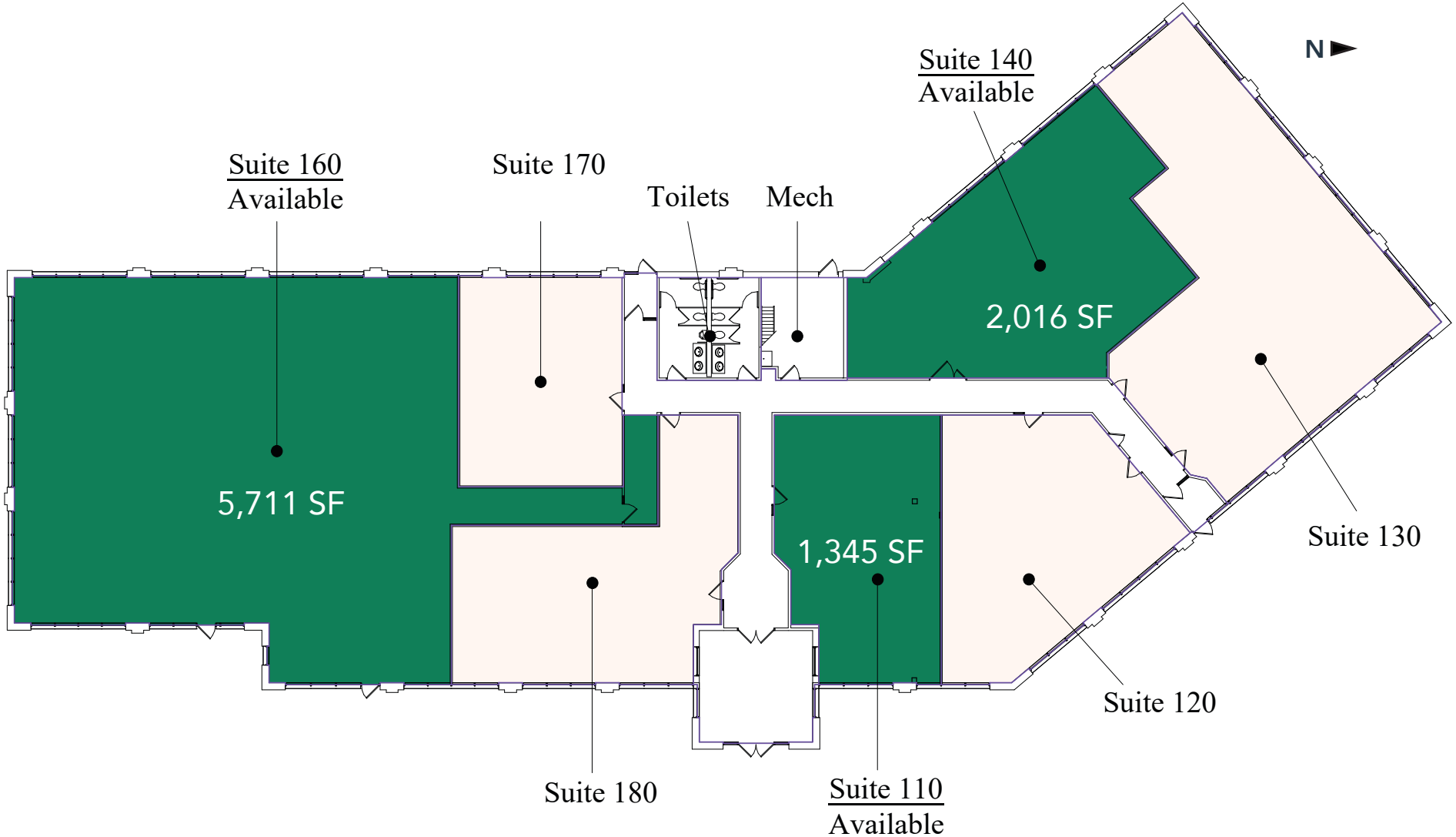


Suite 160 - 5,711 SF

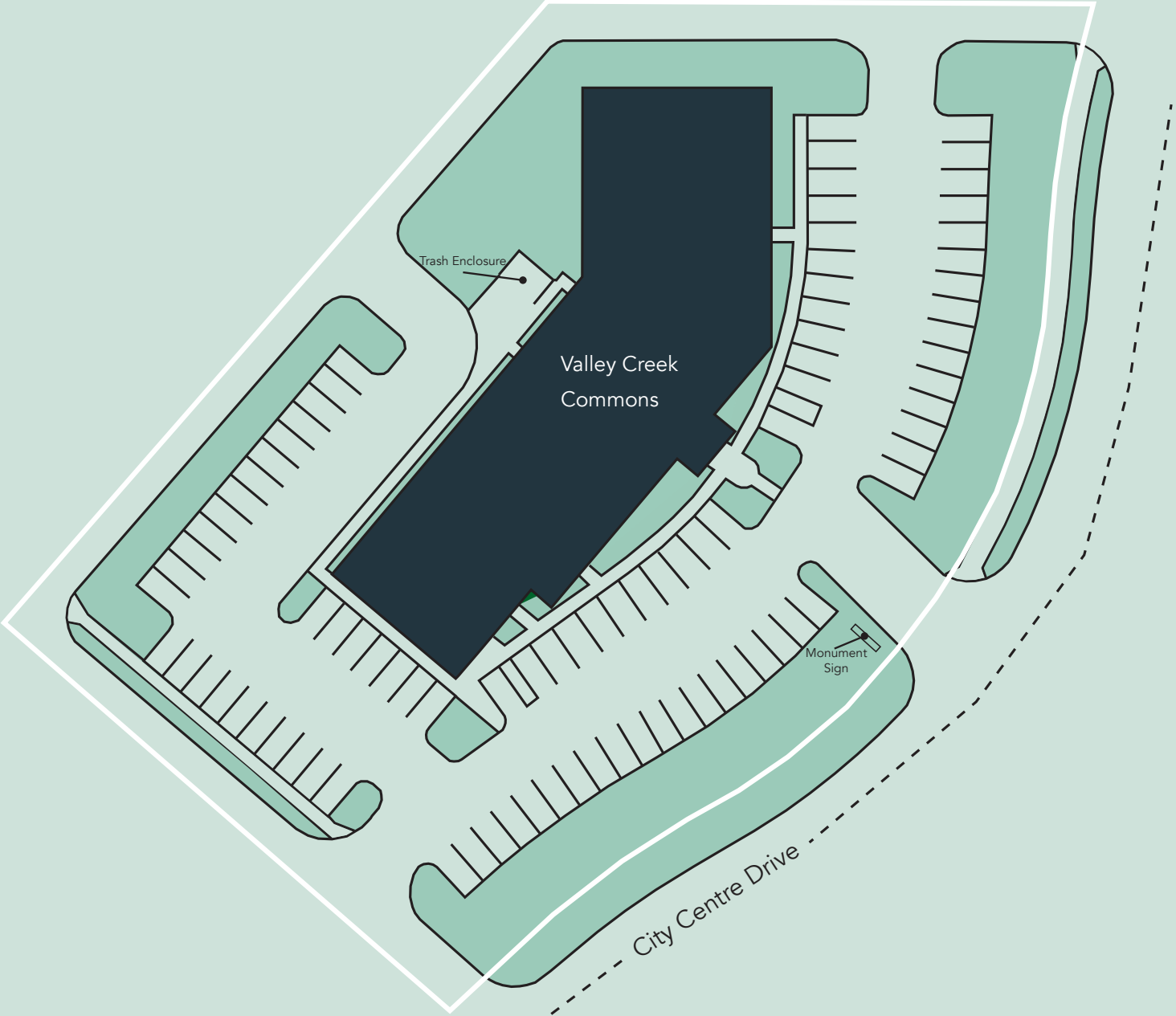
3D Tour 

Floor Plans

- Building Common Areas
- Available Space
- Occupied Space

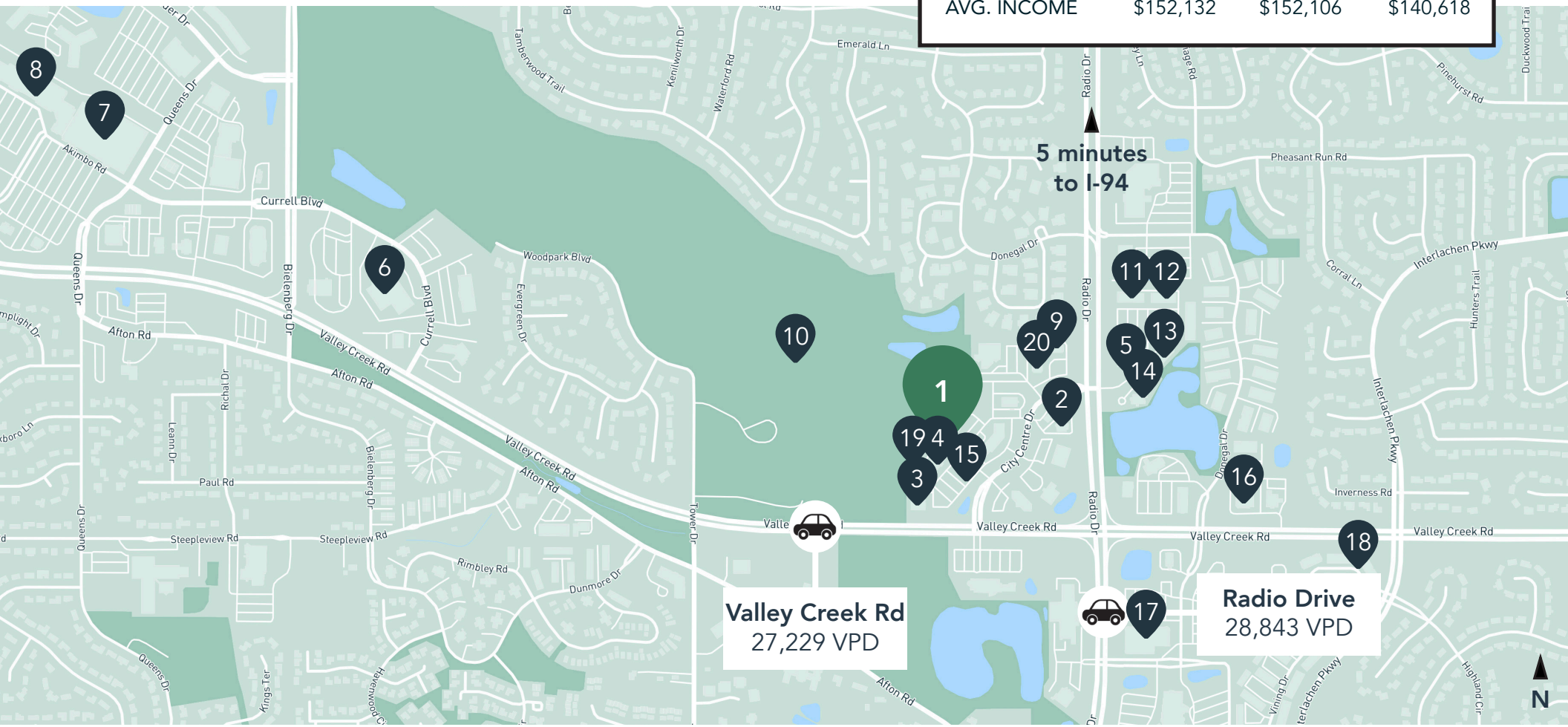


Site Plan



The Neighborhood

Demographics	1 MILE	3 MILES	5 MILES
POPULATION	11,287	77,492	150,911
HOUSEHOLDS	4,194	29,961	56,170
AVG. INCOME	\$152,132	\$152,106	\$140,618



Hot Spots

- | | | | |
|-------------------------|------------------------------|---------------------------|-----------------------|
| 1. Valley Creek Commons | 6. U.S. Postal Service | 11. Leeann Chin | 16. Walgreens |
| 2. Kwik Trip | 7. Target | 12. Acapulco | 17. Kowalski's Market |
| 3. Punch Pizza | 8. Total Wine | 13. Erik's | 18. Woodbury Park |
| 4. Patina | 9. Wayback Burgers | 14. Associated Bank | 19. Bruegger's Bagels |
| 5. Panera Bread | 10. Tamarack Nature Preserve | 15. yum! Kitchen & Bakery | 20. Von Hanson's Meat |

Valley Creek Commons

8380 City Centre Drive
Woodbury, MN 55125



PROPERTY MANAGER

Kirsten Pinger

651-999-5519
kpinger@wellingtonmgt.com



LEASING AGENT

Todd Kaufman

651-999-5505
tkaufman@wellingtonmgt.com



St. Paul-based Wellington Management, Inc. owns, manages and develops commercial and residential properties throughout the Twin Cities metro area. We work to make long-term community impact through careful district planning and neighborhood relationships.

Main (651) 292-9844
Fax (651) 292-0072
wellingtonmgt.com

Wellington Management © 2021 All rights reserved.