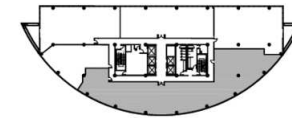
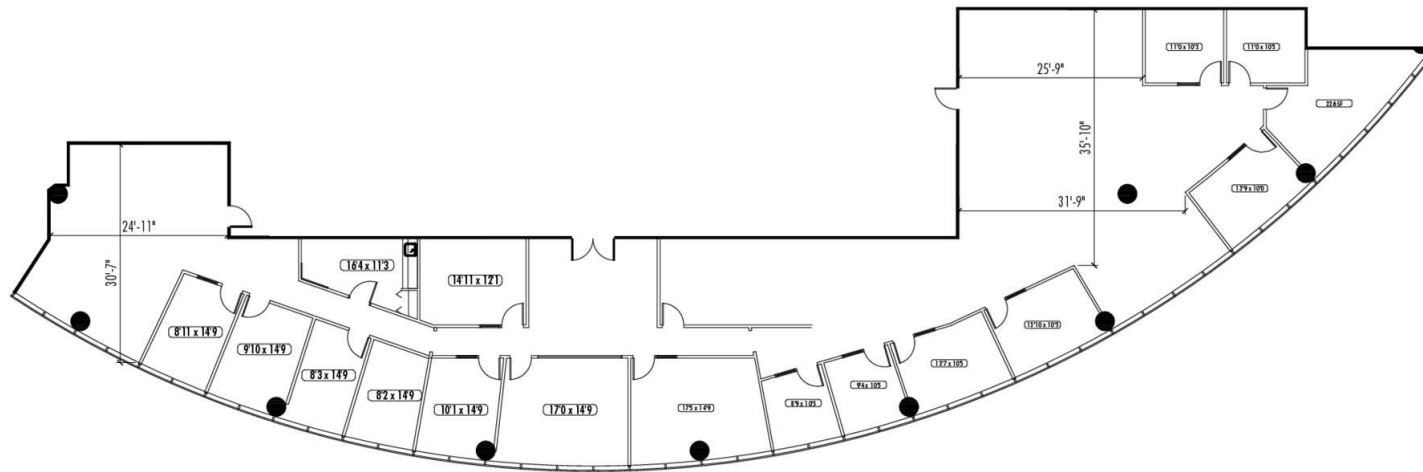


2000 Riveredge

Suite 580 | 7,198 RSF



Key Plan



| | | |
|---|--|--|
| Alex Port 404.924.2816 aport@lpc.com | Gil Russell 404.519.0671 grussell@lpc.com | Michael Howell 404.926.1640 mhowell@lpc.com |
|---|--|--|

Lincoln