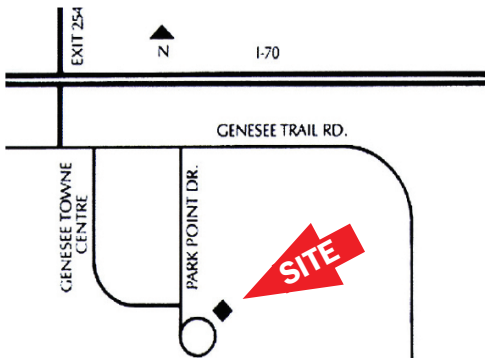




## 602 PARK POINT DRIVE Golden, Colorado 80401

### PROPERTY FEATURES

- Excellent access to I-70
- Close to retail and restaurants
- Common conference room and showers
- Responsive property management
- Abundant parking



### BUILDING SPECIFICATIONS

Available:		
Suite 233		582 RSF
Suite 275		620 RSF
Suite 150		1,134 RSF
Suite 220		1,207 RSF
Suite 250		1,772 RSF
Suite 215		2,077 RSF
Suite 105		2,134 RSF
Suite 130		2,167 RSF

**Lease Rate:** \$18.50/RSF FSG  
**Stories:** 2  
**Building Size:** 36,402 SF

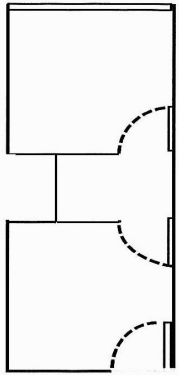
**FOR MORE INFORMATION CONTACT:**

**JAMIE MACBETH**

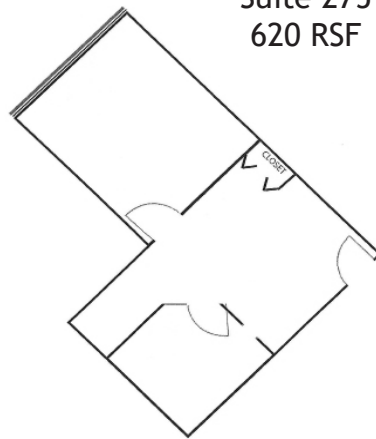
jmacbeth@gcgcre.com | 720.476.5229

**RENÉE SPICER**

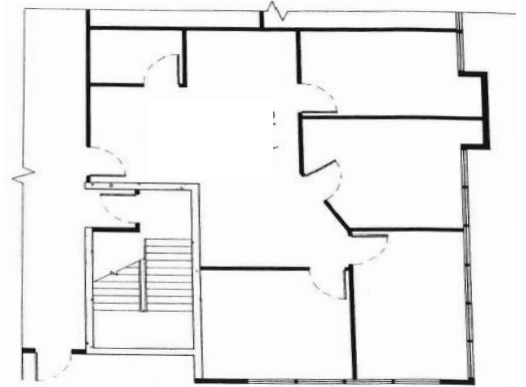
rspicer@gcgcre.com | 720.476.5226



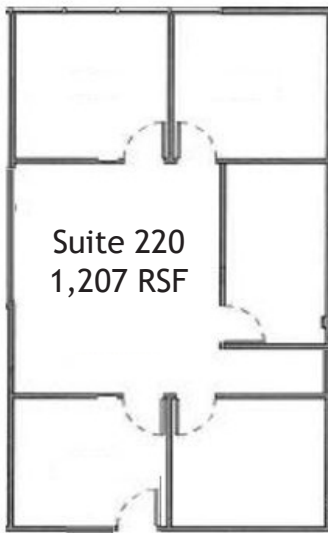
Suite 233  
582 RSF



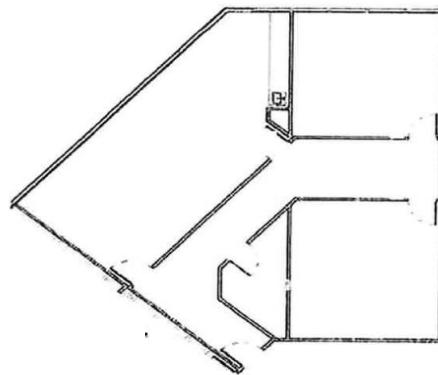
Suite 275  
620 RSF



Suite 150  
1,134 RSF

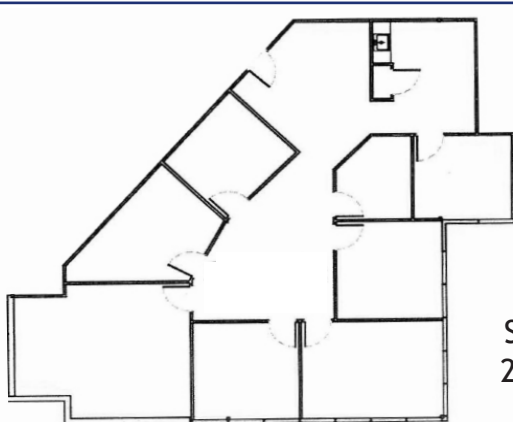
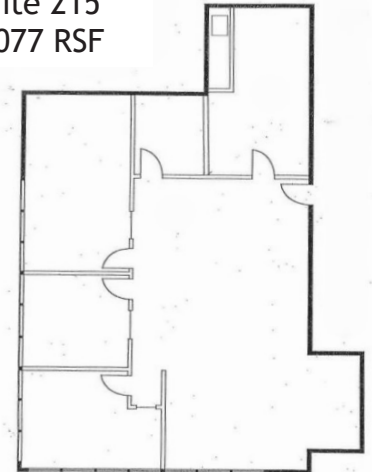


Suite 220  
1,207 RSF

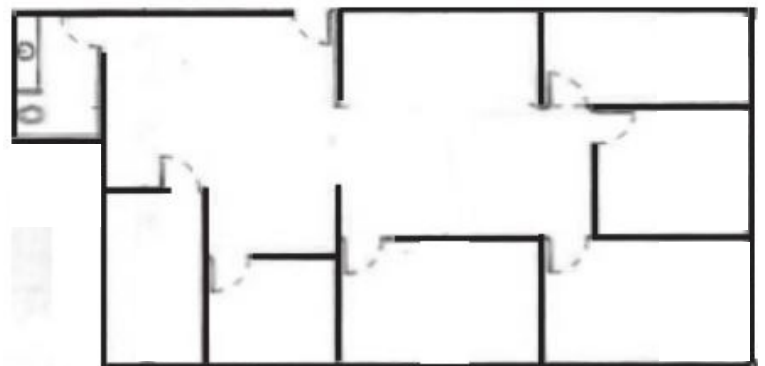


Suite 250  
1,772 RSF

Suite 215  
2,077 RSF



Suite 105  
2,134 RSF



Suite 130  
2,167 RSF

**FOR MORE INFORMATION CONTACT:**

**JAMIE MACBETH**

jmacbeth@gcgcre.com | 720.476.5229

**RENÉE SPICER**

rspicer@gcgcre.com | 720.476.5226