

865 FLORIDA STREET

FOR LEASE | CREATIVE FLEX SPACE IN THE MISSION DISTRICT

TCP
TOUCHSTONE
COMMERCIAL PARTNERS



WWW.TCPRE.COM

GEORGE FARLEY

C 415.994.5767

george@tcpre.com DRE # 02233755

ETHAN MANN

C 415.990.9127

ethan@tcpre.com DRE # 02223262

865 FLORIDA STREET

PROPERTY SUMMARY

ADDRESS

865 Florida Street, San Francisco, CA 94110

AVAILABLE SPACE

Ground Floor +/- 2,711 Square Feet

RENTAL RATE

Negotiable

AVAILABLE

Immeadiately



BUILDING ATTRIBUTES

- + Newly Renovated Property in Heart of Mission District
- + High-End Full Kitchen
- + Full Sprinklered
- + Expansive 18+ Foot Ceilings
- + Washer & Dryer on Ground Floor
- + Abundant Natural Light
- + Three (3) Private Offices
- + Three (3) Full Baths w/ Showers & One (1) Half Bath



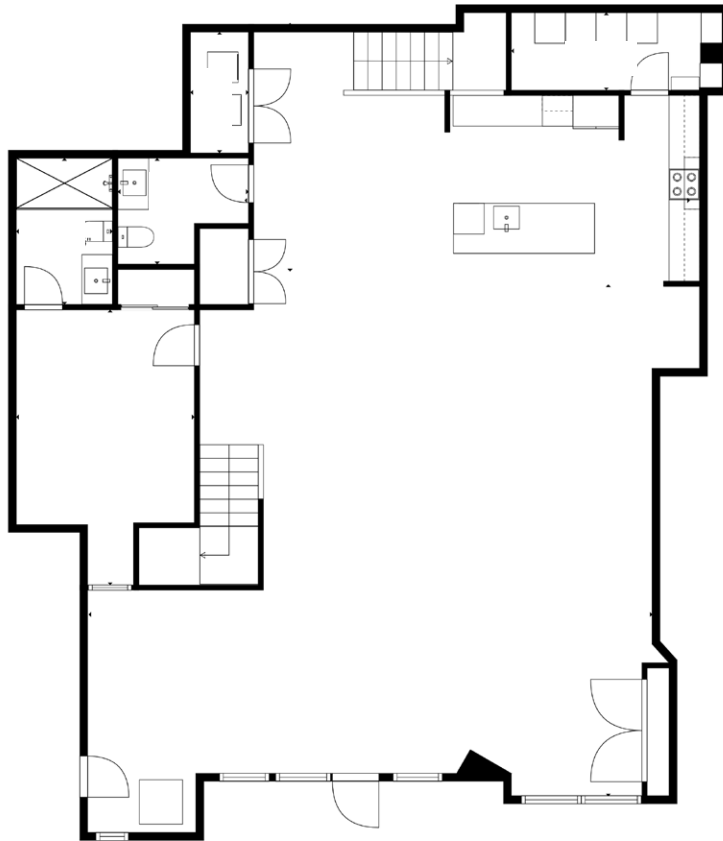
865 FLORIDA STREET



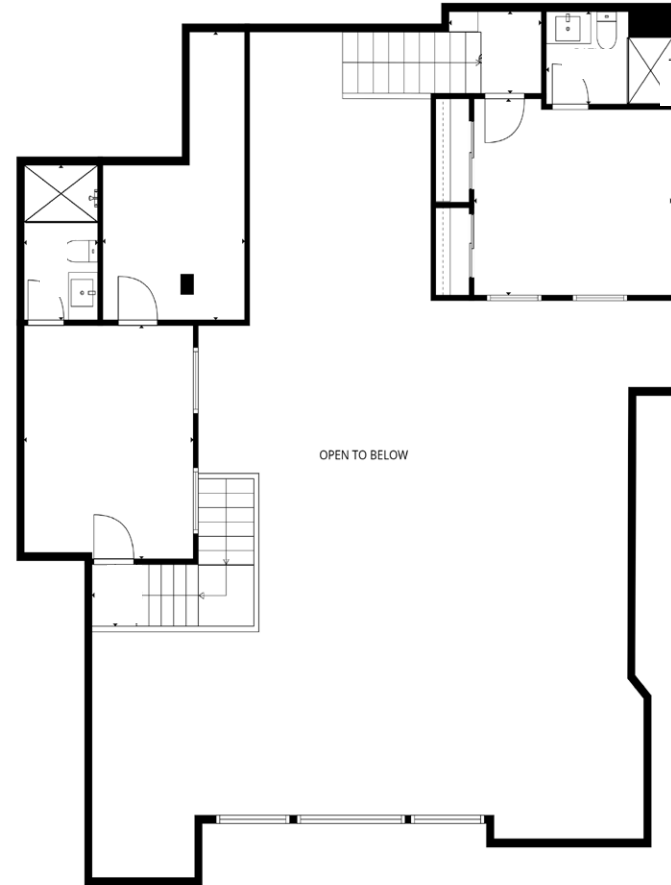
865 FLORIDA STREET

Floor Plans

Ground Floor & Mezzanine
+/- 2,711 Square Feet



GROUND FLOOR



MEZZANINE

865 FLORIDA STREET

LOCATION OVERVIEW

Desirable Mission District location, walkable to nearby amenities, public transportation and to surrounding neighborhoods.



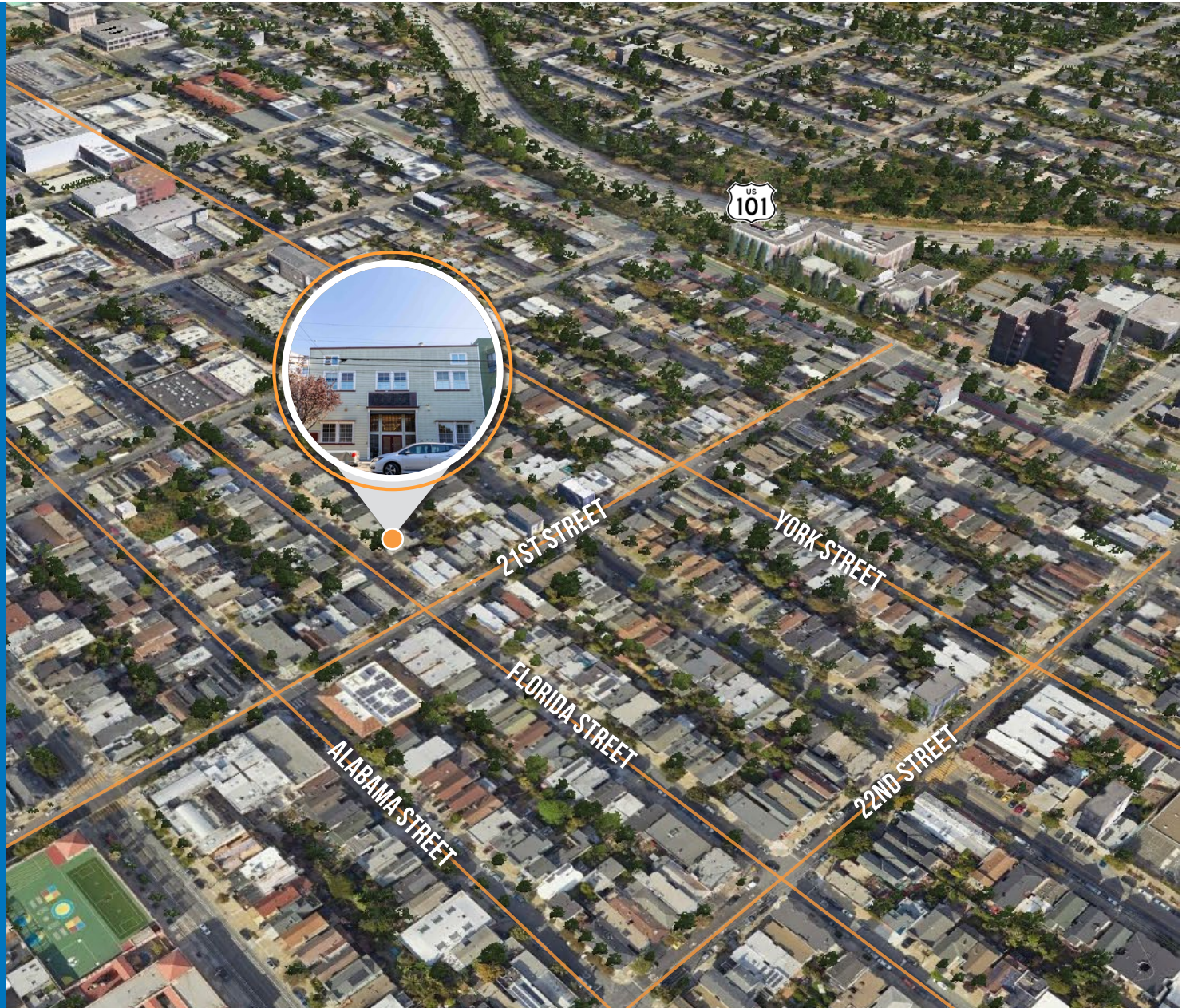
03 MIN to Bryant St Muni
12 MIN to Franklin Square
21 MIN to 16th St. BART



06 MIN to Potrero Hill
11 MIN to Hayes Valley
14 MIN to Financial District

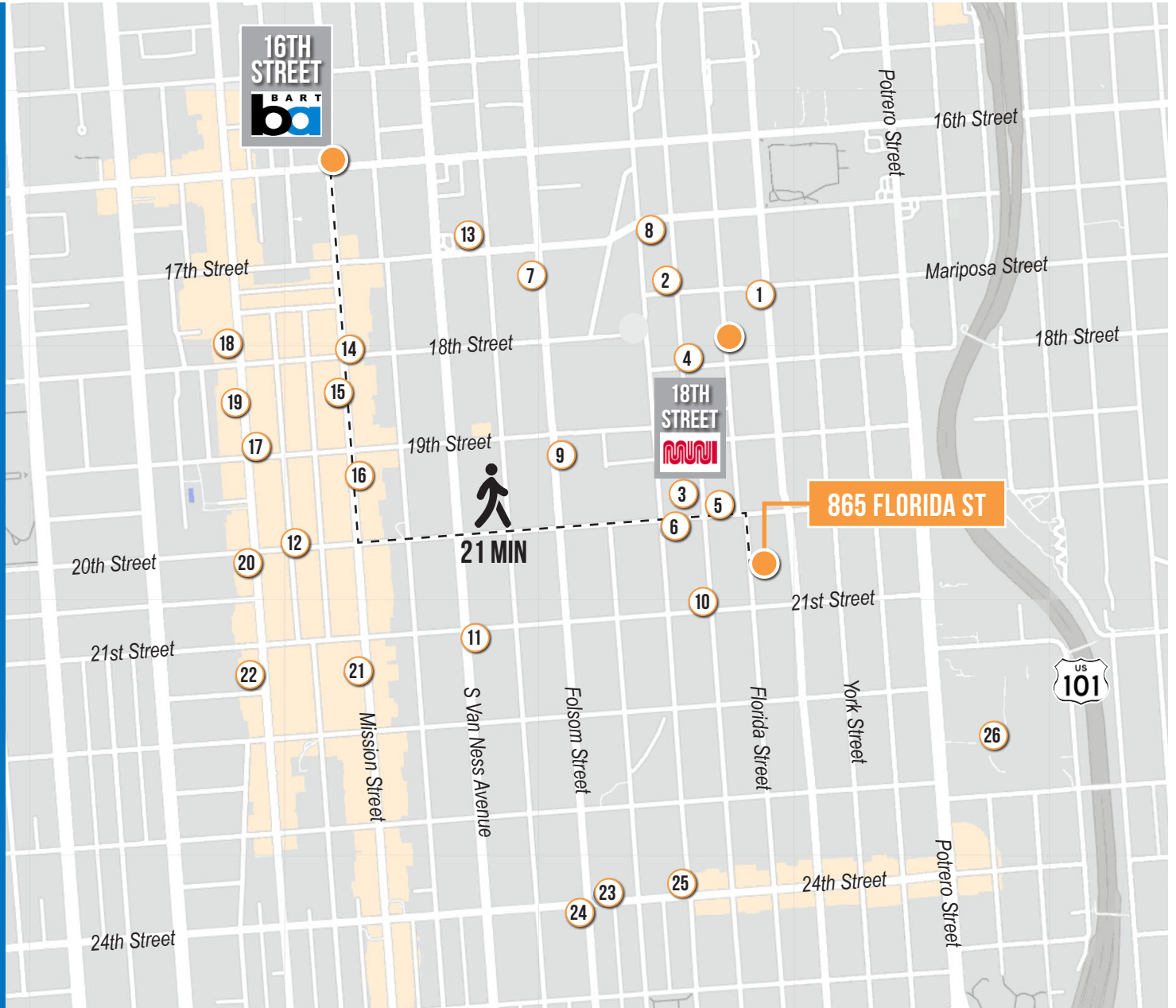


06 MIN to 101 On-Ramp
07 MIN to 280 On-Ramp
08 MIN to 80 On-Ramp



NEARBY AMENITIES

- 1..... Poesia
- 2..... The Archery
- 3..... Sightglass
- 4..... Tartine Manufactory
- 5..... Trick Dog
- 6..... Flour + Water
- 7..... Stable Cafe
- 8..... Gus's Community Market
- 9..... The Homestead
- 10..... Bon, Nene
- 11..... Limón
- 12..... Garden Creamery
- 13..... Mission Bowling Club
- 14..... Grand Mission Donuts
- 15..... Mission Chinese Food
- 16..... Cha Cha Cha
- 17..... Etcetera Wine Bar
- 18..... Taishoken SF
- 19..... Dandelion Chocolate
- 20..... Smitten Ice Cream
- 21..... Foreign Cinema
- 22..... Ritual Coffee Roasters
- 23..... Haus Coffee
- 24..... Philz Coffee
- 25..... Humphry Slocombe
- 26..... Zuckerberg SF General



865 FLORIDA STREET



STABLE CAFE



PENNY ROMA



POESIA



TARTINE



SIGHTGLASS COFFEE

865 FLORIDA STREET



Corp. Lic. 01112906
www.tcpre.com

GEORGE FARLEY

C 415.994.5767

george@tcpre.com DRE # 02233755

ETHAN MANN

C 415.990.9127

ethan@tcpre.com DRE # 02223262

This document has been prepared by Touchstone Commercial Partners for advertising and general information only. Touchstone Commercial Partners makes no guarantees, representations or warranties of any kind, expressed or implied, regarding the information including, but not limited to, warranties of content, accuracy and reliability. Any interested party should undertake their own inquiries as to the accuracy of the information. Touchstone Commercial Partners excludes unequivocally all inferred or implied terms, conditions and warranties arising out of this document and excludes all liability for loss and damages arising there from. This publication is the copyrighted property of Touchstone Commercial Partners and/or its licensor(s). ©2026. All rights reserved.