

FOR SUBLEASE

14901 RINALDI ST

*Newly Built-Out Medical Office for
Sublease in Mission Hills, CA*



14901 RINALDI ST, MISSION HILLS, CA 91345

km Kidder
Mathews



Kidder Mathews is pleased to present 14901 Rinaldi St, a newly built-out medical office building available for sublease.

ADDRESS 14901 Rinaldi St
Mission Hills, CA 91345

AVAILABLE SF ±1,200 RSF

RENTAL RATE \$4.00/FSG

OFFICE ROOMS 3 + 1 Exam room

PROPERTY HIGHLIGHTS

Medical office available for immediate occupancy

Located directly across from Holy Cross Hospital Campus

Newly modern buildout with 3 offices, exam room, reception room, in-suite restroom and waiting area

Parking on site

Excellent accessibility to the I-405, I-5, & SR-118 fwys

14901 RINALDI ST

PROVIDENCE HOLY CROSS
MEDICAL CAMPUS - MISSION HILLS

HOLY CROSS
MEDICAL BUILDING

OPTUM
MEDICAL BUILDING

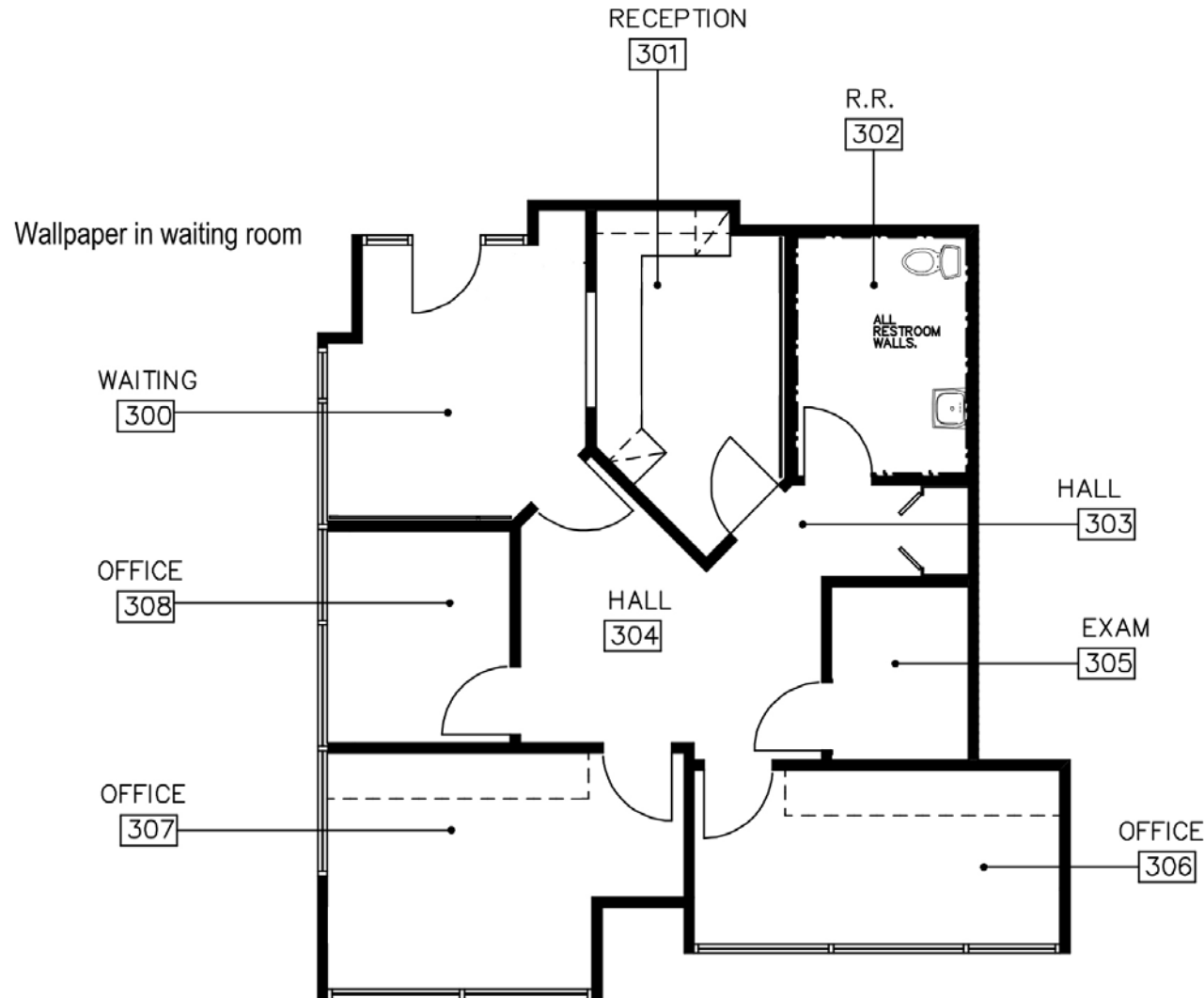
14901
RINALDI ST



LOCATED *ACROSS FROM*
HOLY CROSS PROVIDENCE
MEDICAL CAMPUS

14901 Rinaldi St's proximity to Holy Cross Providence Medical Campus & Holy Cross Medical Building guarantees high patient traffic, making this a top-tier location for prospective tenants.

SUITE 310 FLOOR PLAN



±1,200 SF

AVAILABLE

\$4.00

LEASE RATE (FSG/MO)

NOW

AVAILABLE

14901 RINALDI ST

Exclusively listed by

PHIL PETRUSO

424.653.1851

phil.petruso@kidder.com

LIC N° 00780128

MICHAEL JONES

310.906.3272

michael.jones@kidder.com

LIC N° 00986586

HELEN TRAN

404.319.1688

helen.tran@kidder.com

LIC N° 02238650

KIDDER.COM

This information supplied herein is from sources we deem reliable. It is provided without any representation, warranty, or guarantee, expressed or implied as to its accuracy. Prospective Buyer or Tenant should conduct an independent investigation and verification of all matters deemed to be material, including, but not limited to, statements of income and expenses. Consult your attorney, accountant, or other professional advisor. All Kidder Mathews designs are the sole property of Kidder Mathews. Branded materials and layouts are not authorized for use by any other firm or person.

