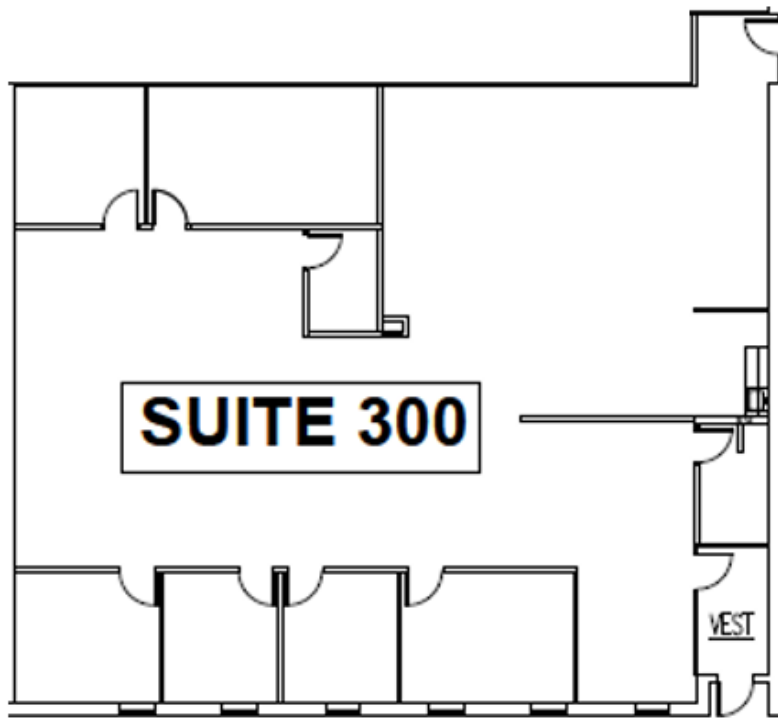


# SUITE 300 | 4,065 SF

4951 Indiana Ave | Lisle, IL



## SPACE NOTES

- 5 Private Offices
- 1 Conference Room
- 2 Call Rooms
- Open Space for Workstations



**John Millner, CCIM**  
630.480.6342  
[JMillner@VersaRES.com](mailto:JMillner@VersaRES.com)

**Ryan Moen, SIOR**  
630.480.6346  
[RMoen@VersaRES.com](mailto:RMoen@VersaRES.com)

1 MID AMERICA PLAZA, 3RD FLOOR  
OAKBROOK TERRACE, IL 60181  
630.480.6413

EXCLUSIVELY LISTED BY

**VERSA**  
REAL ESTATE SERVICES