

Eagle Highlands Business Center

6620-6640 Parkdale Place, Indianapolis, IN 46254

Medical/Office Space for Lease

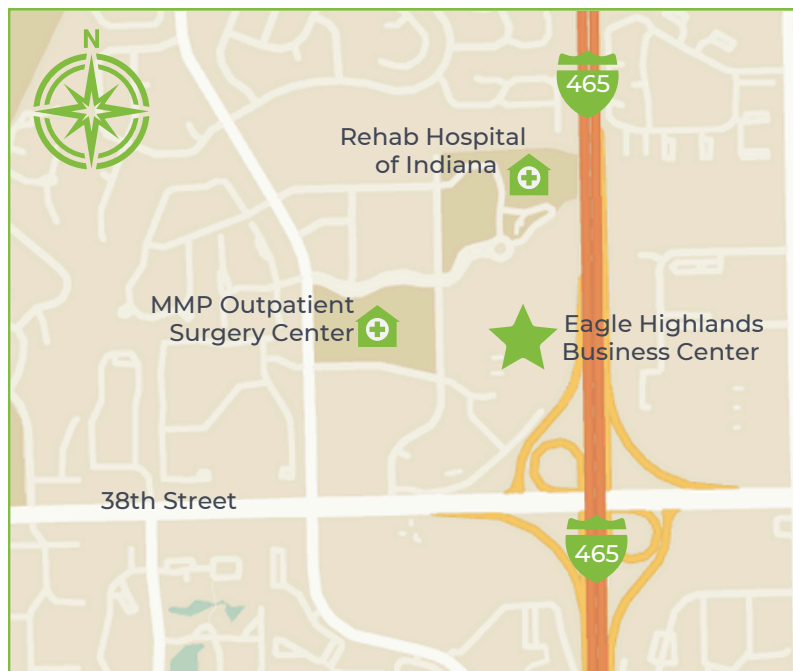


PROPERTY OVERVIEW

NOW AVAILABLE: A 2,306 SF suite located at 6620 Parkdale Place and a 3,531 SF suite located at 6640 Parkdale Place in the Eagle Highlands Business Center.

The Eagle Highlands Business Center consists of two office buildings, each containing approximately 35,000 SF. The buildings are separately addressed as 6620 and 6640 Parkdale Place.

Most of the tenants are in medical-related fields, serving other users in the Eagle Highlands Professional Center and greater Indianapolis area.



LEASING INFORMATION

Drew Deffner
Executive Vice President
Drew@alopg.com
C: 317.376.3897

Lora Moore
Executive Managing Director
Lora@alopg.com
C: 765.918.4999

ALO Property Group
9075 N Meridian St., Ste. 175
Indianapolis, IN 46260
O: 317.853.7500



Eagle Highlands Business Center

6620-6640 Parkdale Place, Indianapolis, IN 46254

Medical/Office Space for Lease



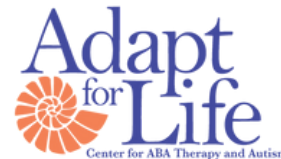
PROPERTY INFORMATION

- Abundant to your door parking in front and rear of building with exclusive access to individual suites
- Excellent location with access at 38th Street and I-465
- tenant storage and warehouse needs

DEMOGRAPHIC DETAILS

- Within a five-mile radius, \$90,421,398 was spent on health care last year alone.
- The market boasts a growing population of 188,607 within a five-mile radius.
- Large employee base with 42% of workers in the immediate area (one-mile radius) practicing in healthcare and education sectors.

KEY TENANTS

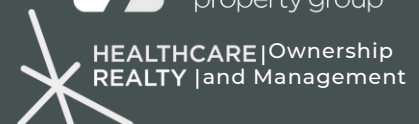


LEASING INFORMATION

Drew Deffner
Executive Vice President
Drew@alopg.com
C: 317.376.3897

Lora Moore
Executive Managing Director
Lora@alopg.com
C: 765.918.4999

ALO Property Group
9075 N Meridian St., Ste. 175
Indianapolis, IN 46260
O: 317.853.7500



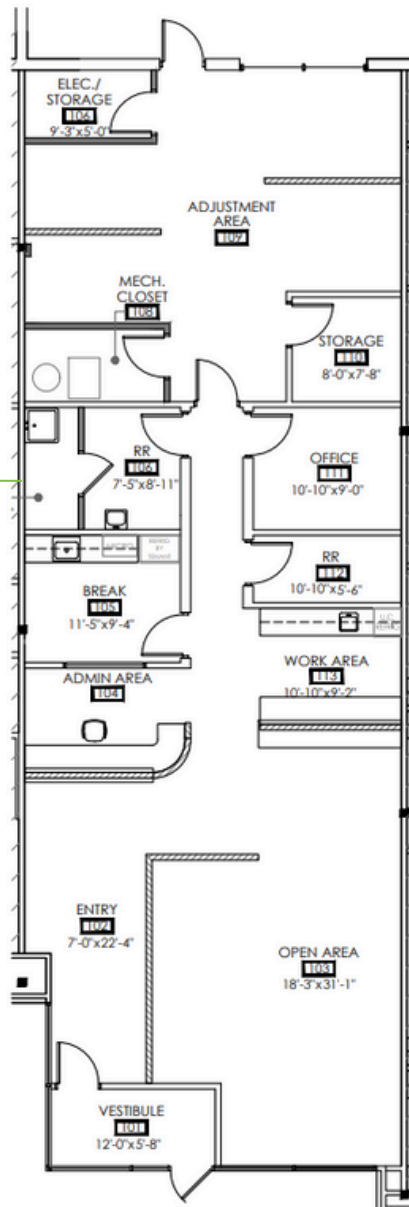
Eagle Highlands Business Center

6620-6640 Parkdale Place, Indianapolis, IN 46254

Availabilities

6620 Parkdale Place - Floor Plan

Suite J
2,306 RSF



LEASING INFORMATION

Drew Deffner
Executive Vice President
Drew@alopg.com
C: 317.376.3897

Lora Moore
Executive Managing Director
Lora@alopg.com
C: 765.918.4999

ALO Property Group
9075 N Meridian St., Ste. 175
Indianapolis, IN 46260
O: 317.853.7500

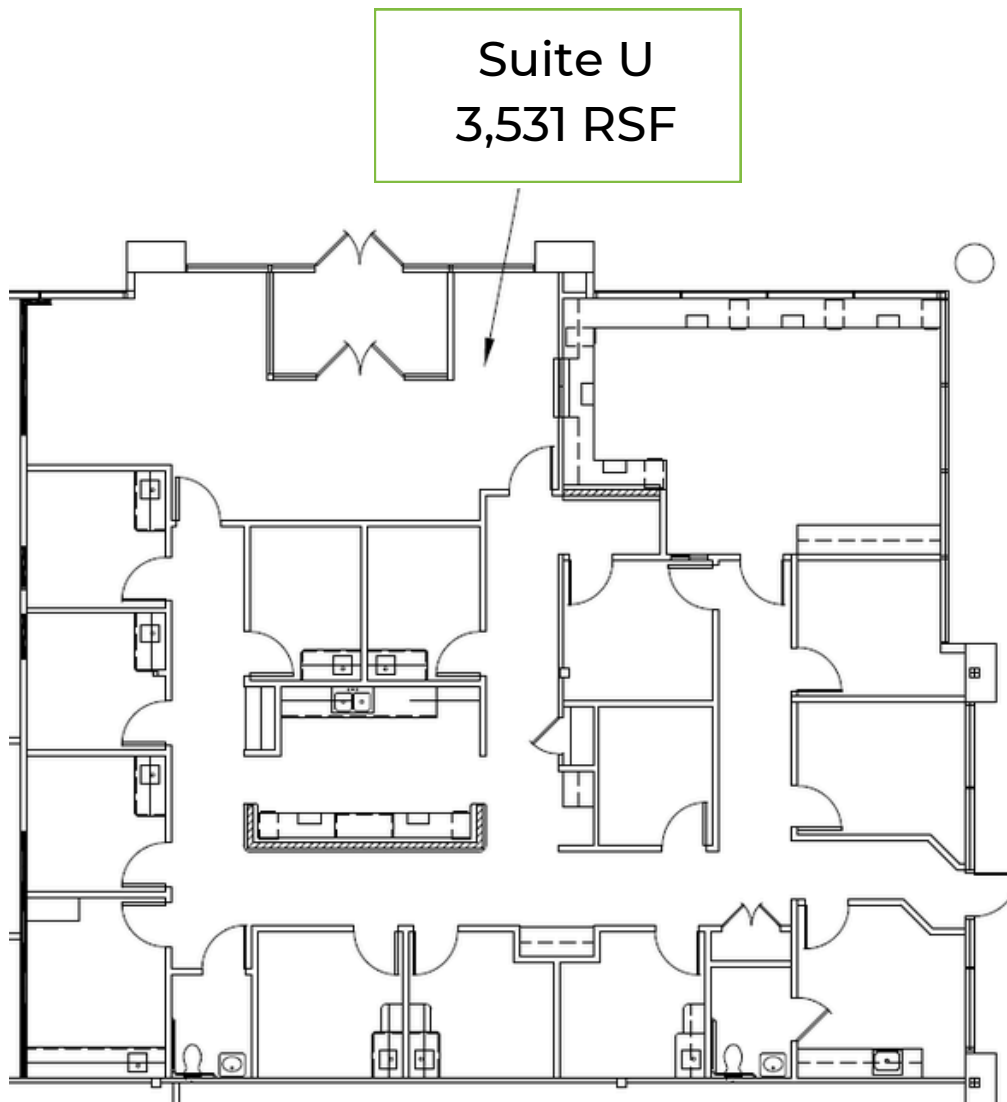


Eagle Highlands Business Center

6620-6640 Parkdale Place, Indianapolis, IN 46254

Availabilities

6640 Parkdale Place - Floor Plan



LEASING INFORMATION

Drew Deffner
Executive Vice President
Drew@alopg.com
C: 317.376.3897

Lora Moore
Executive Managing Director
Lora@alopg.com
C: 765.918.4999

ALO Property Group
9075 N Meridian St., Ste. 175
Indianapolis, IN 46260
O: 317.853.7500

ALO
property group

HEALTHCARE | Ownership
REALTY | and Management