

Available For
Sublease



62,598 SF
Available

16410 S John Lane Crossing

Lockport, Illinois 60441

PROPERTY HIGHLIGHTS

Modern precast building located in the I-355 corridor with quick access to the full interchange at 159th. Sublease runs through 6/30/2031. Low Will County taxes.



228,690 SF
TOTAL BUILDING



62,598 SF
AVAILABLE



OFFICE
4,057 SF



32'
CLEAR HEIGHT



400 AMPS
480 VOLT



6 FORKLIFT
CHARGING
STATIONS



8 EXTERIOR DOCKS
1 DID



IMMEDIATELY
AVAILABLE

Broker Contact Info

Mark Moran

+1 630 693 0656
mmoran@hiffman.com

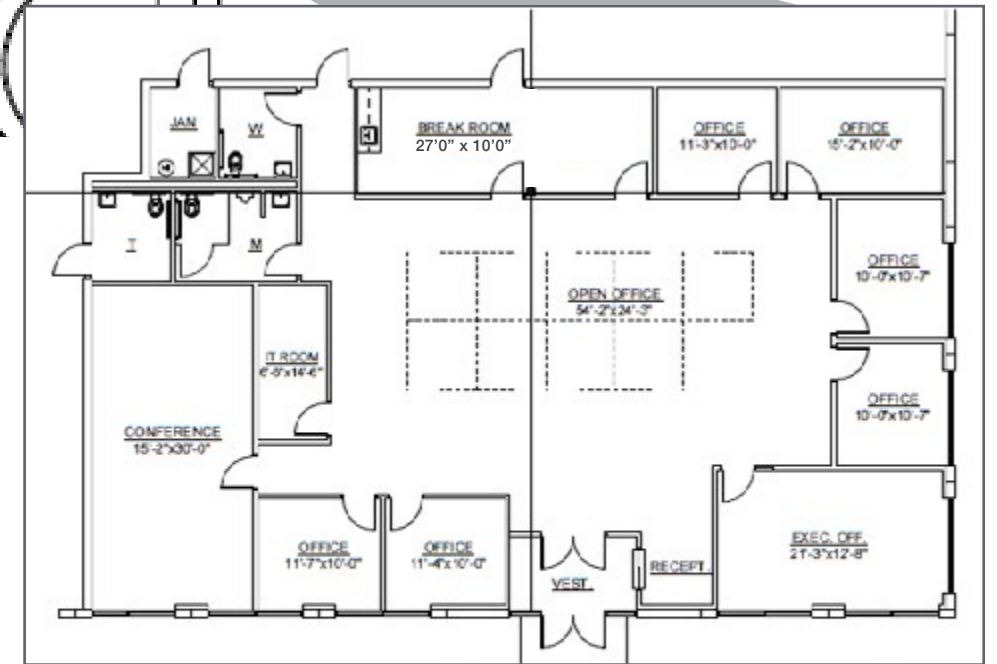
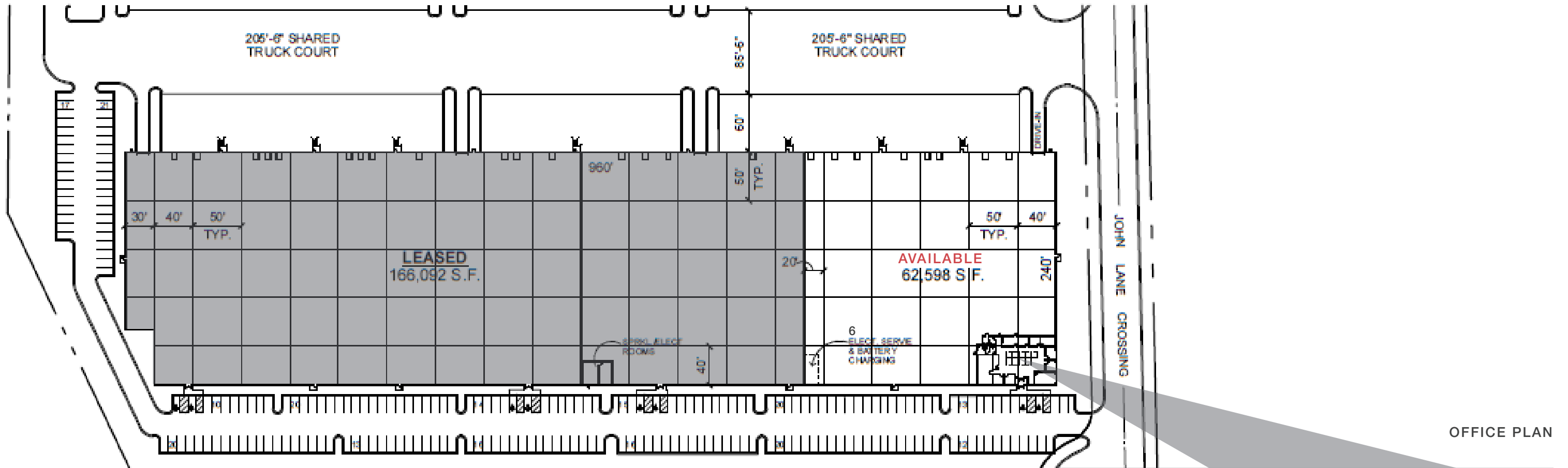
John Whitehead

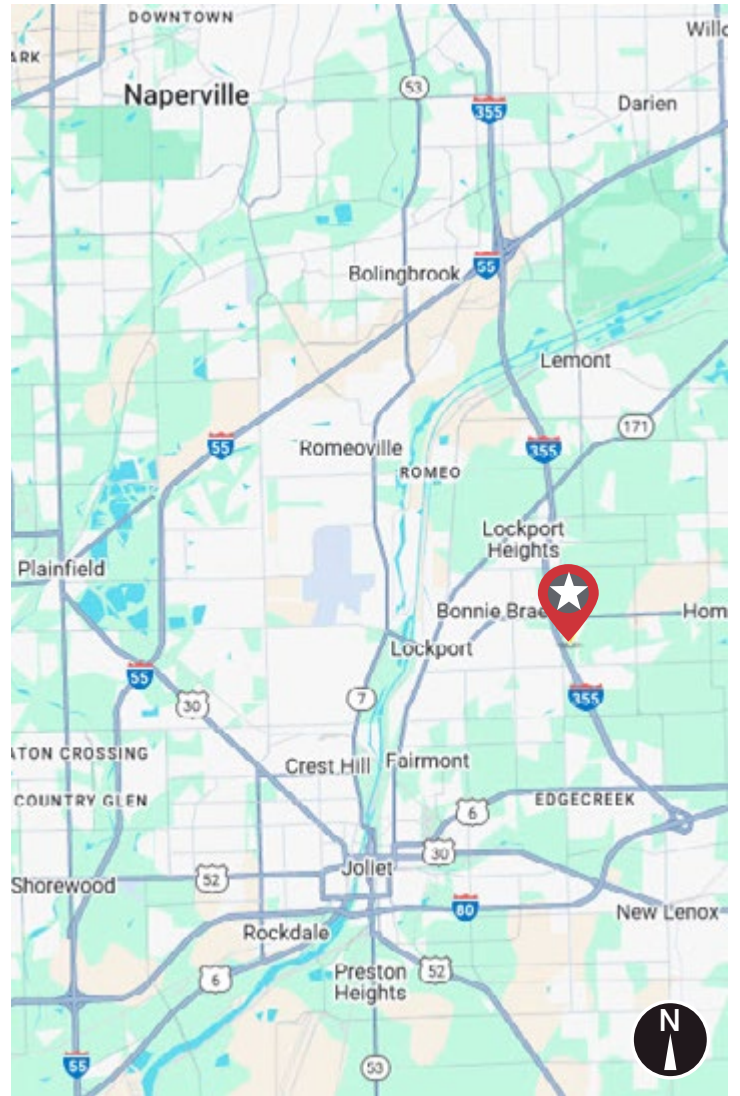
+1 630 693 0643
jwhitehead@hiffman.com

One Oakbrook Terrace
Suite 400
Oakbrook Terrace, Illinois 60181
+1 630 932 1234

NO WARRANTY OR REPRESENTATION, EXPRESS OR IMPLIED, IS MADE AS TO THE ACCURACY OF THE INFORMATION CONTAINED HEREIN, AND THE SAME IS SUBMITTED SUBJECT TO ERRORS, OMISSIONS, CHANGE OF PRICE, RENTAL OR OTHER CONDITIONS, PRIOR SALE, LEASE OR FINANCING, OR WITHDRAWAL WITHOUT NOTICE, AND OF ANY SPECIAL LISTING CONDITIONS IMPOSED BY OUR PRINCIPALS NO WARRANTIES OR REPRESENTATIONS ARE MADE AS TO THE CONDITION OF THE PROPERTY OR ANY HAZARDS CONTAINED THEREIN ARE ANY TO BE IMPLIED.

SITE PLAN





CALL A NAI HIFFMAN BROKER TODAY!

Mark Moran

+1 630 693 0656
mmoran@hiffman.com

John Whitehead

+1 630 693 0643
jwhitehead@hiffman.com

One Oakbrook Terrace
Suite 400
Oakbrook Terrace, Illinois 60181
+1 630 932 1234