

Desoto, Kansas - 95th & Lexington

Pad Sites Available

Intervet
\$895 Million
Expansion

Desoto
K-12
Schools

Huhtamaki
450 Employees

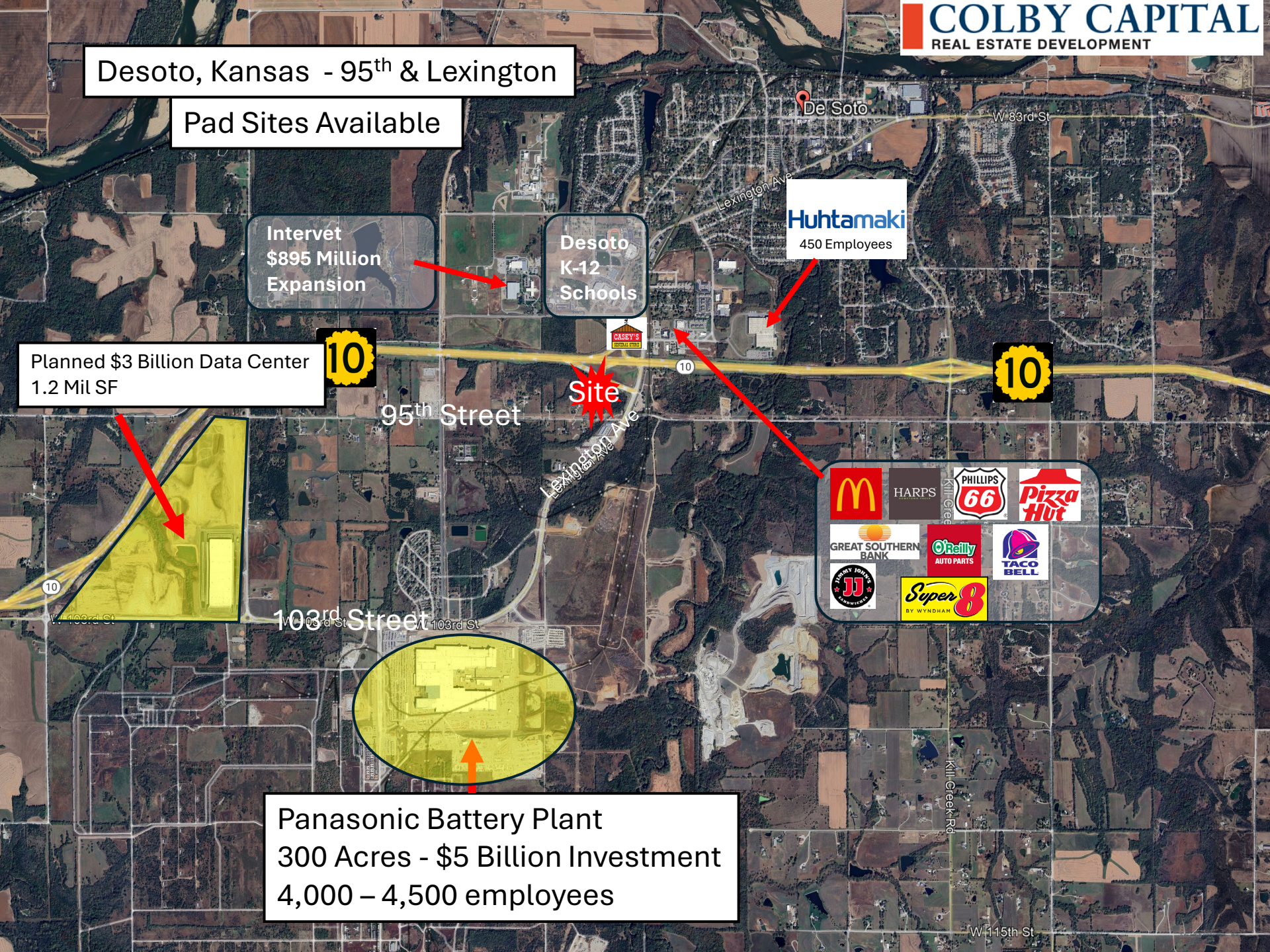
Planned \$3 Billion Data Center
1.2 Mil SF



Site



Panasonic Battery Plant
300 Acres - \$5 Billion Investment
4,000 – 4,500 employees



Planned Redevelopment of K-10 Hwy

Intervet
\$895 Million
Expansion

Desoto K-12 Schools

91st St



HARPS



Commerce Dr

Huhtamaki

Planned New Interchange

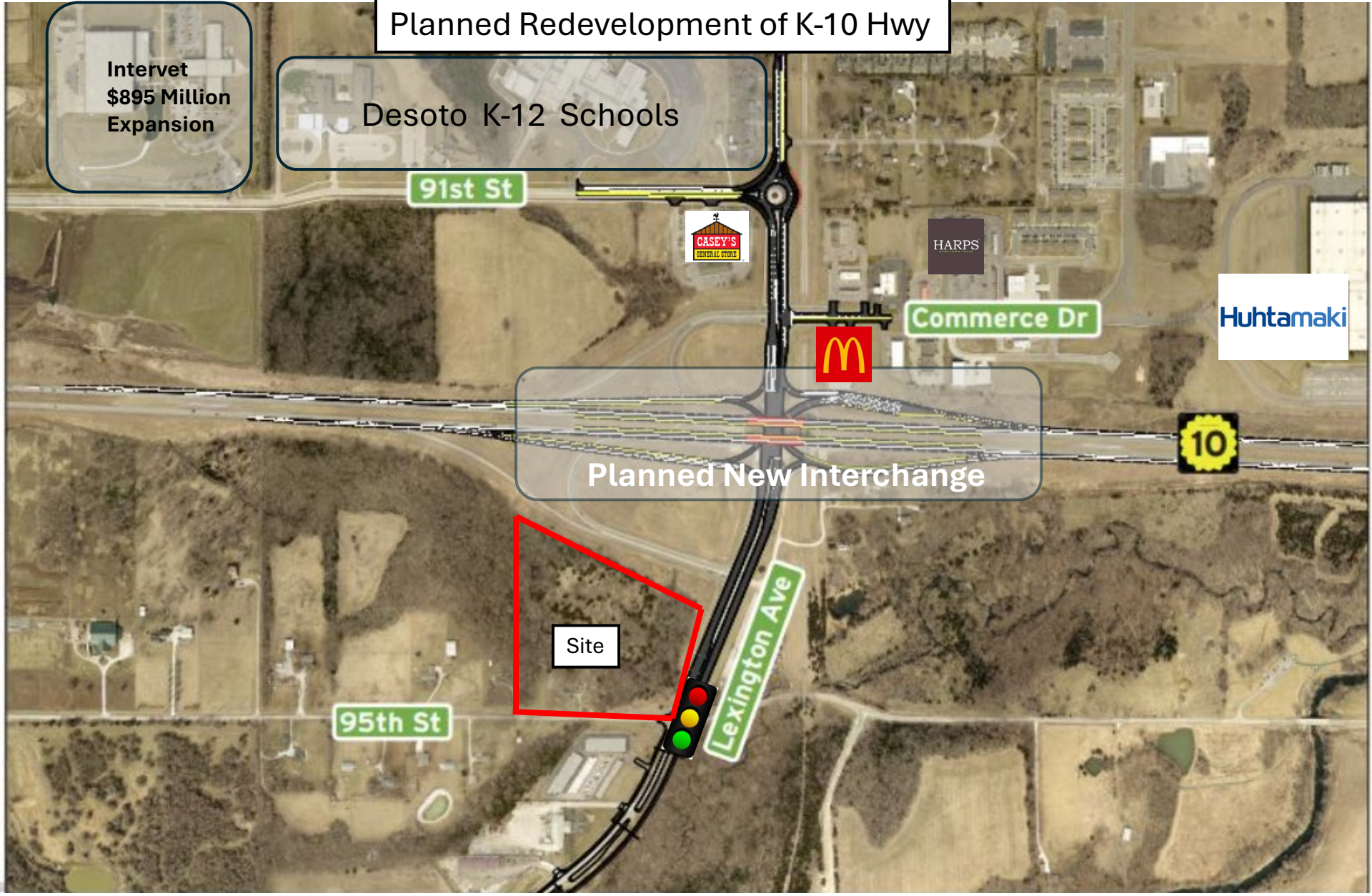


Site

95th St



Lexington Ave



Planned 95th Street Improvements

