



**Medical, Dental, or Office Condo**



**Ample, convenient parking at the front door**

- ✓ Suite 204: ±3,679 SF
- ✓ Total building: ±30,980 SF
- ✓ Built in 1994
- ✓ Zoned GB-S
- ✓ Located within 5 minutes of Forsyth Medical Center - Novant Health

**Lease rate: \$18.50/PSF  
plus utilities & janitorial**

**Cindy Christopher**

336.926.1411

1080 West Fourth Street, Winston-Salem, NC

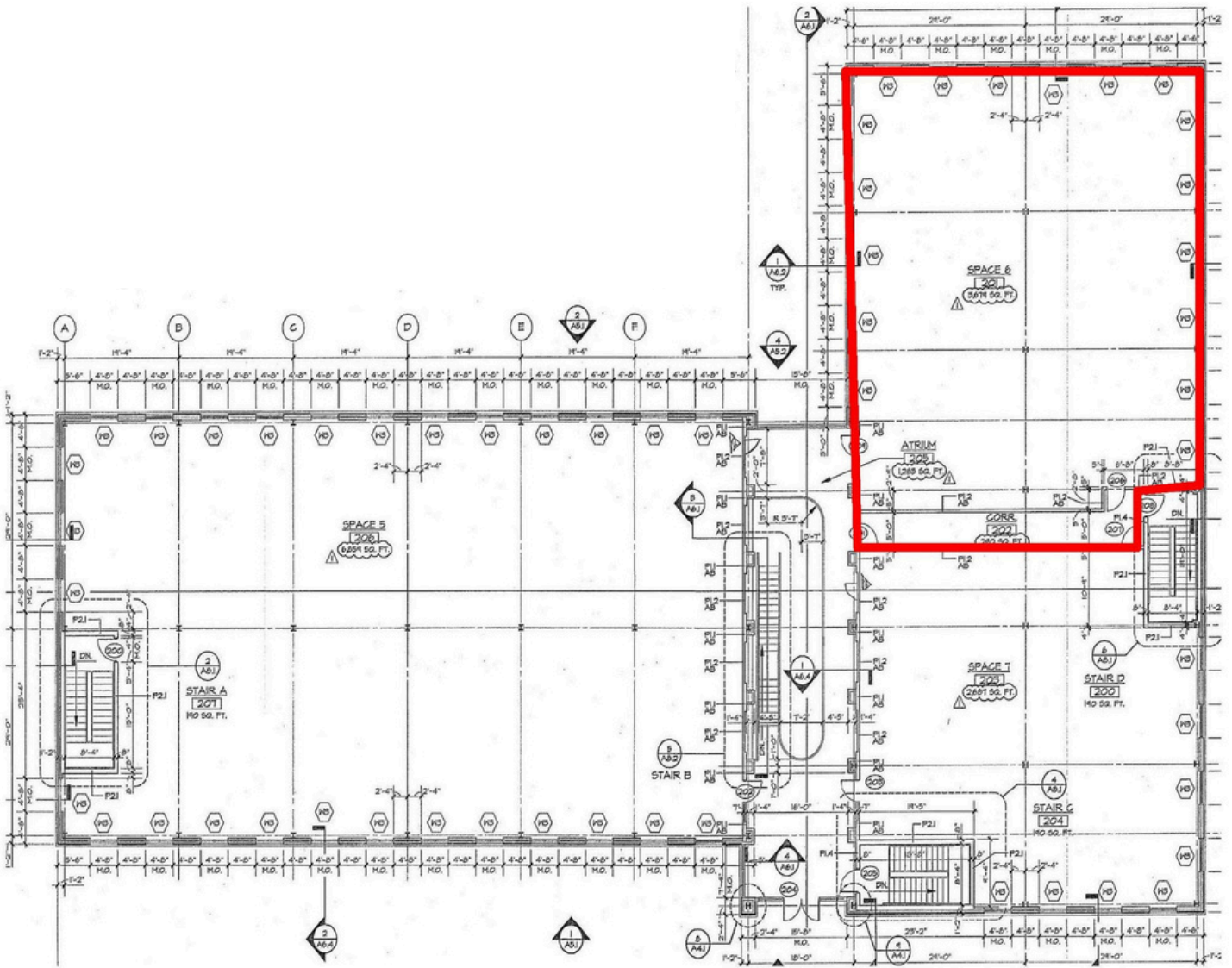
Cindy@ChristopherCommercialNC.com



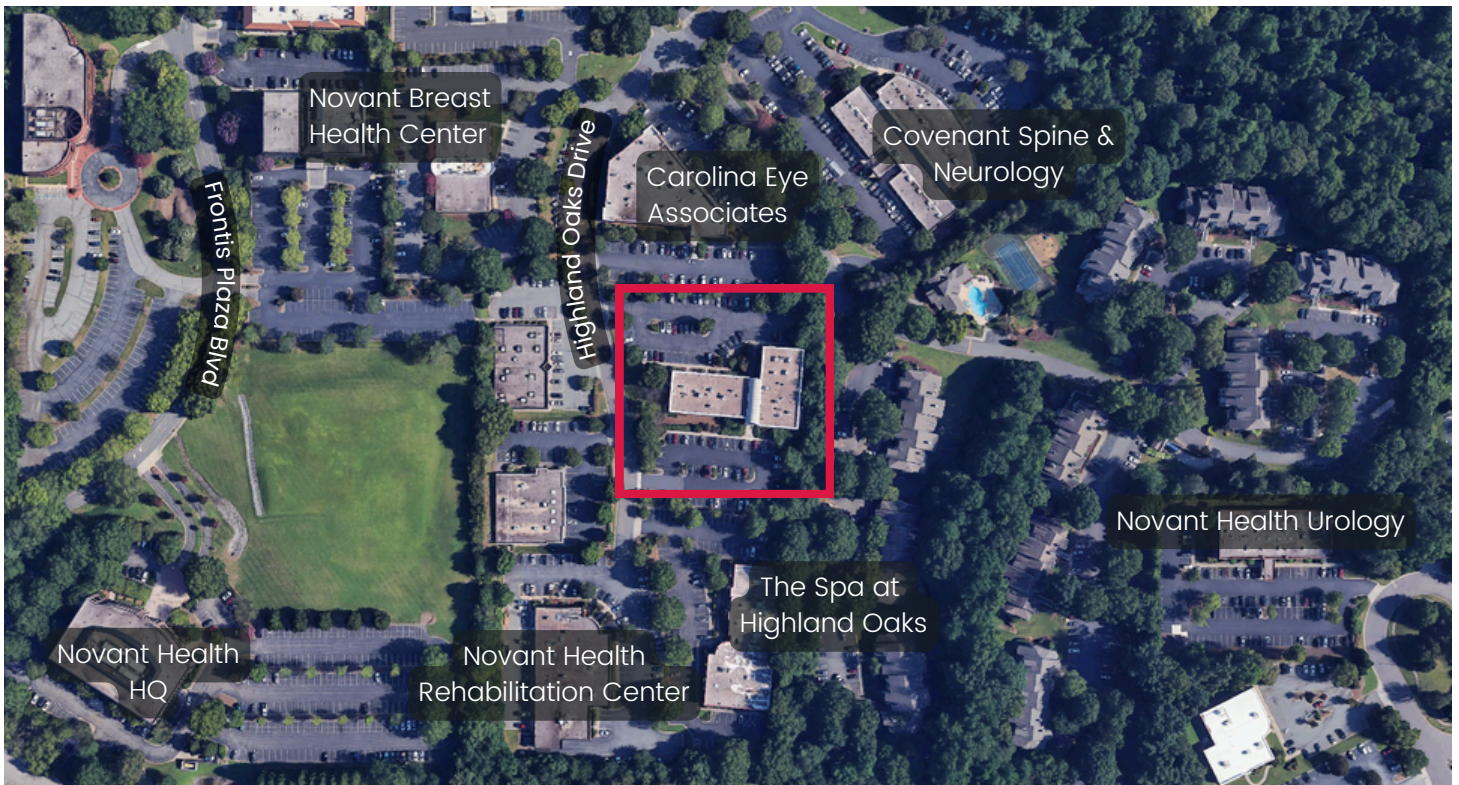
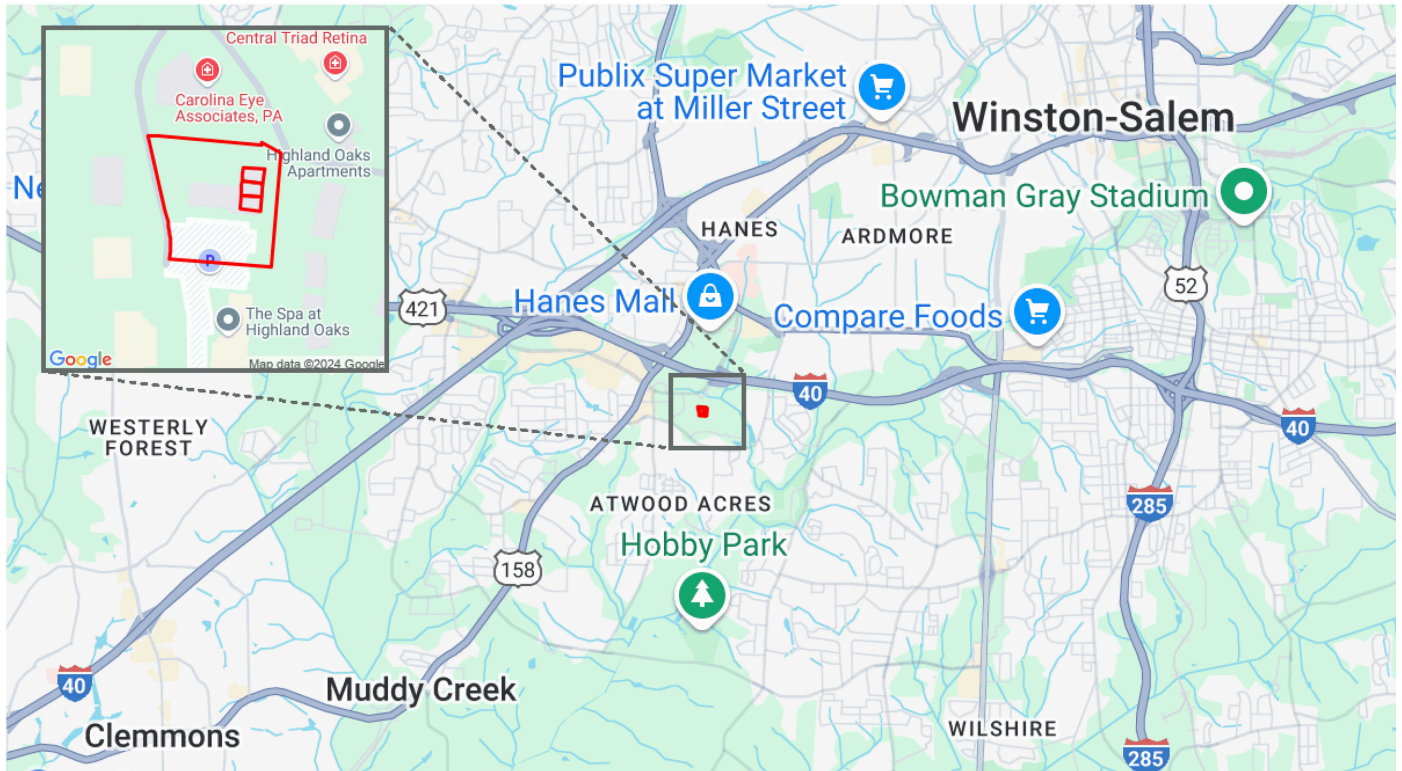
# PHOTOS







# MAPS



 1080 West Fourth Street, Winston-Salem, NC

 [www.ChristopherCommercialNC.com](http://www.ChristopherCommercialNC.com)

**Christopher  
Commercial**  
COMMERCIAL REAL ESTATE