

| FOR SUBLEASE



PROPERTY DETAILS

1982 W. Pleasant Grove Blvd.
Pleasant Grove, UT 84062

- Lease Rate: \$21.17/RSF, NNN
- Suite E & F Containing 4,613 SF
- Like new improvements
- Available immediately
- Great layout with offices, open area, conference rooms and breakroom
- Walking distance to numerous restaurants
- Immediately off Pleasant Grove I-15 exit
- Abundant parking
- Lease Expiration- March 31, 2030

NEWMARK

MOUNTAIN WEST

COLLIN PERKINS

cperkins@newmarkmw.com

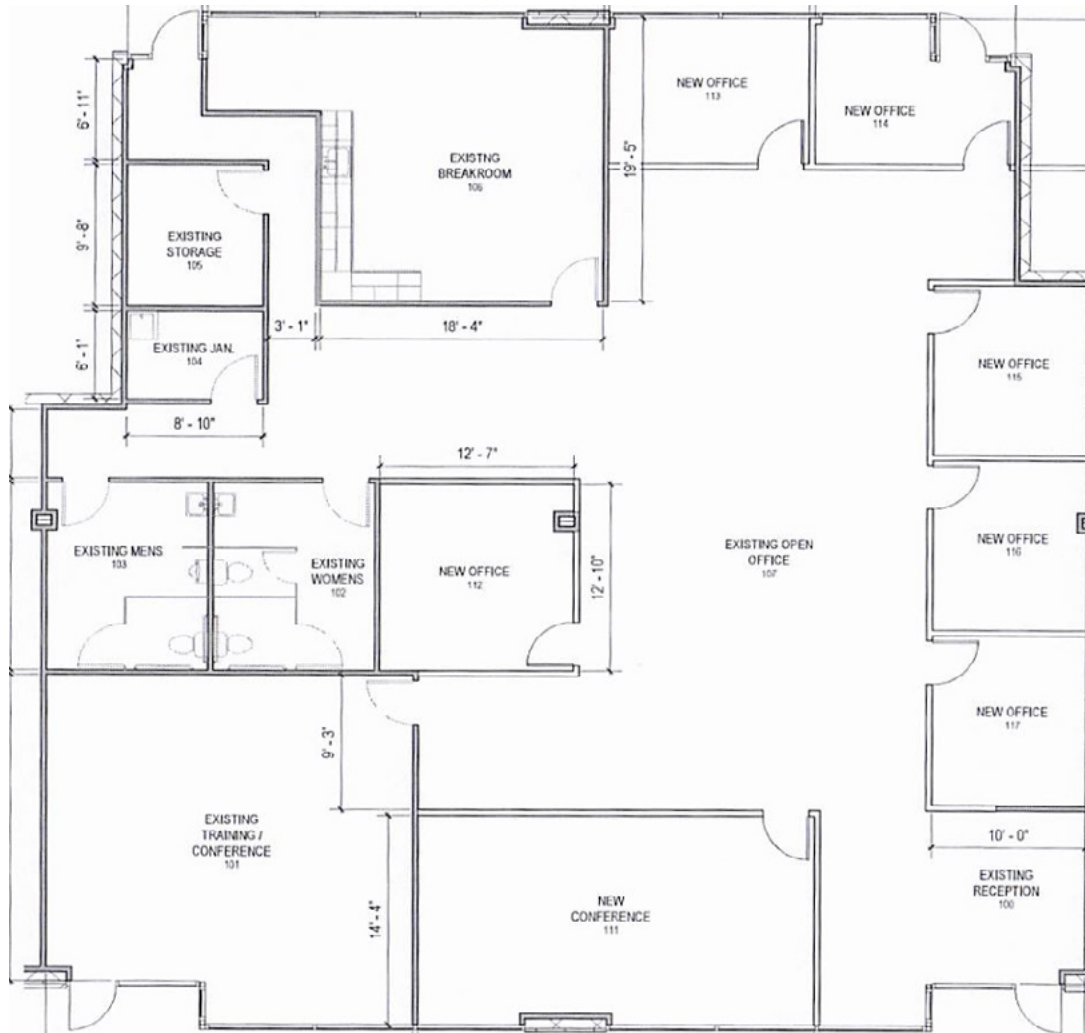
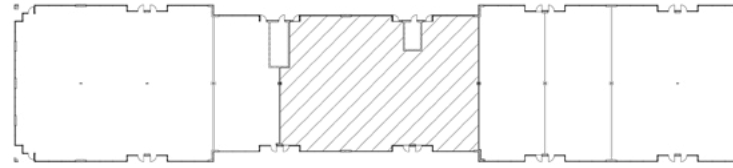
direct 801.604.0064

[View Profile](#)

**FULL SERVICE
COMMERCIAL REAL ESTATE**
2015 West Grove Parkway, Suite J
Pleasant Grove, UT 84062
Office 385.233.9140
www.newmarkmw.com

SITE PLAN

KEY PLAN
NOT TO SCALE



COLLIN PERKINS
cperkins@newmarkmw.com
direct 801.604.0064
[View Profile](#)

FULL SERVICE
COMMERCIAL REAL ESTATE
2015 West Grove Parkway, Suite J
Pleasant Grove, UT 84062
Office 385.233.9140
www.newmarkmw.com



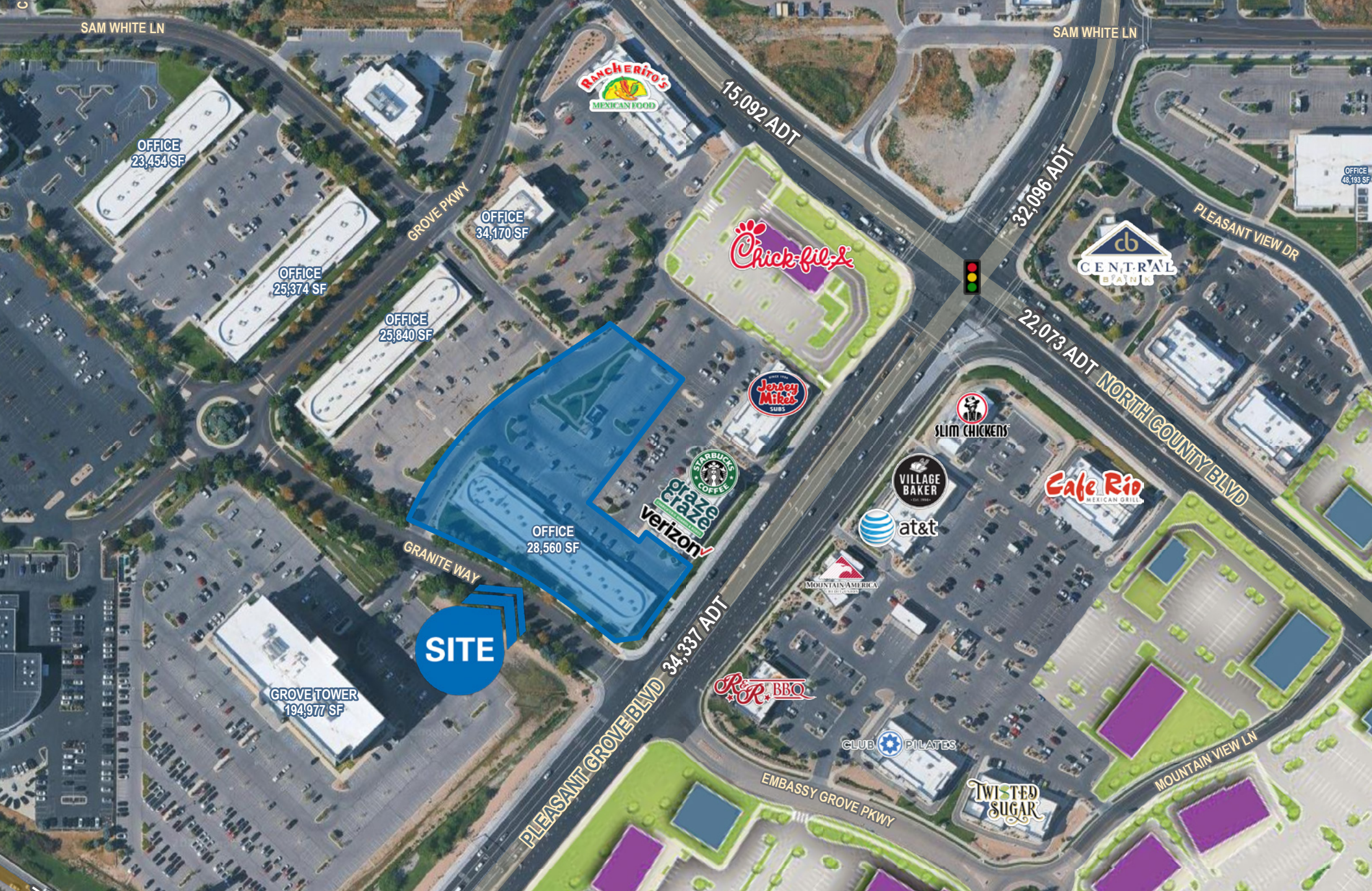
NEWMARK

 MOUNTAIN WEST

COLLIN PERKINS
cperkins@newmarkmw.com
direct 801.604.0064
[View Profile](#)



**FULL SERVICE
COMMERCIAL REAL ESTATE**
2015 West Grove Parkway, Suite J
Pleasant Grove, UT 84062
Office 385.233.9140
www.newmarkmw.com





COLLIN PERKINS
 cperkins@newmarkmw.com
 direct 801.604.0064
[View Profile](#)

**FULL SERVICE
 COMMERCIAL REAL ESTATE**
 2015 West Grove Parkway, Suite J
 Pleasant Grove, UT 84062
 Office 385.233.9140
www.newmarkmw.com