

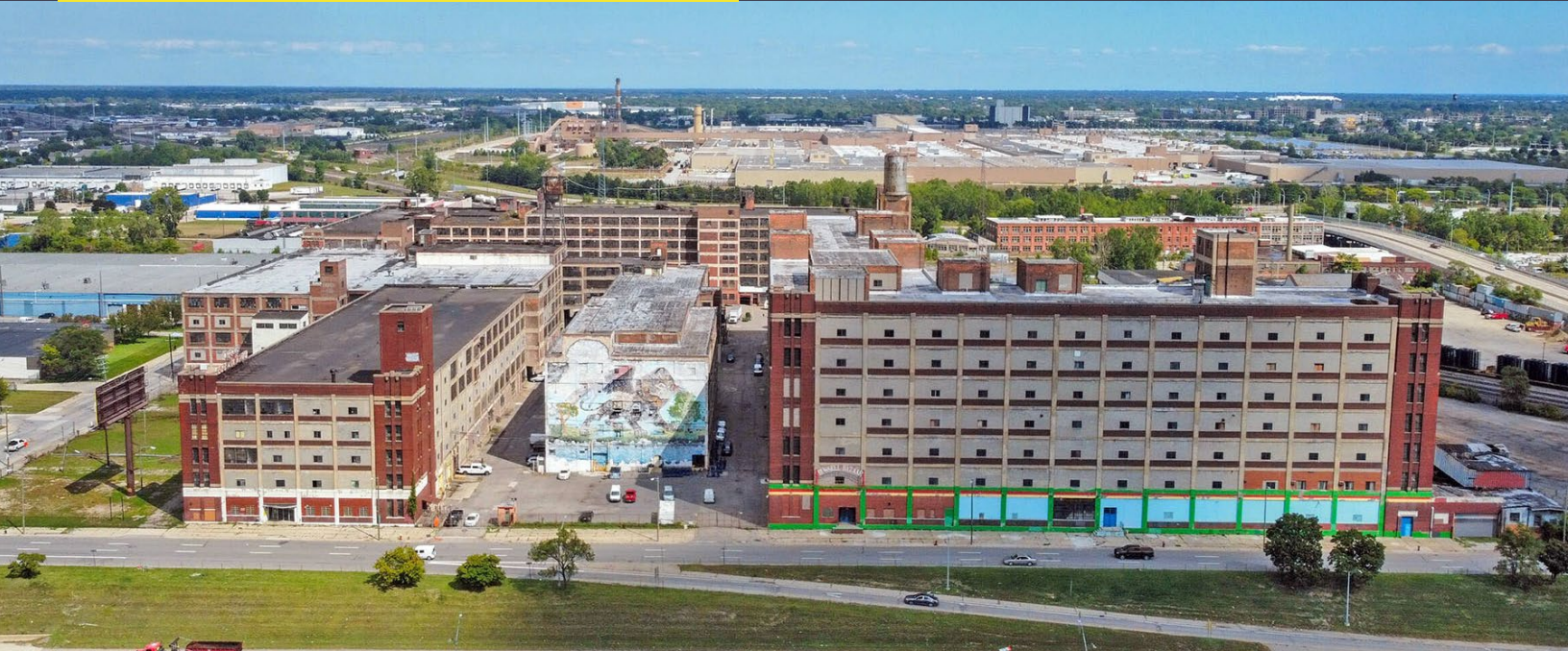
1600 CLAY STREET  
DETROIT, MICHIGAN

INDUSTRIAL FOR LEASE  
600 - 1,000,000 Sq. Ft. Available



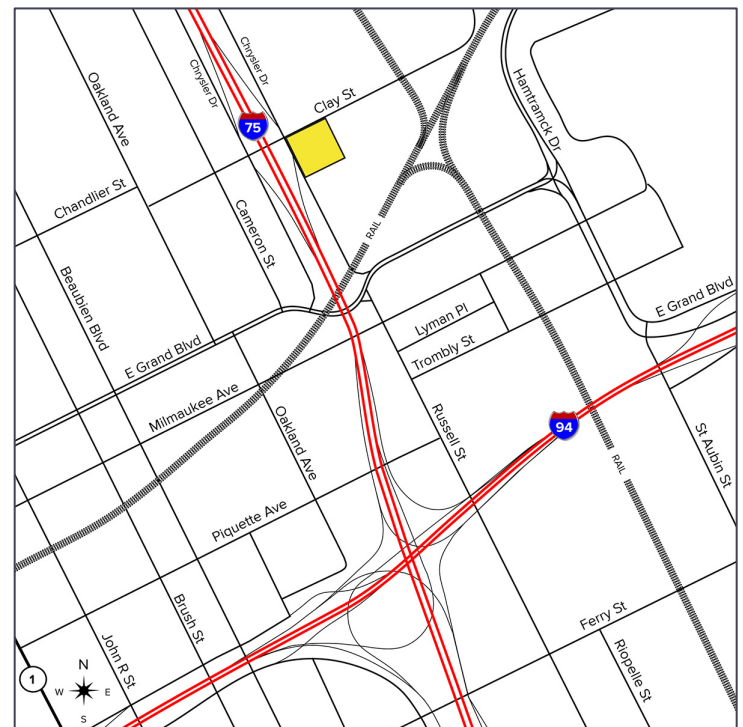
**SIGNATURE  
ASSOCIATES**  
KNOW SIGNATURE | KNOW RESULTS

## RUSSELL INDUSTRIAL CENTER



### PROPERTY FEATURES

- 600 - 1,000,000 sq. ft. available
- Office area to-suit
- 2,200,000 sq. ft. building situated on 19.6 acres
- 12'-22' clear height
- (10) truckwells
- Zoned M-4
- Gas heating
- 24/7 security
- Freight elevator access
- Historic complex located in the heart of Detroit's North End neighborhood
- Lease Rate: \$3.00 - \$5.00/sq. ft. Gross



For more information, please contact:

**JOE STACK**  
(248) 359 0615  
jstack@signatureassociates.com

**CHRIS MONSOUR**  
(248) 948 0107  
cmonsour@signatureassociates.com

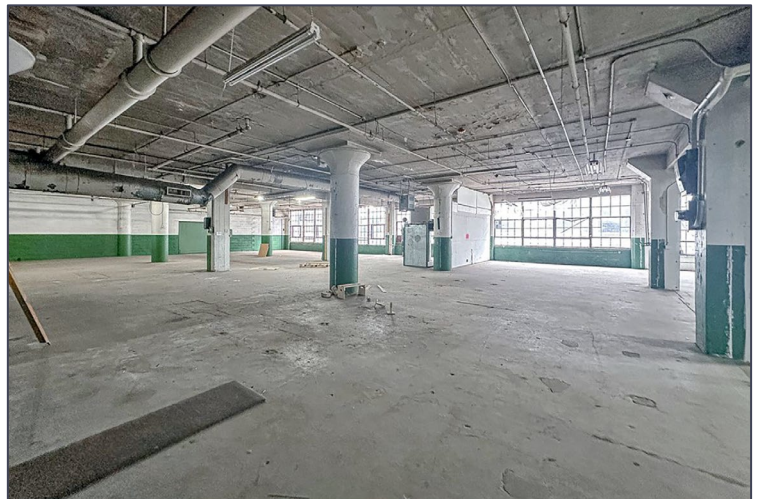
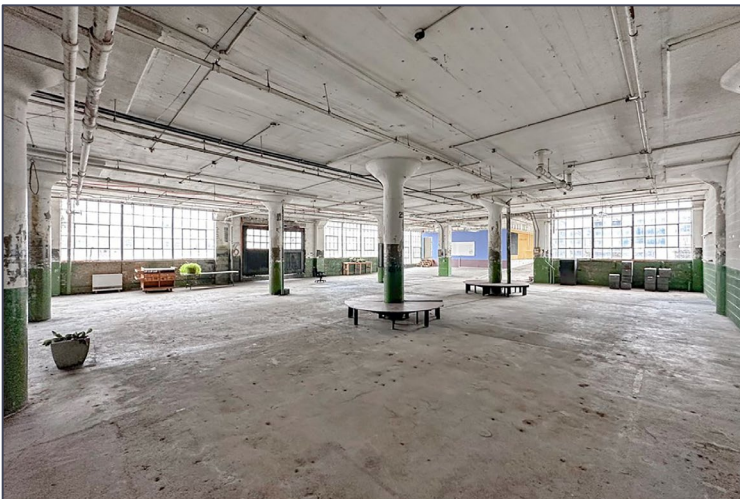
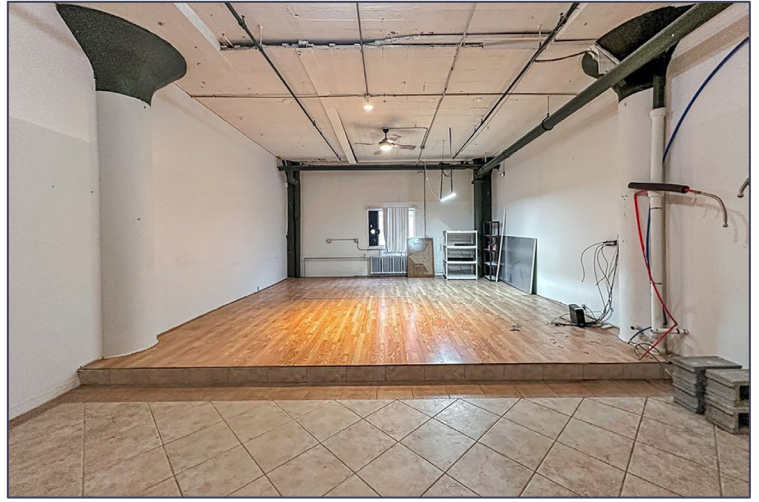
**SIGNATURE ASSOCIATES**  
One Towne Square, Suite 1200  
Southfield, MI 48076  
www.signatureassociates.com

# 1600 Clay Street - Detroit, Michigan

## Industrial For Lease

600-1,000,000  
Square Feet  
AVAILABLE

### Interior Photos



For more information, please contact:

**JOE STACK**  
(248) 359 0615  
jstack@signatureassociates.com

**CHRIS MONSOUR**  
(248) 948 0107  
cmonsour@signatureassociates.com

**SIGNATURE ASSOCIATES**  
One Towne Square, Suite 1200  
Southfield, MI 48076  
www.signatureassociates.com

# 1600 Clay Street - Detroit, Michigan

## Industrial For Lease

600-1,000,000  
Square Feet  
AVAILABLE

Aerial



For more information, please contact:

**JOE STACK**  
(248) 359 0615  
jstack@signatureassociates.com

**CHRIS MONSOUR**  
(248) 948 0107  
cmonsour@signatureassociates.com

**SIGNATURE ASSOCIATES**  
One Towne Square, Suite 1200  
Southfield, MI 48076  
www.signatureassociates.com

# 1600 Clay Street - Detroit, Michigan

## Industrial For Lease

600-1,000,000  
Square Feet  
AVAILABLE

### Availability – Building 1 & 1A

UNIT	SF	PRICE
110	1,000	\$15/sft/yr or \$1,250/month
117	2,000	\$15/sft/yr or \$2,500/month
132		
133		
138	1,000	\$15/sft/yr or \$1,250/month
144	1,000	\$15/sft/yr or \$1,250/month
201		
209	1,400	\$12/sft/yr or \$1,400/month
210	1,000	\$12/sft/yr or \$1,000/month
211	1,400	\$12/sft/yr or \$1,400/month
219		
224		
225-A		
225-B		
226	12,000	Negotiable
227		
228	9,600	Negotiable
229		
230	8,000	Negotiable
302		
303	4,800	Negotiable
304	8,400	Negotiable
305		
306	6,000	Negotiable
307		
310	73,000	Negotiable
311	4,800	Negotiable
312		
313		
314		
315		

UNIT	SF	PRICE
400	4,800	Negotiable
401	8,000	Negotiable
407		
409		
411		
412		
413		
415		
419		
420	1,000	\$12/sft/yr or \$1,000/month
424		
426		
427		
430		
431		
432		
434	7,200	Negotiable
435	4,800	Negotiable
436	4,800	Negotiable
437	11,000	Negotiable
438	6,600	Negotiable
439	11,000	Negotiable
500	15,000	Negotiable
501	16,500	Negotiable
502		
503		
505		
506	14,400	Negotiable
507	10,000	Negotiable
508	10,000	Negotiable
509	7,200	Negotiable
510	8,000	Negotiable

For more information, please contact:

**JOE STACK**  
(248) 359 0615  
jstack@signatureassociates.com

**CHRIS MONSOUR**  
(248) 948 0107  
cmonsour@signatureassociates.com

**SIGNATURE ASSOCIATES**  
One Towne Square, Suite 1200  
Southfield, MI 48076  
www.signatureassociates.com

# 1600 Clay Street - Detroit, Michigan

## Industrial For Lease

600-1,000,000  
Square Feet  
AVAILABLE

### Availability – Building 2

UNIT	SF	PRICE
100	4,300	Negotiable
102	1,000	
103	800	
104	3,600	Negotiable
105	4,200	Negotiable
200-A	1,400	
201-B	600	
206	3,000	Negotiable
207	600	
210	1,000	
211	3,600	Negotiable
215	1,000	
216	1,000	
217	1,000	
222	1,000	
225	2,000	
302	800	
303	600	
309	800	\$12/sft/yr or \$800/month
312	2,200	\$12/sft/yr or \$2,200/month
315	600	
316	800	
317	600	
325	800	
327	800	
329	1,000	\$12/sft/yr or \$1,000/month
332	1,000	
334	2,500	Negotiable
335	1,600	\$12/sft/yr or \$1,600/month
4 <sup>TH</sup> FOOR	42,216	Negotiable
5 <sup>TH</sup> FLOOR	19,205	Negotiable

### Availability – Building 4

UNIT	SF	PRICE
3-Vacant		
3-Vacant		
3-Vacant		
3-Vacant		
3-Vacant	3,000	Negotiable
3-Vacant		
3-Vacant		
342		
5-Vacant	1,200	
5-Vacant		
5-Vacant		
5-Vacant	3,000	Negotiable
5-Vacant	1,500	
5-Vacant	1,500	
5-Vacant	1,500	
5-Vacant	2,400	Negotiable

For more information, please contact:

**JOE STACK**  
(248) 359 0615  
jstack@signatureassociates.com

**CHRIS MONSOUR**  
(248) 948 0107  
cmonsour@signatureassociates.com

**SIGNATURE ASSOCIATES**  
One Towne Square, Suite 1200  
Southfield, MI 48076  
www.signatureassociates.com