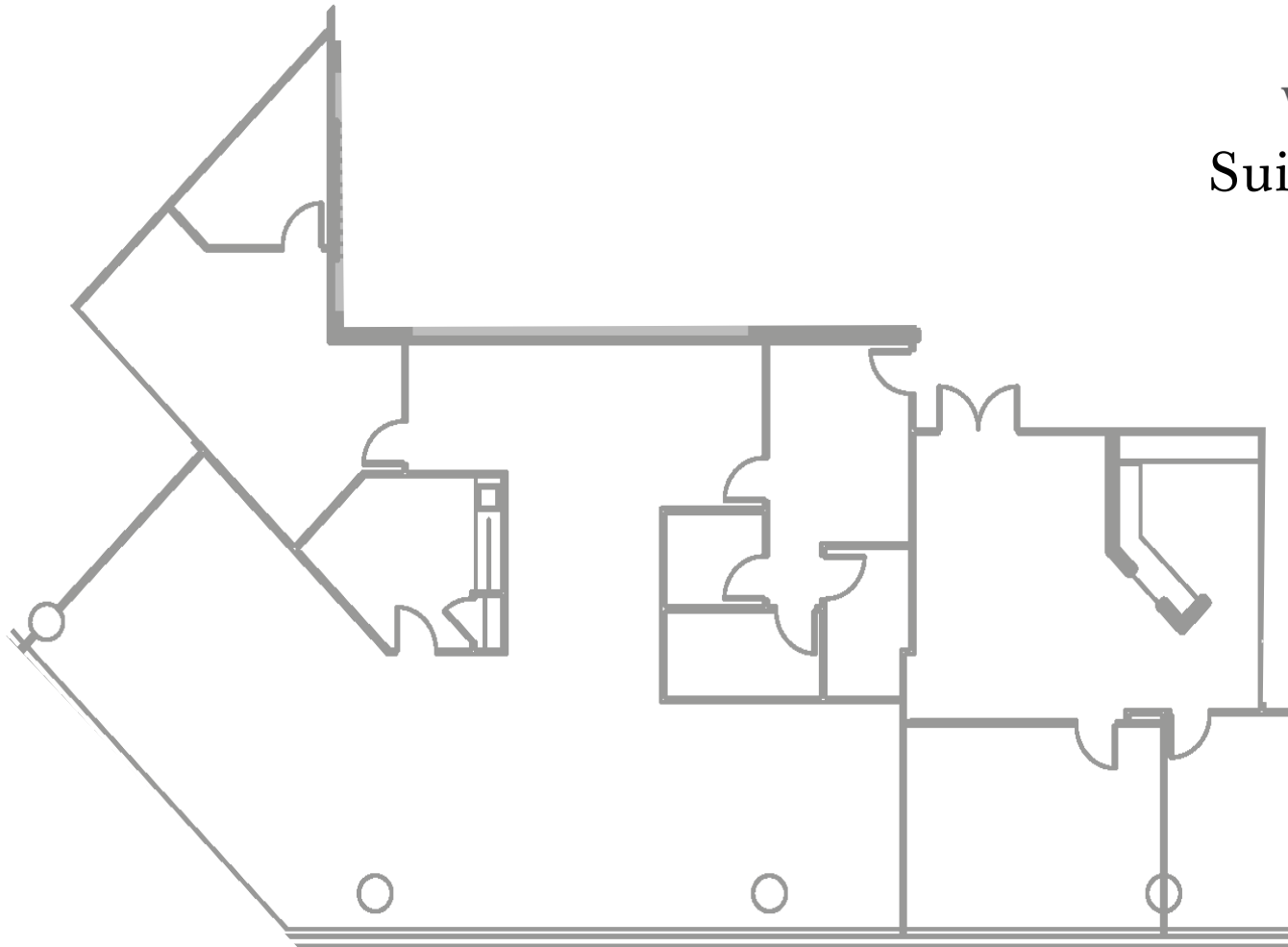


5|7|1|8

WESTHEIMER

Suites 1110 & 11120

4,211 SF



**PARKER BURKETT**

☎ 713.407.8716

✉ [Parker.Burkett@transwestern.com](mailto:Parker.Burkett@transwestern.com)

**KATY GRAGG**

☎ 713.407.8709

✉ [Katy.Gragg@transwestern.com](mailto:Katy.Gragg@transwestern.com)