

# DES MOINES CREEK

## Business Park West

405,680 SF

[www.DesMoinesCreekWest.com](http://www.DesMoinesCreekWest.com)

Now Under Construction

[View Live Cam](#)

FOR LEASE

1800 S 216<sup>th</sup> St  
Des Moines, WA

**NEWMARK**

**km** Kidder  
Mathews

**PANATTONI**

Port  
of Seattle

**THAD MALLORY, SIOR**  
thad.mallory@nmrk.com  
425-362-1410

**CHRIS CORR, SIOR**  
chris.corr@kidder.com  
206-248-7324

# SITE PLAN

## Building Details

**ADDRESS**

1800 S 216th St, Des Moines, WA

**TOTAL BUILDING SF**

405,680 SF

**OFFICE SF**

BTS

**CLEAR HEIGHT**

40'

**LOADING**

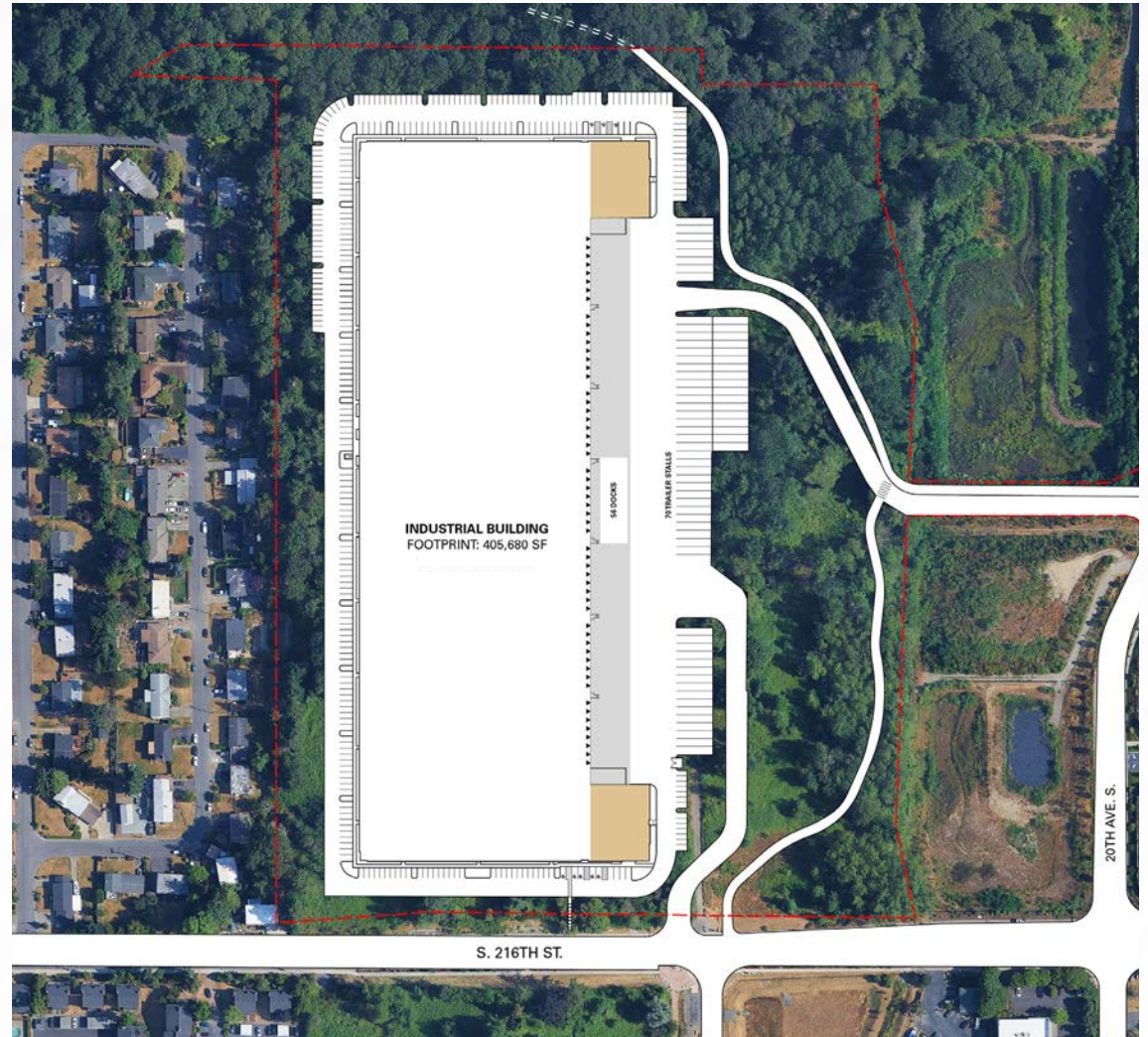
56 Dock High Doors  
2 Grade Level Doors

**PARKING**

313 Auto Stalls  
68 Trailer Stalls

## Property Highlights

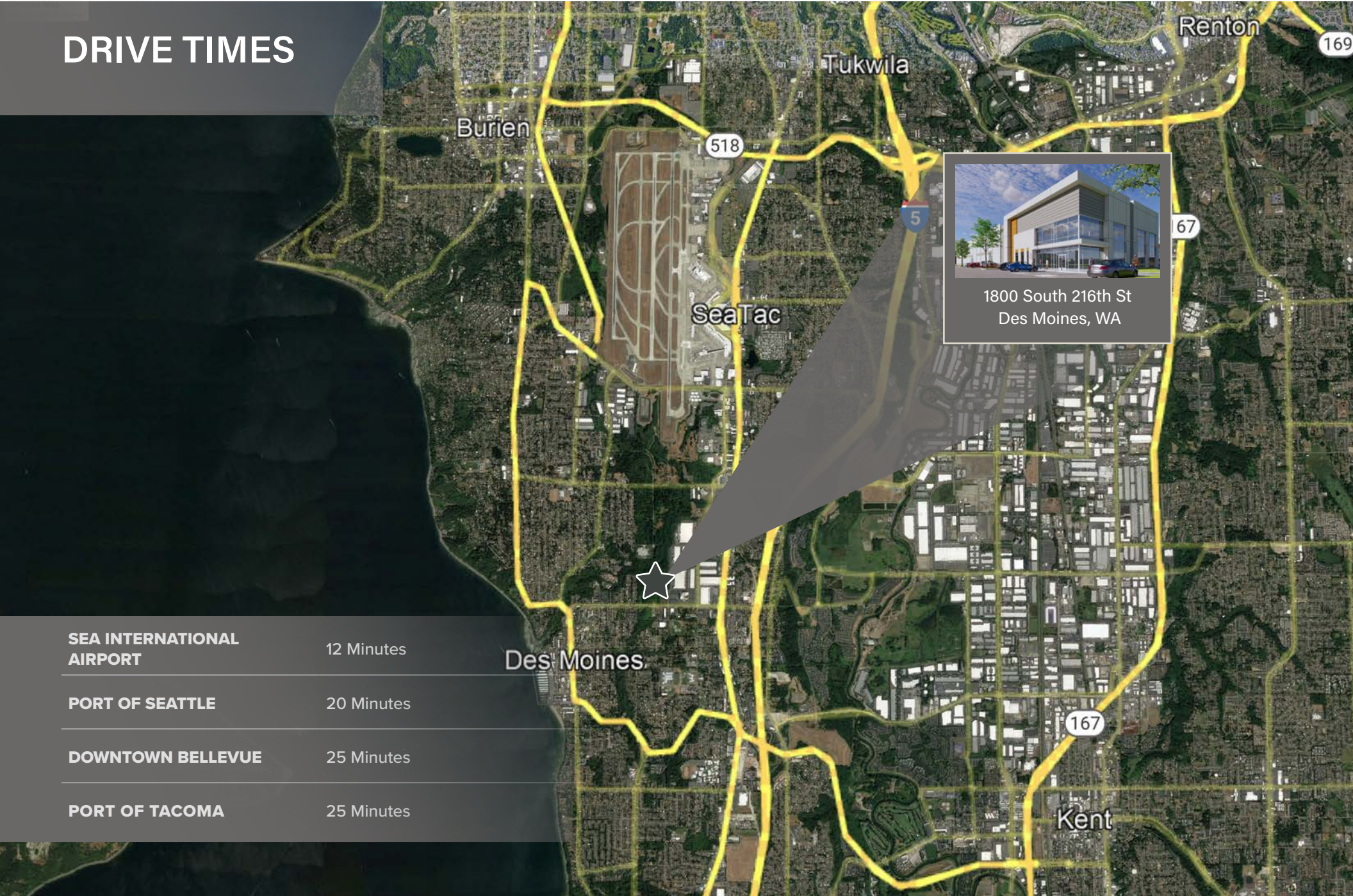
- Available for occupancy August 1, 2026
- Immediate access to I-5
- ESFR fire protection
- LED warehouse lighting and exterior wall pack lighting



# DEVELOPMENT PROGRESS



# DRIVE TIMES



**SEA INTERNATIONAL AIRPORT**

12 Minutes

**PORT OF SEATTLE**

20 Minutes

**DOWNTOWN BELLEVUE**

25 Minutes

**PORT OF TACOMA**

25 Minutes

# SITE BENEFITS

- Last opportunity of this size in the Des Moines area
- Adjacent to walking paths and wetland preservation centers
- Located next to FAA Headquarters
- Close to SEA International Airport
- Easy Access to I-5
- Proximity to Light Rail



# DEMOGRAPHICS

## Des Moines Fast Facts:

**Population:** 33,857

**Labor Force:** 18,009

**Unemployment:** 7.4%

**Median Age:** 39 years

**Median Household Income:** \$82,554

**Cost of Living Index:** 128.4

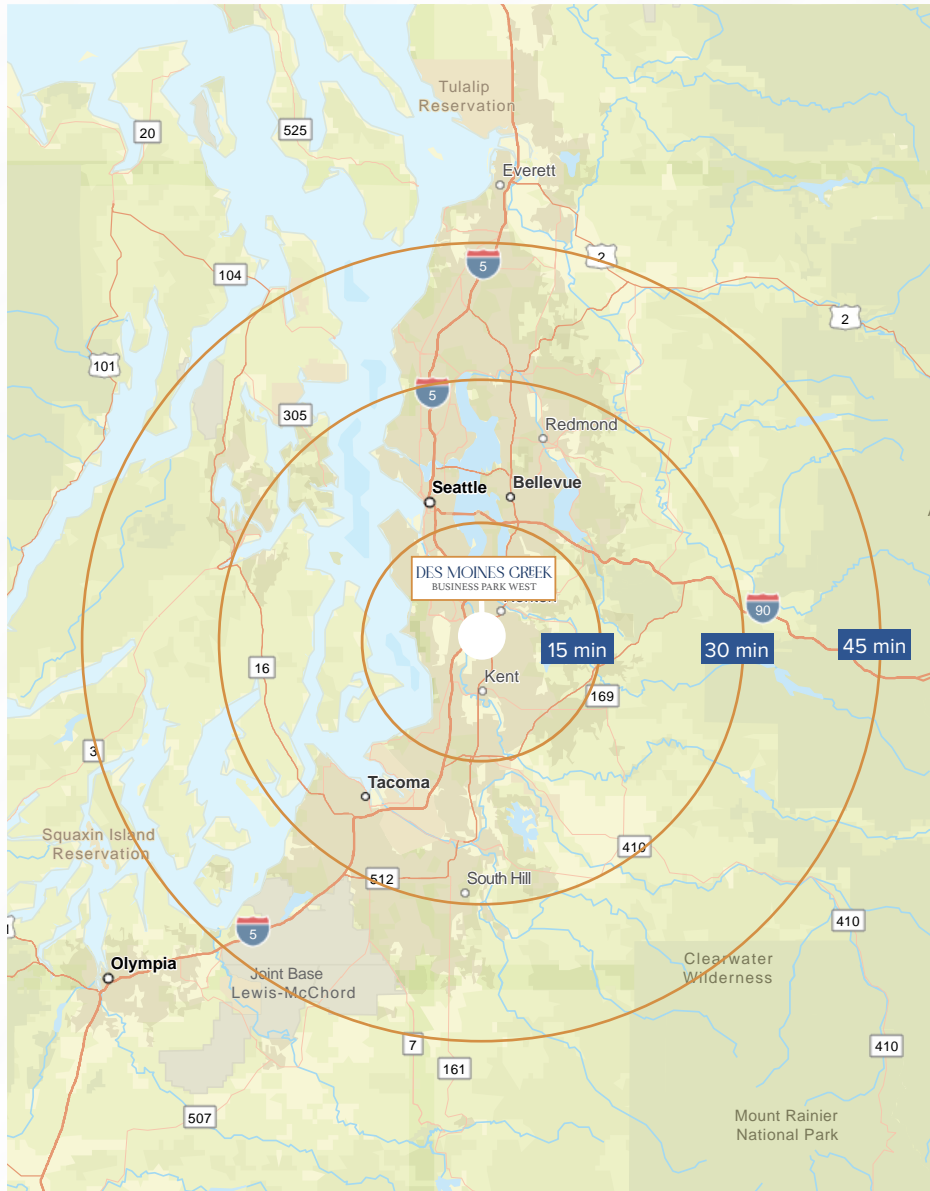
**Area:** 7.41 sq mi

**Median Home Price:** \$484,925

**Average Commute Time:** 30 minutes

**Gross Metro Product:** \$56.2M

**Primary Industries:** Professional Services, Manufacturing,  
Transportation/Utilities, Construction



## Travel Times for Map

**15 min:** Kent, SeaTac

**30 min:** Seattle, Auburn, Renton

**45 min:** Lakewood, Shoreline, Bothell