



FOR LEASE 5,215 SF

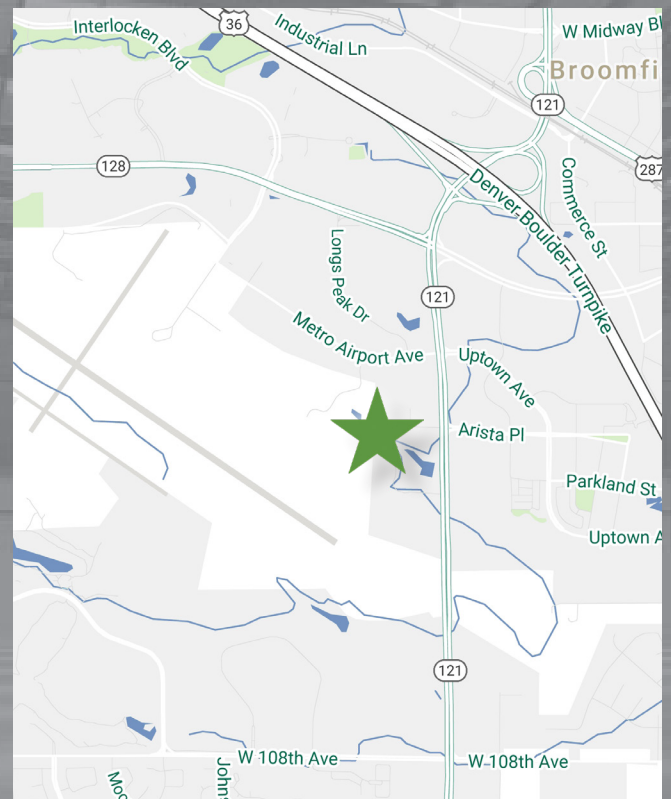
Skyway Corporate Center - Building B

8820 W. 116th Circle, Suite C, Broomfield, Colorado 80021

Skyway Corporate Center is a master planned business park located on Wadsworth Blvd. in the heart of metro Denver's dynamic northwest market. The project offers contemporary architectural design in a beautiful natural setting for a broad mix of professional, technical, light industrial and showroom commercial users. This project is strategically located off of US Highway 36 (Denver-Boulder Turnpike) and adjacent to Arista, the Broomfield Event Center, Rocky Mountain Metropolitan Airport (formerly Jeffco) and Interlocken.

Highlights

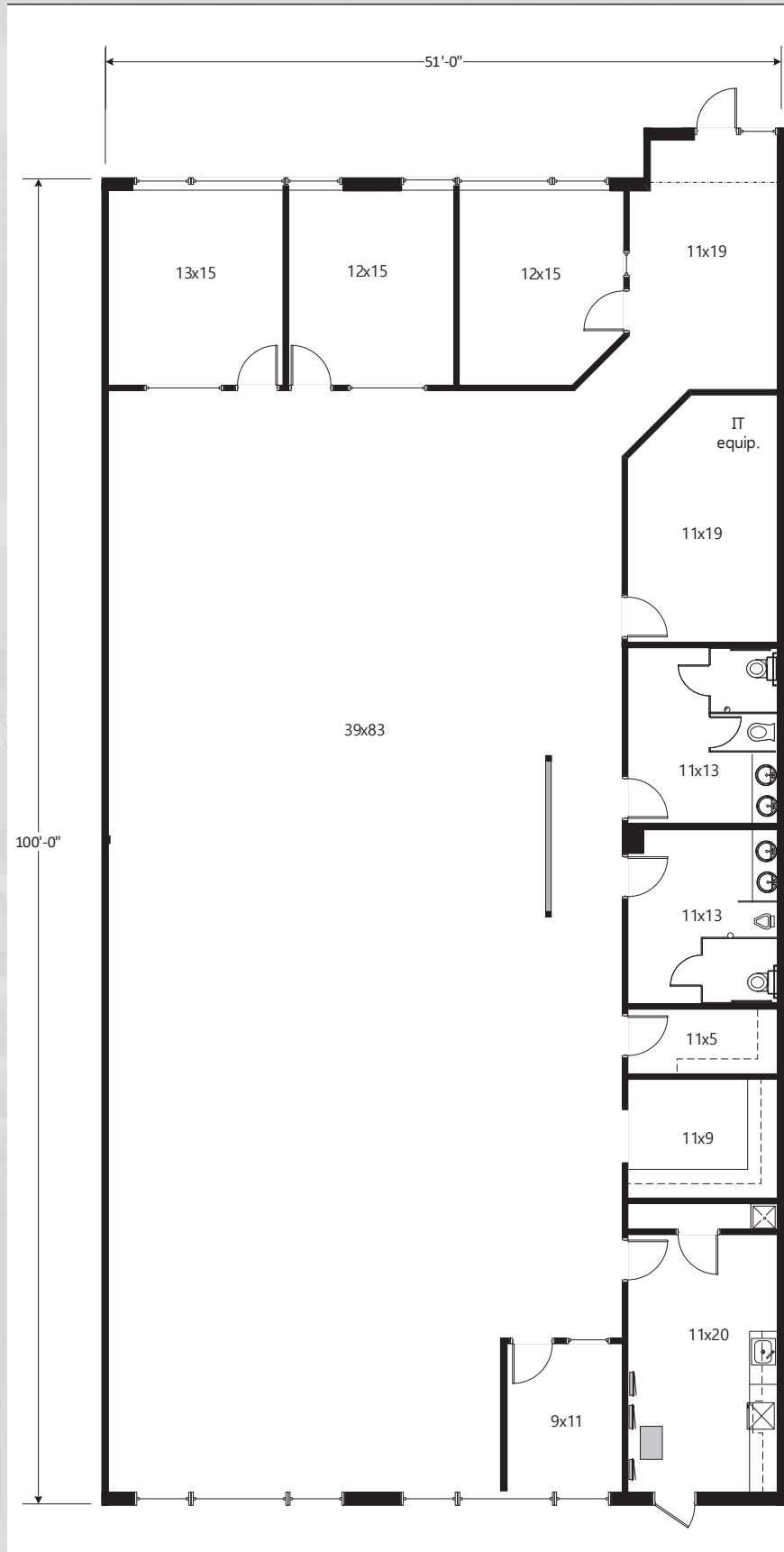
- Available SF:** ±5,215 SF
- Office SF:** 100%
- Parking:** 4:1,000
- Clear Height:** ±16'
- Power:** To be verified by an electrician
- Zoning:** I-1 PUD (City of Broomfield)
- 2026 CAM:** \$8.08/SF (estimate)
- Base Rent:** \$11.95/SF NNN



Skyway Corporate Center - Building B

8820 W. 116th Circle, Suite C, Broomfield, Colorado 80021

Space Plan



All information furnished regarding the property for sale, rental or financing is obtained from sources deemed reliable. No representation is made to the accuracy thereof and is submitted subject to errors, omissions, change of price rental or other conditions, prior sale, lease, or financing, or withdrawal without notice. First Industrial Realty Trust, Inc. represents the Seller in this transaction and as such owes all duties and obligations thereto.

Skyway Corporate Center - Building B

8820 W. 116th Circle, Suite C, Broomfield, Colorado 80021



Broker Contact

Jeremy Kroner
(303) 264-1916
jeremy.kroner@cbre.com

Bill Thompson
(720) 528-6373
bill.thompson@cbre.com

Tyler Carner
(303) 264-1903
tyler.carner@cbre.com

CBRE www.cbre.com

Owner Contact

John Strabel
Regional Director
8200 Park Meadows Drive, Unit 8226
Lone Tree, CO 80124
Direct: (248) 894-3974
jstrabel@firstindustrial.com

FIRST
INDUSTRIAL
REALTY • TRUST

www.firstindustrial.com