

# ORION COMMERCE PARK



**INDUSTRIAL/OFFICE  
FOR LEASE**

110, 124, 136, & 148 W ORION ST, 6100 & 6202 S MAPLE AVE, 125 W GEMINI DR, 6105 & 6125 S ASH AVE  
TEMPE | ARIZONA | 85283

**FOR MORE INFORMATION,  
PLEASE CONTACT:**

**DARIN EDWARDS**

D 480.214.1117

M 480.628.8661

dedwards@cpiaz.com

**CORY BREINHOLT**

D 480.889.2569

M 480.220.9987

cbreinholt@cpiaz.com

**COMMERCIAL PROPERTIES INC.**

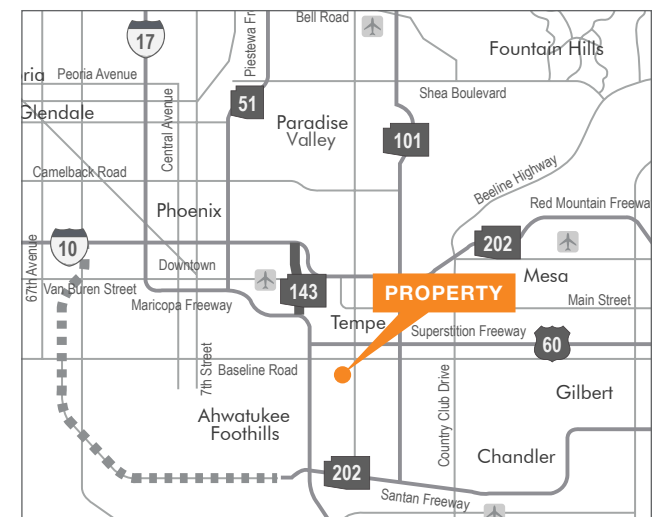
2323 W University Dr

Tempe, AZ, 85281

www.cpiaz.com

## PROPERTY FEATURES

- ±177,591 SF – Multi-Tenant Industrial Park
- Adjacent to US-60 & I-10 Freeways, Minutes from Sky Harbor International Airport
- Suites Range from 25% - 100% Office Buildout
- Zoned GID
- 10' - 16' Clear Height
- 8'x8' & 10'x10' Grade Level Doors
- Abundant Parking



*The information contained herein has been obtained from various sources. We have no reason to doubt its accuracy; however, J & J Commercial Properties, Inc. has not verified such information and makes no guarantee, warranty or representation about such information. The prospective buyer or lessee should independently verify all dimensions, specifications, floor plans, and all information prior to the lease or purchase of the property. All offerings are subject to prior sale, lease, or withdrawal from the market without prior notice.*

05 22 26



**COMMERCIAL  
PROPERTIES INC.**  
Locally Owned. Globally Connected. Since 1982.



# ORION COMMERCE PARK

## SITE PLAN

UNDER NEW OWNERSHIP



### AVAILABILITIES

BLDG	SUITE	SF	OFC. %	OFFICE LAYOUT
6100	112	±1,632	40%	Reception, 2 Offices, Conference Room, Restroom
6100	114	±1,793	27%	Reception, Office, Storage Room, Restroom, Bullpen
6100	115	±3,772	40%	Restroom, Bullpen
6105	A1-A3	±3,508	40%	2 Reception, 3 Offices, Conference Room, Bullpen, Break Room, 2 Restrooms
6105	A5	±2,320	-	-
148	C2	±2,150	-	Reception, 1 Restroom, A/C Warehouse with Double Doors
136	D4-D5	±3,000	35%	Reception, 5 Offices, Break Room, Restroom
136	D8	±1,582	40%	Reception, 2 Offices, Bull Pen, Restrooms
124	F7	±1,817	60%	Reception, 3 Offices, Break Room, Restroom
125	E1-2	±3,955	75%	Reception, 11 Offices, Conference Room, Bull Pen, Break Room, 2 Restrooms
125	E11-E12	±2,736	40%	-
125	E14	±1,543	-	-

<b>6105 S Ash Ave (Bldg A) - ±9,381 SF</b> Suites A1-8	<b>6125 S Ash Ave (Bldg B) - ±9,203 SF</b> Suites B1-8	<b>148 W Orion St (Bldg C) - ±8,773 SF</b> Suites C1-7
<b>136 W Orion St (Bldg D) - ±22,047 SF</b> Suites D1-10	<b>125 W Gemini Dr (Bldg E) - ±39,949 SF</b> Suites E1-20	<b>110 W Orion St - ±19,562 SF</b> Suites 133-145
<b>124 W Orion St (Bldg F) - ±19,632 SF</b> Suites F1-10	<b>6100 S Maple Ave - ±30,003 SF</b> Suites 101-119	<b>6202 S Maple Ave - ±19,041 SF</b> Suites 120-132

■ AVAILABLE    ■ OCCUPIED

## FOR MORE INFORMATION, PLEASE CONTACT:

<b>DARIN EDWARDS</b> D 480.214.1117 M 480.628.8661 dedwards@cpiaz.com	<b>CORY BREINHOLT</b> D 480.889.2569 M 480.220.9987 cbreinholt@cpiaz.com
--	---

**COMMERCIAL PROPERTIES INC.**  
Locally Owned. Globally Connected. CORFAC  
TEMPE: 2323 W University Drive, Tempe, AZ 85281 | 480.966.2301  
SCOTTSDALE: 8767 E Via de Commercio, Suite 101, Scottsdale, AZ 85258 | www.cpiaz.com

*The information contained herein has been obtained from various sources. We have no reason to doubt its accuracy; however, J & J Commercial Properties, Inc. has not verified such information and makes no guarantee, warranty or representation about such information. The prospective buyer or lessee should independently verify all dimensions, specifications, floor plans, and all information prior to the lease or purchase of the property. All offerings are subject to prior sale, lease, or withdrawal from the market without prior notice.*

05 22 2022

# ORION COMMERCE PARK

## RENDERINGS

UNDER NEW OWNERSHIP



### ORION COMMERCE CENTER



MONUMENT SIGN

Property Updates  
& New Signage

**COMING SOON**



FRONT



BACK

### FOR MORE INFORMATION, PLEASE CONTACT:

**DARIN EDWARDS**  
D 480.214.1117  
M 480.628.8661  
dedwards@cpiaz.com

**CORY BREINHOLT**  
D 480.889.2569  
M 480.220.9987  
cbreinholt@cpiaz.com



**COMMERCIAL PROPERTIES INC.**

Locally Owned. Globally Connected. CORFAC

TEMPE: 2323 W University Drive, Tempe, AZ 85281 | 480.966.2301  
SCOTTSDALE: 8767 E Via de Commercio, Suite 101, Scottsdale, AZ 85258 | www.cpiaz.com

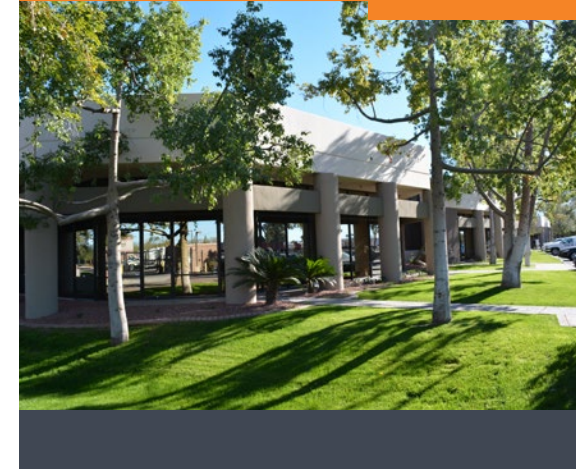
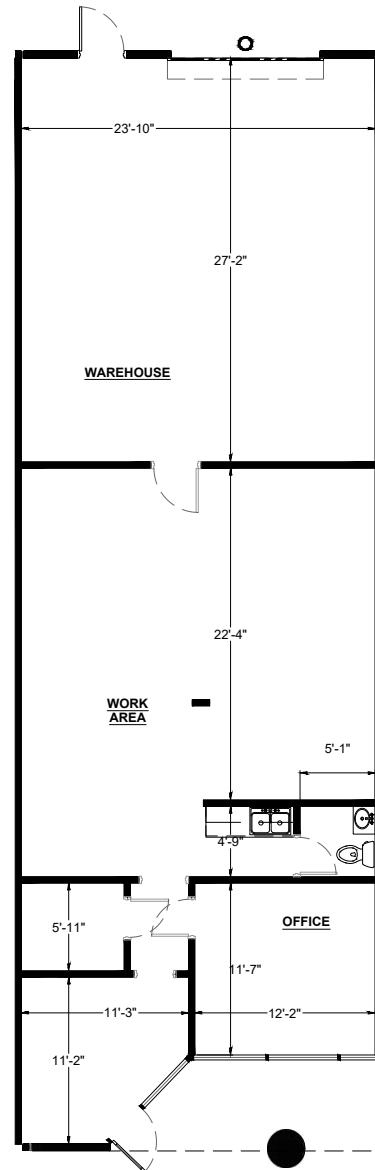
*The information contained herein has been obtained from various sources. We have no reason to doubt its accuracy; however, J & J Commercial Properties, Inc. has not verified such information and makes no guarantee, warranty or representation about such information. The prospective buyer or lessee should independently verify all dimensions, specifications, floor plans, and all information prior to the lease or purchase of the property. All offerings are subject to prior sale, lease, or withdrawal from the market without prior notice.*

05 22 26

# ORION COMMERCE PARK

6100 S MAPLE AVE, STE 114 (±1,793 SF)

UNDER NEW OWNERSHIP



## FOR MORE INFORMATION

**DARIN EDWARDS**

D 480.214.1117

M 480.628.8661

dedwards@cpiaz.com

**CORY BREINHOLT**

D 480.889.2569

M 480.220.9987

cbreinholt@cpiaz.com

## COMMERCIAL PROPERTIES INC.

2323 W University Dr

Tempe, AZ, 85281

[www.cpiaz.com](http://www.cpiaz.com)

## ORION COMMERCE PARK

110, 124, 136, 148 W ORION ST

6100 & 6202 S MAPLE AVE

125 W GEMINI AVE

6105 & 6125 S ASH AVE

PHOENIX, AZ 85040



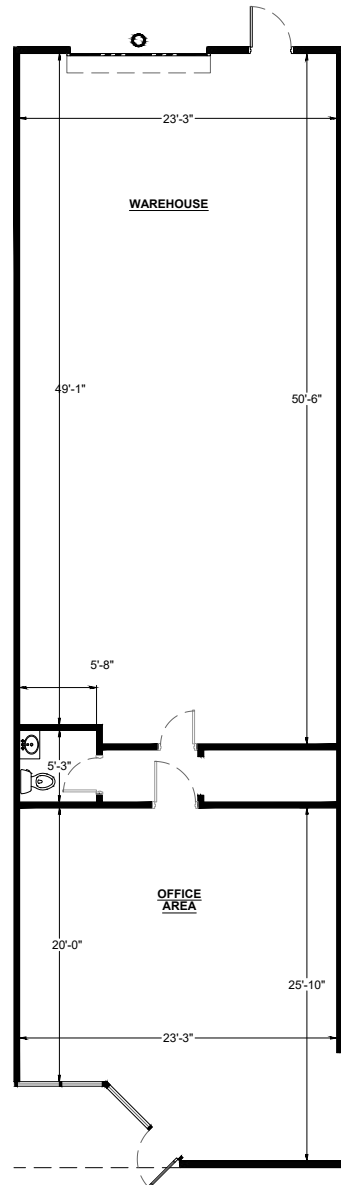
The information contained herein has been obtained from various sources. We have no reason to doubt its accuracy; however, J & J Commercial Properties, Inc. has not verified such information and makes no guarantee, warranty or representation about such information. The prospective buyer or lessee should independently verify all dimensions, specifications, floor plans, and all information prior to the lease or purchase of the property. All offerings are subject to prior sale, lease, or withdrawal from the market without prior notice.

05 22 26

# ORION COMMERCE PARK

6100 S MAPLE AVE, STE 115 (±3,772 SF)

UNDER NEW OWNERSHIP



## FOR MORE INFORMATION

**DARIN EDWARDS**

D 480.214.1117

M 480.628.8661

dedwards@cpi.az.gov

**CORY BREINHOLT**

D 480.889.2569

M 480.220.9987

cbreinholt@cpi.az.gov

## COMMERCIAL PROPERTIES INC.

2323 W University Dr

Tempe, AZ, 85281

[www.cpi.az.gov](http://www.cpi.az.gov)

## ORION COMMERCE PARK

110, 124, 136, 148 W ORION ST

6100 & 6202 S MAPLE AVE

125 W GEMINI AVE

6105 & 6125 S ASH AVE

PHOENIX, AZ 85040



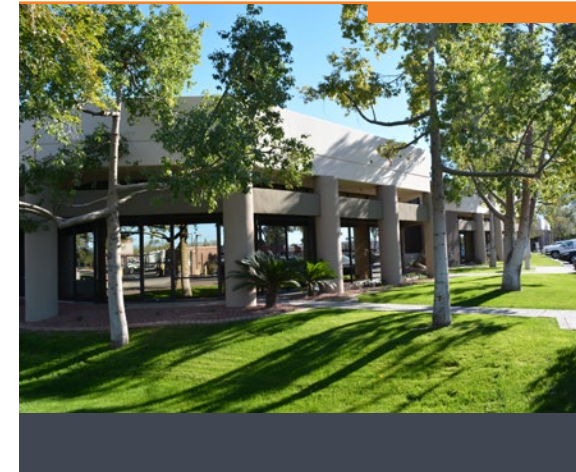
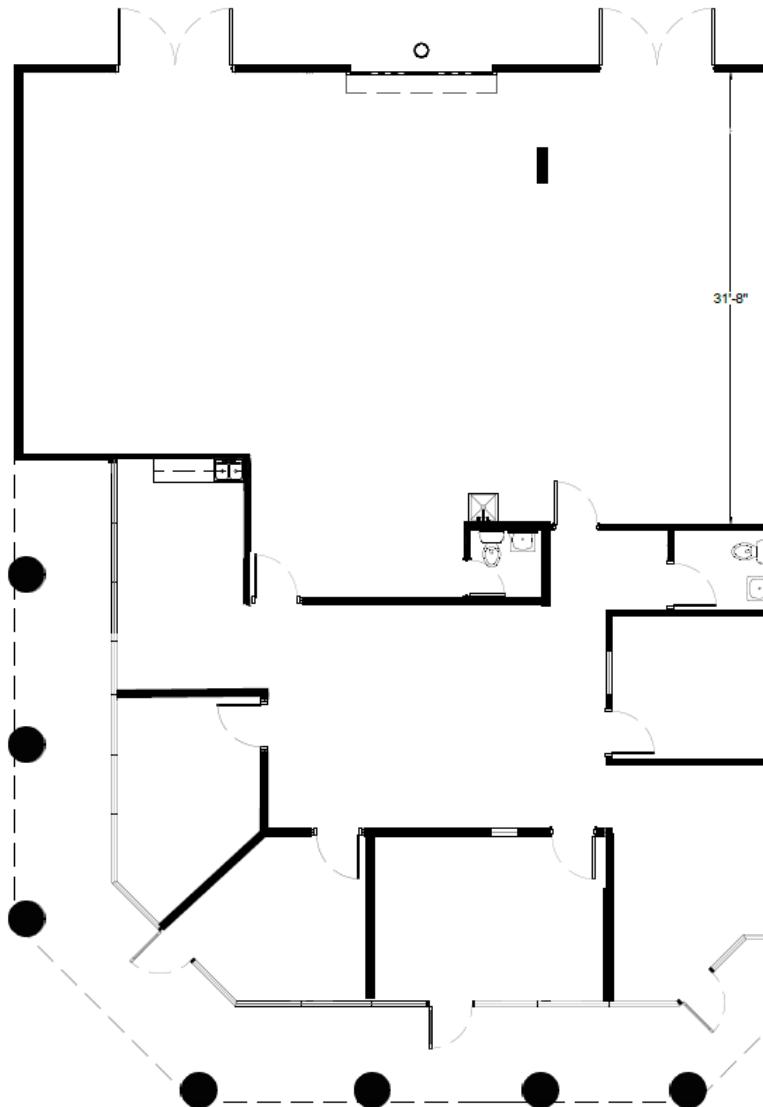
The information contained herein has been obtained from various sources. We have no reason to doubt its accuracy; however, J & J Commercial Properties, Inc. has not verified such information and makes no guarantee, warranty or representation about such information. The prospective buyer or lessee should independently verify all dimensions, specifications, floor plans, and all information prior to the lease or purchase of the property. All offerings are subject to prior sale, lease, or withdrawal from the market without prior notice.

05 22 26

# ORION COMMERCE PARK

6105 S ASH, A1-3 (±3,508 SF)

UNDER NEW OWNERSHIP



## FOR MORE INFORMATION

**DARIN EDWARDS**

D 480.214.1117

M 480.628.8661

dedwards@cpiaz.com

**CORY BREINHOLT**

D 480.889.2569

M 480.220.9987

cbreinholt@cpiaz.com

## COMMERCIAL PROPERTIES INC.

2323 W University Dr

Tempe, AZ, 85281

[www.cpiaz.com](http://www.cpiaz.com)

## ORION COMMERCE PARK

110, 124, 136, 148 W ORION ST

6100 & 6202 S MAPLE AVE

125 W GEMINI AVE

6105 & 6125 S ASH AVE

PHOENIX, AZ 85040



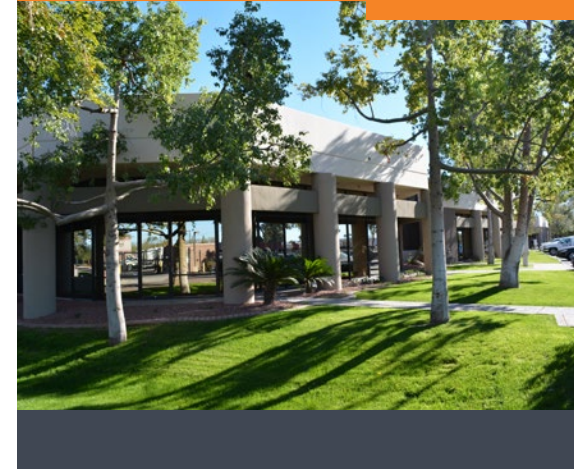
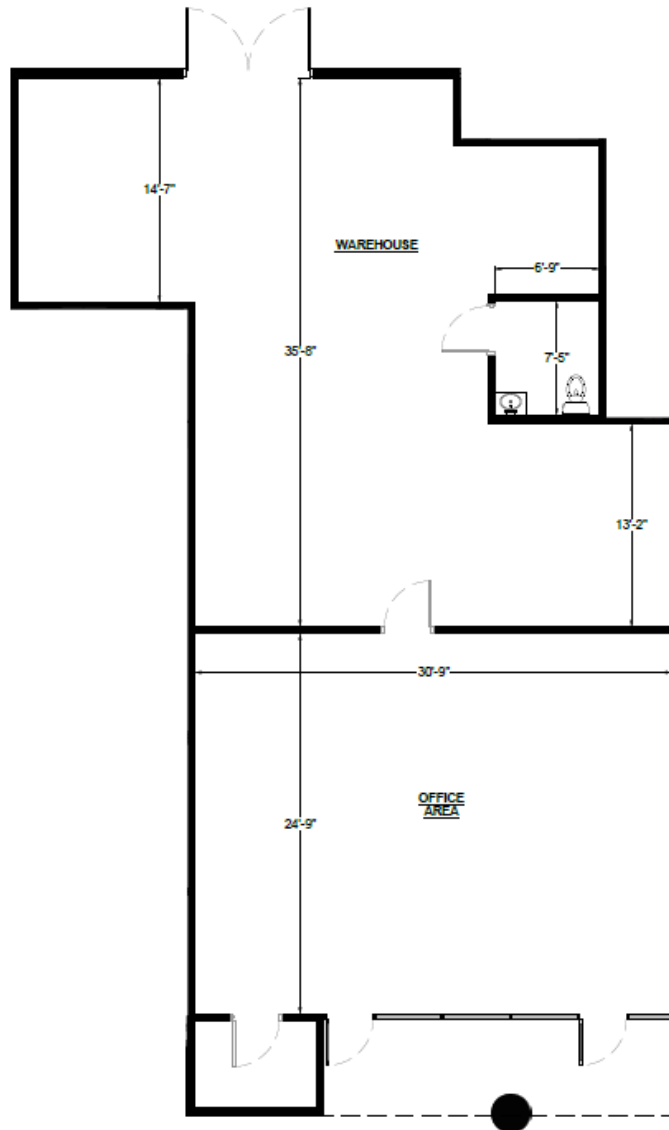
*The information contained herein has been obtained from various sources. We have no reason to doubt its accuracy; however, J & J Commercial Properties, Inc. has not verified such information and makes no guarantee, warranty or representation about such information. The prospective buyer or lessee should independently verify all dimensions, specifications, floor plans, and all information prior to the lease or purchase of the property. All offerings are subject to prior sale, lease, or withdrawal from the market without prior notice.*

05 22 26

# ORION COMMERCE PARK

148 W ORION ST, C2 (±2,150 SF)

UNDER NEW OWNERSHIP



## FOR MORE INFORMATION

**DARIN EDWARDS**

D 480.214.1117

M 480.628.8661

dedwards@cpiaz.com

**CORY BREINHOLT**

D 480.889.2569

M 480.220.9987

cbreinholt@cpiaz.com

## COMMERCIAL PROPERTIES INC.

2323 W University Dr

Tempe, AZ, 85281

[www.cpiaz.com](http://www.cpiaz.com)

## ORION COMMERCE PARK

110, 124, 136, 148 W ORION ST

6100 & 6202 S MAPLE AVE

125 W GEMINI AVE

6105 & 6125 S ASH AVE

PHOENIX, AZ 85040



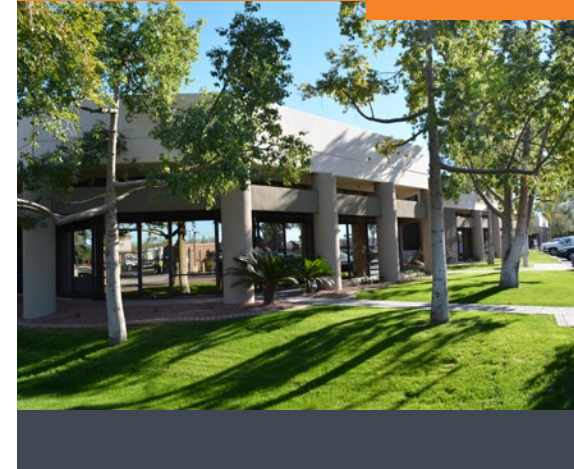
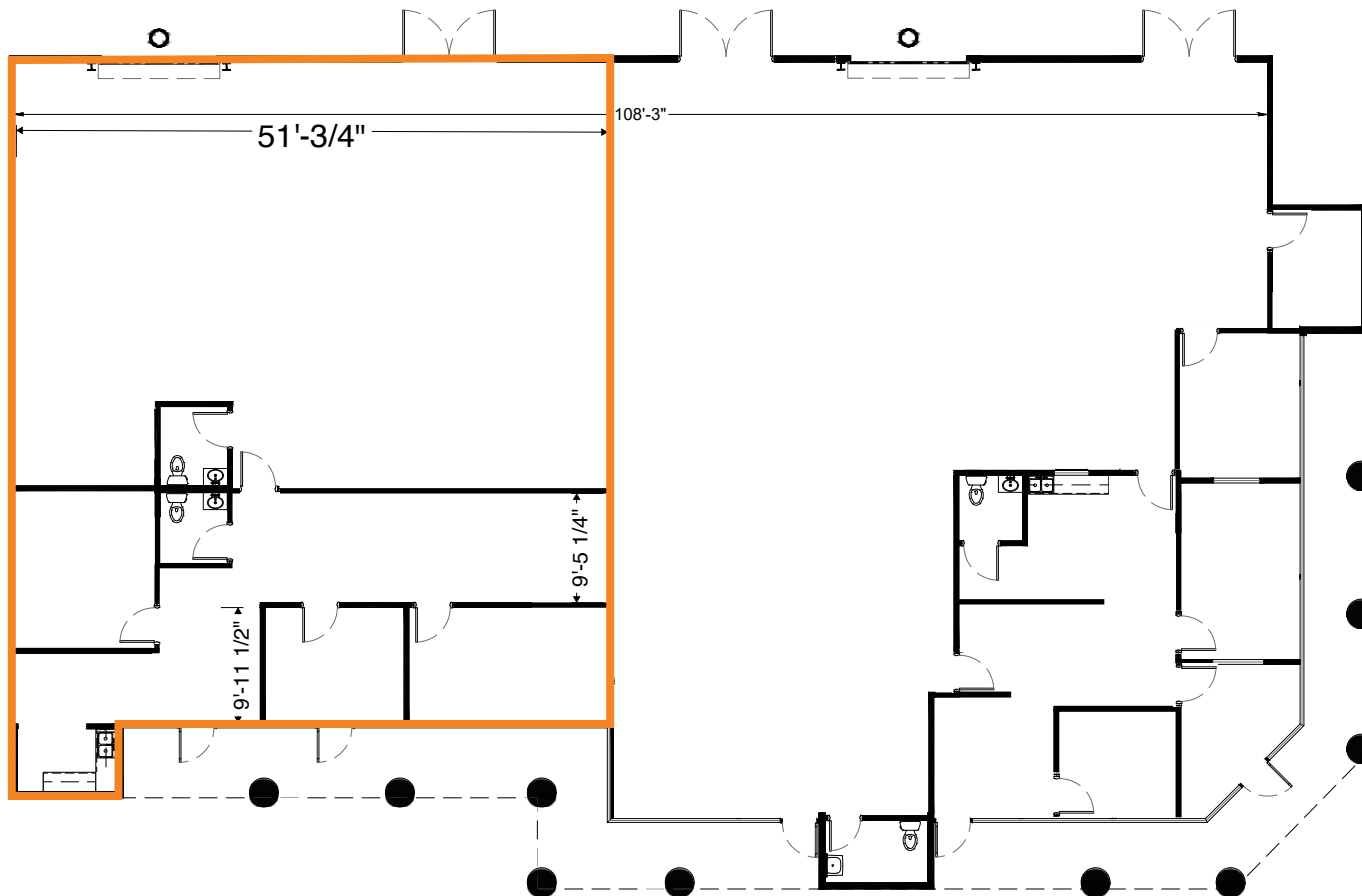
The information contained herein has been obtained from various sources. We have no reason to doubt its accuracy; however, J & J Commercial Properties, Inc. has not verified such information and makes no guarantee, warranty or representation about such information. The prospective buyer or lessee should independently verify all dimensions, specifications, floor plans, and all information prior to the lease or purchase of the property. All offerings are subject to prior sale, lease, or withdrawal from the market without prior notice.

05 22 26

# ORION COMMERCE PARK

136 W ORION ST, D4-D5 (±3,000 SF)

UNDER NEW OWNERSHIP



## FOR MORE INFORMATION

**DARIN EDWARDS**

D 480.214.1117

M 480.628.8661

dedwards@cpiaz.com

**CORY BREINHOLT**

D 480.889.2569

M 480.220.9987

cbreinholt@cpiaz.com

## COMMERCIAL PROPERTIES INC.

2323 W University Dr

Tempe, AZ, 85281

[www.cpiaz.com](http://www.cpiaz.com)

## ORION COMMERCE PARK

110, 124, 136, 148 W ORION ST

6100 & 6202 S MAPLE AVE

125 W GEMINI AVE

6105 & 6125 S ASH AVE

PHOENIX, AZ 85040



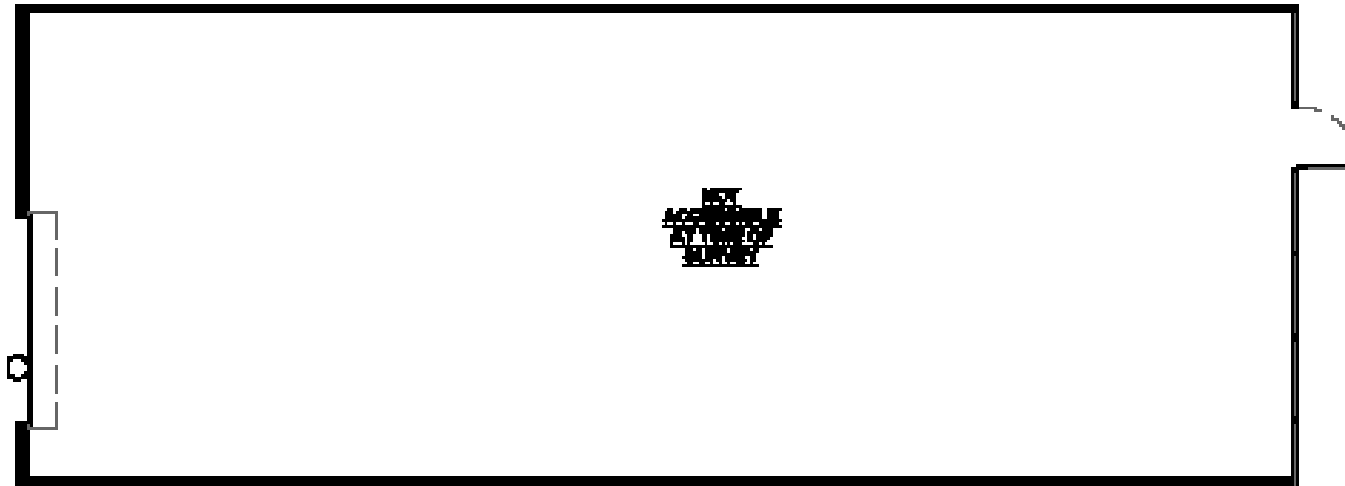
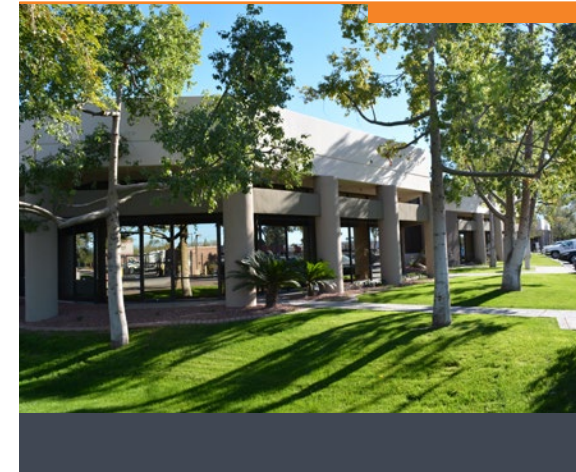
The information contained herein has been obtained from various sources. We have no reason to doubt its accuracy; however, J & J Commercial Properties, Inc. has not verified such information and makes no guarantee, warranty or representation about such information. The prospective buyer or lessee should independently verify all dimensions, specifications, floor plans, and all information prior to the lease or purchase of the property. All offerings are subject to prior sale, lease, or withdrawal from the market without prior notice.

05 22 26

# ORION COMMERCE PARK

136 W ORION ST, D8 (±3,000 SF)

UNDER NEW OWNERSHIP



## FOR MORE INFORMATION

**DARIN EDWARDS**

D 480.214.1117

M 480.628.8661

dedwards@cpiaz.com

**CORY BREINHOLT**

D 480.889.2569

M 480.220.9987

cbreinholt@cpiaz.com

### COMMERCIAL PROPERTIES INC.

2323 W University Dr

Tempe, AZ, 85281

[www.cpiaz.com](http://www.cpiaz.com)

### ORION COMMERCE PARK

110, 124, 136, 148 W ORION ST

6100 & 6202 S MAPLE AVE

125 W GEMINI AVE

6105 & 6125 S ASH AVE

PHOENIX, AZ 85040



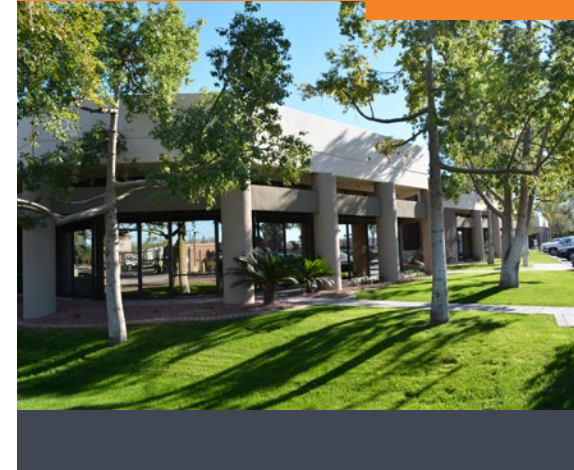
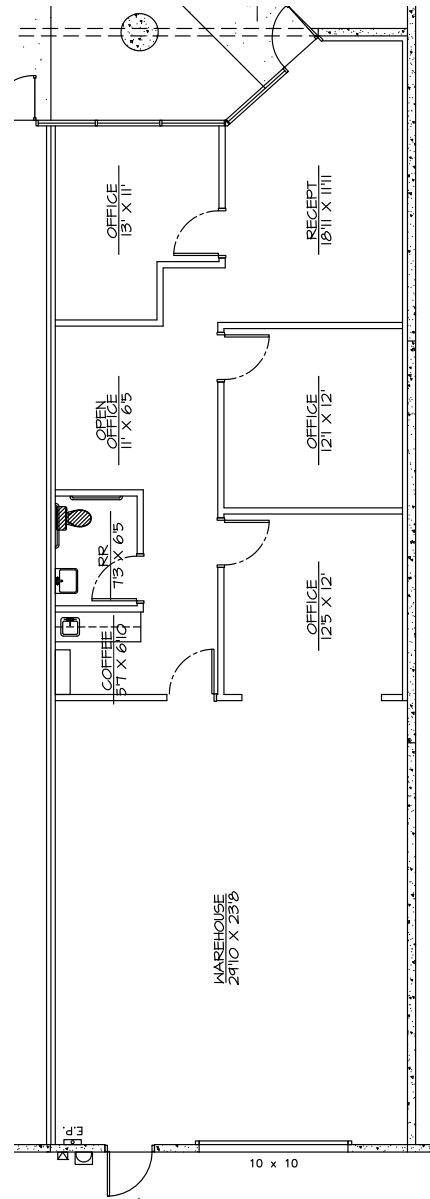
*The information contained herein has been obtained from various sources. We have no reason to doubt its accuracy; however, J & J Commercial Properties, Inc. has not verified such information and makes no guarantee, warranty or representation about such information. The prospective buyer or lessee should independently verify all dimensions, specifications, floor plans, and all information prior to the lease or purchase of the property. All offerings are subject to prior sale, lease, or withdrawal from the market without prior notice.*

05 22 26

# ORION COMMERCE PARK

124 W ORION ST, F7 (±1,817 SF)

UNDER NEW OWNERSHIP



## FOR MORE INFORMATION

**DARIN EDWARDS**

D 480.214.1117

M 480.628.8661

dedwards@cpiaz.com

**CORY BREINHOLT**

D 480.889.2569

M 480.220.9987

cbreinholt@cpiaz.com

## COMMERCIAL PROPERTIES INC.

2323 W University Dr

Tempe, AZ, 85281

[www.cpiaz.com](http://www.cpiaz.com)

## ORION COMMERCE PARK

110, 124, 136, 148 W ORION ST

6100 & 6202 S MAPLE AVE

125 W GEMINI AVE

6105 & 6125 S ASH AVE

PHOENIX, AZ 85040



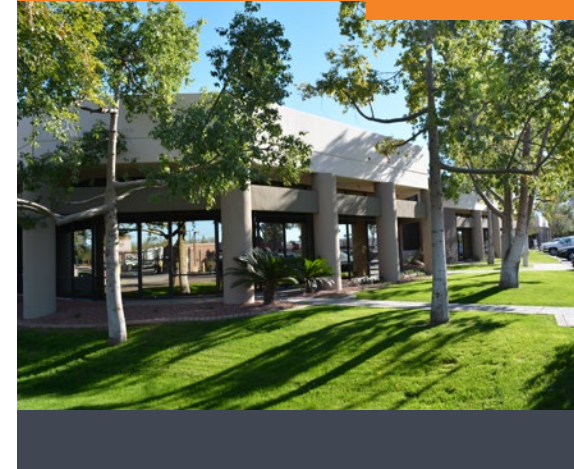
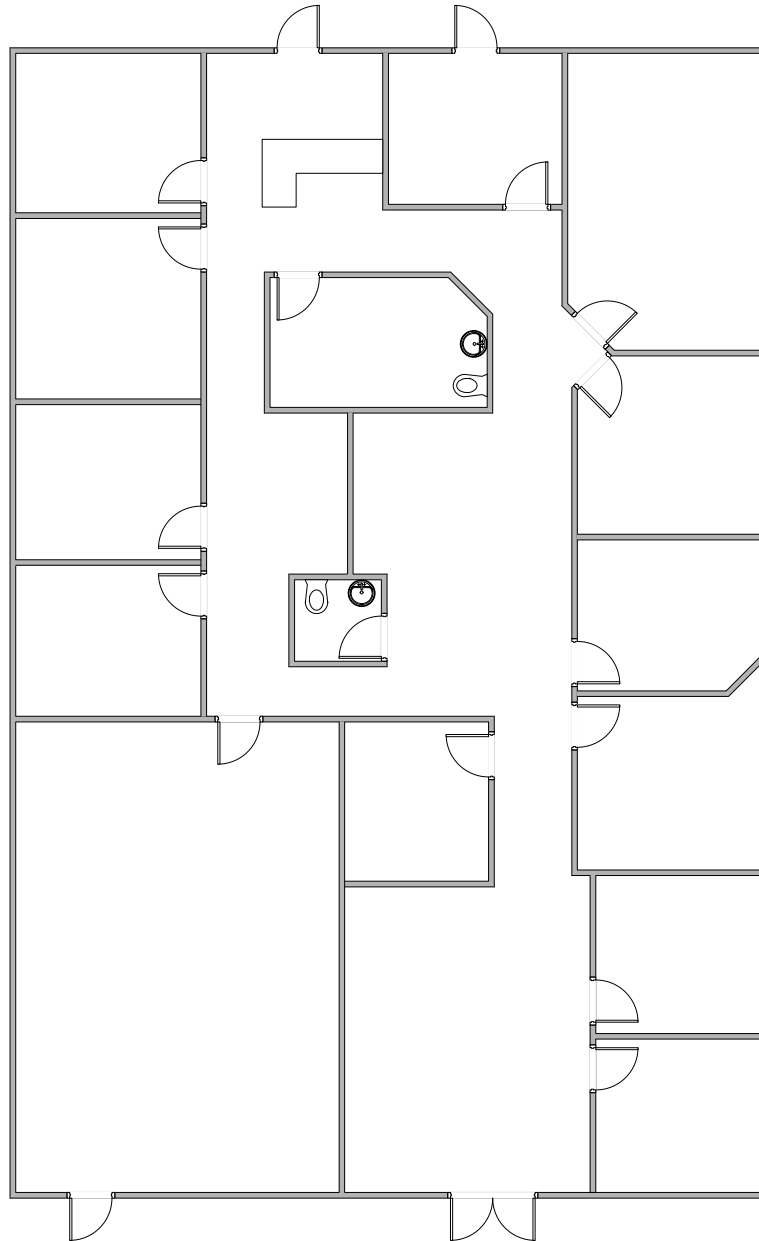
The information contained herein has been obtained from various sources. We have no reason to doubt its accuracy; however, J & J Commercial Properties, Inc. has not verified such information and makes no guarantee, warranty or representation about such information. The prospective buyer or lessee should independently verify all dimensions, specifications, floor plans, and all information prior to the lease or purchase of the property. All offerings are subject to prior sale, lease, or withdrawal from the market without prior notice.

05 22 26

# ORION COMMERCE PARK

125 W GEMINI DR, E1-2 (±3,955 SF)

UNDER NEW OWNERSHIP



## FOR MORE INFORMATION

**DARIN EDWARDS**  
D 480.214.1117  
M 480.628.8661  
dedwards@cpiaz.com

**CORY BREINHOLT**  
D 480.889.2569  
M 480.220.9987  
cbreinholt@cpiaz.com

**COMMERCIAL PROPERTIES INC.**  
2323 W University Dr  
Tempe, AZ, 85281  
www.cpiaz.com

**ORION COMMERCE PARK**  
110, 124, 136, 148 W ORION ST  
6100 & 6202 S MAPLE AVE  
125 W GEMINI AVE  
6105 & 6125 S ASH AVE  
PHOENIX, AZ 85040



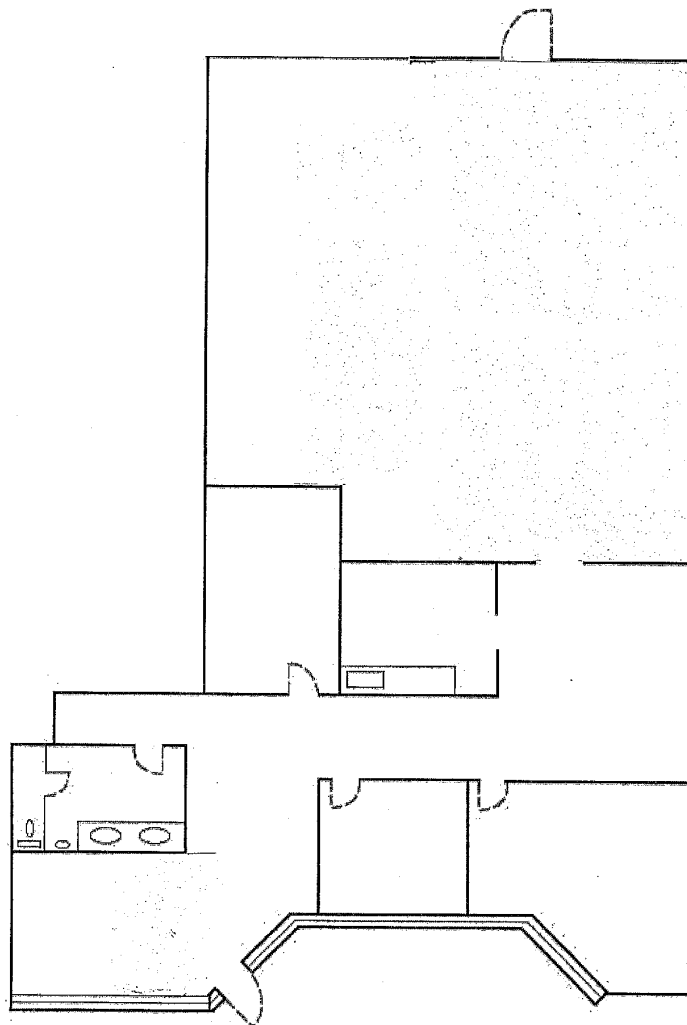
*The information contained herein has been obtained from various sources. We have no reason to doubt its accuracy; however, J & J Commercial Properties, Inc. has not verified such information and makes no guarantee, warranty or representation about such information. The prospective buyer or lessee should independently verify all dimensions, specifications, floor plans, and all information prior to the lease or purchase of the property. All offerings are subject to prior sale, lease, or withdrawal from the market without prior notice.*

05 22 26

# ORION COMMERCE PARK

125 W GEMINI DR, E11-12 (±2,736 SF)

UNDER NEW OWNERSHIP



## FOR MORE INFORMATION

**DARIN EDWARDS**  
D 480.214.1117  
M 480.628.8661  
dedwards@cpiaz.com

**CORY BREINHOLT**  
D 480.889.2569  
M 480.220.9987  
cbreinholt@cpiaz.com

**COMMERCIAL PROPERTIES INC.**  
2323 W University Dr  
Tempe, AZ, 85281  
[www.cpiaz.com](http://www.cpiaz.com)

**ORION COMMERCE PARK**  
110, 124, 136, 148 W ORION ST  
6100 & 6202 S MAPLE AVE  
125 W GEMINI AVE  
6105 & 6125 S ASH AVE  
PHOENIX, AZ 85040



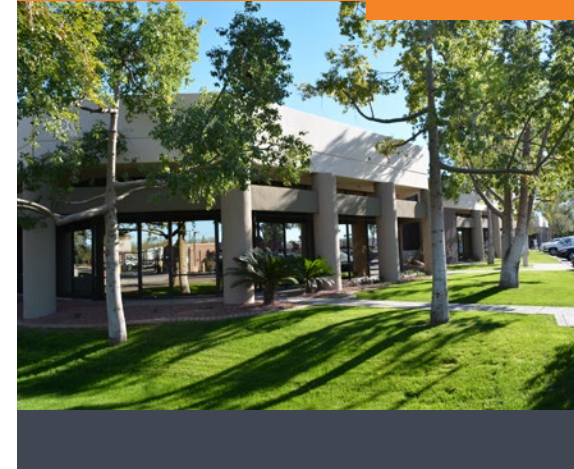
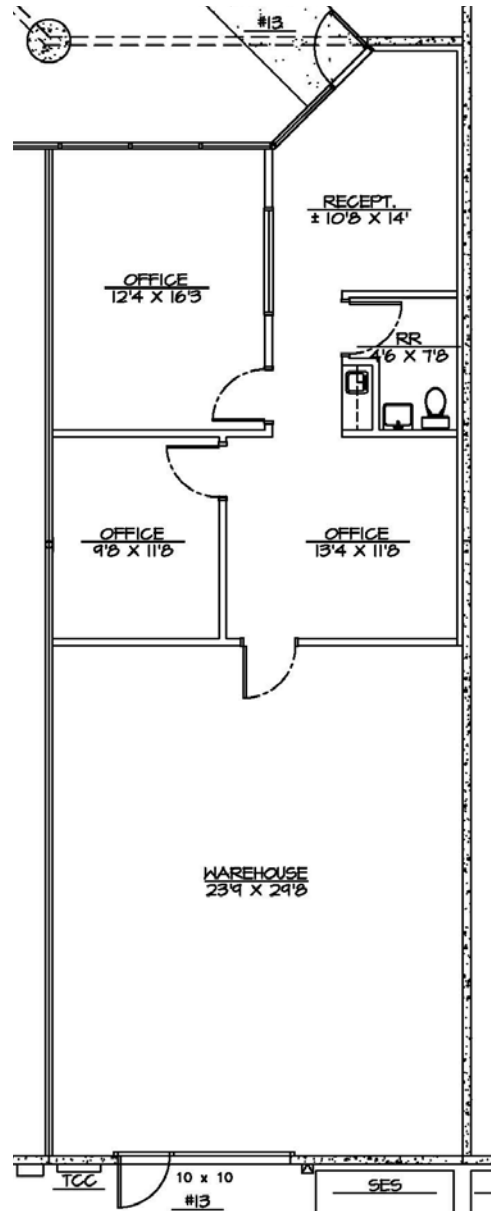
*The information contained herein has been obtained from various sources. We have no reason to doubt its accuracy; however, J & J Commercial Properties, Inc. has not verified such information and makes no guarantee, warranty or representation about such information. The prospective buyer or lessee should independently verify all dimensions, specifications, floor plans, and all information prior to the lease or purchase of the property. All offerings are subject to prior sale, lease, or withdrawal from the market without prior notice.*

05 22 26

# ORION COMMERCE PARK

125 W GEMINI DR, E13 (±1,543 SF)

UNDER NEW OWNERSHIP



## FOR MORE INFORMATION

**DARIN EDWARDS**

D 480.214.1117

M 480.628.8661

dedwards@cpiaz.com

**CORY BREINHOLT**

D 480.889.2569

M 480.220.9987

cbreinholt@cpiaz.com

## COMMERCIAL PROPERTIES INC.

2323 W University Dr

Tempe, AZ, 85281

[www.cpiaz.com](http://www.cpiaz.com)

## ORION COMMERCE PARK

110, 124, 136, 148 W ORION ST

6100 & 6202 S MAPLE AVE

125 W GEMINI AVE

6105 & 6125 S ASH AVE

PHOENIX, AZ 85040



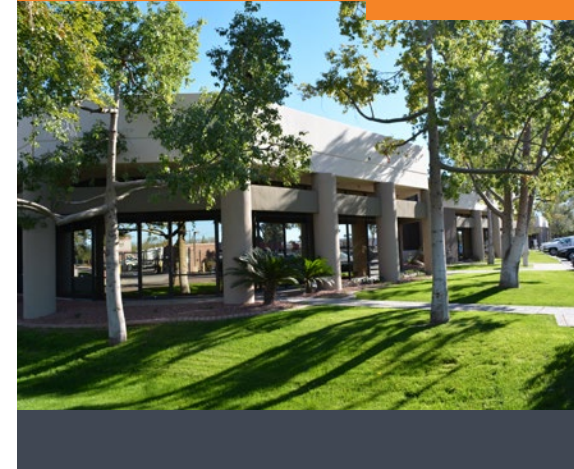
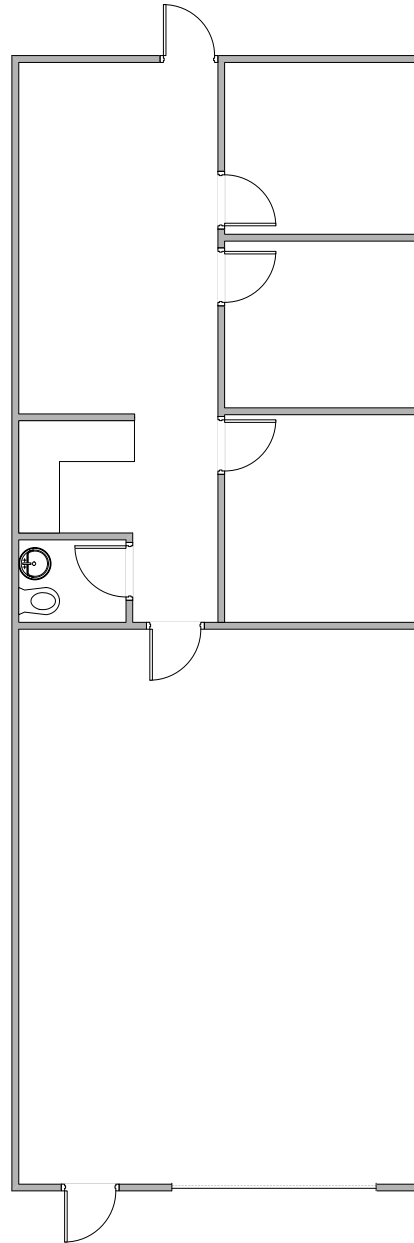
The information contained herein has been obtained from various sources. We have no reason to doubt its accuracy; however, J & J Commercial Properties, Inc. has not verified such information and makes no guarantee, warranty or representation about such information. The prospective buyer or lessee should independently verify all dimensions, specifications, floor plans, and all information prior to the lease or purchase of the property. All offerings are subject to prior sale, lease, or withdrawal from the market without prior notice.

05 22 26

# ORION COMMERCE PARK

6100 S MAPLE AVE, 112 (±1,632 SF)

UNDER NEW OWNERSHIP



## FOR MORE INFORMATION

**DARIN EDWARDS**

D 480.214.1117

M 480.628.8661

dedwards@cpiaz.com

**CORY BREINHOLT**

D 480.889.2569

M 480.220.9987

cbreinholt@cpiaz.com

## COMMERCIAL PROPERTIES INC.

2323 W University Dr

Tempe, AZ, 85281

[www.cpiaz.com](http://www.cpiaz.com)

## ORION COMMERCE PARK

110, 124, 136, 148 W ORION ST

6100 & 6202 S MAPLE AVE

125 W GEMINI AVE

6105 & 6125 S ASH AVE

PHOENIX, AZ 85040



**COMMERCIAL PROPERTIES INC.**

Locally Owned, Globally Connected. 

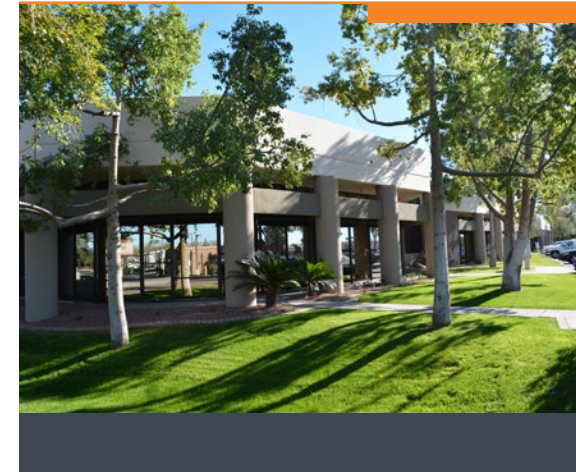
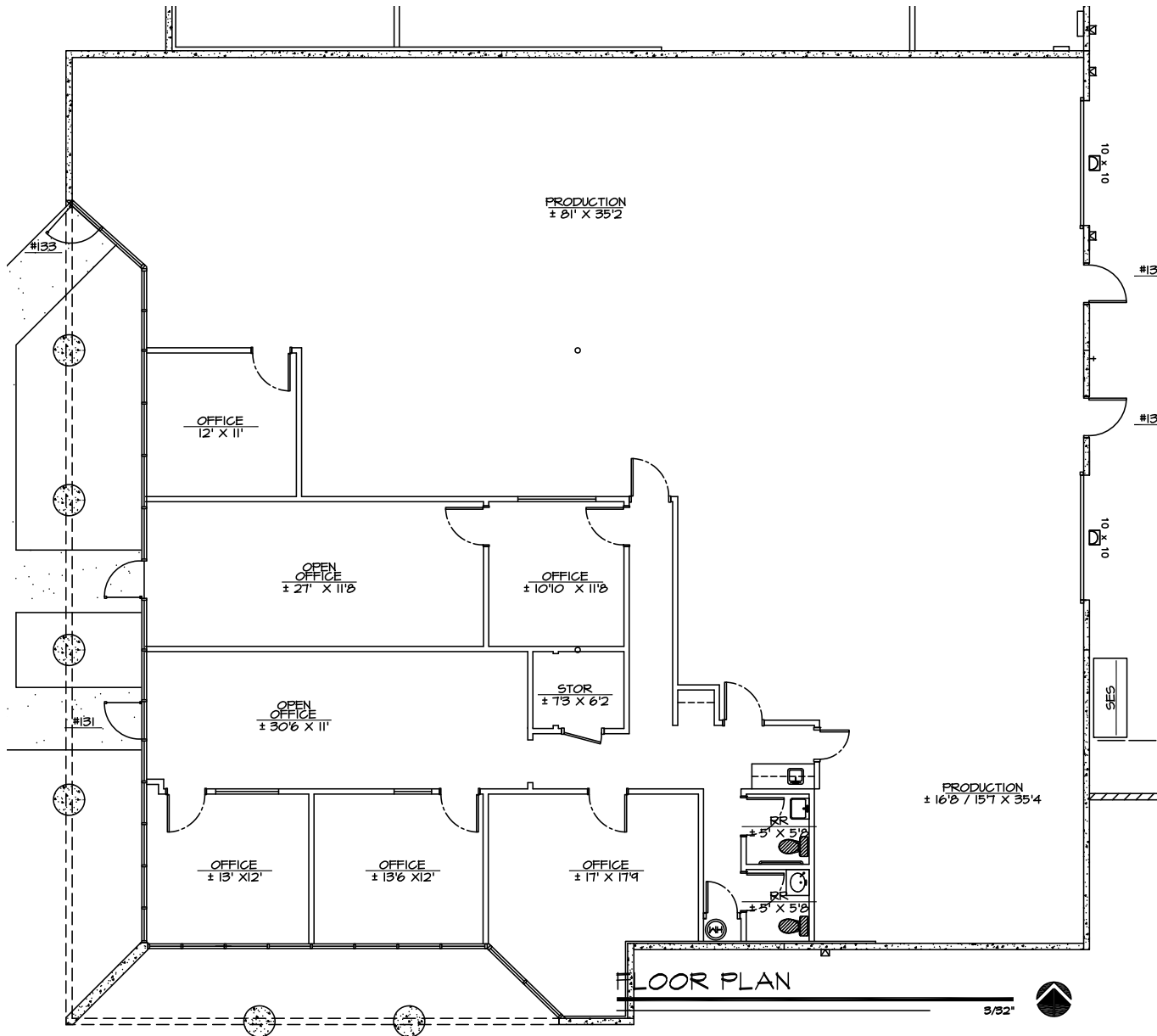
*The information contained herein has been obtained from various sources. We have no reason to doubt its accuracy; however, J & J Commercial Properties, Inc. has not verified such information and makes no guarantee, warranty or representation about such information. The prospective buyer or lessee should independently verify all dimensions, specifications, floor plans, and all information prior to the lease or purchase of the property. All offerings are subject to prior sale, lease, or withdrawal from the market without prior notice.*

05 22 26

# ORION COMMERCE PARK

110 W ORION ST, 133-135 (±6,177 SF)

UNDER NEW OWNERSHIP



## FOR MORE INFORMATION

DARIN EDWARDS

D 480.214.1117

M 480.628.8661

dedwards@cpiaz.com

CORY BREINHOLT

D 480.889.2569

M 480.220.9987

cbreinholt@cpiaz.com

## COMMERCIAL PROPERTIES INC.

2323 W University Dr

Tempe, AZ, 85281

www.cpiaz.com

## ORION COMMERCE PARK

110, 124, 136, 148 W ORION ST

6100 & 6202 S MAPLE AVE

125 W GEMINI AVE

6105 & 6125 S ASH AVE

PHOENIX, AZ 85040



The information contained herein has been obtained from various sources. We have no reason to doubt its accuracy; however, J & J Commercial Properties, Inc. has not verified such information and makes no guarantee, warranty or representation about such information. The prospective buyer or lessee should independently verify all dimensions, specifications, floor plans, and all information prior to the lease or purchase of the property. All offerings are subject to prior sale, lease, or withdrawal from the market without prior notice.

05 22 26

# ORION COMMERCE PARK

## AMENITIES & IMPROVEMENTS

UNDER NEW OWNERSHIP



### NEARBY AMENITIES

- Sky Harbor International Airport
- Arizona State University
- Easy Access to I-10 & US-60 Freeways

### FOR MORE INFORMATION

DARIN EDWARDS

D 480.214.1117

M 480.628.8661

dedwards@cpiaz.com

CORY BREINHOLT

D 480.889.2569

M 480.220.9987

cbreinholt@cpiaz.com

### COMMERCIAL PROPERTIES INC.

2323 W University Dr

Tempe, AZ, 85281

[www.cpiaz.com](http://www.cpiaz.com)

### ORION COMMERCE PARK

110, 124, 136, 148 W ORION ST

6100 & 6202 S MAPLE AVE

125 W GEMINI AVE

6105 & 6125 S ASH AVE

PHOENIX, AZ 85040



NEARBY AMENITIES