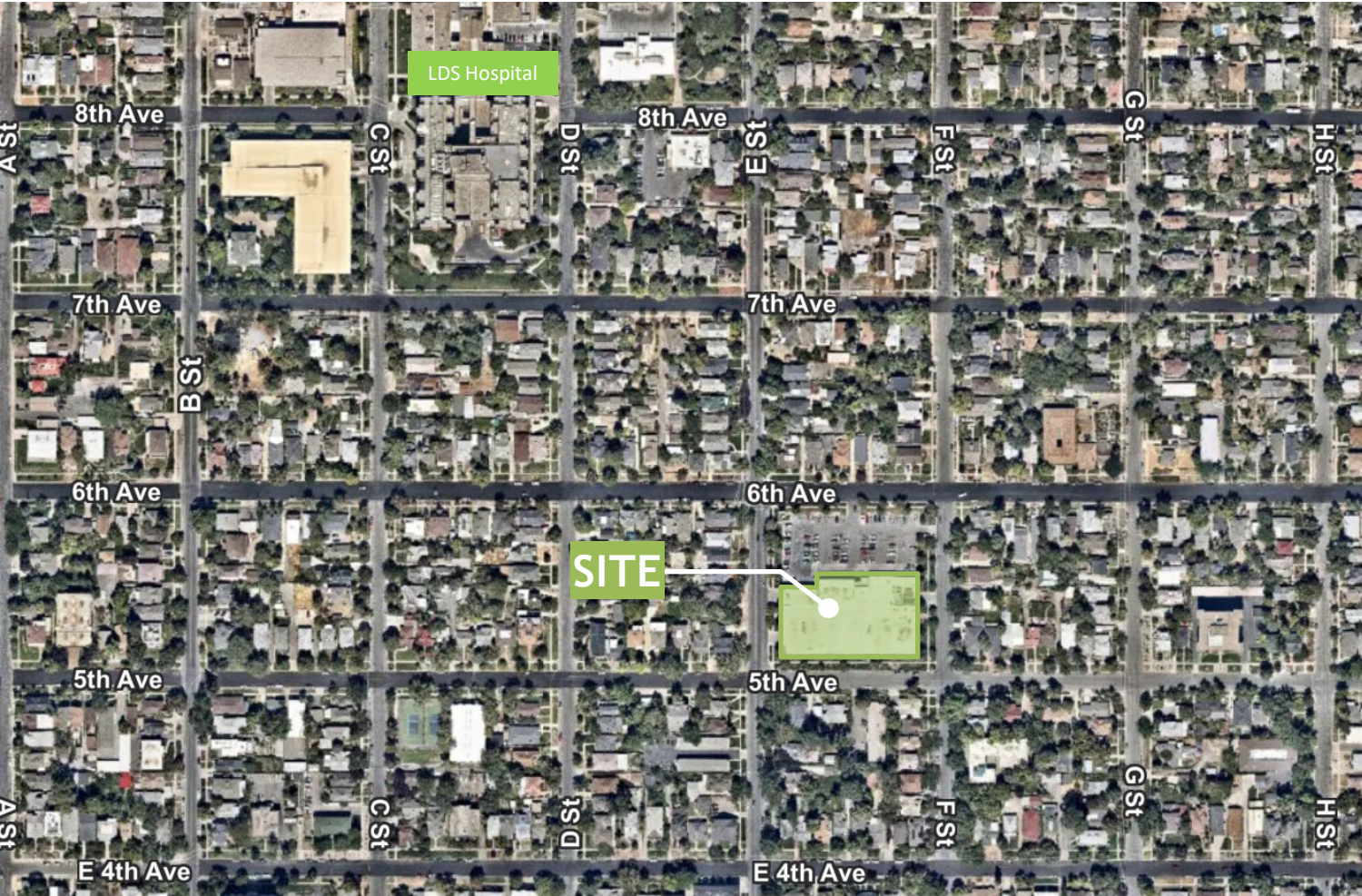


# SMITH'S ANCHORED RETAIL

402 6<sup>TH</sup> AVENUE

Salt Lake City, UT



## About The Property

- Two (2) spaces available
  - Suite 1 – 2,000 SF
  - Suite 2 – 2,170 SF
- Property is located in the NWQ of 5<sup>th</sup> Ave and E St in Salt Lake City, UT.
- Only grocery store in the Avenues area.
- The spaces are located directly underneath of the operating Smith's grocery store.
- The site offers excellent access to the Avenues area.
- Area retailers include State Liquor Store, Dollar Cuts, and Honey Nails.

RETAIL SPACE UNDER SMITH'S AVAILABLE FOR LEASE

### Brian Anderson

Vice President  
+1 801 869 8038  
[cbrian.anderson@cbre.com](mailto:cbrian.anderson@cbre.com)

### Sara Pickett

Client Services Professional  
+1 801 869 8047  
[sara.pickett@cbre.com](mailto:sara.pickett@cbre.com)

LISTED  
BY



PROPERTY MANAGED  
BY

# SMITH'S ANCHORED RETAIL

402 6<sup>TH</sup> AVENUE

Salt Lake City, UT



**Brian Anderson**

Vice President  
+1 801 869 8038  
[cbrian.anderson@cbre.com](mailto:cbrian.anderson@cbre.com)

**Sara Pickett**

Client Services Professional  
+1 801 869 8047  
[sara.pickett@cbre.com](mailto:sara.pickett@cbre.com)

LISTED  
BY

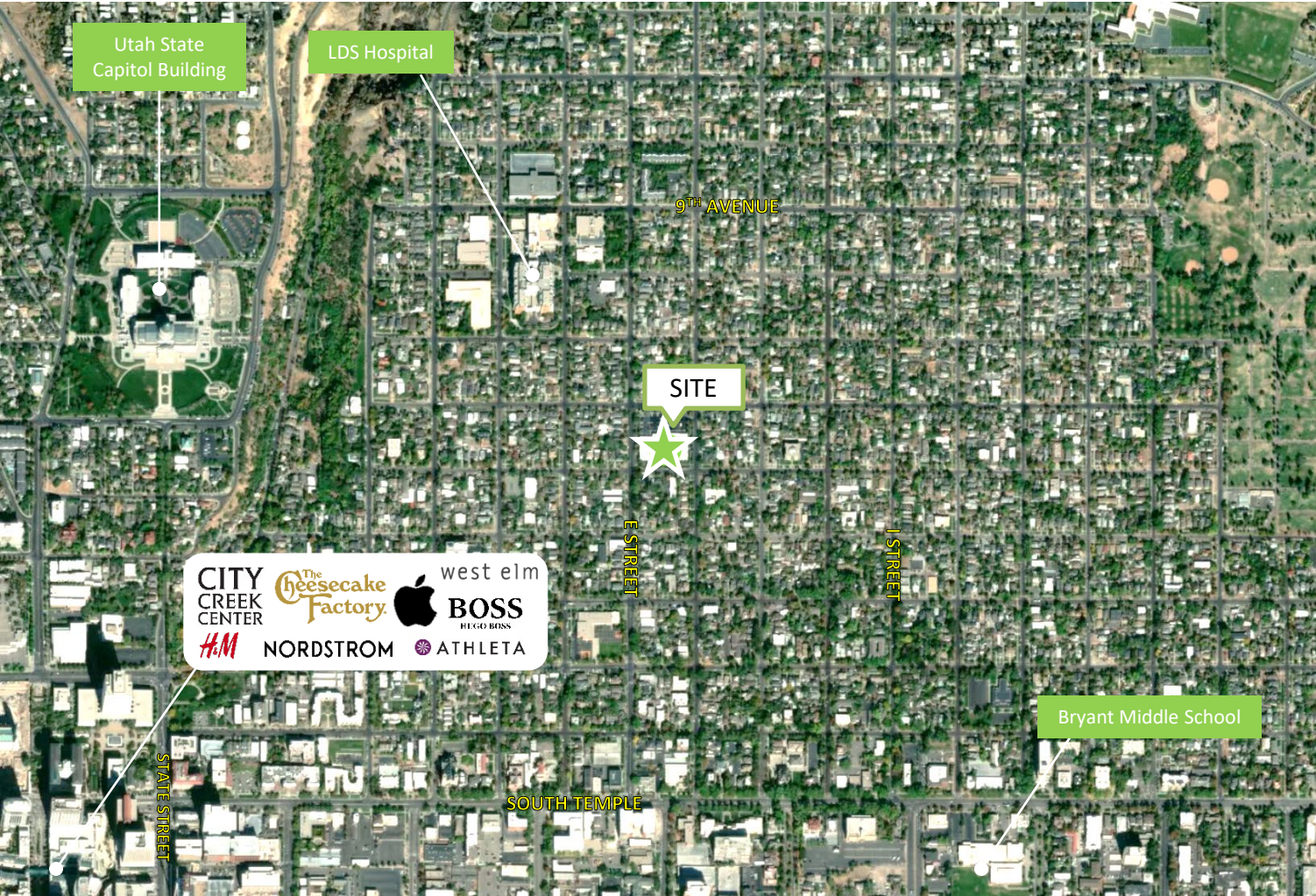


PROPERTY MANAGED  
BY

# SMITH'S ANCHORED RETAIL

402 6<sup>TH</sup> AVENUE

Salt Lake City, UT



## Demographics

### POPULATION

1 Mile	3 Miles	5 Miles
25,775	113,741	229,733

### MEDIAN AGE

1 Mile	3 Miles	5 Miles
34.4	32.9	32.9

### COLLEGE EDUCATION

1 Mile	3 Miles	5 Miles
40.8%	35.6%	33.6%

### MEDIAN HH INCOME

1 Mile	3 Miles	5 Miles
\$56,161	\$55,546	\$59,446

### DAYTIME POPULATION

1 Mile	3 Miles	5 Miles
45,338	197,105	347,887

### Brian Anderson

Vice President  
+1 801 869 8038  
[cbrian.anderson@cbre.com](mailto:cbrian.anderson@cbre.com)

### Sara Pickett

Client Services Professional  
+1 801 869 8047  
[sara.pickett@cbre.com](mailto:sara.pickett@cbre.com)

LISTED BY



PROPERTY MANAGED BY