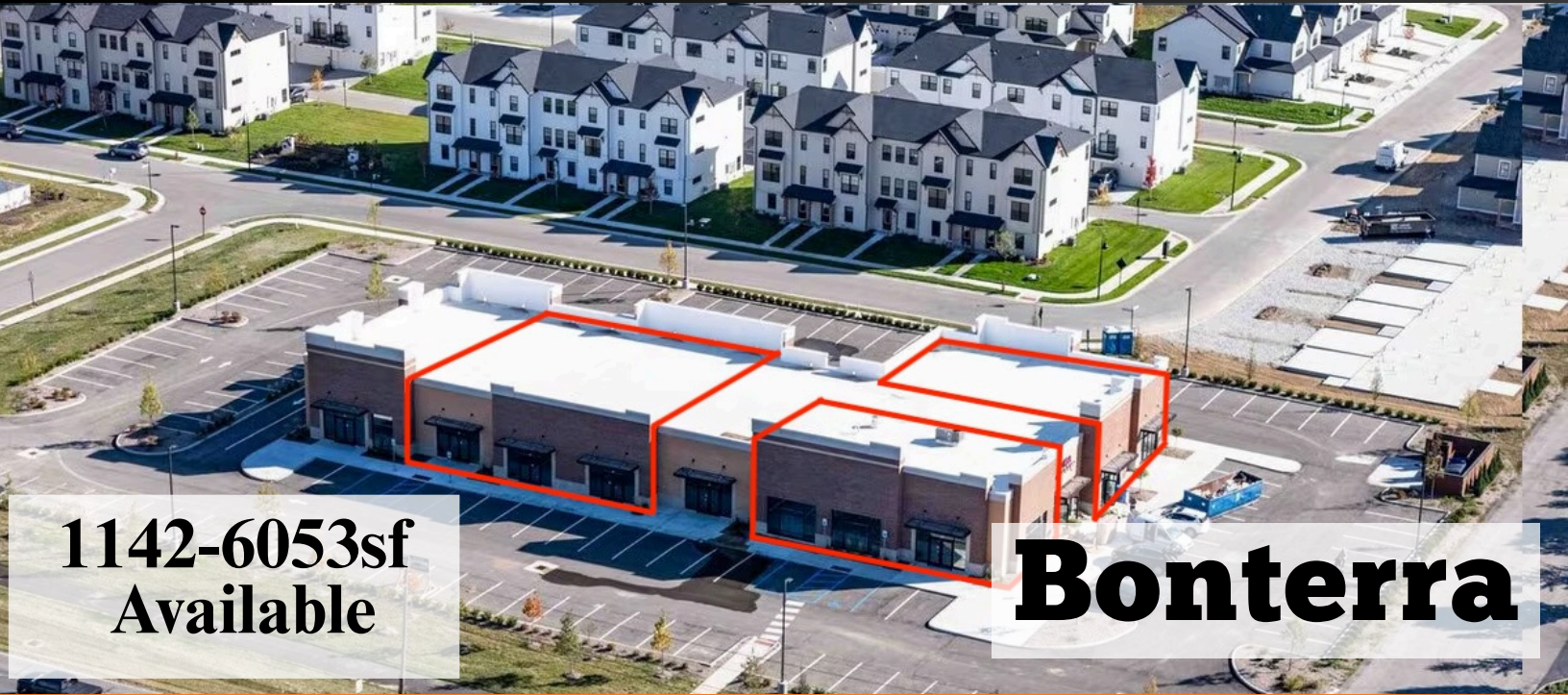


FOR LEASE

WESTFIELD | RETAIL FOR LEASE



1142-6053sf
Available

Bonterra

Premier Retail - 1142 - 6053 sf Available

Prime Retail Opportunity: New Development on SR 32 in Westfield, Indiana Discover your next thriving business location in the heart of Westfield's booming retail corridor! This brand-new, state-of-the-art retail development on SR 32 offers unparalleled visibility and accessibility, drawing high-traffic footfall from local commuters, shoppers, and the surrounding built-in neighborhoods including the new Bonterra townhomes—all accessible from the Midland Trace Trail. With easy highway access and proximity to upscale residential neighborhoods, this spot is primed for success in food, services, fitness, or specialty retail.

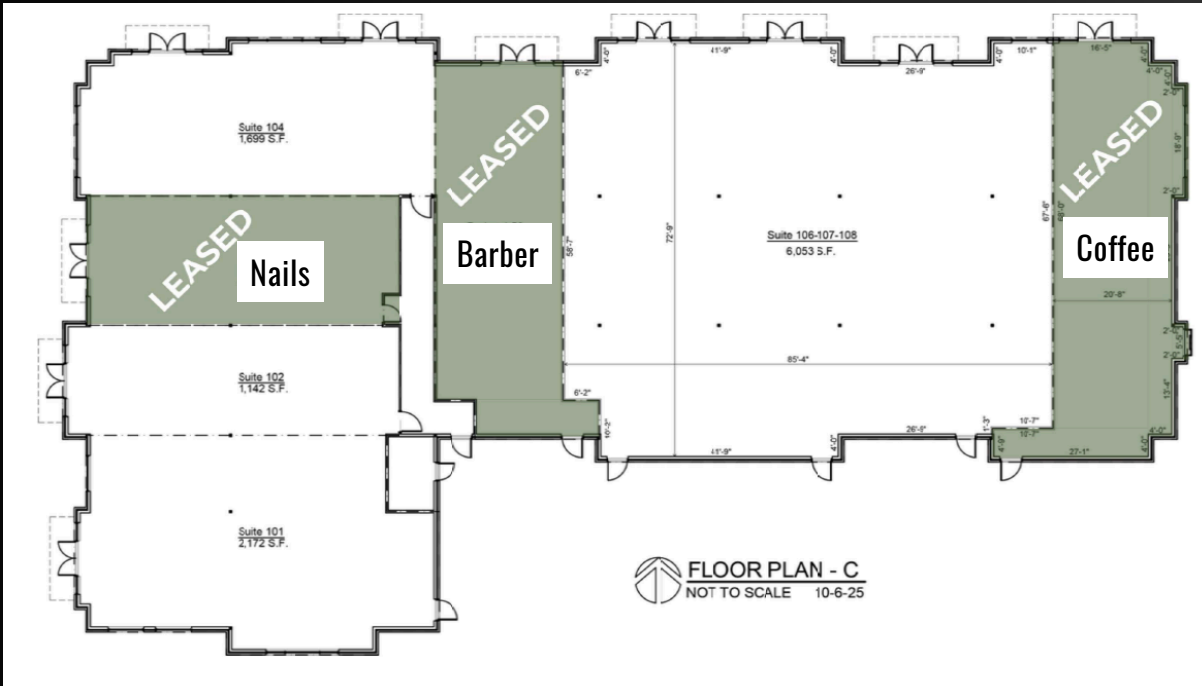
WKRP
INDY
REAL ESTATE

CONTACT
CURT WHITESELL

(317) 698-2700
WKRPINDY@GMAIL.COM
WKRPINDY.COM

FOR LEASE

WESTFIELD | RETAIL FOR LEASE



Established Anchors for Instant Synergy

Join a vibrant lineup of complementary tenants already generating buzz:

- A trendy nail salon catering to beauty enthusiasts.
- A cozy coffee shop perfect for morning rushes and casual meetups.
- A modern barber shop serving the grooming needs of the neighborhood.

These anchors create a built-in customer base, ensuring steady cross-traffic and a lively, destination-worthy atmosphere from day one. Flexible Spaces Tailored to Your Vision

Available suites range from 1,142 SF (ideal for boutique shops, quick-service concepts, or professional offices) to expansive 6,053 SF endcaps (perfect for larger formats like gyms, eateries, or experiential retail). Customizable build-outs are available to suit your brand, with high ceilings, ample natural light, and modern infrastructure ready for immediate occupancy. Unmatched Convenience for Tenants and Customers

Every space comes with abundant, dedicated parking—over 4 spaces per 1,000 SF—eliminating hassle and maximizing accessibility. Plus, enjoy energy-efficient designs, fiber-ready connectivity, and signage opportunities on a high-exposure facade. Westfield is on the rise, with population growth exceeding 5% annually and median household incomes topping \$120K. Secure your spot in this high-demand development before it's gone—spaces are leasing fast!