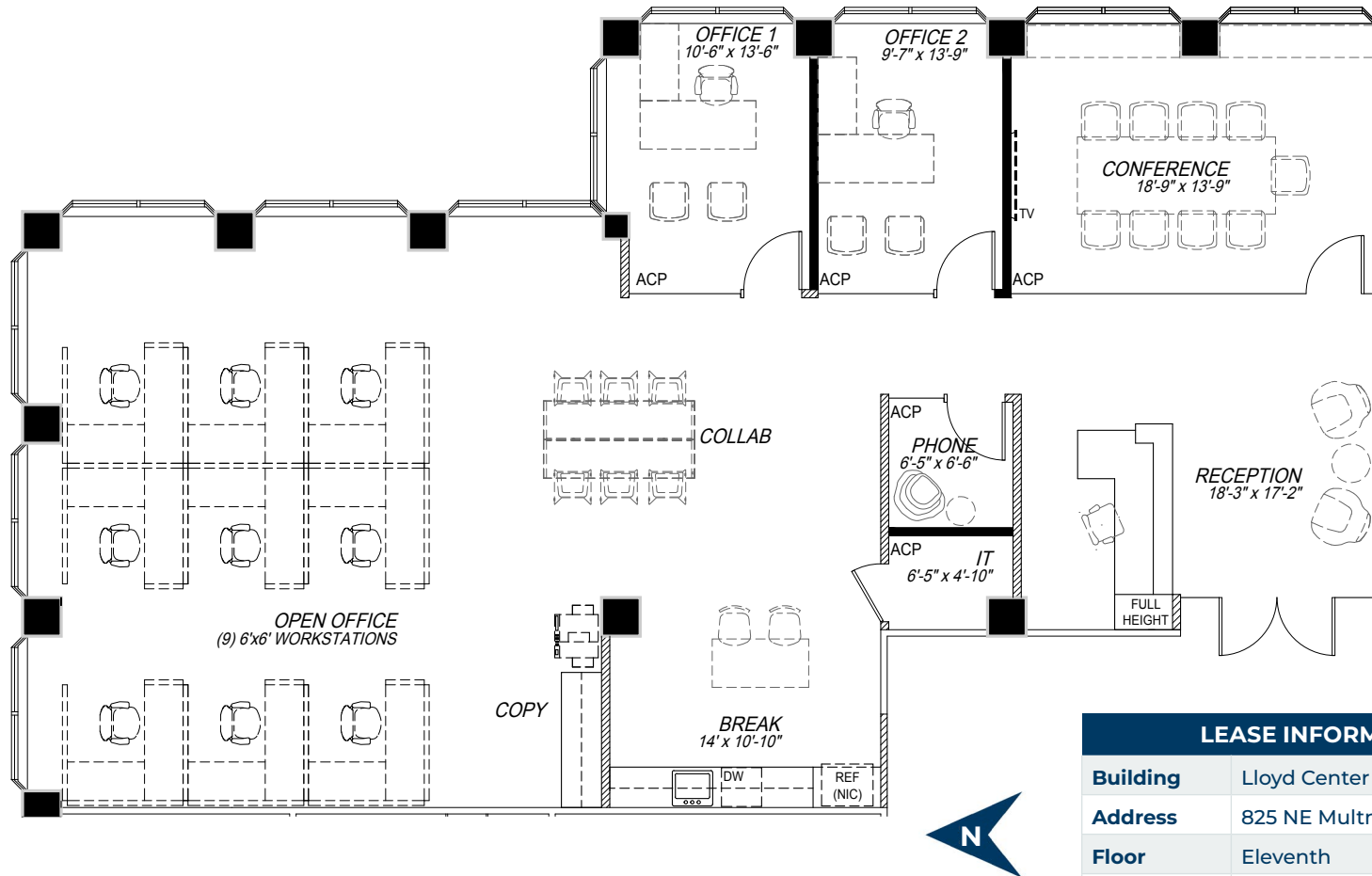




# FLOOR PLAN

FULLY BUILT-OUT MODERN SPEC SPACE  
**DELIVERING Q1 2026**



## LEASE INFORMATION

|                 |                     |
|-----------------|---------------------|
| <b>Building</b> | Lloyd Center Tower  |
| <b>Address</b>  | 825 NE Multnomah St |
| <b>Floor</b>    | Eleventh            |
| <b>Suite</b>    | 1180                |
| <b>Total SF</b> | 3,018 RSF           |



**JEFF FALCONER, SIOR**  
Principal | Licensed in OR  
503-542-4346  
jeff@capacitycommercial.com

**MCCOY DOERRIE, SIOR**  
Senior Vice President | Licensed in OR & WA  
503-523-7751  
mccoy@capacitycommercial.com